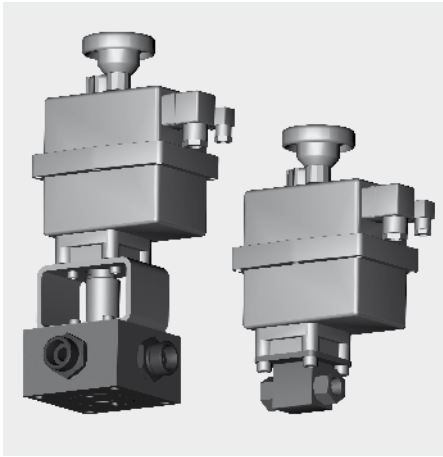


Electrically Actuated Ball Valves

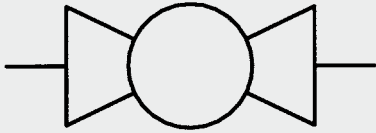


Model code
(also order example)

KHB-G1/4-1114 AE.24V

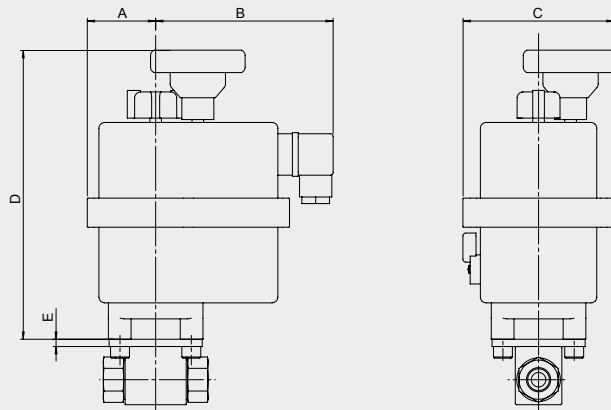
Designation
Type of ball valve

Actuator code
 AE = electric actuation
 .24V = 12-24V AC/DC
 .240V = 85 - 240V AC/DC

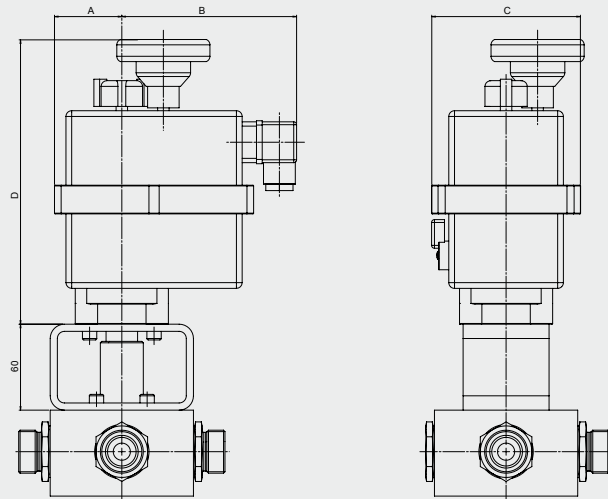


PN up to 500 bar
DN up to 04 - 50

Assembly using adapter plate



Assembly using separate coupling



Dimensions

DN	A	B	C	D	E
04/06-SW09	51	126	110	196	5
08/10/13	51	126	110	196	5
16	51	126	110	196	10
20	107	128	214	254	5
25	107	128	214	254	5
32	107	128	214	254	5
40	107	128	214	254	5
50	107	128	214	254	5

Note

We recommend using an adapter plate when fitting an electric actuator to block-type, sleeve-type and 3-way change-over ball valves.

For flanged, manifold and 3-way and 4-way ball valves, a separate coupling is required for assembly.

On request other versions are available to suit almost all applications.

Equipment

Electrical actuator

- ETL (electronic torque limiter)
- AVS (automatic voltage sensor)
- ATC (automatic temperature control) to prevent condensation
- Mechanical release in event of jam
- Manual override
- Two integrated, volt-free micro switches for position confirmation
- Protection class IP 65

Technical specifications

Mounting position	Optional
Ambient temperature	-10°C to +80°C
Nominal pressure	Up to PN 500 bar (see pressure range)
Operating fluids	Mineral oil to DIN 51524 Part 1 and Part 2 (other fluids on request)
Temperature of operating fluid	-10°C to +80°C
Spare parts	Seal kits available on request

NOTE

The information in this brochure relates to the operating conditions and applications described.

For applications or operating conditions not described, please contact the relevant technical department.

Subject to technical modifications.