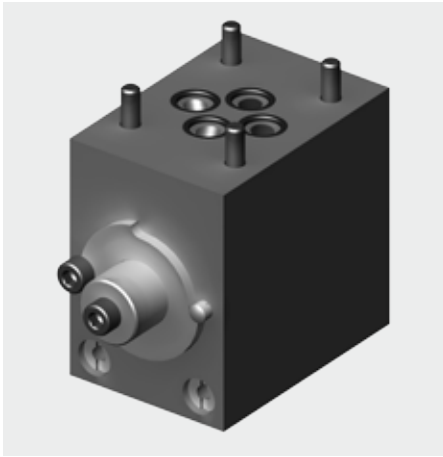
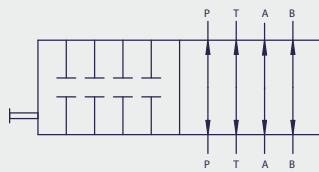


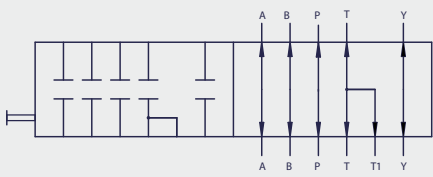
Isolator Sandwich Plate CETOP



Symbol DN 06



Symbol DN 10



Model code
(also order example)

KHB4K **DN10** **CETOP** **5302** **09** **X**

Designation

KHB4K = 4-galley isolator ball valve
KHB6K = 6-galley isolator ball valve

Nominal bore

DN06
DN10

Connection type

CETOP

Materials

Housing

1 = steel 1.0718 (DN06)
5 = steel 1.0570 (DN10)

Spindle

3 = stainless steel 1.4462

Gasket

0 = metal

O-ring

2 = NBR

Handle

09 = without handle

Series

(determined by manufacturer)

Function

The sandwich plate is mounted before DN06/DN10 directional valves and is used to isolate all channels at the same time via a common spindle. This is operated manually using an open-ended spanner SW9. This means that the directional valve mounted on the sandwich plate can be changed quickly without having to relieve the pressure or drain the system, and with a minimum of leakage.

In normal operation, all channels are open. The spindle is secured and locked with two screws to prevent unauthorized operation.

Advantages

- Reduction in downtimes for hydraulic systems
- Minimum of internal leakage during normal operation
- Minimum of leakage during the short time when the valve is being replaced
- Not necessary to vent the line after changing the components
- Components can be changed without risk of accidents because all the channels are isolated

Technical specifications

Design	Sandwich plate
Mounting position	Optional
Medium	Mineral oil
Viscosity range	10 to 380 mm ² /s
Leakage rate	1 ml / min at 160 bar / 35°C
Surface protection	Phosphated
Applied standards	PED 97/93/EC; DIN EN 19; ISO 4401, DIN 24340-T2

KHB4K-DN06-1302-09X

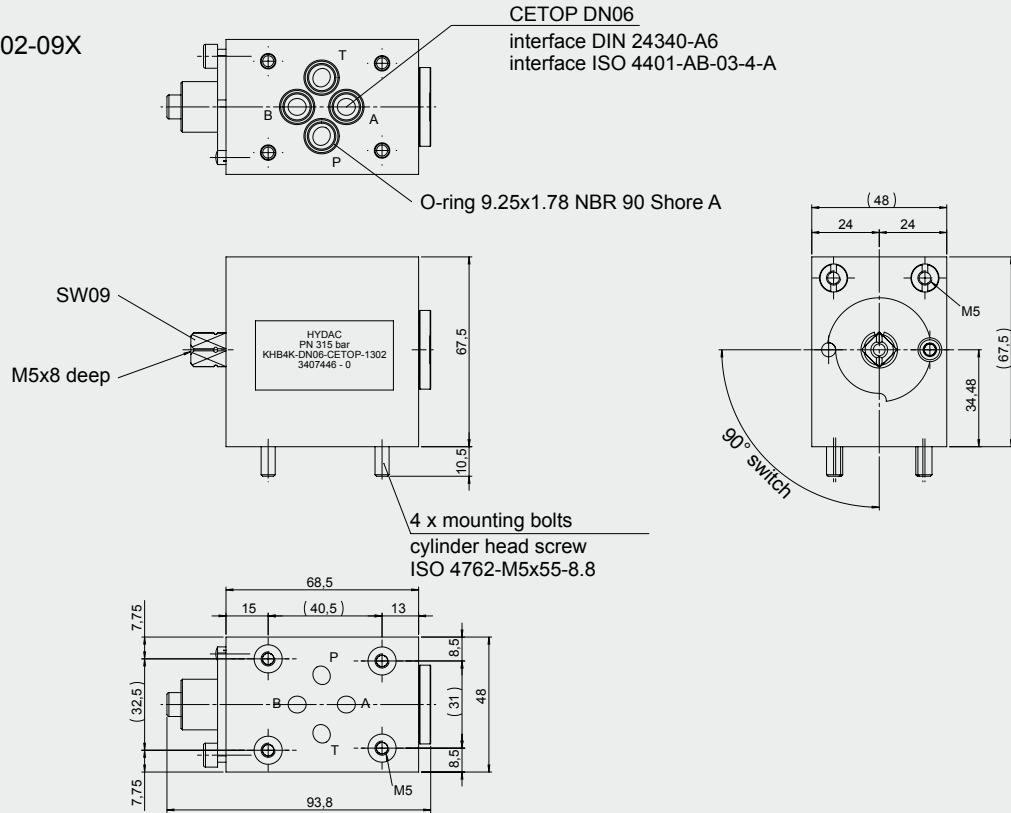
Connection type	CETOP DN06
Interface	DIN 24340-A6 ISO 4401
Temperature of the medium	-10°C to + 70°C
Ambient temperature	-10°C to + 70°C
Nominal pressure	PN 315 bar
Max. operating pressure	PB 315 bar

KHB6K-DN10-5302-09X

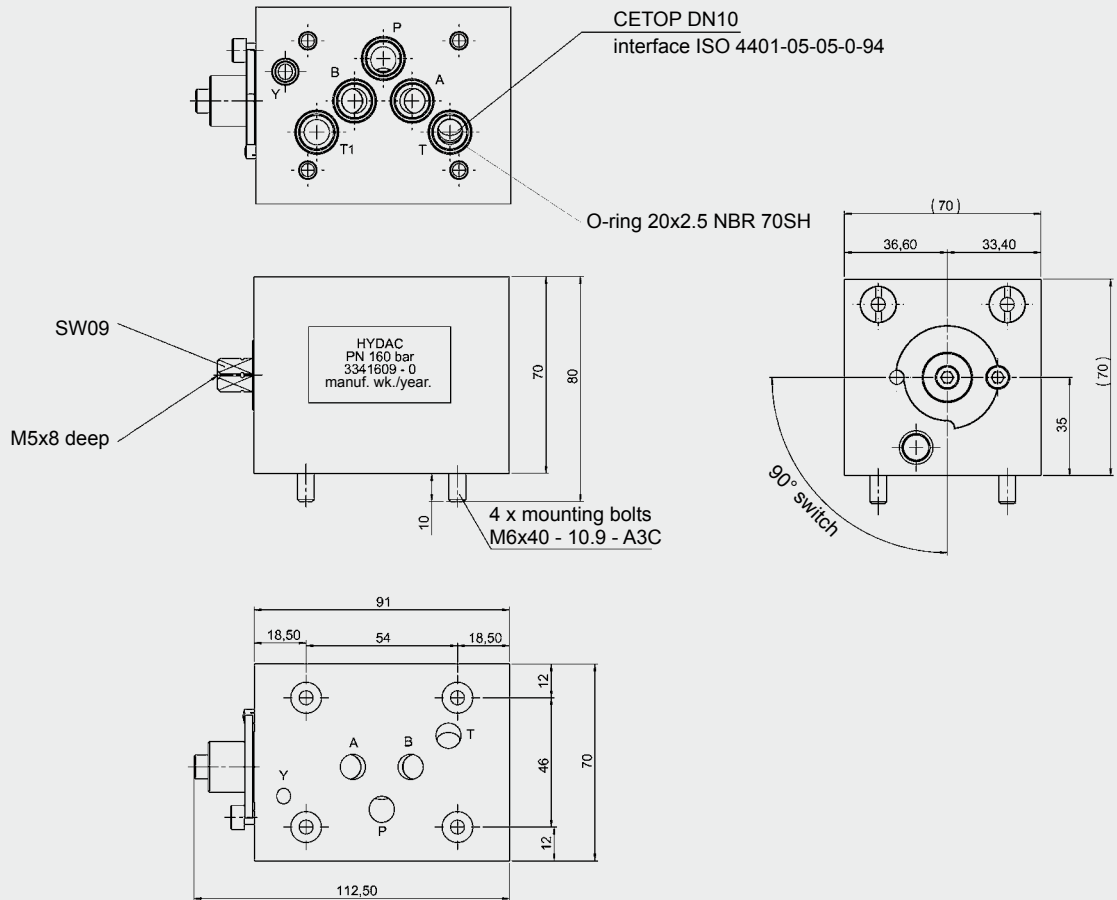
Connection type	CETOP DN10
Interface	DIN 24340-A10 ISO 4401
Temperature of the medium	+30°C to + 60°C
Ambient temperature	-20°C to + 70°C
Nominal pressure	PN 160 bar
Max. operating pressure	PB 160 bar

Dimensions

KHB4K-DN06-CETOP-1302-09X



KHB4K-DN10-CETOP-5302-09X



NOTE

The information in this brochure relates to the operating conditions and applications described.

For applications or operating conditions not described, please contact the relevant technical department.

Subject to technical modifications.

HYDAC Accessories GmbH
 Hirschbachstr. 2
66280 Sulzbach/Saar
 Tel.: +49 (0)6897 - 509-1001
 Fax: +49 (0)6897 - 509-1009
 Internet: www.hydac.com
 E-Mail: info@hydac.com

