



Contamination Test Module – Extraction Flushing CTM-EF-1x3x

Description

The Contamination Test Module CTM is a modular system for inspecting components with reference to their technical cleanliness. The solid particle contamination is thereby dedusted from the component surface through wet sampling and conveyed per diaphragm to a later evaluation.

The CTM-EF extraction module is used for flushing in conjunction with a suitable module.

Fields of application

- Automotive and supplier industry
- Gearbox and engine builders
- Mobile hydraulics
- Manufacture of hydraulic and lubrication system components
- Aircraft industry

Advantages

- Cost reductions through lower production waste
- Detection and elimination of weak points
- Reduction of failures before delivery
- Internal and external process optimisation
- Customised documentation of the technical cleanliness of components

Technical specifications

General data	
Ambient temperature	15 ... 28°C
Filter membrane holder	for Ø 47 mm filter membranes
Weight	≈ 75 kg (empty)
Dimensions (height x width x depth)	1.45 x 0.50 x 0.50 m
Self-cleaning	with an integrated orifice
Fill level monitoring	Ultrasonic sensor
Reservoir filling volume	≈ 5 litres/8 litres
Reservoir material	Polished stainless steel 1.4301
Housing material	S235JR powder-coated
Hydraulic connection	Quick release coupling
Built-in collecting pan	23 litres with drain
Electrical data	
Protection class to DIN 40050	IP 54
Supply voltage, module	24 V DC of CTM-SC 10 W maximum

Blank values

All data is dependent on the ambient conditions

Environment	CTM-EF 1230	CTM-EF 1430
Clean room	0.1 mg	0.1 mg
Laboratory	0.1 mg	0.1 mg
Separate sampling room	0.1 mg	0.1 mg
Factory building	0.1 mg	0.1 mg

CTM-EF 1230 / CTM-EF 1430

Max. particle size (metallic) [µm]	Time required	Cleaning time [h] after brief shutdown (≤ 24 h)	Cleaning time [h] after extended shutdown (> 24 h)
70	high	1 ... 4	1 ... 4
100	Medium	1 ... 2	1 ... 2
150	Low	0.5	0.5

Model code

CTM EF 12 0 0 - Z - Z - Z / -

Type

CTM = Contamination Test Module

Module

EF = Extraction Flushing

Volume, reservoir

12 = nominal, volume: 5 litres

14 = nominal, volume: 8 litres

Filtration

3 = Version 2018

Analysis fluid

0 = Solvent cleaner (G60 Spezial, flash point > 60°C, lower explosion limit > 0.6 Vol.%)

1 = water with surfactants, permitted pH values 6 - 10, no deionised water and G60 Spezial

Supply voltage of option

K = 120 V AC / 60 Hz / 1 phase USA/Canada

M = 230 V AC / 50 Hz / 1 phase Europe

N = 240 V AC / 50 Hz / 1 phase UK

O = 240 V AC / 50 Hz / 1 phase Australia

P = 100 V AC / 50 Hz / 1 phase Japan

Z = without

Extraction method

Z = spray, medium pressure

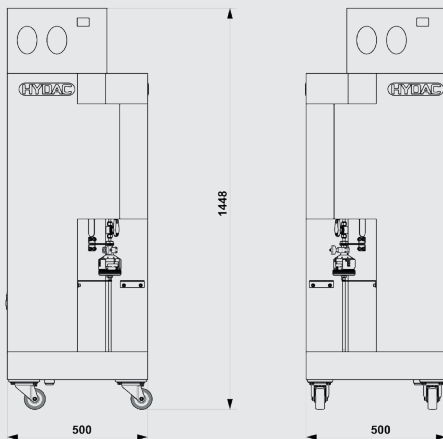
Supplementary details

Z = standard

Modifications

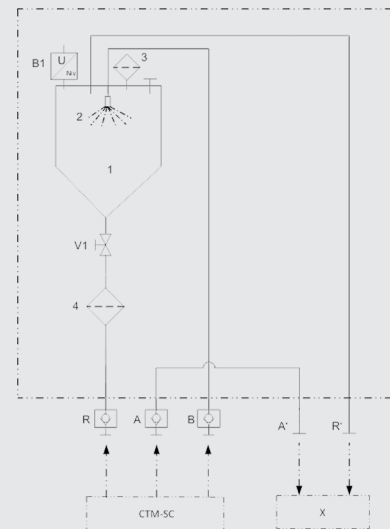
- = without modifications

Dimensions (all dimensions in mm)



Item	Designation
a	Quick release coupling "A"
W	Quick release coupling "B"
R	Quick release coupling "R"
A'	Male thread G 1/4"
R'	Male thread G 1/4"
B1	Fluid level sensor
1	Reservoir
2	Flushing of inner chamber
3	Breather filter
4	Filter membrane holder
x	Test item
V1	Ball valve

Hydraulic circuit diagram



Scope of delivery

- CTM-EF
- Technical documentation

Note

The information in this brochure relates to the operating conditions and applications described.

For applications and operating conditions not described, please contact the relevant technical department.

Subject to technical modifications.

HYDAC FILTER SYSTEMS GMBH
Industriegebiet
D-66280 Sulzbach / Saar
Tel.: +49 (0) 6897/509-01
Fax: +49 (0) 6897/509-9046
Internet: www.hydac.com
E-mail: filtersystems@hydac.com

