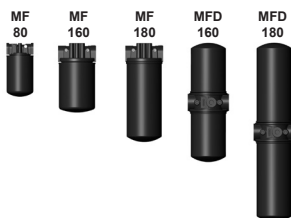




Spare Parts List Spin-On Filter MF/MFD up to 300 l/min, up to 8 bar



1. MAINTENANCE

1.1 GENERAL

**PLEASE FOLLOW THE
MAINTENANCE INSTRUCTIONS!**

1.2 INSTALLATION

Before fitting the filter into the system, check that the operating pressure of the system does not exceed the permitted operating pressure of the filter.

Refer to the name plate on the filter!

1.3 COMMISSIONING

Check that the correct filter cartridge(s) is/are firmly screwed in place.

1.4 TOOLS REQUIRED FOR MAINTENANCE

Strap wrench

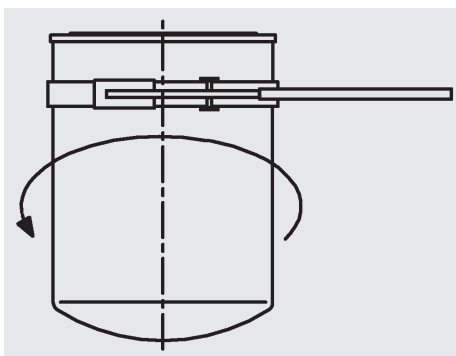
1.5 TORQUE VALUES FOR CLOGGING INDICATORS

| Type | Max. torque |
|------|------------------------------|
| VMF | The indicators are glued in! |

2. CHANGING THE CARTRIDGE

2.1 REMOVING THE ELEMENT

1. Unscrew filter cartridge anticlockwise using a strap wrench.



Seal for version MA

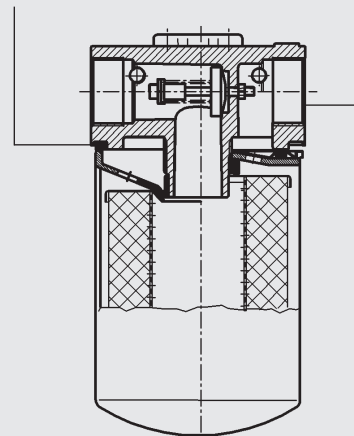
Notice:

In this case, the seal must be inserted in the filter head.

Seal for version MG

Notice:

In this case, the seal is inserted in the filter cartridge.



FILTER CARTRIDGE TYPE MA:

2. Lubricate seal and insert into filter head

3. Unscrew cartridge until contact is made with the sealing surface – then tighten fast by an additional half to complete turn.

4. Do not tighten excessively!

FILTER CARTRIDGE TYPE MG:

2. Lubricate seal and fit into filter cartridge

3. Unscrew cartridge until contact is made with the sealing surface – then tighten fast by an additional half to complete turn.

4. Do not tighten excessively!

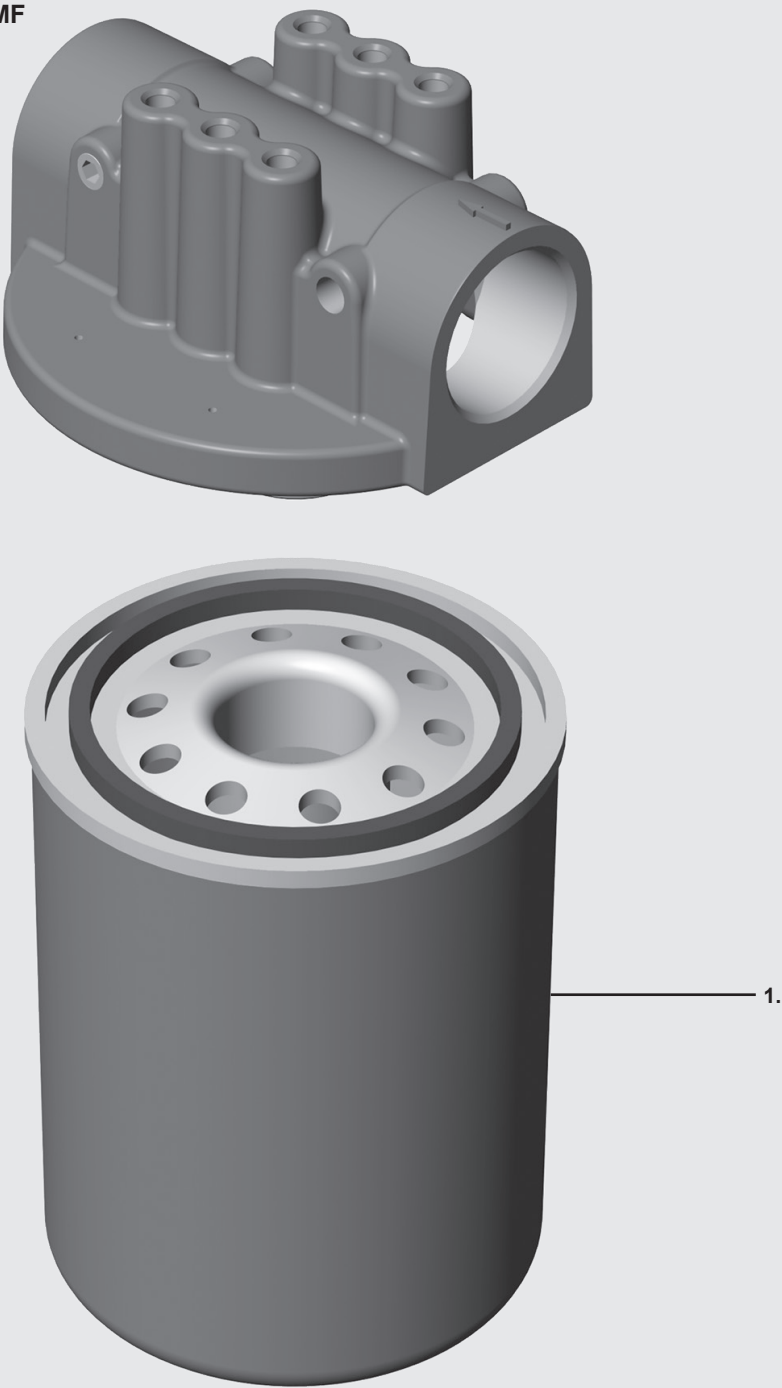
NOTICE:

Contamination or incomplete pressure release on disassembly can lead to seizing of the bowl thread.

Filter elements which cannot be cleaned must be disposed of in accordance with environmental protection regulations.

3. SPARE PARTS

3.1 SPARE PARTS DRAWING MF

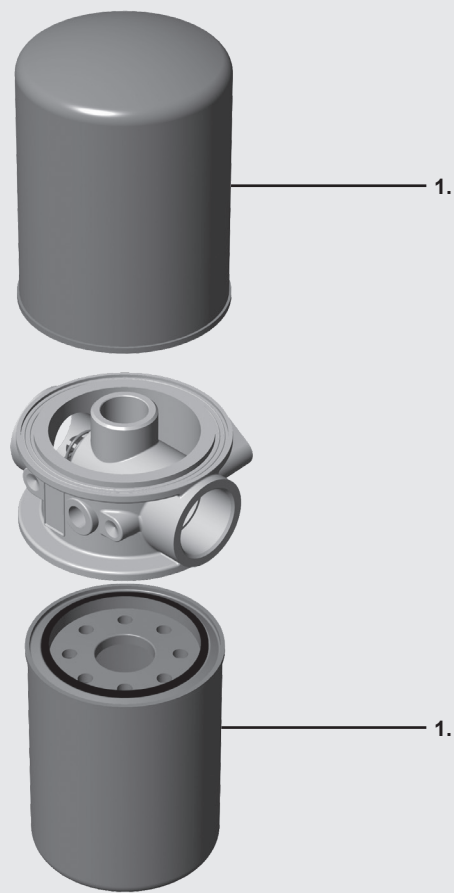


3.2 SPARE PARTS LIST MF

| Item | Description | 80 | 160 | 180 |
|------|------------------|----------|----------|----------|
| 1. | Filter cartridge | | | |
| | 0080 MG 010 P | 00315738 | – | – |
| | 0080 MA 010 BN | 01277457 | – | – |
| | 0080 MG 020 BN | 00300873 | – | – |
| | 0160 MG 010 P | – | 00249005 | – |
| | 0160 MA 003 BN | – | 00314609 | – |
| | 0160 MA 005 BN | – | 00315621 | – |
| | 0160 MA 010 BN | – | 00314022 | – |
| | 0160 MA 020 BN | – | 00315485 | – |
| | 0180 MA 003 BN | – | – | 00310475 |
| | 0180 MA 005 BN | – | – | 00315622 |
| | 0180 MA 010 BN | – | – | 00315726 |
| | 0180 MA 020 BN | – | – | 00315623 |
| | 0180 MA 010 P | – | – | 00303122 |

Other spare parts on request

3.3 SPARE PARTS DRAWING MFD



3.4 SPARE PARTS DRAWING MFD

| Item | Description | 160 | 180 |
|------|------------------|----------|----------|
| 1. | Filter cartridge | | |
| | 0160 MG 010 P | 00249005 | – |
| | 0160 MA 003 BN | 00314609 | – |
| | 0160 MA 005 BN | 00315621 | – |
| | 0160 MA 010 BN | 00314022 | – |
| | 0160 MA 020 BN | 00315485 | – |
| | 0180 MA 003 BN | – | 00310475 |
| | 0180 MA 005 BN | – | 00315622 |
| | 0180 MA 010 BN | – | 00315726 |
| | 0180 MA 020 BN | – | 00315623 |
| | 0180 MA 010 P | – | 00303122 |

Other spare parts on request

4. REPLACEMENT CARTRIDGE

0160 MA 010 BN

Size
0080, 0160, 0180

Type
MG for filters with cartridge connection G
(= thread to ISO 228);
paper filter material only
(exception: MF 80: 20 BN)

MA for filters with cartridge connection U
(= UN thread)

Filtration rating
BN: 003, 005, 010, 020
(for MF 80: MA = only 10 µm; MG = 20 µm)
P: 010

Filter material
BN, P

5. REPLACEMENT CLOGGING INDICATOR

VMF 2 E . X

Type of indicator
VMF return line pressure indicator

Response pressure
2 2 bar standard for MF 160/180
1.5 1.5 bar standard for MF 80
1.7 1.7 bar standard for MFD 160/180

Type of clogging indicator
A screw plug in indicator port
E pressure gauge
F pressure switch
UE vacuum gauge
UF vacuum switch

Modification number
X the latest version is always supplied

6. MAINTENANCE INSTRUCTIONS

6.1 USER INSTRUCTIONS FOR FILTERS



Notice

This pressure equipment must only be put into operation in conjunction with a machine or system.



Notice

The pressure equipment must only be used as stipulated in the operating instructions of the machine or system.



Notice

This pressure equipment must only be operated using hydraulic or lubricating fluid.



Caution

The user must take appropriate action (e.g. venting) to prevent the formation of air pockets.



Caution

Repair, maintenance work and commissioning must be carried out by specialist personnel only.

Allow the pressure equipment to cool before handling.

The stipulations of the operating instructions of the machine or system must be followed.



Danger

Caution: pressure equipment! Before any work is carried out on the pressure equipment, ensure the pressure chamber concerned (filter housing) is depressurised.



Danger

On no account must any modifications (welding, drilling, opening by force etc.) be carried out on the pressure equipment.



Notice

It is the responsibility of the owner to comply with the water regulations of the country concerned.



Caution

Statutory accident prevention regulations, safety regulations and safety data sheets for fluids must be observed.



Caution

Filter housing must be earthed.



Caution

When working on, or in the vicinity of, hydraulic systems, naked flames, spark generation and smoking are forbidden.



Caution

Hydraulic oils and water-polluting fluids must not be allowed to enter the soil or watercourses or sewer systems. Please ensure safe and environmentally friendly disposal of hydraulic oils. The relevant regulations in the country concerned with regard to ground water pollution, used oil and waste must be complied with.



Caution

Whenever work is carried out on the filter, be prepared for hot oil to escape which can cause injury or scalding as a result of its high pressure or temperature.



Danger

When using electrical clogging indicators, the electrical power supply to the system must be switched off before removing the clogging indicator connector.

Customer Information in respect of Machinery Directive 2006/42/EC

Hydraulic filters are fluid power parts/ components and are therefore excluded from the scope of the Machinery Directive. They do not bear the CE mark. Before using these components, ensure compliance with the specifications provided by HYDAC Filbertechnik GmbH in this documentation.

The specifications also contain information on the relevant essential health and safety requirements (based on Machinery Directive 2006/42/EC) that are to be applied by the user.

We hereby declare that the filters are intended to be incorporated into machinery within the terms of the Machinery Directive 2006/42/EC. It is prohibited to put the filters into service until the machinery as a whole is in conformity with the provisions of the Machinery Directive. Furthermore, our Terms of Sale and Delivery are available on our website (www.hydac.com).

SERVICE ADDRESSES

HYDAC Service GmbH
Postfach 1251
66273 Sulzbach / Saar, Germany

Factory address:

Werk 13
Friedrichsthaler Str. 15
66540 Neunkirchen / Heinitz
Germany

ServiCenter:

Tel.: +49 (0) 6897 / 509-9083
Fax: +49 (0) 6897 / 509-9881

Customer service:

Tel.: +49 (0) 6897 / 509-412
Fax: +49 (0) 6897 / 509-828

6.2 MAINTENANCE, GENERAL

This section describes maintenance work which must be carried out periodically. The operational safety and life expectancy of the filter, and whether it is ready for use, depend to a large extent on regular and careful maintenance.

6.3 MAINTENANCE MEASURES

- Spare parts must fulfil the technical requirements specified by the manufacturer. This is always ensured when using original HYDAC spare parts.
- Keep tools, working area and equipment clean.
- After disassembling the filter, clean all parts, check for damage or wear and replace parts if necessary.
- When changing a filter element, a high level of cleanliness must be observed!

6.4 Cartridge change interval

We recommend installing the filter with a clogging indicator (pressure gauge or pressure switch/vacuum gauge or vacuum switch) to monitor the filter element.

When the clogging indicator is triggered this shows that the filter cartridge has to be replaced.

If the pressure gauge displays 1.5 bar (or the vacuum switch displays 0.2 bar), it is also necessary to replace the filter cartridge.

NOTE

The information in this brochure relates to the operating conditions and applications described. For applications and operating conditions not described, please contact the relevant technical department. Subject to technical modifications.

This image shows a full page of blank graph paper. The grid consists of small, uniform squares formed by thin, light gray lines. There are no margins, text, or other markings on the page.