

## Fixed Displacement Vane Pumps

for Open Loop Hydraulic Systems

### 4. VANE PUMPS

#### 4.1 FIXED DISPLACEMENT

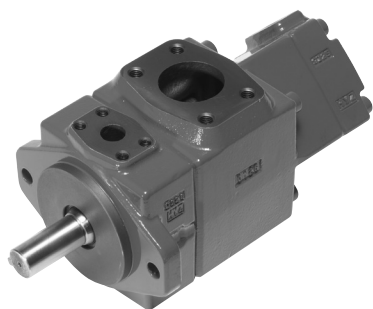
PVF100



Series	Geometric displacement [cm <sup>3</sup> /rev]	Operating pressure Rated [bar]	Maximum drive speed [rpm]
PVF100-1-6	5.8	210	1800
PVF100-1-8	8.0		1800
PVF100-1-10	9.4		1800
PVF100-1-12	12.2		1800
PVF100-1-14	13.7		1800
PVF100-1-17	16.6		1800
PVF100-1-19	18.6		1800
PVF100-1-23	22.7		1800
PVF100-1-25	25.3		1800
PVF100-1-31	31.0	160	1800
PVF100-2-41	41.3	210	1800
PVF100-2-47	47.2		1800
PVF100-2-53	52.5		1800
PVF100-2-59	58.2		1800
PVF100-2-65	64.7		1800
PVF100-3-76	76.4		1800
PVF100-3-94	93.6	1800	
PVF100-3-116	115.6	160	1800
PVF100-4-136	136.0	175	1800
PVF100-4-153	153.0		1800
PVF100-4-184	184.0		1800
PVF100-4-200	201.0		1800
PVF100-4-237	237.0		1800

## 4.2 FIXED DISPLACEMENT- DOUBLE PUMP

PVF101



Series	Geometric displacement		Operating pressure Rated [bar]	Maximum drive speed [rpm]
	Stage 2 [cm <sup>3</sup> /rev]	Stage 1 [cm <sup>3</sup> /rev]		
PVF101-12-	6 8 10 12 14 17 19 23 25 31	26 33 41 47 53 59 65	210 (160)	1800
PVF101-13-	6 8 10 12 14 17 19 23 25 31	76 94 116	210 (160)	1800
PVF101-23-	41 47 53 59 65	52 60 66 76 94 116	210 (160)	1800
PVF101-33-	76 94 116	76 94 116	210 (160)	1800
PVF101-14-	6 8 10 12 14 17 19 23	136 153 184 200 237	175	1800
PVF101-24-	26 33 41 47			
PVF101-34-	52 60 66 76 94 116			