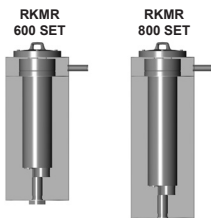




Return Line Suction Filter RKMR

Element flow direction from in to out
In-tank versions:
up to 800 l/min, up to 10 bar



1. TECHNICAL SPECIFICATIONS

1.1 FILTER HOUSING

Construction

The filter housings are designed in accordance with international regulations. They consist of a filter cover plate and an element location spigot. The element is top-removable.

Standard equipment:

- bypass valve
- magnetic core built into cover plate

1.2 FILTER ELEMENTS

HYDAC filter elements are validated and their quality is constantly monitored according to the following standards:

- ISO 2941
- ISO 2942
- ISO 2943
- ISO 3724
- ISO 3968
- ISO 11170
- ISO 16889

Contamination retention capacities in g

Glass fibre (ULP)			
RKMR KIT	5 µm	10 µm	25 µm
600	85	153	170
800	115	207	230

Glass fibre with pre-filter (UHC)			
RKMR KIT	5 µm	10 µm	20 µm
600	272	408	459
800	368	552	621

Filter elements are available with the following pressure stability values:
Glass fibre (ULP): 6 bar
Glass fibre with pre-filter (UHC): 6 bar

1.3 FILTER SPECIFICATIONS

Nominal pressure	up to 10 bar
Temperature range	-30 °C to +120 °C
Material of housing tube	Steel
Material of cover plate	EN-GJS-500
Bypass cracking pressure	3 bar (others on request)

1.4 SEALS

NBR (=Perbunan)

1.5 INSTALLATION

In-tank filter

1.6 SPECIAL MODELS AND ACCESSORIES

- without magnetic core
- air bleed valve in cover plate
- protective strainer for bypass and anti-cavitation valve

1.7 SPARE PARTS

See Original Spare Parts List

1.8 CERTIFICATES AND APPROVALS

Test certificate 2.2
Other approvals on request

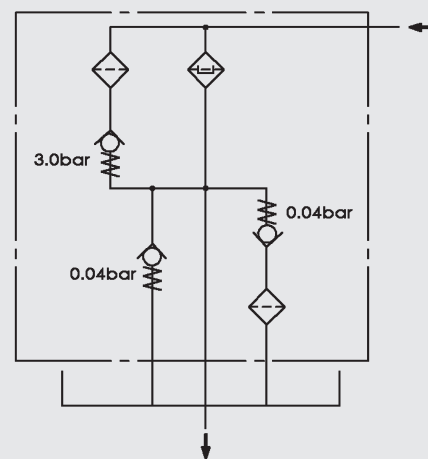
1.9 COMPATIBILITY WITH HYDRAULIC FLUIDS ISO 2943

- Hydraulic oils H to HLPD DIN 51524
- Lubrication oils DIN 51517, API, ACEA, DIN 51515, ISO 6743
- Compressor oils DIN 51506
- Biodegradable operating fluids VDMA 24568 HETG, HEES, HEPG
- Fire-resistant fluids HFA, HFB, HFC and HFD
- Operating fluids with high water content (>50% water content) on request

1.10 IMPORTANT INFORMATION

- Filter housings must be earthed.
- When using electrical clogging indicators, the electrical power supply to the system must be switched off before removing the clogging indicator connector.

Symbol for hydraulic systems



2. MODEL CODE (also order example)

RKMR ULP 800 KIT 10 W 1 . X /-V

2.1 COMPLETE FILTER

Filter type

RKMR

Filter material of element

ULP Glass fibre

UHC Glass fibre with pre-filter

Size of filter or element

RKMR: 600, 800

In-tank version

KIT filter cover plate and element spigot only

Filtration rating in μm

ULP : 5, 10, 25

UHC : 5, 10, 20

Type of clogging indicator

W without port, no clogging indicator

Type code

1

Modification number

X the latest version is always supplied

Supplementary details

no details = standard bypass cracking pressure B3 = 3 bar

B. special bypass cracking pressure

V FPM seals

OM without magnetic core

NRF protective strainer for anti-cavitation valve

BRF protective strainer for bypass valve

2.2 REPLACEMENT ELEMENT

0800 R 010 ULP /-V

Size

0600, 0800

Type

R

Filtration rating in μm

ULP : 005, 010, 025

UHC : 005, 010, 020

Filter material

ULP, UHC

Supplementary details

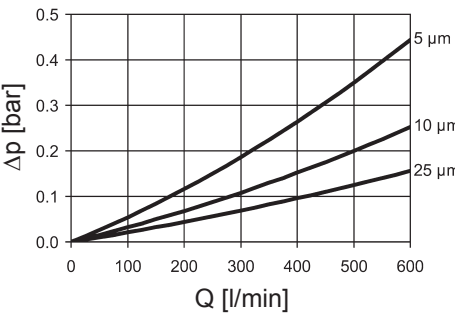
V (for descriptions, see point 2.1)

3. FILTER CALCULATION / SIZING

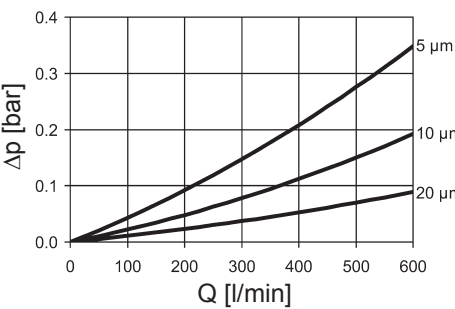
3.1 GRAPHS FOR COMPLETE FILTER

The total pressure drop graphs apply to mineral oil with a density of 0.86 kg/dm³ and a kinematic viscosity of 30 mm²/s.

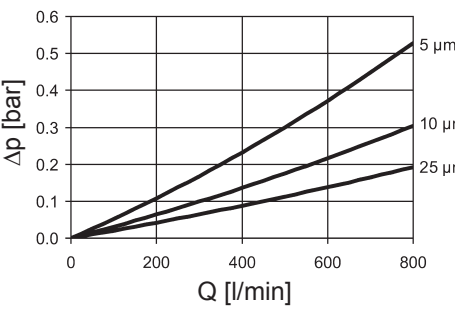
RKMR 600 KIT: ULP



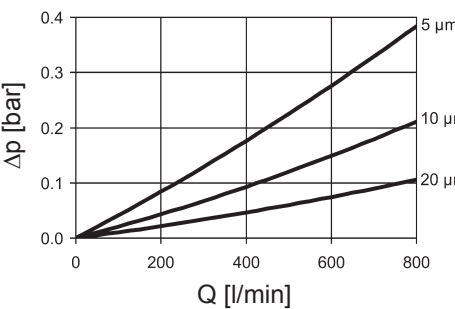
RKMR 600 KIT: UHC



RKMR 800 KIT: ULP

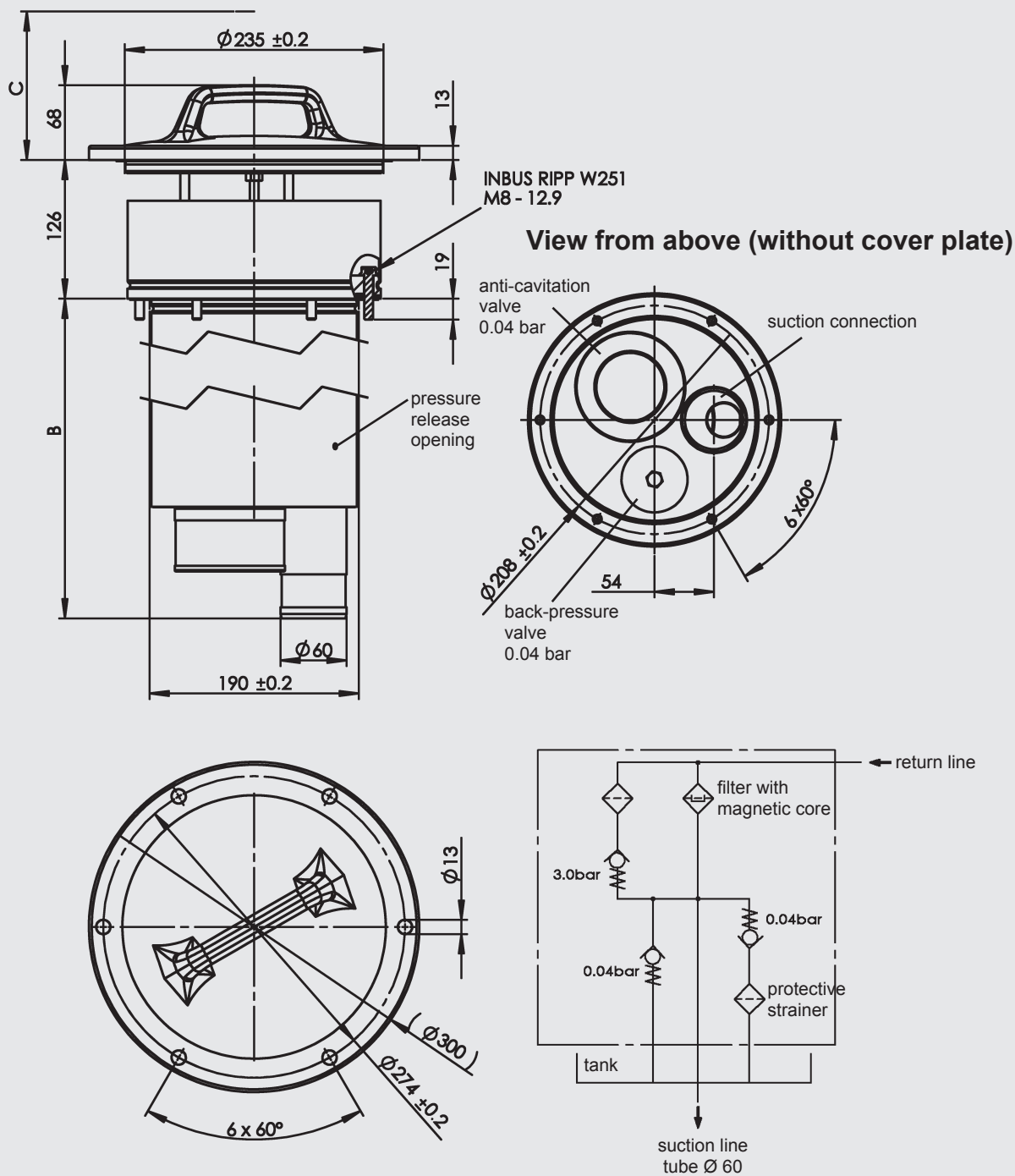


RKMR 800 KIT: UHC



4. DIMENSIONS

RKMR 600 - 800 KIT



RKMR KIT	B	C min.	Weight incl. element [kg]
600	695	570	29.4
800	807	685	32.4

NOTE

The information in this brochure relates to the operating conditions and applications described.
For applications or operating conditions not described, please contact the relevant technical department.
Subject to technical modifications.

HYDAC Filbertechnik GmbH
Industriegebiet
D-66280 Sulzbach/Saar
Tel.: 0 68 97 / 509-01
Fax: 0 68 97 / 509-300
Internet: www.hydac.com
E-Mail: filter@hydac.com