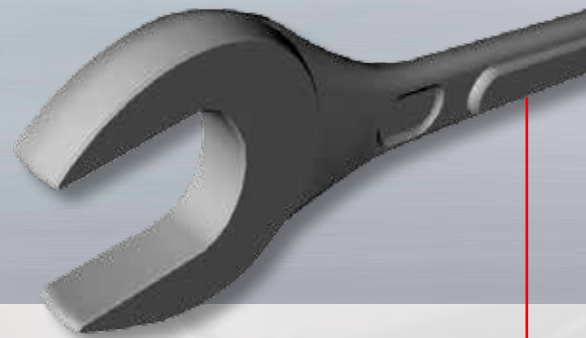


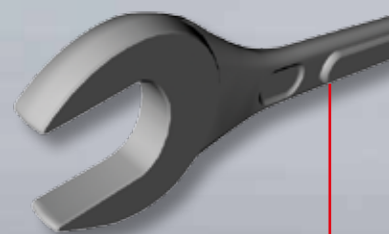
HYDAC SERVICE



Price List 2018

Field Service





Price List 2018

Field Service

Contents

Page 2: Services

Page 5: Hourly Rates for Service Personnel



Address / contact for all listed services

HYDAC Systems & Services GmbH

Werk 13

Friedrichsthaler Str. 15

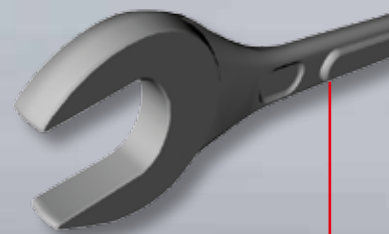
66540 Neunkirchen-Heinitz

Tel.: +49 (0) 6897 – 509 – 8585

Fax: +49 (0) 6897 – 509 – 324

E-mail: service@hydac.com

Internet: www.hydac.com



Price List 2018 Field Service

Services

■ A programme individually tailored to the customer

The HYDAC Servicenter, together with its service partners, offers you a complete package of services. After in-depth consultation, you can create a service package tailored to your needs. Whether it be support of existing in-house maintenance or sub-contracting the complete package, we will always find the best solution for you. For the following services we will be pleased to draw up an individual quotation at a fixed price. Our colleagues at Field Service are there to advise you.

■ Commissioning

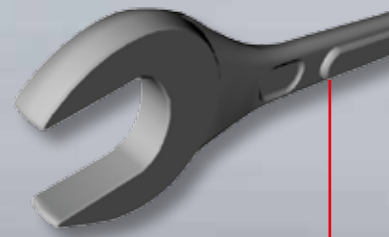
From setup and installation, through to pipework and system flushing, and finally to pressure testing and actual commissioning, an experienced team of project supervisors, electronic engineers, electricians, hydraulic engineers, fitters and welders are available for assignments around the globe.

■ Inspection

Regular scrutiny of the operating and system parameters guards against expensive stoppages. The HYDAC Servicenter monitors, for example, the oil condition, oil level, filter condition, accumulator pressures and valve settings. Switching shocks and vibrations are recorded using the latest measurement technology, parameters analysed and logged.

■ Optimisation

In many applications, rapidly changing quality requirements cause machinery to become obsolescent with alarming speed. Instead of buying new, it is often a technically and economically advantageous alternative to convert and modernise the components and systems in use.



Price List 2018

Field Service

Services

Technical cleanliness

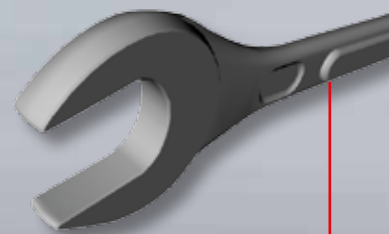
HYDAC Servicenter conducts component cleanliness analyses based on existing standards. The testing includes both gravimetric (weight in mg) and granulometric (longest particle in μm) analysis. This data is evaluated relative to the component, the component surface or the volume of the complete system.

Condition monitoring

CM-Expert "H" is a high-performance monitoring / archiving and control system which can be installed on any standard PC. Its decentralised structure makes the system extremely reliable, failsafe and flexible for use in production systems. As regards connecting sensors and actuators, operating and signal components, control tasks and data exchange with other systems, the use of the data acquisition unit (DAU) ensures that the system has endless possibilities. Please request our detailed information sheet.

Calibration services

Inspection of measuring and test equipment is incorporated as an essential Quality Assurance element for standard calibration in the standards series DIN EN ISO 9000-9004. Inspection of measuring and test equipment should be a guarantee that all test equipment relevant for product quality, measures "accurately". In order to guarantee this, the test equipment must be calibrated regularly and must be traceable to national measurement standards. In addition the readings taken must be documented. Optimise the quality of your test equipment by using the calibration service at HYDAC Servicenter or at your own premises in our mobile calibration laboratory. All the calibration equipment we use is traceable to national and international measurement standards.



Price List 2018

Field Service

Services

■ Fluid engineering

By entering into a full-service or maintenance contract you will receive a coordinated package of services – from the supply of media and components, through engineering to hydraulics and facility services that are geared towards saving maintenance costs, saving on investment costs and optimising labour costs.

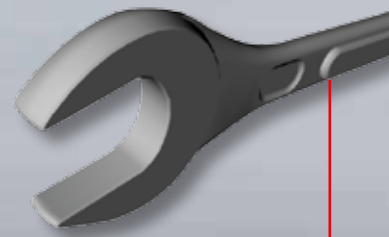
■ Fluid handling

Fresh oil filling, tank cleaning or complete oil change. Professional handling when transporting fluids over distances of up to 120 m and volumes up to 200 m³ including flushing of pipes. Cleaning, filling via filtration units and flushing of the system in the main circuit to achievement of the required cleanliness class incl. complete documentation of work and measured values with service log kept next to the machine.

■ Helpline

If technical support on products in the HYDAC family is required, our customers can contact us during normal office hours. Please ask us for a quote for 24h on-call standby service.

Price List 2018 Field Service



Hourly rates for service personnel

| Hourly rates for work, travel and waiting times Monday-Friday, 8h each | EU and Western Europe | Worldwide |
|--|-----------------------|-----------|
| Installation and fitting Performing all cleaning and set-up work along with general fitting. Support with assembly, maintenance and cleaning of components, subsystems and systems in hydraulics and lubrication | €80/h | €86/h |
| General hydraulic service Installation, commissioning, trouble-shooting, repair and maintenance of components, subsystems and systems in hydraulics and lubrication | €119/h | €129/h |
| Site management/supervising Coordination and management of operations on site and supervision of compliance with quality, regulations and time schedules | €140/h | €151/h |
| Electronics Installation, trouble-shooting and repairs of electronic components, subsystems and control technology | €131/h | €141/h |
| Engineering and programming Engineering services include designing, construction and programming as part of pipe engineering, planning, control development, Condition Monitoring or calibration services | €179/h | €193/h |

| Additional payments for overtime | |
|---|----------------|
| 9th + 10th hour as well as night work 22:00–06:00 | 25% surcharge |
| From 11th hour and Saturdays | 50% surcharge |
| Sunday and National Holidays | 100% surcharge |

| Travel and related costs | |
|--------------------------|---|
| Vehicle costs | €1.20/km |
| Allowance | According to BMTV (German Federal Collective Agreement) |
| Accommodation etc. | As per receipts |
| Airfares and other costs | On time & material basis |

Our service personnel are assigned to projects according to objective and expert criteria and on the basis of our general installation conditions. Unless otherwise agreed, the service personnel are equipped with industry-standard tools, appropriate equipment and consumables. The costs of these are included in the hourly rates.