

Description

The Oil Separator Water OLSW is used for separating free mineral oil from aqueous cleaning fluids in accordance with the coalescence principle.

This involves minute oil droplets settling on fibres of the deployed filter elements (HYDAC OilRheo), joining to form larger oil droplets and rising to the top on the outside of the filter elements. The oil that has been collected can be drained using a valve.

To ensure optimum oil removal, a pre-filter for filtering out solid particle contamination is integrated into the OLSW. The unit is designed for installation in the bypass flow.

The OLSW-30 is suited to systems with small (<1000 l) to medium (<2500 l) tank volumes (depending on the application) or applications with a medium amount of oil contamination.

The OLSW-100 with its high circulation rate is designed for systems with medium (<2500 l) and large (>2500 l) tank volumes (depending on the application) and high levels of oil contamination.

The operator display for control makes the unit easy to use. It can also display important process parameters.

Oil Separator Water OLSW

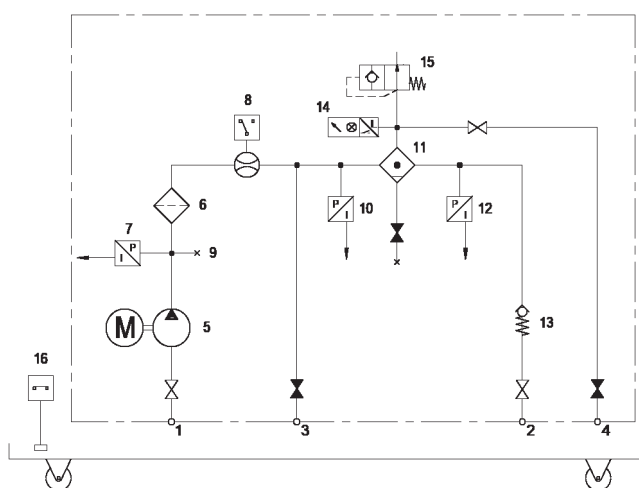
Advantages

- Cost-effective removal of oil from aqueous fluids
- Protection of the OilRheo elements via pre-filtration
- Extended service life of the aqueous cleaning fluid used
- It is not necessary to steady the washing bath for oil removal
- Compliance with environmental protection and disposal regulations
- Installation in the bypass flow

Technical data

	OLSW-30	OLSW-100
Flow rate	20 – 30 l/min	60 – 100 l/min
Permitted fluids	Water-based cleaning fluids with an oil content < 15 volume %	
Permitted ambient temperature range	5 to 50 °C	
Permitted maximum fluid temperature	0 – 80 °C	
Operating pressure	max. 6 bar	
Permitted inlet pressure	-0.3 to 0.4 bar	
Permitted outlet pressure	0.5 bar	
Inlet connection	22L	42L
Outlet connection	18L	28L
Weight	approx. 220 kg	approx. 300 kg
Supply voltage	400 V / 50 Hz / 3 ph.	
Nominal current	16 A	
Protection class according to DIN 40050	IP54	

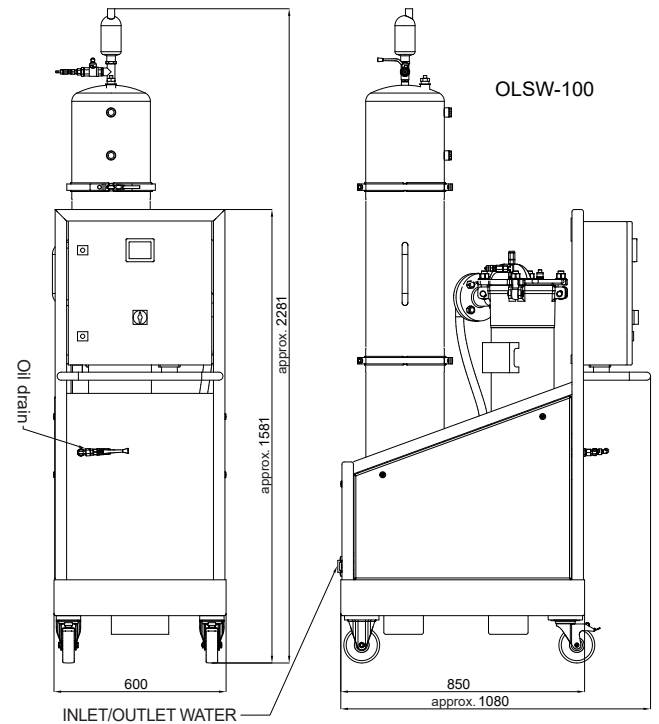
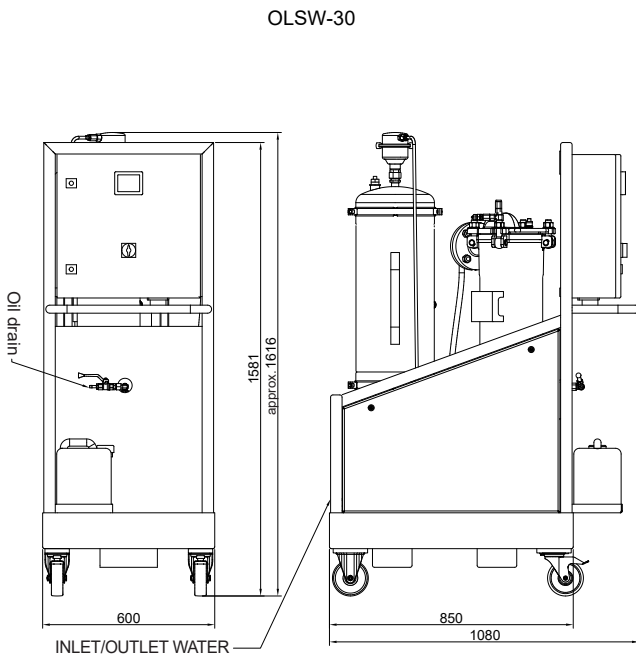
Hydraulic circuit



Item	Designation
1	Inlet water
2	Outlet water
3	Drain
4	Oil drain
5	Motor-pump group
6	Pre-filter
7	Pressure sensor, inlet, filter
8	Flow switch

Item	Designation
9	Air vent, pre-filter
10	Pressure sensor, inlet, coalescing housing
11	Coalescing housing
12	Pressure sensor, outlet, coalescing housing
13	Non-return valve
14	Phase boundary sensor
15	Automatic breather
16	Tray sensor

DIMENSIONS



Model code

OLSW - 30 - M - 400/50/3 - 01 - F - AU - Z

Product

OLSW = Oil Separator Water

Flow rate

30 = max. 30 l/min.

100 = max. 100 l/min.

Model version

M = mobile Oil Water Separator

S = stationary Oil Water Separator

Motor voltage

230/50/3 = 230 volts – 50 hertz – 3-phase

380/50/3 = 380 volts – 50 hertz – 3-phase

400/50/3 = 400 volts – 50 hertz – 3-phase

415/50/3 = 415 volts – 50 hertz – 3-phase

220/60/3 = 220 volts – 60 hertz – 3-phase

440/60/3 = 440 volts – 60 hertz – 3-phase

480/60/3 = 480 volts – 60 hertz – 3-phase

Other voltages are available on request!

Series

XX = series (determined by manufacturer)

Options

F = remote access

AU = automatic oil drain

SL = hose set (2x 3m without suction lance)

SK = skimmer

Multiple options can be chosen!

Additional specifications must be given in full detail

Note

The data provided here refers to the standard version. Customer-specific requirements can also be implemented following a review.

The information in this brochure relates to the operating conditions and applications described.

For applications or operating conditions not described, please contact the relevant technical department.

Subject to technical modifications.

HYDAC Systems & Services GmbH

Geschäftsbereich Systemtechnik

Werk 14 Sonnenallee 1

D-66287 Quierschied-Göttelborn

Campus Göttelborn Süd

Tel: +49 (0)6897 - 509-01

Internet: www.hydac.com

E-mail: systeme@hydac.com