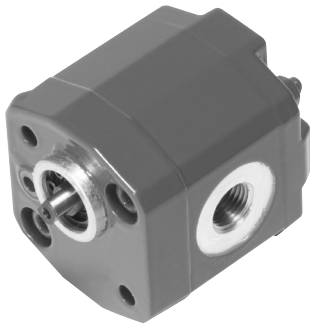


External Gear Pumps for Open Loop Hydraulic Systems

6. EXTERNAL GEAR PUMPS

6.1 SIZE 0

PGE100



Series	Geometric displacement [ccm/rev]	Operating pressure			Maximum drive speed [rpm]
		Rated [bar]	Intermittent [bar]	Peak [bar]	
PGE100-25	0.25	170	200	200	3500
PGE100-30	0.30			210	
PGE100-50	0.50			230	
PGE100-75	0.75			230	
PGE100-100	1.00			210	
PGE100-125	1.25	145	175	210	3000
PGE100-150	1.50			200	
PGE100-175	1.75			130	160
PGE100-200	2.00	170	2000		

6.2 SIZE 1

PGE101



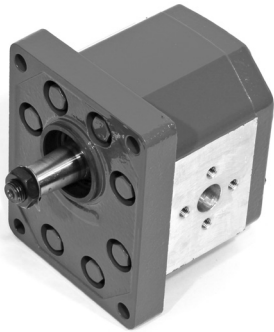
Series	Geometric displacement [ccm/rev]	Operating pressure			Maximum drive speed [rpm]
		Rated [bar]	Intermittent [bar]	Peak [bar]	
PGE101-100	1	250	280	300	3500
PGE101-125	1.25				
PGE101-160	1.6				
PGE101-200	2				
PGE101-250	2.5				
PGE101-315	3.15				
PGE101-365	3.65				
PGE101-420	4.2				
PGE101-500	5	200	220	230	3000
PGE101-610	6.1				2500
PGE101-740	7.4				170



6.3 SIZE 2

PGE102

Series	Geometric displacement [ccm/rev]	Operating pressure			Maximum drive speed [rpm]
		Rated [bar]	Intermittent [bar]	Peak [bar]	
PGE102-450	4.5	250	280	300	3500
PGE102-630	6.3				
PGE102-820	8.2				
PGE102-1000	10				
PGE102-1100	11.3				
PGE102-1200	12				
PGE102-1400	14				
PGE102-1500	15				
PGE102-1600	16	220	250	270	3000
PGE102-1730	17.3				
PGE102-1900	19	200	220	230	2500
PGE102-2200	22	180	200	210	
PGE102-2500	25	160	180	190	
PGE102-2800	28	120	140	150	



6.4 SIZE 3

PGE103

Series	Geometric displacement [ccm/rev]	Operating pressure			Maximum drive speed [rpm]
		Rated [bar]	Intermittent [bar]	Peak [bar]	
PGE103-2000	20	250	270	300	3000
PGE103-2250	22.5				
PGE103-2500	25				
PGE103-2800	28				
PGE103-3200	32	240	260	280	3000
PGE103-3600	36				
PGE103-4200	42	230	250	270	2800
PGE103-4600	46	210	230	250	2500
PGE103-5000	50	185	200	230	2300
PGE103-5500	55	165	180	200	2100
PGE103-6000	60	150	165	180	1750



6.5 MULTIPLE PUMPS

PGE104

Series	Sizes	Operating pressure			Maximum drive speed [rpm]
		Rated [bar]	Intermittent [bar]	Peak [bar]	
PGE104-	1 + 1	max. 250	max. 280	max. 300	max. 3500
	2 + 2				
	2 + 1				
	3 + 3				max. 3000
	3 + 2				
	3 + 1				
	1 + 1 + 1				max. 3500
	2 + 2 + 2				
	2 + 2 + 1				
	2 + 1 + 1				
	3 + 3 + 3				max. 3000
	3 + 3 + 2				
	3 + 3 + 1				
	3 + 2 + 2				
3 + 2 + 1					
3 + 1 + 1					