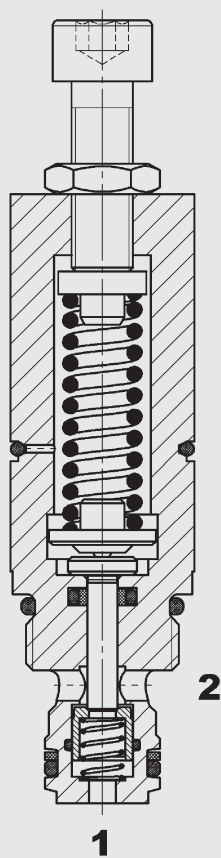


FUNCTION



The pressure sequence valve is a direct-acting, spring-loaded poppet valve with built-in check valve. In the normal position, the path from port 1 to port 2 is blocked.

If the pressure exceeds the pre-set spring tension, the piston and poppet move together in a closed condition to the upper limit of the poppet. If the pressure continues to rise, the piston unblocks the path from 1 to 2 so that oil can flow to the additional consumers. In the return direction from port 2 to 1, the main piston is pushed back by the spring into its initial position and the poppet opens against the corresponding spring and allows free flow from port 2 to port 1. The spring chamber pressure is vented to atmosphere.

FEATURES

- To connect additional consumers once certain pressures are reached
- To connect cylinders in sequence circuits
- As a pressure relief valve if free flow is required in the opposite direction
- Excellent dynamic performance
- Excellent stability throughout pressure range
- Adjustable throughout flow range
- Various pressure ranges up to 350 bar available
- Optional zinc-plated version available (type -04)

SPECIFICATIONS*

Operating pressure:	max. 350 bar
Nominal flow:	max. 20 l/min
Pressure setting ranges:	100 / 200 / 250 / 350 bar
Sequence pressure tolerance:	± 5 bar below 100 bar, above 100 bar ±5%
Leakage:	leakage-free max. 5 drops/min (0,25 cm ³ /min) at 350 bar
Cracking pressure from 2→1:	0.5 bar
Media operating temperature range:	min. -20 °C to max. +120 °C
Ambient temperature range:	min. -20 °C to max. +120 °C
Operating fluid:	hydraulic oil to DIN 51524 Part 1, 2 and 3
Viscosity range:	min. 7.4 mm ² /s to max. 420 mm ² /s
Filtration:	Class 20/18/15 according to ISO 4406 or cleaner
MTTF _d :	150 - 1200 years, according to DIN EN ISO 13849-1
Installation:	No orientation restrictions, preferably horizontal
Materials:	Valve body: high tensile steel Piston: hardened and ground steel Seals: FKM (standard) NBR (optional, media temperature range -20 °C to +100 °C) Back-up rings: PTFE
Cavity:	06020
Weight:	0.22 kg

* see "Conditions and instructions for valves" in brochure 53.000

MODEL CODE

DZ5E - 01X - 200 V 180

Basic model

Pressure sequence valve, metric

Type

01 = standard (surface zinc phosphate)
04 = zinc-plated

Pressure setting range

100 = to 100 bar
200 = to 200 bar
250 = to 250 bar
350 = to 350 bar

Type of adjustment

V = Allen head (standard)
Other adjustment types on request

Sequence pressure setting

No details = no setting
180 = 180 bar
Other sequence pressures on request

Standard models

Model code	Part No.
DZ5E-01X-100V	710297
DZ5E-01X-200V	710298
DZ5E-01X-250V	710296
DZ5E-01X-350V	710299

Other models on request

Standard in-line bodies

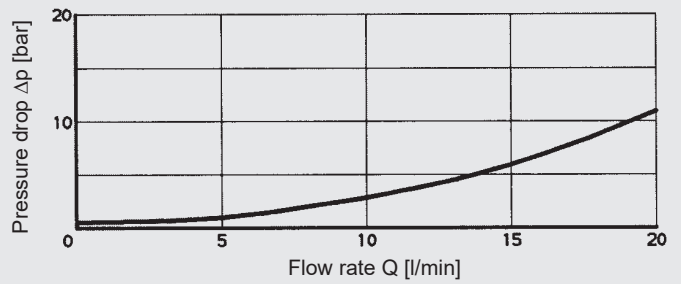
Code	Part No.	Material	Ports	Pressure
R06020-01X-01	275266	Steel, zinc-plated	G3/8"	350 bar
R06020-10X-01	276842	Steel, zinc-plated	G3/8"	350 bar

Seal kits

Code	Part No.
SEAL KIT 06020-NBR	3119017
SEAL KIT 06020-FKM	3262477

TYPICAL PERFORMANCE

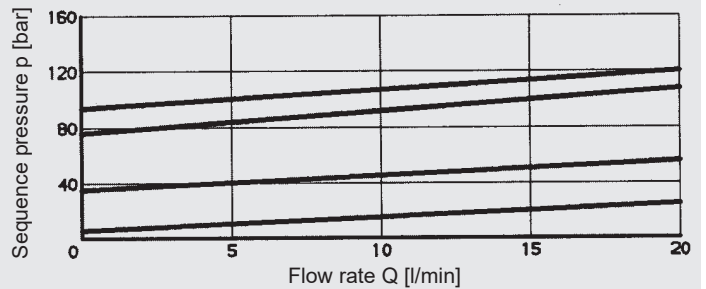
Pressure drop, dependent on flow rate
Measured at $v = 36 \text{ mm}^2/\text{s}$ and $T_{\text{oil}} = 50 \text{ }^\circ\text{C}$,
Flow direction 2→1



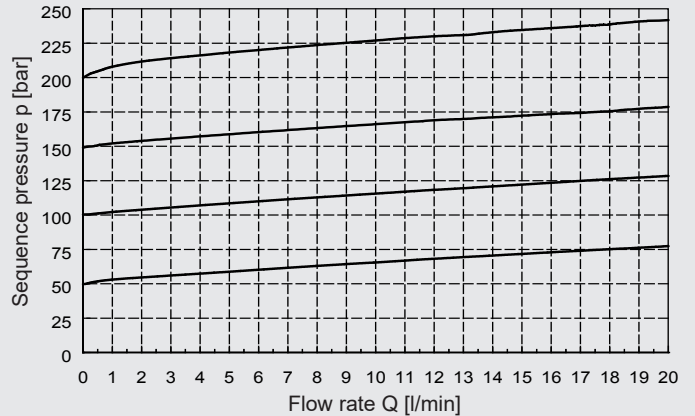
Sequence pressure, dependent on flow rate

Measured at $v = 36 \text{ mm}^2/\text{s}$ and $T_{\text{oil}} = 50 \text{ }^\circ\text{C}$,
Flow direction 1→2

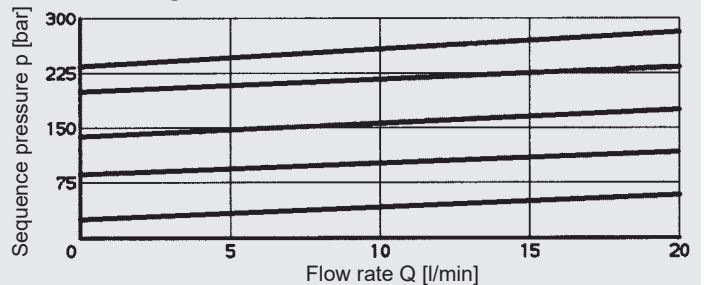
Pressure range ... 100 bar



Pressure range ... 100 bar



Pressure range ... 250 bar



Pressure range ... 350 bar

