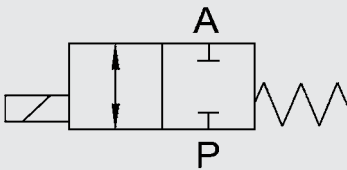


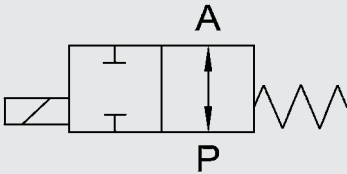
2/2 Way Coaxial Valve

CX03M to CX05M direct acting

Switching function



NC (normally closed)



NO (normally open)

Model code

(also example order)

CX03M **2/2** **D** **C** **2** **10** **040** **014** **24V**

Type

CX03M = CX03M series
 CX04M = CX04M series
 CX05M = CX05M series

Ways

2/2 = The number of ways

Control

D = Direct acting

Switching function

C = NC - normally closed
 O = NO - normally open*

Body material

2 = Brass (valve), aluminium (block)

Nominal size

10 = DN 10
 15 = DN 15
 20 = DN 20
 25 = DN 25
 32 = DN 32

Pressure range

040 = CX03 > 0 - 40 bar
 064 = CX04 > 0 - 64 bar
 100 = CX05 > 0 - 100 bar

Connection

014 = G $\frac{1}{4}$ - DN 10
 038 = G $\frac{3}{8}$ - DN 10, DN 15
 012 = G $\frac{1}{2}$ - DN 10, DN 15, DN 20
 034 = G $\frac{3}{4}$ - DN 15, DN 20, DN 25
 100 = G1 - DN 20, DN 25, DN 32
 114 = G1 $\frac{1}{4}$ - DN 25, DN 32
 112 = G1 $\frac{1}{2}$ - DN 32

Nominal voltage

24V = 24V DC
 230V = 230 V AC 40-60 Hz
 Special voltage on request

Order data

- Nominal size
- Connection
- Function NC/NO
- Operating pressure
- Flow rate
- Medium
- Medium temperature
- Ambient temperature
- Nominal voltage
- Number of module blocks

*optional

Technical specifications

| | | |
|-------------------------------|---|--|
| Control | 2/2 way valve, direct-acting | |
| Nominal size | DN 10 to DN 32 | |
| Pressure range (see table) | CX03M – 2/2 CX04M – 2/2 CX05M – 2/2 | PN 0 to PN 40 PN 0 to PN 64 PN 0 to PN 100 |
| Connection | Valve: G ¼ - G1½ Block: G ½ - G2 | |
| Body material | Single valve: brass Block: aluminium | |
| Material of seals | Static: Dynamic: Seat seal: | FKM PTFE FKM, PTFE |
| Back pressure resistant | Up to 16 bar | |
| Media | Gaseous, liquid, contaminated | |
| Direction of flow | P → A as marked A → P max. 16 bar | |
| Temperature of medium | -10 °C to +100 °C | |
| Ambient temperature | -10 °C to +50 °C | |
| Mounting position | In any position | |
| Limit switch | Inductive* | |
| Fixing | Angle bracket* | |

Electrical part

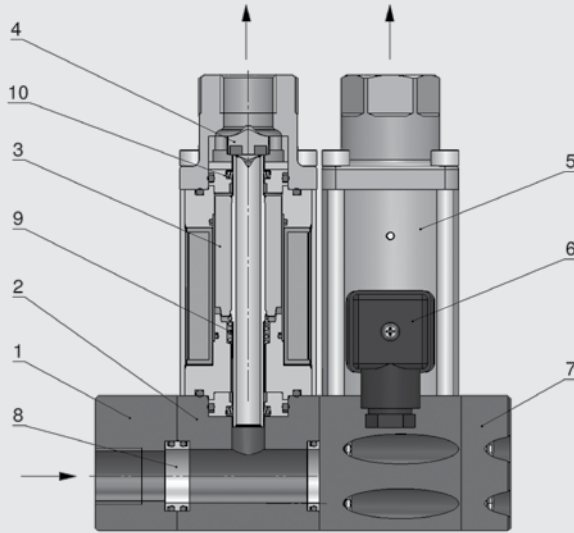
| | |
|-------------------|--|
| Supply voltage | DC: 24 V AC: 230 V 40-60 Hz |
| Electrical part | DC: DC magnet AC: DC magnet with integrated rectifier |
| Connection | Connector plug to DIN EN 175301-803 type A Connector plug to DESINA M12x1 * Illuminated plug with varistor * |
| Voltage tolerance | + / - 10% to VDE 0580 |
| Duty cycle | 100% duty cycle |
| Protection class | IP 65 when fitted with connector plug |

On request we would be happy to discuss your requirements for further options and accessories.

*optional

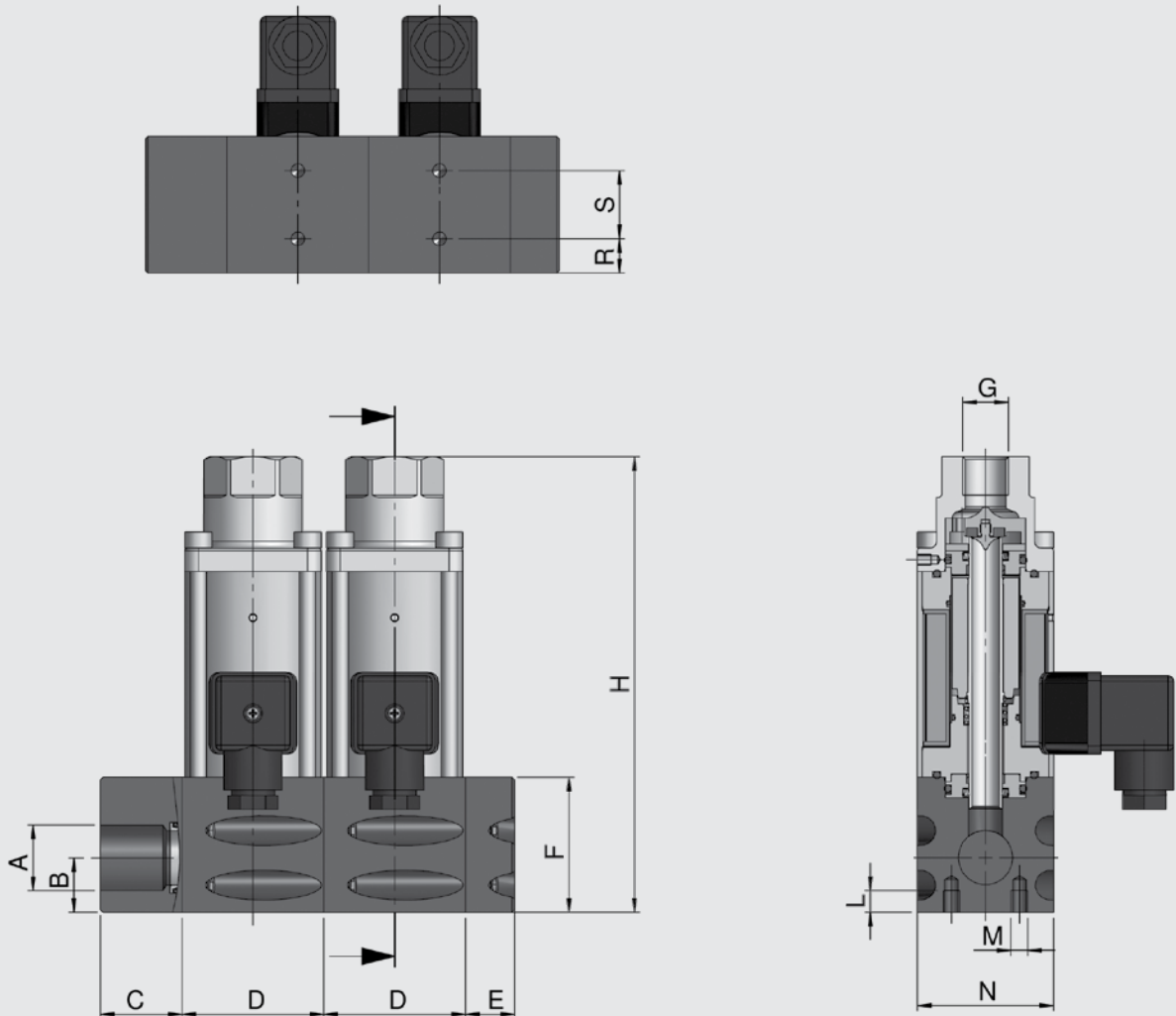
| Designation | DN [mm] | Pressure [bar] | Connection | Kv value [m³/h] | Wattage [W] | | Weight [kg] |
|-------------|------------|-------------------|--------------|--------------------|-------------|-------------|----------------|
| | | | | | 24V | 230 V 50 Hz | |
| CX03M | 10 | 0 - 40 | G¼, G¾, G½ | 2.1 | 35 | 41 | 1.7 |
| | 15 | 0 - 40 | G¾, G½, G¾ | 5.2 | 40 | 45 | 3.6 |
| | 20 | 0 - 40 | G½, G¾, G1 | 7.0 | 45 | 53 | 5.4 |
| | 25 | 0 - 40 | G¾, G1, G1¼ | 12.3 | 60 | 68 | 7.1 |
| | 32 | 0 - 40 | G1, G1¼, G1½ | 20.0 | 73 | 76 | 12.6 |
| CX04M | 10 | 0 - 64 | G¼, G¾, G½ | 2.1 | 44 | 53 | 1.7 |
| | 15 | 0 - 64 | G¾, G½, G¾ | 5.2 | 50 | 55 | 3.6 |
| | 20 | 0 - 64 | G½, G¾, G1 | 7.0 | 53 | 59 | 5.4 |
| | 25 | 0 - 64 | G¾, G1, G1¼ | 12.3 | 77 | 85 | 7.1 |
| | 32 | 0 - 64 | G1, G1¼, G1½ | 20.0 | 73 | 76 | 12.6 |
| CX05M | 10 | 0 - 100 | G¼, G¾, G½ | 2.1 | 44 | 53 | 1.7 |
| | 15 | 0 - 100 | G¾, G½, G¾ | 5.2 | 50 | 55 | 3.6 |
| | 20 | 0 - 100 | G½, G¾, G1 | 7.0 | 53 | 59 | 5.4 |
| | 25 | 0 - 100 | G¾, G1, G1¼ | 12.3 | 77 | 85 | 7.1 |
| | 32 | 0 - 100 | G1, G1¼, G1½ | 20.0 | 73 | 76 | 12.6 |

Sectional drawing







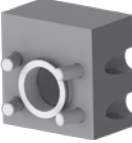
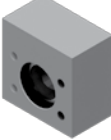

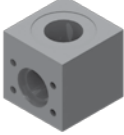
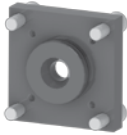
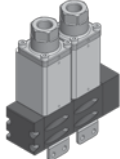

| Item | Designation | Quantity |
|------|------------------------|----------|
| 1 | Connecting block, left | 1 |
| 2 | Block module | 2 |
| 3 | Armature | 2 |
| 4 | Valve seat | 2 |
| 5 | Magnet | 2 |
| 6 | Connector plug | 2 |
| 7 | Cover | 1 |
| 8 | Spacer | 3 |
| 9 | Spring | 1 |
| 10 | PTFE rod seal | 2 |

Dimensions


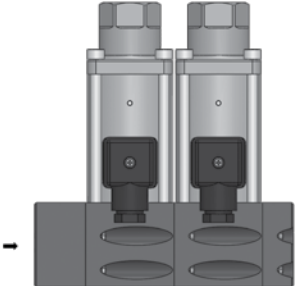
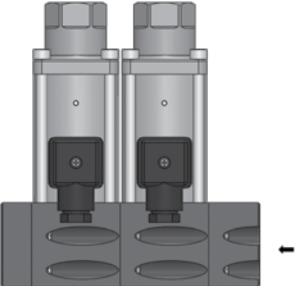
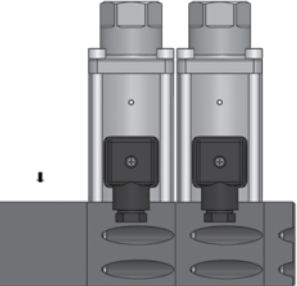
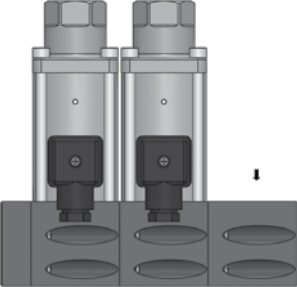


| DN | A | B [mm] | C [mm] | D [mm] | E [mm] | F [mm] | H [mm] | G | L [mm] | M [mm] | N [mm] | R [mm] | S [mm] |
|----|--|--------|--------|--------|--------|--------|--------|---|--------|--------|--------|--------|--------|
| 10 | G $\frac{1}{2}$, G $\frac{3}{4}$, G1 | 20 | 42 | 52 | 18 | 49.5 | 167 | G $\frac{1}{4}$, G $\frac{3}{8}$, G $\frac{1}{2}$ | 8 | M6 | 50 | 13 | 25 |
| 15 | G $\frac{1}{2}$, G $\frac{3}{4}$, G1, G1 $\frac{1}{4}$ | 28 | 42 | 72 | 27 | 69.5 | 207 | G $\frac{3}{8}$, G $\frac{1}{2}$, G $\frac{3}{4}$ | 8 | M6 | 70 | 21 | 28 |
| 20 | G1, G1 $\frac{1}{4}$, G1 $\frac{1}{2}$ | 34 | 32 | 82 | 32 | 79.5 | 235 | G $\frac{1}{2}$, G $\frac{3}{4}$, G1 | 10 | M8 | 80 | 25 | 34 |
| 25 | G1, G1 $\frac{1}{4}$, G1 $\frac{1}{2}$ | 36 | 32 | 92 | 32 | 89.5 | 265 | G $\frac{3}{4}$, G1, G1 $\frac{1}{4}$ | 10 | M8 | 90 | 20 | 50 |
| 32 | G1 $\frac{1}{4}$, G1 $\frac{1}{2}$, G2 | 50 | 34 | 118 | 34 | 114.5 | 302 | G1, G1 $\frac{1}{4}$, G1 $\frac{1}{2}$ | 10 | M8 | 115 | 34 | 50 |

Accessories

| | | |
|--------------------------|---|---|
| Joining rings | Blanking ring |  |
| | Spacer ring |  |
| End caps | End cap, right |  |
| | End cap, left |  |
| Connecting blocks | Connecting block, right |  |
| | Connecting block, left |  |
| | Connecting block, right Angled version G1 on top DN10 |  |
| | Connecting block, left Angled version G1 on top DN10 |  |
| Reducing adapter | Reducing adapter |  |
| Angle bracket |  |  |

Examples of ordering codes

| | | |
|---|--|--|
|  | <p>Basic valve</p> | <p>CX03M-2/2-D/C-2/10/040/012/24V</p> |
|  | <p>Connecting block, left</p> | <p>CX03M-2/2-D/C-2/10/040/012/24V -WS-2XL</p> |
|  | <p>Connecting block, right</p> | <p>CX03M-2/2-D/C-2/10/040/012/24V -WS-2XR</p> |
|  | <p>Connecting block, left 90° Angled version, outlet on top</p> | <p>CX03M-2/2-D/C-2/10/040/012/24V -WS-2XLO</p> |
|  | <p>Connecting block, right 90° Angled version, outlet on top</p> | <p>CX03M-2/2-D/C-2/10/040/012/24V -WS-2XRO</p> |

NOTE

The information in this brochure relates to the operating conditions and applications described.

For applications and operating conditions not described, please contact the relevant technical department.

Subject to technical modifications.

HYDAC Accessories GmbH
Hirschbachstr. 2
66280 Sulzbach/Saar
Tel.: +49 (0)6897 - 509-01
Fax: +49 (0)6897 - 509-1009
Internet: www.hydac.com
E-Mail: info@hydac.com

