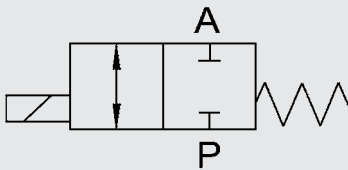


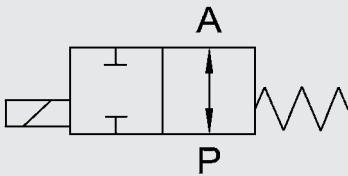
## 2/2 Way Coaxial Valve

CX03M to CX05M direct acting

### Switching function



NC (normally closed)



NO (normally open)

### Model code

(also example order)

**CX03M 2/2 D C 2 10 040 014 24V**

#### Type

CX03M = CX03M series  
 CX04M = CX04M series  
 CX05M = CX05M series

#### Ways

2/2 = The number of ways

#### Control

D = Direct acting

#### Switching function

C = NC - normally closed  
 O = NO - normally open\*

#### Body material

2 = Brass (valve), aluminium (block)

#### Nominal size

10 = DN 10  
 15 = DN 15  
 20 = DN 20  
 25 = DN 25  
 32 = DN 32

#### Pressure range

040 = CX03 > 0 - 40 bar  
 064 = CX04 > 0 - 64 bar  
 100 = CX05 > 0 - 100 bar

#### Connection

014 = G $\frac{1}{4}$  - DN 10  
 038 = G $\frac{3}{8}$  - DN 10, DN 15  
 012 = G $\frac{1}{2}$  - DN 10, DN 15, DN 20  
 034 = G $\frac{3}{4}$  - DN 15, DN 20, DN 25  
 100 = G1 - DN 20, DN 25, DN 32  
 114 = G1 $\frac{1}{4}$  - DN 25, DN 32  
 112 = G1 $\frac{1}{2}$  - DN 32

#### Nominal voltage

24V = 24V DC  
 230V = 230 V AC 40-60 Hz  
 Special voltage on request

### Order data

- Nominal size
- Connection
- Function NC/NO
- Operating pressure
- Flow rate
- Medium
- Medium temperature
- Ambient temperature
- Nominal voltage
- Number of module blocks

\*optional

## Technical specifications

|                               |   |  |
|-------------------------------|---|--|
| Control                       | 2/2 way valve, direct-acting              |  |
| Nominal size                  | DN 10 to DN 32                            |  |
| Pressure range<br>(see table) | CX03M – 2/2<br>CX04M – 2/2<br>CX05M – 2/2 | PN 0 to PN 40<br>PN 0 to PN 64<br>PN 0 to PN 100 |
| Connection                    | Valve: G ¼ - G1½<br>Block: G ½ - G2       |  |
| Body material                 | Single valve: brass<br>Block: aluminium   |  |
| Material of seals             | Static:<br>Dynamic:<br>Seat seal:         | FKM<br>PTFE<br>FKM, PTFE                         |
| Back pressure resistant       | Up to 16 bar                              |  |
| Media                         | Gaseous, liquid, contaminated             |  |
| Direction of flow             | P → A as marked<br>A → P max. 16 bar      |  |
| Temperature of medium         | -10 °C to +100 °C                         |  |
| Ambient temperature           | -10 °C to +50 °C                          |  |
| Mounting position             | In any position                           |  |
| Limit switch                  | Inductive*                                |  |
| Fixing                        | Angle bracket*                            |  |

## Electrical part

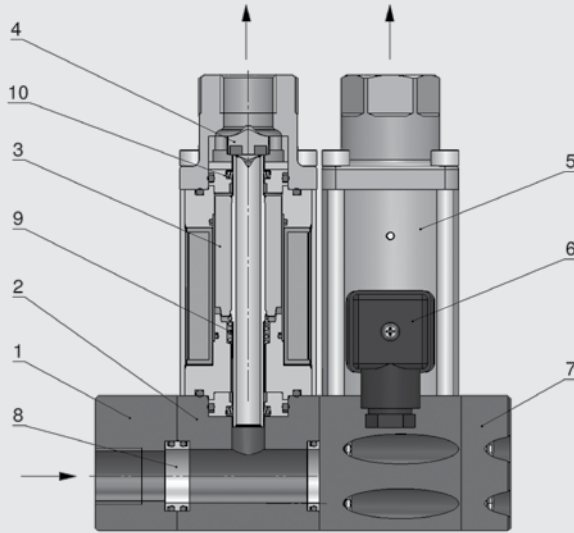
|                   |  |
|-------------------|--|
| Supply voltage    | DC: 24 V<br>AC: 230 V 40-60 Hz   |
| Electrical part   | DC: DC magnet<br>AC: DC magnet with integrated rectifier   |
| Connection        | Connector plug to DIN EN 175301-803 type A<br>Connector plug to DESINA M12x1 *<br>Illuminated plug with varistor * |
| Voltage tolerance | + / - 10% to VDE 0580  |
| Duty cycle        | 100% duty cycle  |
| Protection class  | IP 65 when fitted with connector plug  |

On request we would be happy to discuss your requirements for further options and accessories.

\*optional

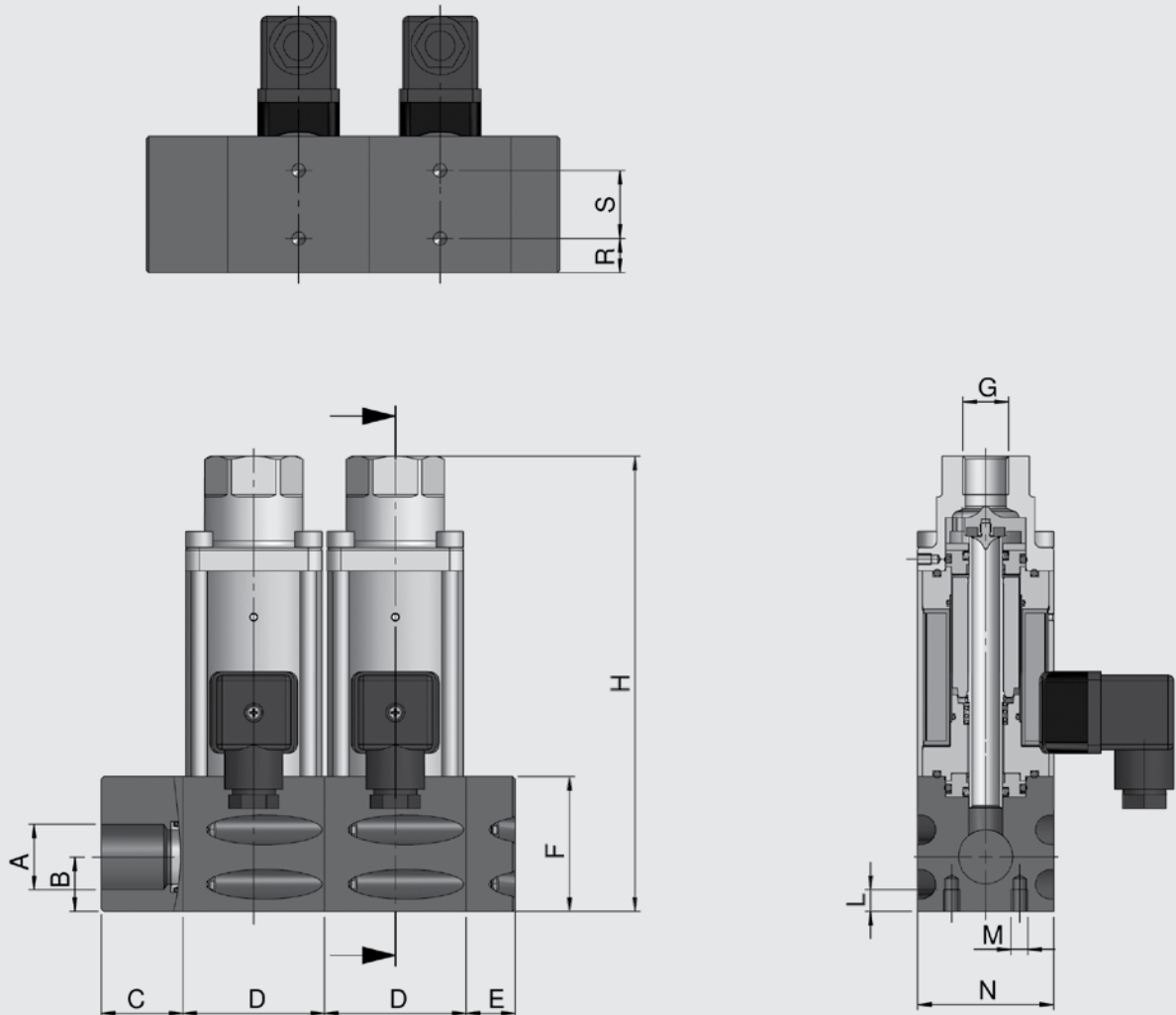
| Designation | DN<br>[mm] | Pressure<br>[bar] | Connection   | Kv value<br>[m³/h] | Wattage [W] |             | Weight<br>[kg] |
|-------------|------------|-------------------|--------------|--------------------|-------------|-------------|----------------|
|             |            |                   |              |                    | 24V         | 230 V 50 Hz |                |
| CX03M       | 10         | 0 - 40            | G¼, G¾, G½   | 2.1                | 35          | 41          | 1.7            |
|             | 15         | 0 - 40            | G¾, G½, G¾   | 5.2                | 40          | 45          | 3.6            |
|             | 20         | 0 - 40            | G½, G¾, G1   | 7.0                | 45          | 53          | 5.4            |
|             | 25         | 0 - 40            | G¾, G1, G1¼  | 12.3               | 60          | 68          | 7.1            |
|             | 32         | 0 - 40            | G1, G1¼, G1½ | 20.0               | 73          | 76          | 12.6           |
| CX04M       | 10         | 0 - 64            | G¼, G¾, G½   | 2.1                | 44          | 53          | 1.7            |
|             | 15         | 0 - 64            | G¾, G½, G¾   | 5.2                | 50          | 55          | 3.6            |
|             | 20         | 0 - 64            | G½, G¾, G1   | 7.0                | 53          | 59          | 5.4            |
|             | 25         | 0 - 64            | G¾, G1, G1¼  | 12.3               | 77          | 85          | 7.1            |
|             | 32         | 0 - 64            | G1, G1¼, G1½ | 20.0               | 73          | 76          | 12.6           |
| CX05M       | 10         | 0 - 100           | G¼, G¾, G½   | 2.1                | 44          | 53          | 1.7            |
|             | 15         | 0 - 100           | G¾, G½, G¾   | 5.2                | 50          | 55          | 3.6            |
|             | 20         | 0 - 100           | G½, G¾, G1   | 7.0                | 53          | 59          | 5.4            |
|             | 25         | 0 - 100           | G¾, G1, G1¼  | 12.3               | 77          | 85          | 7.1            |
|             | 32         | 0 - 100           | G1, G1¼, G1½ | 20.0               | 73          | 76          | 12.6           |

## Sectional drawing







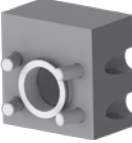
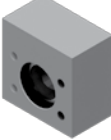

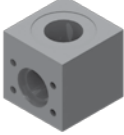
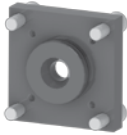
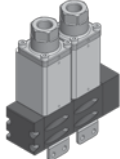

| Item | Designation            | Quantity |
|------|------------------------|----------|
| 1    | Connecting block, left | 1        |
| 2    | Block module           | 2        |
| 3    | Armature               | 2        |
| 4    | Valve seat             | 2        |
| 5    | Magnet                 | 2        |
| 6    | Connector plug         | 2        |
| 7    | Cover                  | 1        |
| 8    | Spacer                 | 3        |
| 9    | Spring                 | 1        |
| 10   | PTFE rod seal          | 2        |

## Dimensions


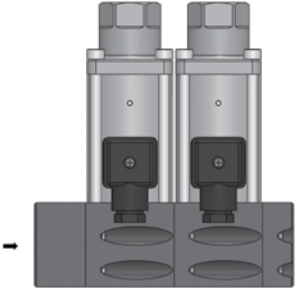
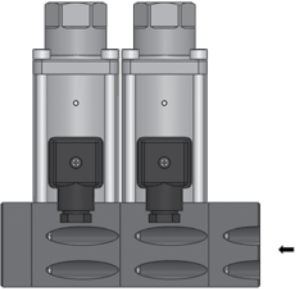
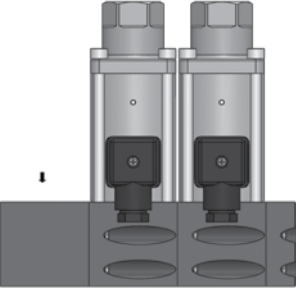
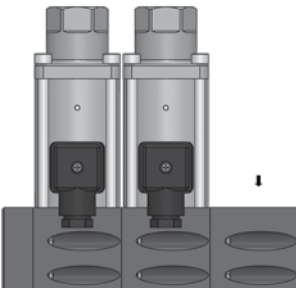


| DN | A  | B [mm] | C [mm] | D [mm] | E [mm] | F [mm] | H [mm] | G   | L [mm] | M [mm] | N [mm] | R [mm] | S [mm] |
|----|--|--------|--------|--------|--------|--------|--------|---|--------|--------|--------|--------|--------|
| 10 | G $\frac{1}{2}$ , G $\frac{3}{4}$ , G1                   | 20     | 42     | 52     | 18     | 49.5   | 167    | G $\frac{1}{4}$ , G $\frac{3}{8}$ , G $\frac{1}{2}$ | 8      | M6     | 50     | 13     | 25     |
| 15 | G $\frac{1}{2}$ , G $\frac{3}{4}$ , G1, G1 $\frac{1}{4}$ | 28     | 42     | 72     | 27     | 69.5   | 207    | G $\frac{3}{8}$ , G $\frac{1}{2}$ , G $\frac{3}{4}$ | 8      | M6     | 70     | 21     | 28     |
| 20 | G1, G1 $\frac{1}{4}$ , G1 $\frac{1}{2}$                  | 34     | 32     | 82     | 32     | 79.5   | 235    | G $\frac{1}{2}$ , G $\frac{3}{4}$ , G1              | 10     | M8     | 80     | 25     | 34     |
| 25 | G1, G1 $\frac{1}{4}$ , G1 $\frac{1}{2}$                  | 36     | 32     | 92     | 32     | 89.5   | 265    | G $\frac{3}{4}$ , G1, G1 $\frac{1}{4}$              | 10     | M8     | 90     | 20     | 50     |
| 32 | G1 $\frac{1}{4}$ , G1 $\frac{1}{2}$ , G2                 | 50     | 34     | 118    | 34     | 114.5  | 302    | G1, G1 $\frac{1}{4}$ , G1 $\frac{1}{2}$             | 10     | M8     | 115    | 34     | 50     |

## Accessories

|                          |   |   |
|--------------------------|---|---|
| <b>Joining rings</b>     | Blanking ring   |    |
|                          | Spacer ring   |    |
| <b>End caps</b>          | End cap, right  |    |
|                          | End cap, left   |    |
| <b>Connecting blocks</b> | Connecting block, right   |    |
|                          | Connecting block, left  |   |
|                          | Connecting block, right<br>Angled version G1 on top<br>DN10                         |  |
|                          | Connecting block, left<br>Angled version G1 on top<br>DN10                          |  |
| <b>Reducing adapter</b>  | Reducing adapter  |  |
| <b>Angle bracket</b>     |  |  |

## Examples of ordering codes

|   |  |  |
|---|--|--|
|    | <p>Basic valve</p>   | <p>CX03M-2/2-D/C-2/10/040/012/24V</p>              |
|    | <p>Connecting block, left</p>  | <p>CX03M-2/2-D/C-2/10/040/012/24V<br/>-WS-2XL</p>  |
|   | <p>Connecting block, right</p>                                       | <p>CX03M-2/2-D/C-2/10/040/012/24V<br/>-WS-2XR</p>  |
|  | <p>Connecting block, left 90°<br/>Angled version, outlet on top</p>  | <p>CX03M-2/2-D/C-2/10/040/012/24V<br/>-WS-2XLO</p> |
|  | <p>Connecting block, right 90°<br/>Angled version, outlet on top</p> | <p>CX03M-2/2-D/C-2/10/040/012/24V<br/>-WS-2XRO</p> |

### NOTE

The information in this brochure relates to the operating conditions and applications described.

For applications and operating conditions not described, please contact the relevant technical department.

Subject to technical modifications.

**HYDAC Accessories GmbH**  
Hirschbachstr. 2  
**66280 Sulzbach/Saar**  
Tel.: +49 (0)6897 - 509-01  
Fax: +49 (0)6897 - 509-1009  
Internet: [www.hydac.com](http://www.hydac.com)  
E-Mail: [info@hydac.com](mailto:info@hydac.com)

