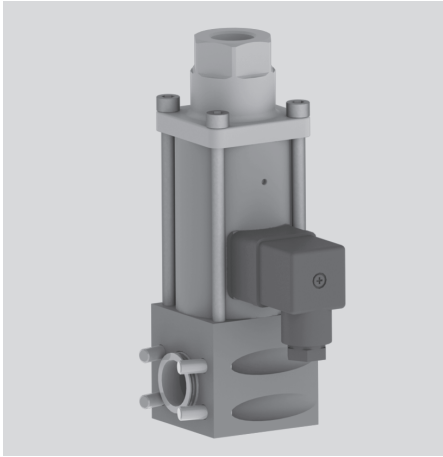
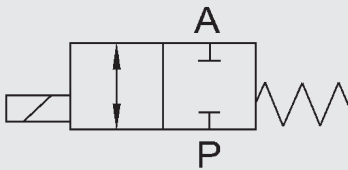


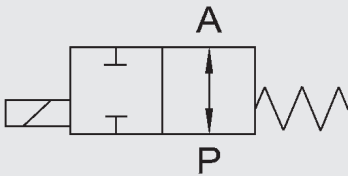
## 2/2-way coaxial valve CX02M to CX05M direct acting



### Switching function



NC (closed when de-energised)



NO (open when de-energised)

### Order data

- Nominal size
- Connection
- Function NC/NO
- Operating pressure
- Flow rate
- Medium
- Medium temperature
- Ambient temperature
- Supply voltage
- Number of module blocks

**!** If order details or application data are inaccurate or incomplete, there is a risk that the technical configuration of the valves may not be correct for the desired use. This may result in the physical and/or chemical characteristics of the materials or seals used not being adequate for the intended use.

### Model code (also example order)

**CX03M 2/2 D C 2 10 040 014 24V**

#### Designation

CX02M = modular series CX02M  
 CX03M = modular series CX03M  
 CX04M = modular series CX04M  
 CX05M = modular series CX05M

#### Ways

2/2 = number of ways

#### Control

D = direct

#### Switching function

C = NC - closed when de-energised  
 O = NO - open when de-energised\*

#### Body material

2 = brass (valve), aluminium (block)

#### Nominal size

10 = DN 10  
 15 = DN 15  
 20 = DN 20  
 25 = DN 25  
 32 = DN 32  
 40 = DN 40  
 50 = DN 50

#### Pressure range

020 = CX02 >0 - 20 bar  
 040 = CX03 >0 - 40 bar  
 064 = CX04 >0 - 64 bar  
 100 = CX05 >0 - 100 bar

#### Connection

014 = G $\frac{1}{4}$  - DN 10  
 038 = G $\frac{3}{8}$  - DN 10, DN 15  
 012 = G $\frac{1}{2}$  - DN 10, DN 15, DN 20  
 034 = G $\frac{3}{4}$  - DN 15, DN 20, DN 25  
 100 = G1 - DN 20, DN 25, DN 32  
 114 = G1 $\frac{1}{4}$  - DN 25, DN 32  
 112 = G1 $\frac{1}{2}$  - DN 32, DN40  
 200 = G2 - DN50

#### Connection diagram

24V = 24 V DC  
 230V = 230 V AC 40-60 Hz  
 Special voltage on request

\*optional


## Technical specifications


Control	Direct acting	
Nominal size	DN 10 to DN 50	
Pressure range (see table)	CX02M – 2/2	PN 0 to PN 20
	CX03M – 2/2	PN 0 to PN 40
	CX04M – 2/2	PN 0 to PN 64
	CX05M – 2/2	PN 0 to PN 100
Connections	Valve:	G ¼ - G 2
	Block:	G ½ - G 2½
Body material	Single valve:	Brass
	Block:	Aluminium
Valve seat (plastic on metal)	FKM	CX02M / CX03M / CX04M
	PTFE	CX05M
Material of seals	static:	FKM
	dynamic:	PTFE
Back-pressure resistant	up to 16 bar	
Vacuum	Leakage rate < 10 <sup>-6</sup> mbar•l/s *	
Media	Gaseous, liquid, contaminated	
Abrasive operating fluids	On request	
Direction of flow	P → A as marked	
	A → P max. 16 bar	
Temperature of medium	-10 °C to +100 °C	
Ambient temperature	-10 °C to +50 °C	
Mounting position	No orientation restrictions	
Limit switch	Inductive*	
Fixing	Mounting bracket*	

## Electrical part

Supply voltage	DC: 24 V
	AC: 230 V 40-60 Hz
Electrical part	DC: DC magnet
	AC: DC magnet + connector plug with integrated rectifier
Connection	Connector plug to DIN EN 175301-803 type A
	Connector plug to DIN EN 175301-803 type A with illuminated plug and varistor *
	Connector plug to DESINA M12x1 *
Voltage tolerance	±10 % to VDE 0580
Duty cycle	100 % duty cycle
Protection class	IP 65 when fitted with connector plug

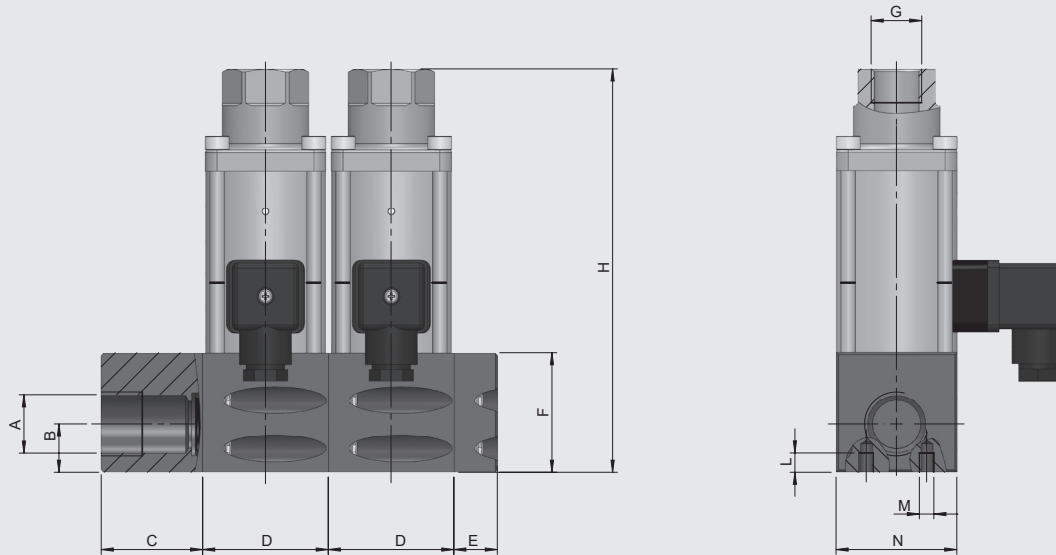
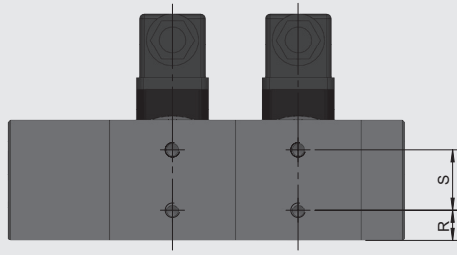
\*optional

 The material specification refers exclusively to the valve connection parts in contact with the medium.

 The valves are technically configured for specific media and applications. This may result in deviations from the general information given in the data sheet in terms of the design, sealing materials and specifications.





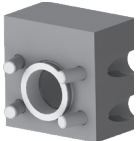
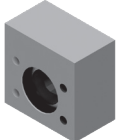
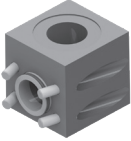
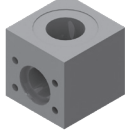
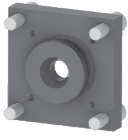
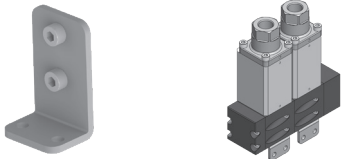
Series	DN [mm]	Pressure [bar]	Connection	Kv value [m³/h]	Power consumption [W]		Weight [kg]
					24V	230 V 50 Hz	
CX03M	10	0 - 20	G¼, G¾, G½	2.5	25	29	1.7
CX03M	10	0 - 40	G¼, G¾, G½	2.5	35	41	1.7
	15	0 - 40	G¾, G½, G¾	5.2	40	45	3.6
	20	0 - 40	G½, G¾, G1	7.0	45	53	5.4
	25	0 - 40	G¾, G1, G1¼	12.3	60	68	7.1
	32	0 - 40	G1, G1¼, G1½	20.0	73	76	12.6
	40	0 - 16	G1½	45.7	73	91	18.3
	50	0 - 16	G2	47.2	73	91	18.3
CX04M	10	0 - 64	G¼, G¾, G½	2.5	44	53	1.7
	15	0 - 64	G¾, G½, G¾	5.2	50	55	3.6
	20	0 - 64	G½, G¾, G1	7.0	53	59	5.4
	25	0 - 64	G¾, G1, G1¼	12.3	77	85	7.1
	32	0 - 64	G1, G1¼, G1½	20.0	73	76	12.6
CX05M	10	0 - 100	G¼, G¾, G½	2.5	44	53	1.7
	15	0 - 100	G¾, G½, G¾	5.2	50	55	3.6
	20	0 - 100	G½, G¾, G1	7.0	53	59	5.4
	25	0 - 100	G¾, G1, G1¼	12.3	77	85	7.1
	32	0 - 100	G1, G1¼, G1½	20.0	73	76	12.6

## Dimensions




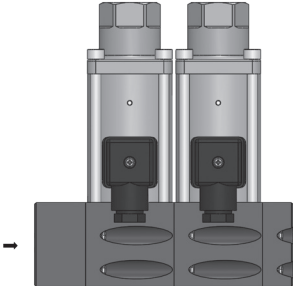
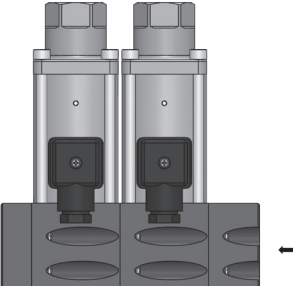
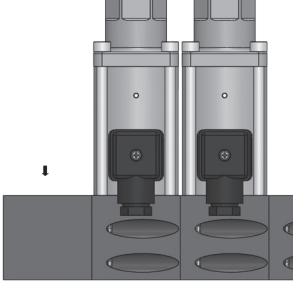
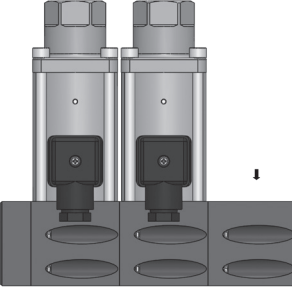
DN	A	B [mm]	C [mm]	D [mm]	E [mm]	F [mm]	H [mm]	G	L [mm]	M [mm]	N [mm]	R [mm]	S [mm]
10	G $\frac{1}{2}$ , G $\frac{3}{4}$ , G1	20	42	52	18	49.5	167	G $\frac{1}{4}$ , G $\frac{3}{8}$ , G $\frac{1}{2}$	8	M6	50	13	25
15	G $\frac{1}{2}$ , G $\frac{3}{4}$ , G1, G1 $\frac{1}{4}$	28	42	72	27	69.5	207	G $\frac{3}{8}$ , G $\frac{1}{2}$ , G $\frac{3}{4}$	8	M6	70	21	28
20	G1, G1 $\frac{1}{4}$ , G1 $\frac{1}{2}$	34	32	82	32	79.5	235	G $\frac{1}{2}$ , G $\frac{3}{4}$ , G1	10	M8	80	25	34
25	G1, G1 $\frac{1}{4}$ , G1 $\frac{1}{2}$	36	32	92	32	89.5	265	G $\frac{3}{4}$ , G1, G1 $\frac{1}{4}$	10	M8	90	20	50
32	G1 $\frac{1}{4}$ , G1 $\frac{1}{2}$ , G2	50	34	118	34	114.5	302	G1, G1 $\frac{1}{4}$ , G1 $\frac{1}{2}$	10	M8	115	34	50
40	G1 $\frac{1}{2}$ , G2, G2 $\frac{1}{2}$	58	40	132	40	129.5	339	G1 $\frac{1}{2}$	21	M12	130	30	70
50	G1 $\frac{1}{2}$ , G2, G2 $\frac{1}{2}$	58	40	132	40	129.5	339	G2	21	M12	130	30	70

## Accessories

<b>Joining parts</b>	Separating plate	
	Spacer	
<b>End caps</b>	End cap, right	
	End cap, left	
<b>Connecting blocks</b>	Connecting block, right	
	Connecting block, left	
	Connecting block, right angled version G1 on top DN10	
	Connecting block, left angled version G1 on top DN10	
<b>Reducing adapter</b>	Reducing adapter	
<b>Fixing</b>	Mounting bracket	

We would be happy to discuss your requirements for further options and accessories.

## Examples of ordering codes

	<p>Basic valve</p>	<p>CX03M-2/2-D/C-2/10/040/012/24V</p>
	<p>Connecting block, left</p>	<p>CX03M-2/2-D/C-2/10/040/012/24V -WS-2XL</p>
	<p>Connecting block, right</p>	<p>CX03M-2/2-D/C-2/10/040/012/24V -WS-2XR</p>
	<p>Connecting block, left 90° angled version, outlet on top</p>	<p>CX03M-2/2-D/C-2/10/040/012/24V -WS-2XLO</p>
	<p>Connecting block, right 90° angled version, outlet on top</p>	<p>CX03M-2/2-D/C-2/10/040/012/24V -WS-2XRO</p>

### NOTE

The information in this brochure relates to the operating conditions and applications described. For applications and operating conditions not described, please contact the relevant technical department.

The operator is always responsible for determining the product suitability for the specific application. Quantified values for product characteristics are average values for a new product that undergo a time deterioration process.

Subject to technical modifications and errors.

### HYDAC Accessories GmbH

Hirschbachstr. 2

**66280 Sulzbach/Saar**

Tel.: +49 (0)6897 - 509-01

Fax: +49 (0)6897 - 509-1009

Internet: [www.hydac.com](http://www.hydac.com)

E-Mail: [accessories@hydac.com](mailto:accessories@hydac.com)

