

2/2-way Coaxial Valve

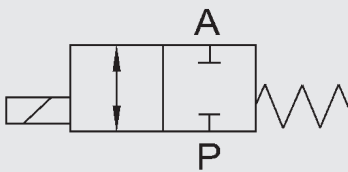
CXMEX Direct acting

Modular

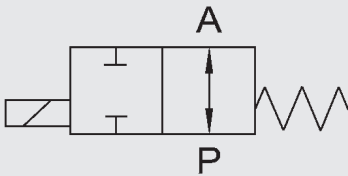
Model code
(also example order)

CXMEX 2/2 D C 2 10 020 012 24V 2XL

Switching function



NC (closed when de-energised)



NO (open when de-energised)

Designation

CXMEX = CXMEX series

Ways

2/2 = Number of ways

Control

D = Direct

Switching function

C = NC - closed when de-energised

O = NO - open when de-energised

Housing material

2 = Brass (valve)

4 = 1.4305* (valve), aluminium (block)

5 = 1.4571* (valve)

Valve sizes

10 = DN 10

15 = DN 15

Pressure range

020 = >0 - 20 bar

Connection

014 = G 1/4 DN10

038 = G 3/8 DN10, DN15

012 = G 1/2 DN10, DN15

034 = G 3/4 DN15

Supply voltage

24 V = 24 V DC

230 V = 230 V AC 40 - 60 Hz

Number of module blocks

2XL = Double block with G3/4 connecting block, left, and end cap, right

Ordering data

- Nominal size
- Connection
- NC / NO function
- Operating pressure
- Flow capacity
- Media
- Temperature of medium
- Ambient temperature
- Supply voltage
- Number of module blocks

*optional

Technical data

Control	2/2-way valve, direct acting		
Nominal size	DN 10, DN 15		
Pressure range (see table)	CXMEX - 2/2 DN 10	PN 0 to PN 20	
	CXMEX - 2/2 DN 15	PN 0 to PN 20	
Connections (see table)	Valve:	G1/4 - G3/4	
	Block:	G1/2 - G11/2	
Housing material	Single valve:	Brass, 1.4305*, 1.4571*	
	Block:	Aluminium	
Seal material	Static:	FKM	
	Dynamic:	PTFE	
	Seat seal:	FKM	
Back-pressure resistant	up to 16 bar		
Media	Gaseous, liquid, contaminated		
Flow direction	P → A	max. 20 bar	
	A → P	max. 16 bar	
Temperature of medium	-20 °C to +40 °C		
Ambient temperature	-30 °C to +40 °C		
Installation position	In any position		

Electrical part

Supply voltage	DC: 24 V	
	AC: 230 V 50 Hz	
Electrical part	DC: DC solenoid	
	AC: DC solenoid with integrated rectifier	
Connection	Cable gland M16 x 1.5	
Voltage tolerance	+ / - 10% to VDE 0580	
Duty cycle	100%	
Explosion protection	II 2G Ex em II T4 II 2 D td A21 IP65 T130°C	

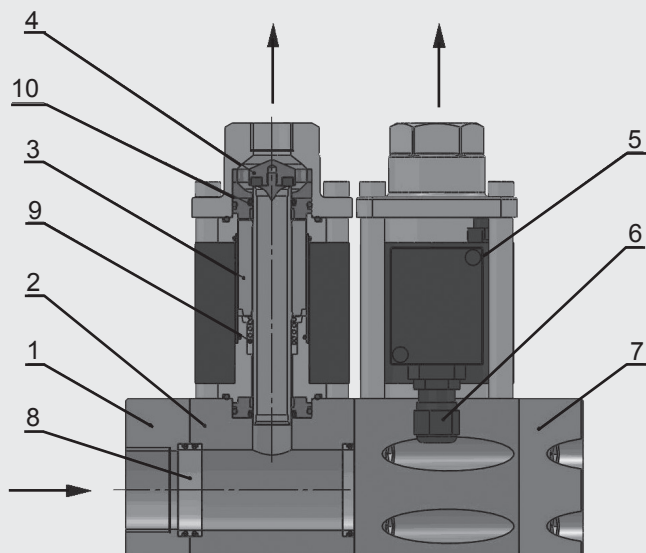
We would be happy to discuss your requirements for further options and accessories.

*optional

Series	DN [mm]	Pressure [bar]	Connection (Valve)	Kv value [m³/h] DIN 60354	Power consumption [W]		Weight [kg]
					24 V DC	230 V 50 Hz	
CXMEX	10	0 - 20	G1/4, G3/8, G1/2	2.5	23	23	2.3
	15	0 - 20*	G3/8, G1/2, G3/4	5.2	30	30	4.3

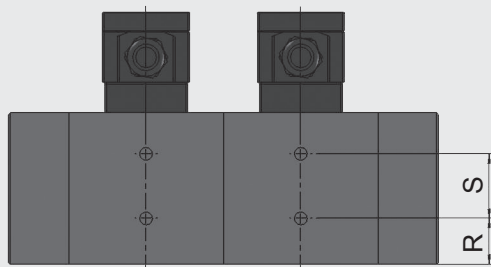
*Higher pressures on request

Sectional drawing

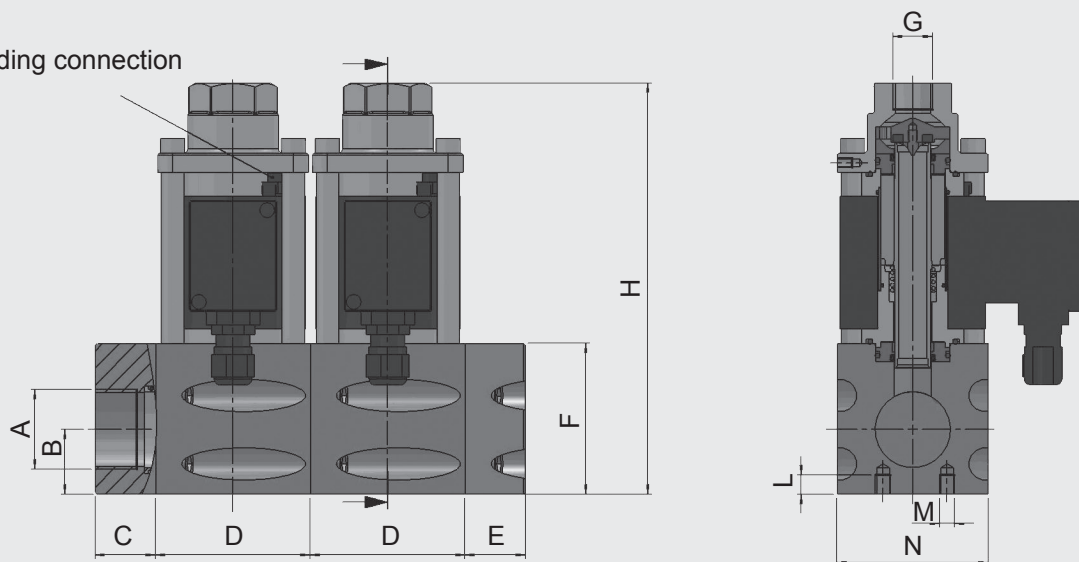


Item	Designation	Qty.
1	Connecting block, left	1
2	Block module	2
3	Solenoid armature	2
4	Valve seat	2
5	Solenoid	2
6	Cable gland	2
7	End cap	1
8	Spacer ring	3
9	Spring	2
10	PTFE rod seal	4

Dimensions

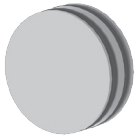

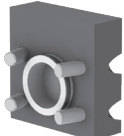

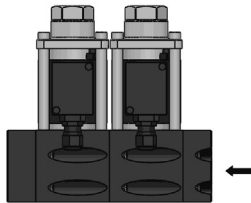
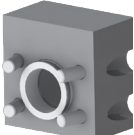
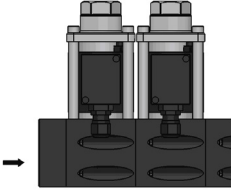
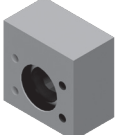
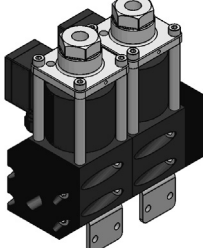



Grounding connection



DN	A	B	C	D	E	F	H	G	L	M	N	R	S
		[mm]	[mm]	[mm]	[mm]	[mm]	[mm]		[mm]		[mm]	[mm]	[mm]
10	G1/2, G3/4, G1, G11/4	28	42	67	27	69.5	187	1/4, 3/8, 1/2	8	M6	70	21	28
15	G1, G11/4, G11/2	34	32	82	32	79.5	216.5	3/8, 1/2, 3/4	10	M8	80	25	34

Accessories

Joining pieces	Blanking plate		
	Spacer ring		
End caps	End cap, right		
	End cap, left		
Connecting blocks	Connecting block, right		
	Connecting block, left		
Mounting bracket	Mechanical option = HW		

We would be happy to discuss your requirements for further options and accessories

NOTE

The information in this brochure relates to the operating conditions and applications described.

For applications or operating conditions not described, please contact the relevant technical department.

Subject to technical modifications.

HYDAC Accessories GmbH

Hirschbachstr. 2

66280 Sulzbach/Saar

Tel.: +49 (0)6897 - 509-01

Fax: +49 (0)6897 - 509-1009

Internet: www.hydac.com

E-Mail: info@hydac.com