



## Low Viscosity Unit Coalescer Diesel LVU-CD-10

### Description

The Low Viscosity Unit LVU is intended for offline filtration. The LVU removes solid particle contamination and free water from diesel fuel.

Diesel fuel is often subject to long storage periods, especially in tanks which may be used infrequently. As a result, solid particles and water are often deposited on the bottom of the tank and can then damage pumps and sensitive components when the engine is switched on.

In addition, over an extended period of time free water in a tank provides a breeding ground for diesel fuel pests (microorganisms such as bacteria, algae and fungus). Deposits and pests can both quickly lead to blockage of the machine filter and to damage to diesel injection system components. The consequence: impermissibly high levels of dangerous emissions from the combustion engine. This leads to high costs for downtime, spare parts, maintenance and repairs.

Using the Low Viscosity Unit LVU minimises contamination to a system and prevents expensive system downtime. It also eliminates the need for early and expensive disposal of diesel fuel.

### Fields of Application

- Mobile & stationary emergency generators e.g. in hospitals, shopping centres, power plants
- Tanks on mobile machines e.g. harvesting and construction machinery
- Storage tanks e.g. in agriculture, construction, mining
- Yachts and leisure boats

### Advantages

- Increased system availability
- Reduced risk of diesel pests thanks to separation of free water from diesel fuel
- Care and dewatering possible even when the combustion engine is turned off
- Can be used flexibly thanks to adjustable transfer pumping function (continuous or time-programmed)
- Optional automatic drainage of water from the coalescing housing for increased convenience and greater process reliability

### Technical data

Dewatering performance	Eco	Standard	Premium
Water separation efficiency	>95% acc. to ISO CD 16332		
Achievable water content	<200 ppm free water		
Dewatering rate	12 l/h at 5% water in the diesel		
Hydraulic specifications			
Nominal flow	10 l/min		
Permitted fluids	Diesel, biodiesel B0 to B100, fuel oil		
Limit of application	Maximum 10% free water		
Permitted fluid temperature range	5 to 50 °C*		
Operating pressure	Maximum 3 bar		
Permissible pressure at suction port	-0.4 to 0.2 bar		
Permissible pressure at pressure port	3 bar		
Permissible pressure at water drain	0 bar		
Connection (suction and pressure side)	M26x1.5 (18 L) external thread		
Water drain	Drain plug	Ø 10 mm hose	Ø 10 mm hose
Water collection canister	–	5 litres	5 litres
Electrical data			
Power consumption	370 W		
Connection cable	5 m	0.5 m	0.5 m
Protection class	IP44	IP54	IP54
General data			
Dimensions	see dimensions		
Weight when empty	≈ 20 kg	≈ 38 kg	≈ 38 kg
Permitted ambient temperature range	5 to 40 °C*	5 to 50 °C*	5 to 50 °C*

\* or at least 10 °C below the flash point of the fluid used/deployed.

### Preferred models (with shorter delivery times)

Model code	Part no.:
LVU-CD-10-WM-1E-E-1	4024213
LVU-CD-10-GM-2S-E-1	3884573
LVU-CD-10-GM-2P-F-1	3992032

## Model code

LVU-CD-10-GM-2P-E-1/-

### Type

LVU = LowViscosity Unit

### Function

C = filtering and coalescing

### Operating fluid

D = diesel

### Nominal flow rate

10 = 10 l/min

### Pump version

G = gear pump (only for control type S and P)

W = centrifugal pump (only for control type E)

### Supply voltage

AE = 110 V AC, 60 Hz, 1 Ph

E = 220 V AC, 50 Hz, 1 Ph (not for control type Eco)

M = 230 V AC, 50 Hz, 1 Ph

F = 240 V AC, 50 Hz, 1 Ph

N = 400 V AC, 50 Hz, 3 Ph

R = 415 V AC, 50 Hz, 3 Ph

W = 230 V AC, 50 Hz, 3 Ph

AB = 690 V AC, 50 Hz, 3 Ph

AI = 240 V AC, 50 Hz, 3 Ph

X = on request

### Water drain

1 = manual (for control type E only)

2 = automatic (for control type S and P only)

### Control type

E = Eco (see control type table)

S = Standard (see control type table)

P = Premium (see control type table)

### Clogging indicator

E = clogging indicator, visual

F = negative pressure switch, electrical (only for control type P)

### Type code

1 = (you always receive the latest type)

## Scope of delivery

- LVU-CD-10, ready for connection (without hoses and filter element)
- Operating and maintenance instructions

## Accessories

- Hose with lance (NBR), part no.: 3029032
- Hose with lance (PVC), part no.: 37607

## Filter elements

### LVU-CD-10-...E = Eco

Designation	Part no.
5 µm N7ON-DC005-CA62H	3891597
10 µm N7ON-DC010- CA62H	3891598
30 µm N7ON-DC030- CA62H	3891599

## Filter elements

### LVU-CD-10-...S = Standard/ LVU-CD-10-...P = Premium

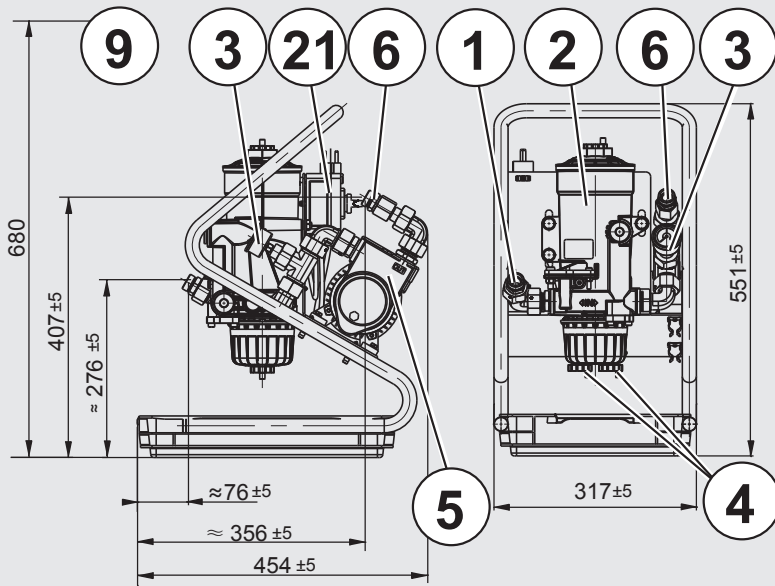
Designation	Part no.
5 µm N7ON-DC005-CA61H	3871268
10 µm N7ON-DC010- CA61H	3871269
30 µm N7ON-DC030- CA61H	3871271

## Control type

Choose between the following control types:

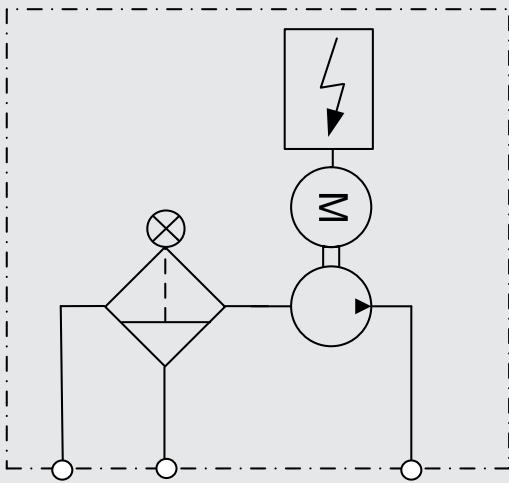
	Eco	Standard	Premium
Water drain	Manual	Automatic	Automatic
Clogging indicator	Visual	Visual	Electrical
Float switch in the collecting pan	X	✓	✓
Remote control input on / off	X	✓	✓
Outlet "unit OK"	X	✓	✓
Outlet "unit active"	X	✓	✓
Time programming	X	X	✓
Informed when "diesel dry"	X	X	✓

## Dimensions (ECO)



All dimensions in mm

## Hydraulic diagram (ECO)

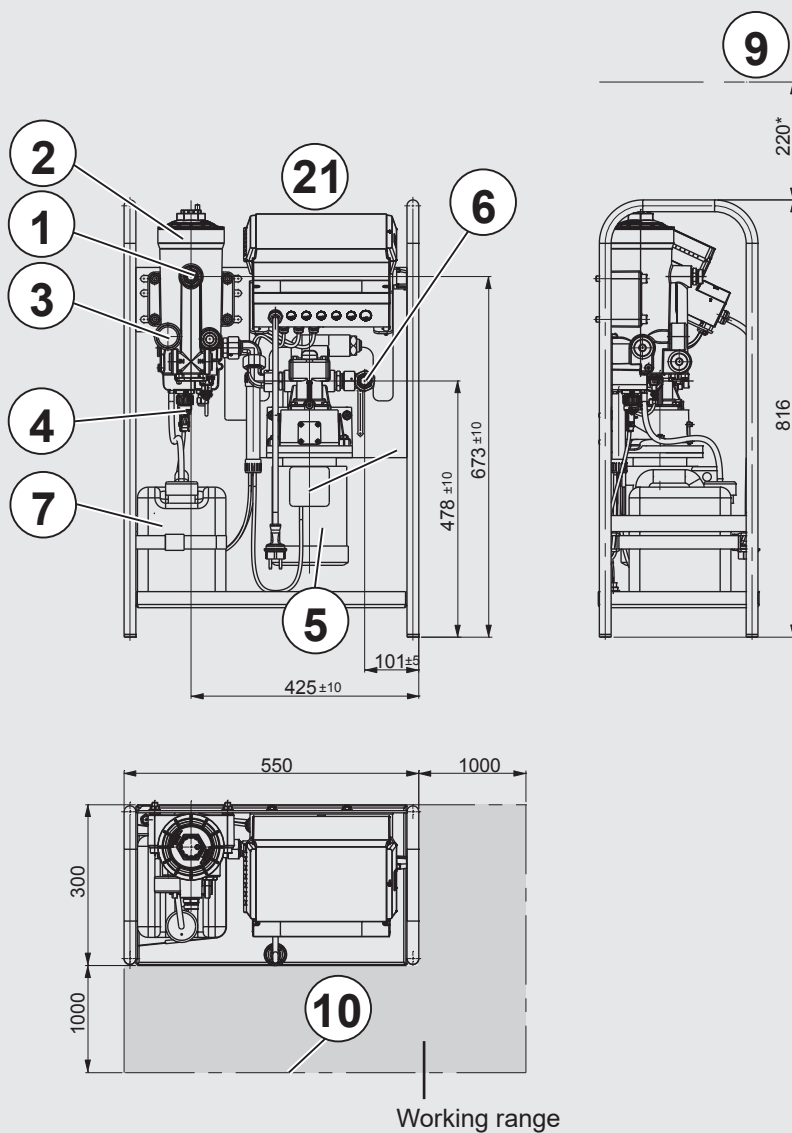


INLET FUEL ISO 8434, L18 manual drain ISO 8434, L18  
M26 x 1.5 screw M26 x 1.5

## Legend

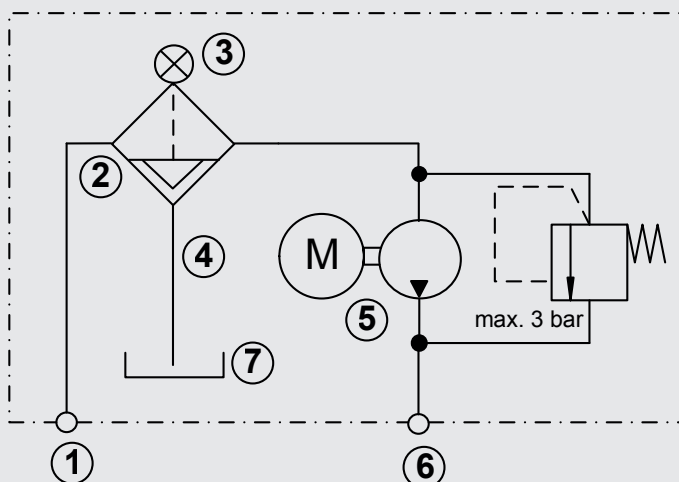
Item	Designation
1	Inlet (ISO8434, L18, M26x1.5)
2	Filter and coalescing housing
3	Clogging indicator
4	Water drain
5	Motor pump unit
6	Outlet (ISO8434, L18, M26x1.5)
9	Element removal height
21	On/Off switch

## Dimensions (Standard/Premium)



All dimensions in mm

## Hydraulic diagram (Standard/Premium)



## Legend

Item	Designation
1	Inlet (ISO8434, L18, M26x1.5)
2	Filter and coalescing housing
3	Clogging indicator
4	Water drain
5	Motor pump unit
6	Outlet (ISO8434, L18, M26x1.5)
7	Water supply tank
9	Element removal height
10	Recommended working area for operating and service staff
21	Electrical control

## NOTE

The information in this brochure relates to the operating conditions and applications described. For applications and operating conditions not described, please contact the relevant technical department. Subject to technical modifications.

**HYDAC FILTER SYSTEMS GMBH**  
 Industriegebiet  
**D-66280 Sulzbach / Saar**  
 Tel.: +49 (0) 6897/509-01  
 Fax: +49 (0) 6897/509-9046  
 Internet: [www.hydac.com](http://www.hydac.com)  
 e-mail: [filtersystems@hydac.com](mailto:filtersystems@hydac.com)