



## Swivel bolt clamps

Swivel bolt clamping band

Quick release swivel bolt band clamps

Swivel bolt prism clamp

Clamps for cylinders

### General

HY-ROS swivel bolt clamps are used to mount large-volume containers or components of various shapes (round and/or square) and materials such as air container, plastic containers, steel and plastic tanks or accumulators.

Various production and shaping methods together with different base materials and dimensions cater to virtually every requirement.

### Advantages

- Simple installation through fold-open locking system (similar T-bolt)
- Simple installation and subsequent correction of position
- Unrestricted positioning of fastening system
- Flexibility thanks to individual shaping of the clamping bands
- Insulation from noise and electrostatic thanks to additional plastic or rubber inserts
- Suitable supports for every container through selection of shaped parts and plastics
- Customer-specific and inexpensive solutions through modification of clamping bands and supports

### Notice

Mounting technology, in particular swivel bolt clamps, has health & safety implications. Therefore our mounting equipment must only be fitted and installed by trained personnel.

We will only guarantee and accept liability for our products as such, but not their installation or their suitability for individual ambient conditions.

### Swivel bolt clamping band

The flexible steel band, used in conjunction with a large selection of mounting systems optimised to suit requirements, is the basis element of all HY-ROS swivel bolt clamps and it can be used with or without a support.

For the band-eyelet connection with mechanical attachment, the band ends are bent to form eyelets and closed up with projection welding connections or by joining processes.

The eyelet straps are fastened to the outside of the bent band so that the band has a smooth inner surface.

Adapted profile inserts made from PE or EPDM are used to protect surface and component, while resistance to flame and high temperatures is achieved by PTFE plastic inserts.

Suitable supports for air reservoir mounting are available for practically all requirements.

### Swivel bolt clamping band, round, with quick release fastener

The bent swivel bolt clamping band is particularly suitable for mounting heavy, smooth-walled hoses with a high tightening torque.

The fold-open locking system enables rapid radial mounting.

Fitted with strap or rubber profile inlay to prevent injuries and component damage.

### Quick release swivel bolt band clamps

To mount round components on a base surface, the swivel bolt clamping band is combined with a support. The support has two elongated holes for effortless clamp adjustment.

The quick release swivel bolt band clamp "Multi" has been specifically designed for high dynamic loads, thermal stresses, changes in diameter and strong force effects.

The component geometry also enables freely selectable positioning of the fastening system.

The support is reinforced with web plates or side walls for greater load capacity.

### Swivel bolt prism clamp

The combination of swivel bolt clamping band and functionally formed support has been developed for mounting accumulators in confined spaces.

### Clamps for cylinders

The combination of swivel bolt prism clamp and standard DIN 3015 clamp is predominantly used to mount hydraulic lines to the cylinder. This prevents weld metal and heat from entering the hydraulic cylinder.

## Maximum static loads, HY-ROS clamping bands (welded stainless steel)

Width x thickness [mm]	Material	Designation	Yield strength $R_{p0.2}$ material [N/mm <sup>2</sup> ]	Yield strength $R_{p0.2}$ clamping band [kN]	Max. permitted load [kN]	Minimum length [mm]
25 x 1.0	1.4510	Stainless steel, ferritic	220	5.5	4.5	100
25 x 1.0	1.4301	Stainless steel, austenitic	210	5.25	4.5	100
30 x 1.0	1.4510	Stainless steel, ferritic	220	6.6	5.5	120
30 x 1.0	1.4301	Stainless steel, austenitic	210	6.3	5.5	120
30 x 1.0	1.4571	Stainless steel, austenitic	220	6.6	5.5	120
30 x 1.5	1.4510	Stainless steel, ferritic	220	9.9	8.3	120
30 x 1.5	1.4301	Stainless steel, austenitic	210	9.45	8	120
30 x 1.5	1.4571	Stainless steel, austenitic	220	9.9	8	120
40 x 1.5	1.4510	Stainless steel, ferritic	220	13.2	11	120
40 x 1.5	1.4301	Stainless steel, austenitic	210	12.6	10.6	120

## Maximum static loads, HY-ROS clamping bands (joined)

Width x thickness [mm]	Material	Designation	Yield strength $R_{p0.2}$ material [N/mm <sup>2</sup> ]	Yield strength $R_{p0.2}$ clamping band [kN]	Max. permitted load [kN]	Surface treatment	Minimum length [mm]
30 x 1.5	1.0976	Fe steel / S355MC	355	15.98	8.3	Z800 (800g/m <sup>2</sup> )	140
40 x 1.5	1.0976	Fe steel / S355MC	355	21.30	11	Z800 (800g/m <sup>2</sup> )	150

### NOTE

The information in this brochure relates to the operating conditions and applications described. For applications or operating conditions not described please contact the relevant technical department.

Users bear the responsibility in all cases for determining the product's suitability in the specific application. Figures given for product characteristics are average values for a new product which are subject to an ageing process. Subject to technical modifications and errors.

**HYDAC Accessories GmbH**  
Hirschbachstr. 2  
**66280 Sulzbach/Saar**  
Tel.: +49 (0)6897 - 509-01  
Fax: +49 (0)6897 - 509-1009  
Internet: [www.hydac.com](http://www.hydac.com)  
E-mail: [info@hydac.com](mailto:info@hydac.com)



## Swivel bolt clamping band Stretched form

HR(S)GBL...

### Delivery state:

stretched out

### Band width:

20–40 mm

### Diameter range:

39–619 mm

### Model code

(also order example)

HRGBLP 25 A1 169 F1ZN

#### Series

HRGBLP	=	HY-ROS swivel bolt clamping band, light series, welded
HRGBLF	=	HY-ROS swivel bolt clamping band, light series, joined
HRGBLPU	=	HY-ROS swivel bolt clamping band, light series, welded, with rubber profile
HRGBLFU	=	HY-ROS swivel bolt clamping band, light series, joined, with rubber profile
HRSGBLP	=	HY-ROS swivel bolt clamping band, heavy series, welded
HRSGBLF	=	HY-ROS swivel bolt clamping band, heavy series, joined
HRSGBLPU	=	HY-ROS swivel bolt clamping band, heavy series, welded, with rubber profile
HRSGBLFU	=	HY-ROS swivel bolt clamping band, heavy series, joined, with rubber profile

#### Band width

HRGBLP, HRGBLPU

20	=	20 x 0.8 mm (on request)
25	=	25 x 1 mm
30	=	30 x 1 mm

HRSGBLP, HRSGBLPU

30	=	30 x 1.5 mm
40	=	40 x 1.5 mm

HRGBLF, HRGBLFU

30	=	30 x 1 mm
----	---	-----------

HRSGBLF, HRSGBLFU

30	=	30 x 1.5 mm
40	=	40 x 1.5 mm

#### Version

A1	=	with hex head bolt
B1	=	with hex socket bolt
S1	=	with quick release fastener
Others	on request	

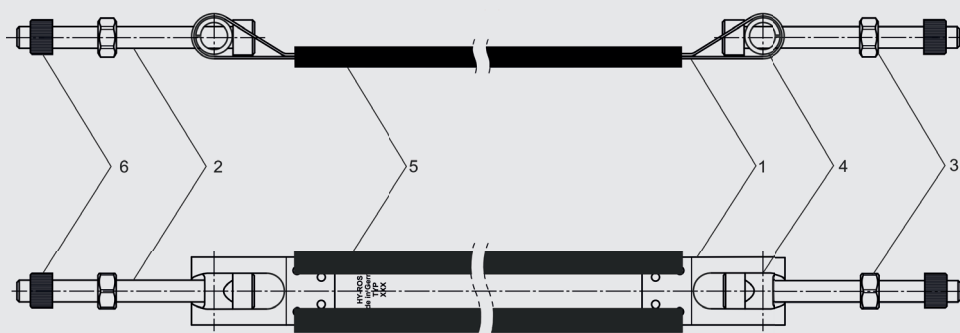
#### Type

(According to dimensions)

#### Material of steel parts

F1ZN	=	clamping band F1, closing parts steel, zinc-plated
A2	=	clamping band A2, closing parts A2
A4	=	clamping band A4, closing parts A4 (on request)
M06	=	clamping band hot-dip galvanised, closing parts steel, zinc-plated
Others	on request	

## Technical data



Item	Designation
1	Clamping band
2	Bolt
3	Nut
4	Swivel sleeve, swivel bolt
5	Rubber profile
6	Cap

### Band and bolt dimensions

Band size [mm]	Bolt size
20 x 0.8	M6 x 50
25 x 1.0	M8 x 80
30 x 1.0	M10 x 90
30 x 1.5	M10 x 90
40 x 1.5	M10 x 90

### Welding certifications

Internally manufactured clamping bands of size 20x0.8; 25x1.0, 30x1.0, 30x1.5 and 40x1.5 in accordance with DIN EN 15085 welding certificate

Certificate level	CL1
Weld performance class	CP-C3
Test class	CT4
Surface finish	Level 3

### Materials

Clamping band	Steel, stainless (1.4510), others on request		
Bolt, nut	Steel, zinc-plated		
Swivel sleeve, swivel bolt	Steel, zinc-plated		
Rubber profile	EPDM	Temperature resistance	-35 °C to +120 °C
	NBR	Temperature resistance	-40 °C to +85 °C

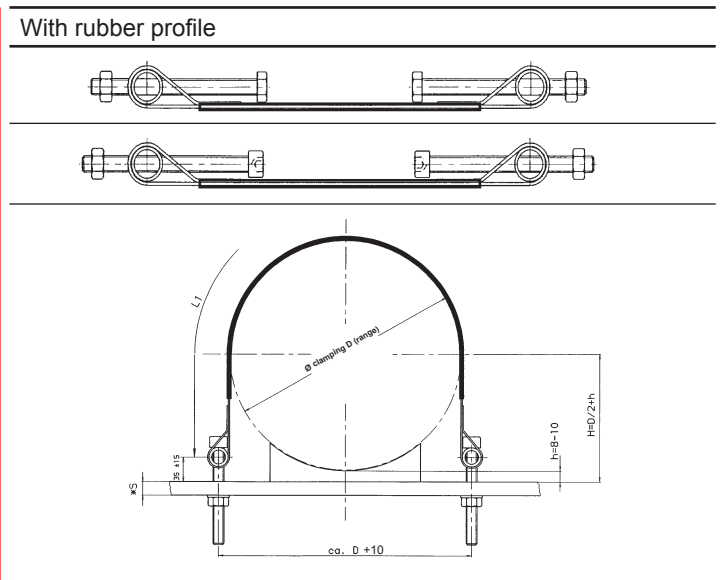
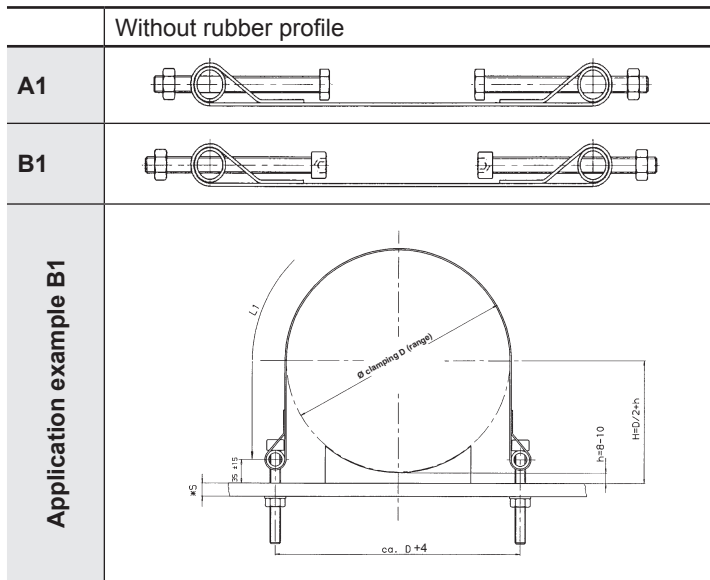
### Load values

Band size [mm]	Max. tensile load [N]	Tightening torque [Nm]
20 x 0.8	2900	8
25 x 1.0	4500	13
30 x 1.0	5500	15
30 x 1.5	8300	23
40 x 1.5	11000	28

### Delivery state

Clamping band	Stretched out Customised shapes on request
---------------	---

# Dimensions of swivel bolt clamping band, version A1 and B1



**Band and bolt size**  
25 x 1 mm, M8 x 80

Type	Dimensions [mm]	
	D (range)	L1
62	78 - 84	181
64	80 - 86	187
70	87 - 93	206
76	94 - 101	224
82	101 - 109	242
88	108 - 121	260
94	115 - 128	279
100	122 - 139	297
106	130 - 148	316
115	140 - 159	343
120	146 - 164	358
124	151 - 169	371
133	162 - 180	399
142	173 - 191	427
151	184 - 202	455
160	195 - 213	483
169	206 - 224	511
178	217 - 235	539
187	228 - 246	567
196	239 - 257	595
205	250 - 268	623
214	261 - 279	651
223	272 - 290	679
231	281 - 299	704
234	284 - 302	713
241	293 - 311	735
250	304 - 322	764
259	315 - 333	792
268	326 - 344	820
277	337 - 355	849
286	348 - 366	877
295	359 - 377	905
300	366 - 384	921

**Band and bolt size**  
30 x 1 mm, M10 x 90  
30 x 1.5 mm, M10 x 90  
40 x 1.5 mm, M10 x 90

Type	Dimensions [mm]	
	D (range)	L1
80	99 - 109	232
89	110 - 119	260
98	120 - 130	287
107	131 - 141	315
116	142 - 153	342
125	153 - 171	370
134	164 - 186	398
143	175 - 197	426
152	186 - 208	454
165	201 - 224	494
178	216 - 239	534
191	232 - 255	575
204	248 - 271	615
217	264 - 287	656
230	279 - 302	696
243	295 - 318	737
256	311 - 334	777
269	327 - 350	818
282	342 - 365	859
295	358 - 381	900
300	366 - 389	916
308	374 - 397	941
321	390 - 413	981
334	406 - 429	1022
347	422 - 445	1063
360	437 - 460	1103
373	453 - 476	1144
386	469 - 492	1185
399	485 - 508	1225
412	501 - 524	1266
425	516 - 540	1307
438	532 - 556	1348
451	548 - 571	1388
464	564 - 587	1429
477	580 - 603	1470
490	596 - 619	1511

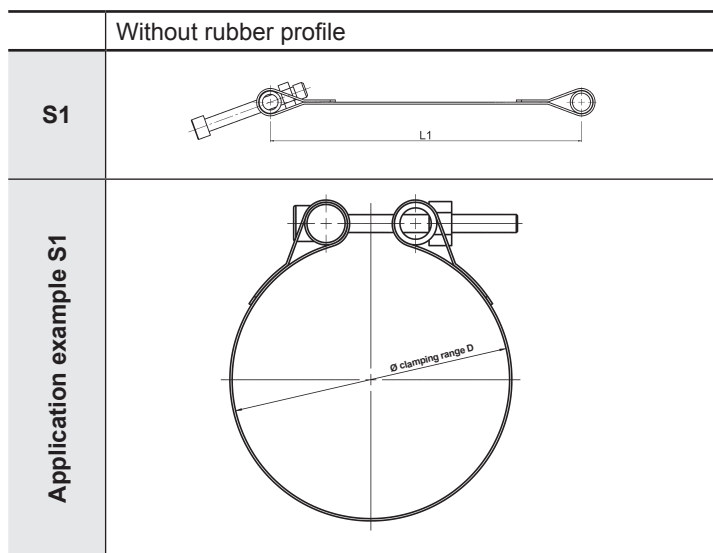
**Band and bolt size**  
25 x 1 mm, M8 x 80

Type	Dimensions [mm]	
	D (range)	L1
64	77 - 83	187
70	84 - 90	206
76	91 - 98	224
82	98 - 106	242
88	105 - 118	260
94	112 - 125	279
100	119 - 136	297
106	127 - 145	316
115	137 - 156	343
120	143 - 161	358
124	148 - 166	371
133	159 - 177	399
142	170 - 188	427
151	181 - 199	455
160	192 - 210	483
169	203 - 221	511
178	214 - 232	539
187	225 - 243	567
196	236 - 254	595
205	247 - 265	623
214	258 - 276	651
223	269 - 287	679
231	278 - 296	704
234	281 - 299	713
241	290 - 308	735
250	301 - 319	764
259	312 - 330	792
268	323 - 341	820
277	334 - 352	849
286	345 - 363	877
295	356 - 374	905
300	363 - 382	921

**Band and bolt size**  
30 x 1 mm, M10 x 90  
30 x 1.5 mm, M10 x 90  
40 x 1.5 mm, M10 x 90

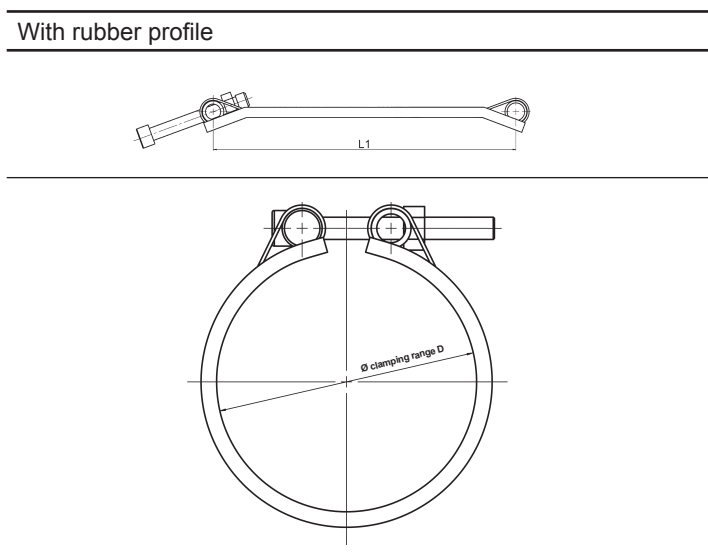
Type	Dimensions [mm]	
	D (range)	L1
80	96 - 106	232
89	107 - 116	260
98	117 - 127	287
107	128 - 138	315
116	139 - 150	342
125	150 - 168	370
134	161 - 183	398
143	172 - 194	426
152	183 - 205	454
165	198 - 221	494
178	213 - 236	534
191	229 - 252	575
204	245 - 268	615
217	261 - 284	656
230	276 - 299	696
243	292 - 315	737
256	308 - 331	777
269	324 - 347	818
282	339 - 362	859
295	355 - 378	900
300	363 - 386	916
308	371 - 394	941
321	387 - 410	981
334	403 - 423	1022
347	419 - 442	1063
360	434 - 457	1103
373	450 - 473	1144
386	466 - 489	1185
399	482 - 505	1225
412	496 - 521	1266
425	513 - 537	1307
438	529 - 553	1348
451	545 - 568	1388
464	561 - 584	1429
477	577 - 600	1470
490	593 - 616	1511

# Dimensions of swivel bolt clamping band, version S1



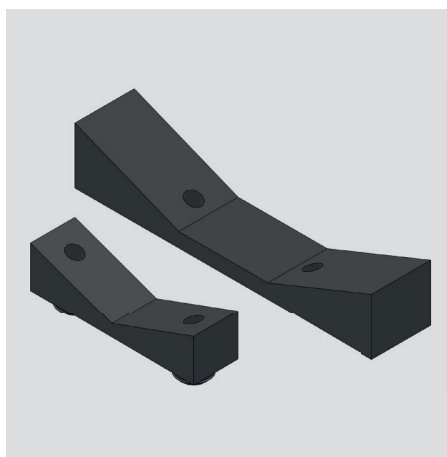
**Band and bolt size**  
 30 x 1 mm, M10 x 90  
 30 x 1.5 mm, M10 x 90  
 40 x 1.5 mm, M10 x 90  
 20 x 0.8 mm, M6 x 50 (on request)  
 25 x 1 mm, M8 x 80 (on request)

Type	Dimensions [mm]		
	D (range)		L1
80	77	- 82	232
89	86	- 91	260
98	95	- 100	287
107	104	- 112	315
116	113	- 121	342
125	122	- 130	370
134	131	- 139	398
143	140	- 148	426
152	149	- 157	454
165	162	- 170	494
178	175	- 183	534
191	188	- 196	575
204	201	- 209	615
217	214	- 222	656
230	227	- 235	696
243	240	- 251	737
256	253	- 264	777
269	266	- 277	818
282	279	- 290	859
295	292	- 303	900
300	297	- 308	916
308	305	- 316	941
321	318	- 329	981
334	331	- 342	1022
347	344	- 355	1063
360	357	- 368	1103
373	370	- 381	1144
386	383	- 394	1185
399	396	- 407	1225
412	409	- 420	1266
425	422	- 433	1307
438	435	- 445	1348
451	448	- 459	1388
464	461	- 472	1429
477	474	- 485	1470
490	487	- 498	1511
503	500	- 511	1552



**Band and bolt size**  
 30 x 1 mm, M10 x 90  
 30 x 1.5 mm, M10 x 90  
 40 x 1.5 mm, M10 x 90  
 20 x 0.8 mm, M6 x 50 (on request)  
 25 x 1 mm, M8 x 80 (on request)

Type	Dimensions [mm]		
	D (range)		L1
80	71	- 76	232
89	80	- 85	260
98	89	- 94	287
107	98	- 103	315
116	107	- 115	342
125	116	- 124	370
134	125	- 133	398
143	134	- 142	426
152	143	- 151	454
165	156	- 164	494
178	169	- 177	534
191	182	- 190	575
204	195	- 203	615
217	208	- 216	656
230	221	- 229	696
243	234	- 245	737
256	247	- 258	777
269	260	- 271	818
282	273	- 284	859
295	286	- 297	900
300	291	- 302	916
308	299	- 310	941
321	312	- 323	981
334	325	- 336	1022
347	338	- 349	1063
360	351	- 362	1103
373	364	- 375	1144
386	377	- 388	1185
399	390	- 401	1225
412	403	- 414	1266
425	416	- 427	1307
438	429	- 440	1348
451	442	- 453	1388
464	455	- 466	1429
477	468	- 479	1470
490	481	- 492	1511
503	494	- 505	1552



## Support short, for mounting air reservoirs HRLBB BUK

Support short (BUK) for mounting of air reservoir in conjunction with HY-ROS swivel bolt clamping band version A1 and B1

### Model code (also order example)

#### Series

HRLBB = HY-ROS air reservoir mount

#### Designation

BUK = support short, for air reservoir

#### Diameter range

(according to dimensions)

#### Material

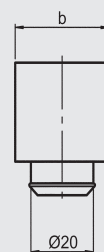
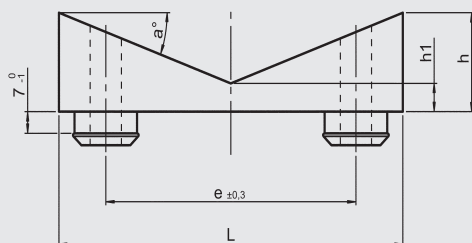
PP = polypropylene

PA = polyamide

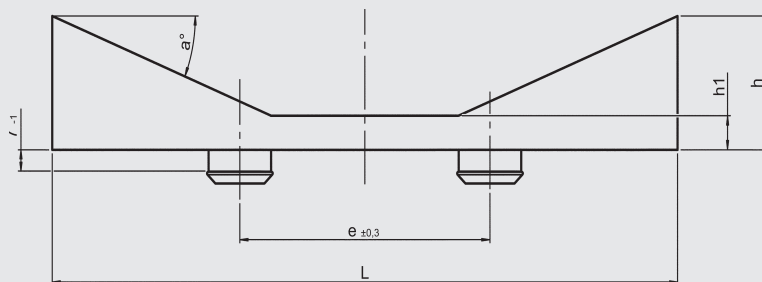
HRLBB BUK 240-350 PA

## Dimensions

### Support short for clamping range D = 125 to 240 mm



### Support short for clamping range D = 240 to 500 mm



Clamping diameter (range) D [mm]	Dimensions						Weight [g/piece]	
	b [mm]	L [mm]	h [mm]	e [mm]	h1 [mm]	α	PP	PA
125–240	30	110	28	80	8	20°	49	63
240–350	30	110	17.6	80	8	14°	32	43
350–420	40	200	38	80	10	22°	82	106
420–500	40	200	32	80	10	17.5°	65	83

## NOTE

The information in this brochure relates to the operating conditions and applications described. For applications or operating conditions not described please contact the relevant technical department.

Users bear the responsibility in all cases for determining the product's suitability in the specific application. Figures given for product characteristics are average values for a new product which are subject to an ageing process. Subject to technical modifications and errors.

**HYDAC Accessories GmbH**  
Hirschbachstr. 2  
**66280 Sulzbach/Saar**  
Tel.: +49 (0)6897 - 509-01  
Fax: +49 (0)6897 - 509-1009  
Internet: [www.hydac.com](http://www.hydac.com)  
E-mail: [info@hydac.com](mailto:info@hydac.com)



## Swivel bolt clamping band Round shape with quick release fastener

HRGB...S1...

### Delivery state:

bent

### Band width:

25 mm

### Diameter range:

54–301 mm

### Model code

(also order example)

HRGBP 25 S1 203-211 / 205 F1ZN

#### Designation

HRGBP	=	HY-ROS swivel bolt clamping band, welded
HRGBF	=	HY-ROS swivel bolt clamping band, joined
HRGBPM	=	HY-ROS swivel bolt clamping band, welded, with strap
HRGBPU	=	HY-ROS swivel bolt clamping band, welded, with rubber profile
HRGBFU	=	HY-ROS swivel bolt clamping band, joined, with rubber profile

#### Band width

25	=	25 mm
Others	=	on request

#### Version

S1	=	with quick release fastener
----	---	-----------------------------

#### Diameter range

(according to dimensions)

#### Type

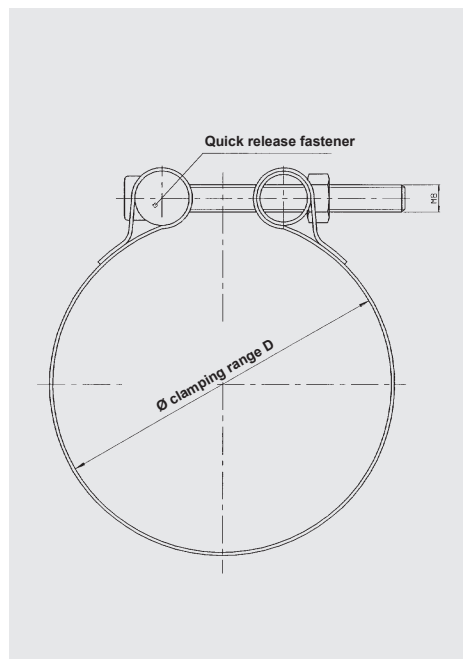
(according to dimensions)

#### Material of steel parts

F1ZN	=	clamping band F1, closing parts steel, zinc-plated
A2	=	clamping band A2, closing parts A2
A4	=	clamping band A4, closing parts A4 (on request)
M06	=	clamping band steel, hot-dip galvanised, closing parts steel, zinc-plated
Others	=	on request

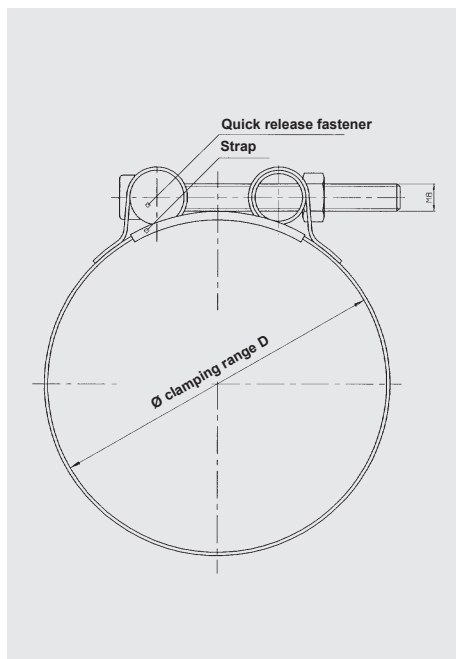
## Versions

### Single (HRGBP, HRGBF)



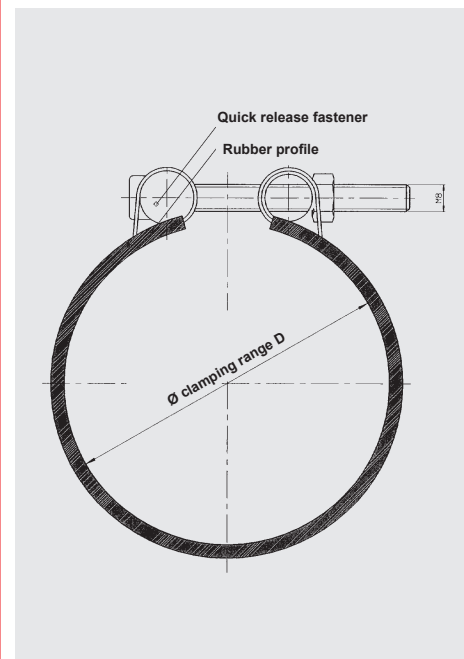
Type	Clamping diameter (range) D [mm]
62	60 – 65
64	62 – 67
70	68 – 73
76	74 – 79
82	80 – 85
88	86 – 91
94	92 – 97
100	98 – 103
106	104 – 112
115	113 – 121
124	122 – 130
133	131 – 139
142	140 – 148
151	149 – 157
160	158 – 166
169	167 – 175
178	176 – 184
187	185 – 193
196	194 – 202
205	203 – 211
214	212 – 220
223	221 – 229
231	230 – 238
241	239 – 247
250	248 – 256
259	257 – 265
268	266 – 274
277	275 – 283
286	284 – 292
295	293 – 301

### With strap (HRGBPM)



Type	Clamping diameter (range) D [mm]
62	60 – 65
64	62 – 67
70	68 – 73
76	74 – 79
82	80 – 85
88	86 – 91
94	92 – 97
100	98 – 103
108	104 – 112
117	113 – 121
126	122 – 130
135	131 – 139
144	140 – 148
153	149 – 157
162	158 – 166
171	167 – 175
180	176 – 184
189	185 – 193
198	194 – 202
207	203 – 211
216	212 – 220
225	221 – 229
234	230 – 238
243	239 – 247
252	248 – 256
261	257 – 265
270	266 – 274
279	275 – 283
288	284 – 292
297	293 – 301

### With rubber profile (HRGBPU, HRGBFU)



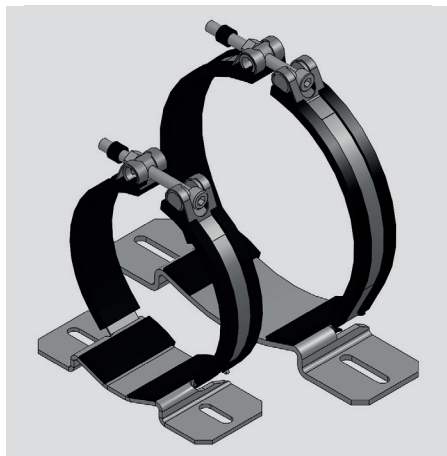
Type	Clamping diameter (range) D [mm]
62	54 – 59
64	56 – 61
70	62 – 67
76	68 – 73
82	74 – 79
88	80 – 85
94	86 – 91
100	92 – 97
106	98 – 106
115	107 – 115
124	116 – 124
133	125 – 133
142	134 – 142
151	143 – 151
160	152 – 160
169	161 – 169
178	170 – 178
187	179 – 187
196	188 – 196
205	197 – 205
214	206 – 214
223	215 – 223
231	224 – 232
241	233 – 241
250	242 – 250
259	251 – 259
268	260 – 268
277	269 – 277
286	278 – 286
295	287 – 295

## NOTE

The information in this brochure relates to the operating conditions and applications described. For applications or operating conditions not described please contact the relevant technical department.

Users bear the responsibility in all cases for determining the product's suitability in the specific application. Figures given for product characteristics are average values for a new product which are subject to an ageing process. Subject to technical modifications and errors.

**HYDAC Accessories GmbH**  
Hirschbachstr. 2  
**66280 Sulzbach/Saar**  
Tel.: +49 (0)6897 - 509-01  
Fax: +49 (0)6897 - 509-1009  
Internet: [www.hydac.com](http://www.hydac.com)  
E-mail: [info@hydac.com](mailto:info@hydac.com)



# Quick release swivel bolt band clamp

## HRGKS

**Diameter range:**  
100–230 mm

**Band width:**  
25 mm

### Model code

(also order example)

**HRGKS 1 A 124-132 / 133 H3 ZN**

#### Designation

HRGKS = HY-ROS quick release swivel bolt band clamp

#### Size

(according to dimensions)

#### Version

A = standard

#### Diameter range

(according to dimensions)

#### Type

(according to dimensions)

#### Height of pipe support

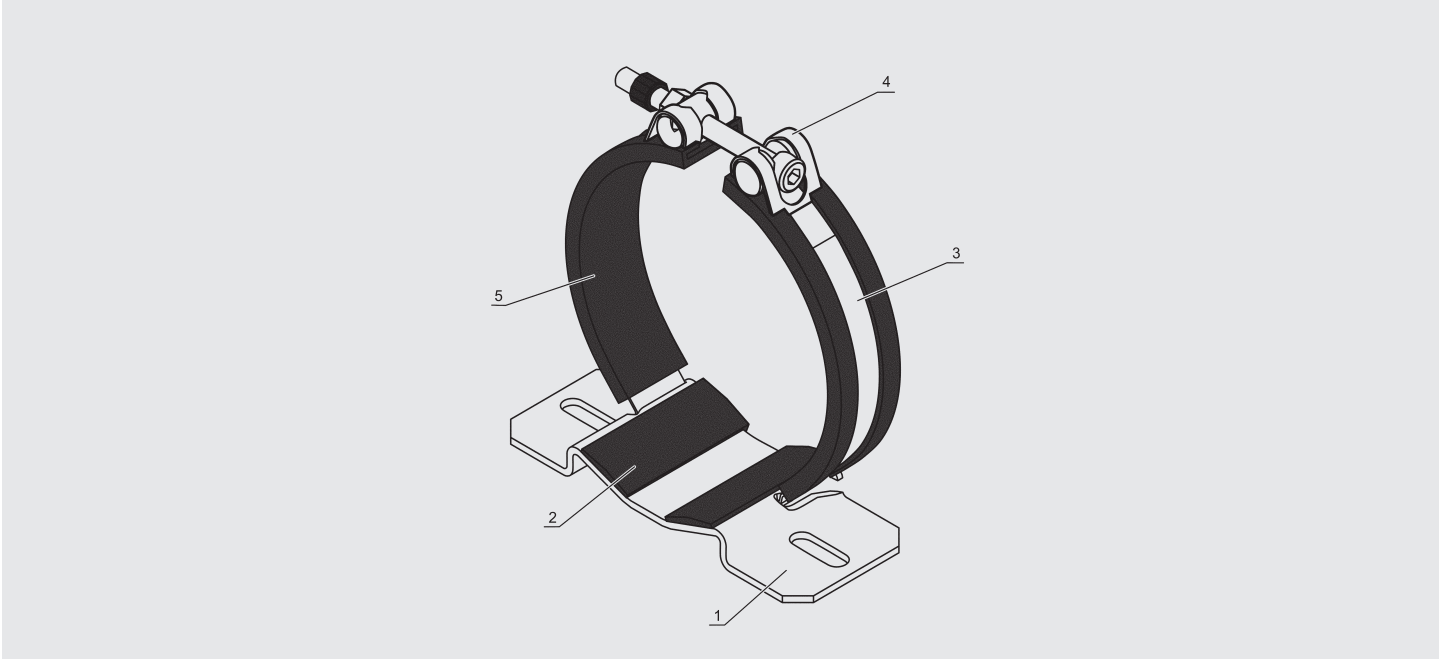
H3 = 3 mm

H5 = 5 mm

#### Material of steel parts

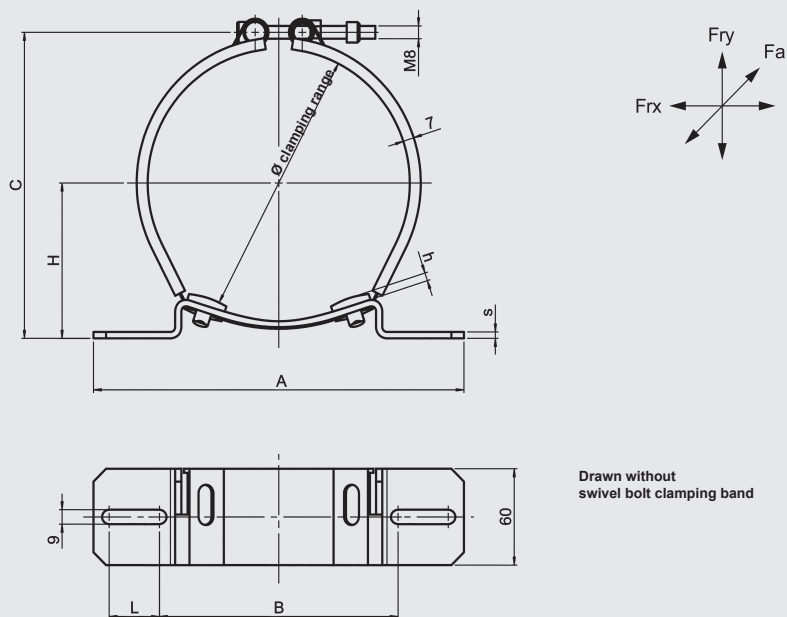
ZN = steel, zinc-plated

## Material of individual parts



Item	Designation	Material/surface	Abbreviation
1	Support	Steel, zinc-plated	ZN
2	Pipe support	Polyethylene	PE
3	Swivel bolt clamping band, round	Stainless steel	F1
4	Quick release fastening	Steel, zinc-plated	ZN
5	Rubber profile	Ethylene propylene diene monomer rubber	EPDM

## Dimensions



Size	Type	Clamping diameter (range) [mm]	H* (range) [mm]	Dimensions [mm]						Weight [kg]
				h	B	L	A	C <sub>max</sub>	s	
1	106	100 - 105	59.0 - 61.5	3	100	18	156	131	3	0.40
	115	106 - 114	62.0 - 66.0	3				140		0.41
	124	115 - 123	66.5 - 71.0	3				150		0.42
	133	124 - 132	71.5 - 76.0	3				159		0.43
	142	133 - 142	76.5 - 81.0	3				170		0.44
	151	143 - 151	82.0 - 86.0	3				179		0.45
	160	152 - 159	86.5 - 90.0	3				187		0.46
2	169	160 - 167	92.0 - 95.5	5	152	32	236	195	4	0.70
	178	167 - 175	95.5 - 99.5	5				203		1.72
	187	176 - 185	100.0 - 104.5	5				214		0.75
	196	186 - 194	105.0 - 109.0	5				224		0.76
	205	195 - 203	109.5 - 113.5	5				233		0.76
	214	204 - 213	112.0 - 116.5	3				243		0.77
	223	214 - 222	117.0 - 121.0	3				251		0.77
	231	223 - 230	121.5 - 125.0	3				259		0.78

\* Dimension "H" dependent on Ø clamping range

## Clamp size with load values

Size	Diameter [mm]	Fry [N]	Fr <sub>x</sub> [N]	Fa [N]	Tightening torque [Nm]
1	100 - 120	500	400	360	max. 17
	121 - 159	550	350	350	max. 17
2	160 - 180	1100	700	650	max. 17
	181 - 200	1200	640	640	max. 17
	201 - 230	1500	630	630	max. 17

## NOTE

The information in this brochure relates to the operating conditions and applications described. For applications or operating conditions not described please contact the relevant technical department.

Users bear the responsibility in all cases for determining the product's suitability in the specific application. Figures given for product characteristics are average values for a new product which are subject to an ageing process. Subject to technical modifications and errors.

## **HYDAC Accessories GmbH**

Hirschbachstr. 2

**66280 Sulzbach/Saar**

Tel.: +49 (0)6897 - 509-01

Fax: +49 (0)6897 - 509-1009

Internet: [www.hydac.com](http://www.hydac.com)

E-mail: [info@hydac.com](mailto:info@hydac.com)



## Diameter range:

44–506 mm

## Band width:

20–30 mm

## Quick release swivel bolt band clamp "Multi"

HRGKSM, HRVMS, HRVMW

## Model code

(also order example)

HRGKSM 2 R 186-194 / 192 ST GS O.PE

### Series

HRGKSM = HY-ROS quick release swivel bolt band clamp "Multi"  
 HRVMS = HY-ROS quick release swivel bolt band clamp "Multi" with web plate  
 HRVMW = HY-ROS quick release swivel bolt band clamp "Multi" with reinforced side wall

### Size

(according to dimensions)

### Version

R = standard

### Diameter range

(according to dimensions)

### Type

(according to dimensions)

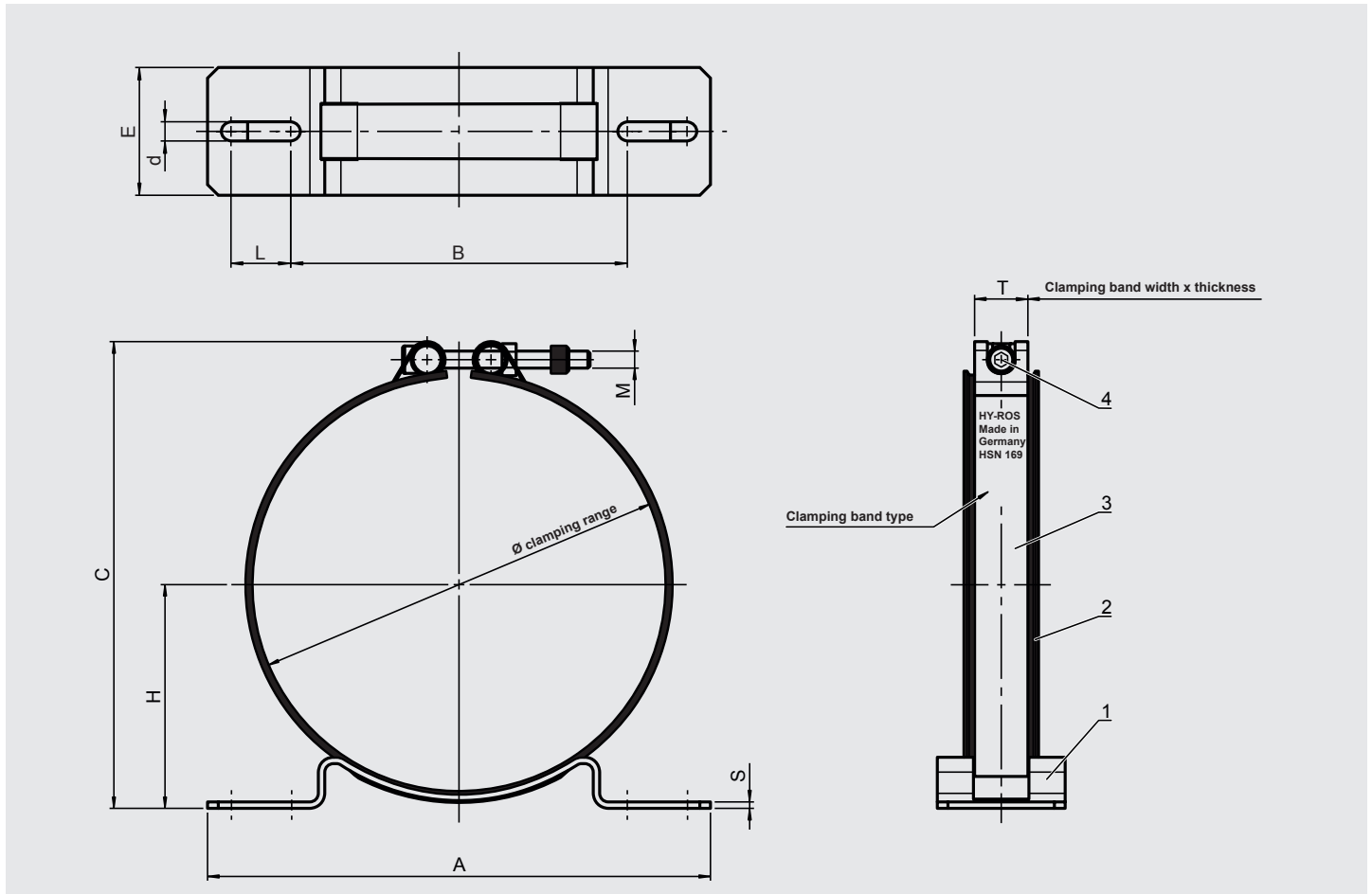
### Material of steel parts

ST = steel, zinc-plated  
 A2 = stainless steel (on request)  
 A4 = stainless steel (on request)

### Special design

GS = with slide rail (only HRVMW, size 3 and above)  
 O.PE = without plastic profile

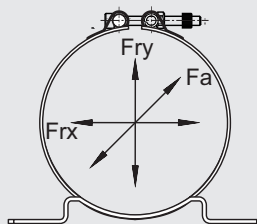
## Standard version (HRGKSM)



## Material of individual parts

Item	Designation	Material/surface	Abbreviation
1	Support	Steel, zinc-plated	ZN
2	Plastic profile	Polyethylene	PE
3	Swivel bolt clamping band, round	Stainless steel	F1
4	Quick release fastening	Steel, zinc-plated	ZN

## Maximum static load values



Size	Clamping diameter (range) [mm]	Fry [N]	Frx [N]	Fa [N]	Tightening torque [Nm]		Clamping band
					Closing parts galvanised (frictional value 0.12–0.18 $\mu$ )	Closing parts in A2 (thread lubricated with Gleitmo 805)	
0	40 - 100	400	250	250	8 <sup>+2</sup>	7 <sup>+2</sup>	20x0.8 / M6
1	101 - 163	550	350	350	17 <sup>+2</sup>	9 <sup>+2</sup>	25x1.0 / M8
2	163 - 234	1200	630	630	17 <sup>+2</sup>	9 <sup>+2</sup>	25x1.0 / M8
3	235 - 337	2200	1150	500	23 <sup>+2</sup>	18 <sup>+2</sup>	30x1.0 / M10
4	339 - 506	2000	700	350	30 <sup>+2</sup>	28 <sup>+2</sup>	30x1.5 / M10

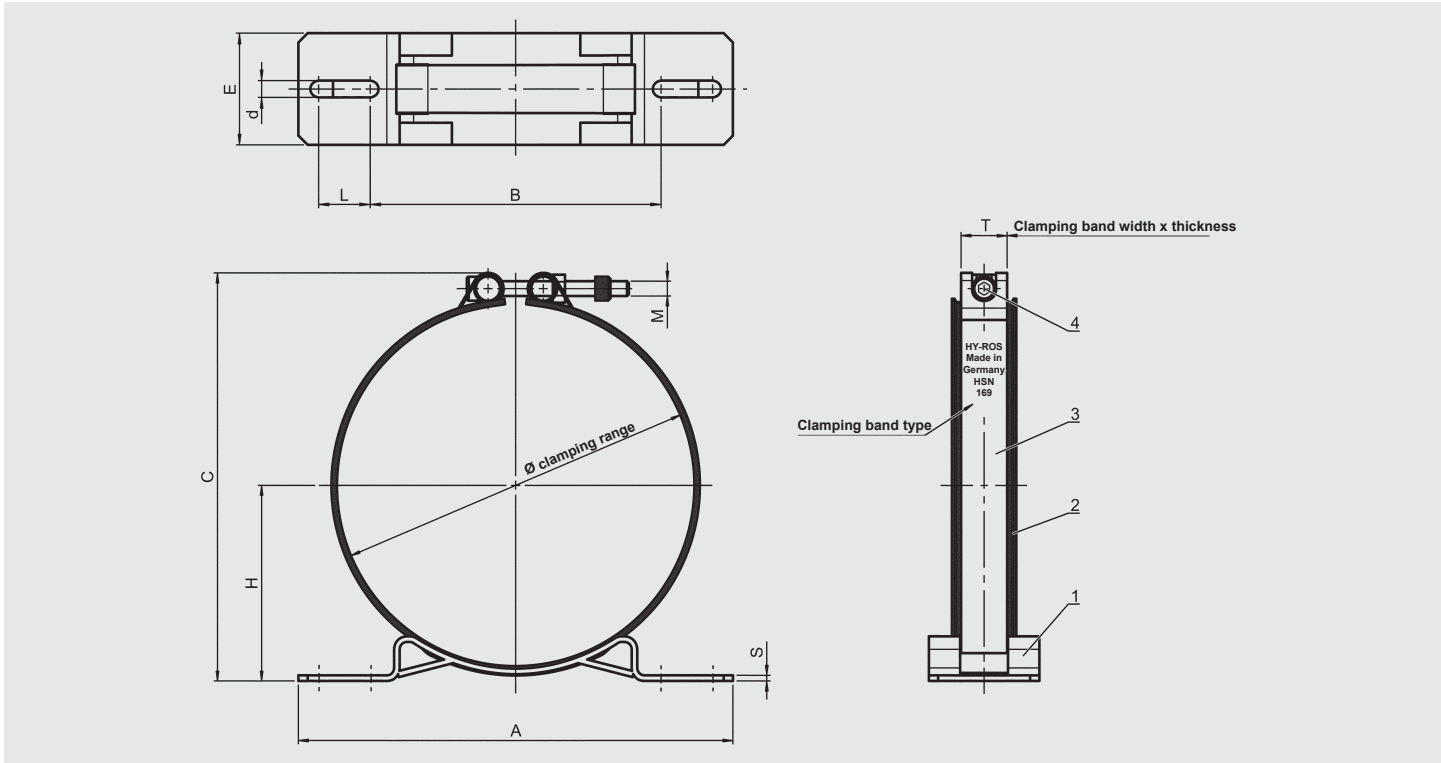
**Notice:** For self-locking nuts, the tightening torque must be increased by approx. 3–5 Nm.

## Dimensions HRGKSM

Size	Ø clamping size (range) [mm]	Type	H [mm]	C <sub>max</sub> [mm]	M	T [mm]	A [mm]	s [mm]	L [mm]	B [mm]	E [mm]	d [mm]	Material	Weight [kg/piece]
0	44 - 46	47	29.8 - 32.3	67	M6x50	20x0.8	120	3	8	85	40	9	ST	0.15
	47 - 50	50	30.8 - 32.3	69										0.15
	51 - 54	55	33.3 - 34.8	75										0.15
	55 - 58	59	35.3 - 36.8	77										0.16
	58 - 61	62	37.3 - 38.8	83										0.16
	62 - 65	65	38.0 - 39.5	85										0.20
	66 - 69	69	40.0 - 41.5	89										0.21
	70 - 73	73	42.0 - 43.5	93										0.21
	73 - 76	76	43.5 - 45.0	96										0.22
	77 - 80	80	45.5 - 47.0	100										0.22
	81 - 84	85	47.0 - 48.5	104										0.23
	85 - 88	89	49.0 - 50.5	108										0.23
	89 - 92	93	51.0 - 52.5	112										0.24
	92 - 95	96	52.5 - 54.0	115										0.24
	96 - 100	100	54.5 - 56.5	120										0.24
1	101 - 109	106	58.5 - 62.5	137	M8x80	25x1.0	156	3	18	100	50	9	ST	0.34
	110 - 118	115	63.0 - 67.0	146										0.35
	119 - 127	124	66.8 - 70.8	154										0.36
	128 - 136	133	71.3 - 75.3	163										0.37
	137 - 145	142	76.0 - 80.0	172										0.38
	146 - 154	151	80.5 - 84.5	181										0.39
	155 - 163	160	85.0 - 89.0	190										0.40
2	163 - 171	169	90.1 - 94.1	200	M8x80	25x1.0	236	3	32	152	60	9	ST	0.57
	167 - 175	173	92.1 - 96.1	204										0.58
	172 - 180	178	94.6 - 98.6	209										0.58
	181 - 189	187	98.4 - 102.4	217										0.59
	186 - 194	192	100.9 - 104.9	222										0.60
	190 - 198	196	102.9 - 106.9	226										0.60
	199 - 207	205	107.4 - 111.4	235										0.61
	208 - 216	214	111.2 - 115.2	243										0.62
	217 - 225	223	115.7 - 119.7	252										0.63
	226 - 234	231	120.2 - 124.2	261										0.64
3	235 - 246	243	129.0 - 134.5	279	M10x90	30x1.0	300	4	28	222	60	11	ST	0.97
	248 - 259	256	135.5 - 141.0	292										0.99
	261 - 272	269	140.9 - 146.4	304										1.00
	274 - 285	282	147.4 - 152.9	317										1.02
	287 - 298	295	153.9 - 159.4	330										1.03
	300 - 311	308	159.4 - 164.9	342										1.05
	313 - 324	321	165.9 - 171.4	355										1.06
	326 - 337	334	172.4 - 177.9	368										1.08
4	339 - 350	347	181.2 - 186.7	385	M10x90	30x1.5	400	4	28	322	60	11	ST	1.47
	352 - 363	360	187.7 - 193.2	398										1.49
	365 - 376	373	194.2 - 199.7	411										1.51
	378 - 389	386	200.7 - 206.2	424										1.58
	391 - 402	399	205.2 - 210.7	435										1.54
	404 - 415	412	211.7 - 217.2	448										1.56
	417 - 428	425	218.2 - 223.7	461										1.58
	430 - 441	438	224.7 - 230.2	474										1.60
	443 - 454	451	229.4 - 234.9	485										1.62
	456 - 467	464	235.9 - 241.4	498										1.63
	469 - 480	477	242.4 - 247.9	511										1.65
	482 - 493	490	248.9 - 254.4	524										1.67
	495 - 506	503	255.4 - 260.9	537										1.70

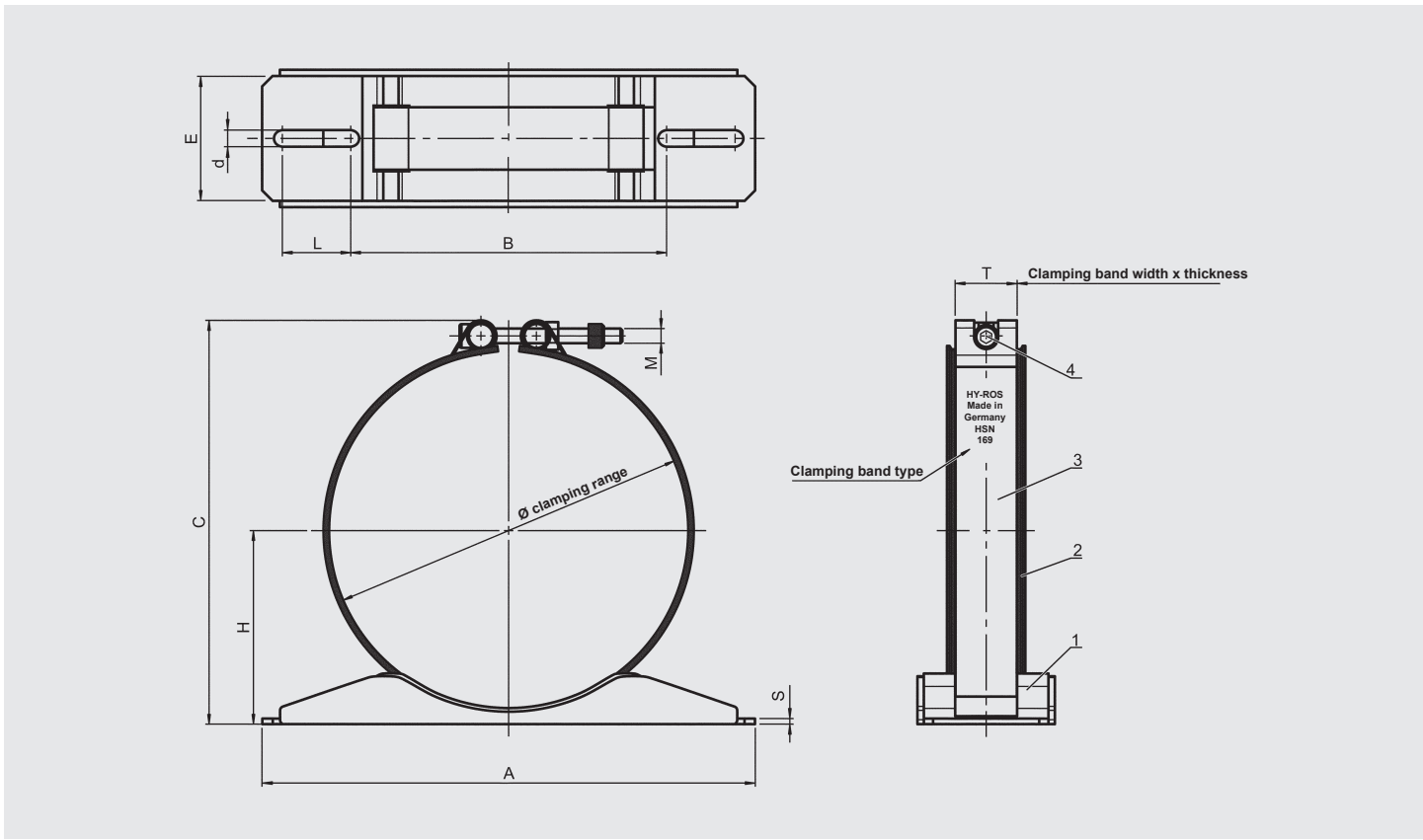
## Version with web plate (HRVMS)

Size 2 and above



## Version with reinforced side wall (HRVMW)

Size 2 and above



## Material of individual parts

Item	Designation	Material/surface	Abbreviation
1	Support	Steel, zinc-plated	ZN
2	Plastic profile	Polyethylene	PE
3	Swivel bolt clamping band, round	Stainless steel	F1
4	Quick release fastening	Steel, zinc-plated	ZN

## Dimensions HRVMS, HRVMW

Size	Ø clamping size (range) [mm]	Type	H [mm]	C <sub>max</sub> [mm]	M	T [mm]	A [mm]	s [mm]	L [mm]	B [mm]	E [mm]	d [mm]	Material	Weight [kg/piece]	
														HRVMS	HRVMW
2	159 - 167	165	88.1 - 92.1	197	M10x90	30x1.5	236	3	28	158	60	11	ST	0.73	0.85
	165 - 173	171	91.1 - 95.1	203										0.73	0.86
	172 - 180	178	94.2 - 98.2	210										0.74	0.87
	178 - 186	184	97.6 - 101.6	216										0.74	0.87
	185 - 193	191	101.1 - 105.1	223										0.75	0.88
	192 - 200	198	103.9 - 107.9	229										0.76	0.89
	198 - 206	204	106.9 - 110.9	235										0.77	0.90
	204 - 212	210	109.9 - 113.9	241										0.77	0.90
	211 - 219	217	112.7 - 116.7	248										0.78	0.91
	217 - 225	223	115.7 - 119.7	254										0.79	0.92
	224 - 232	230	119.2 - 125.2	263										0.79	0.92
3	235 - 246	243	129.0 - 134.5	279	M10x90	30x1.5	300	4	28	222	60	11	ST	1.06	1.43
	248 - 259	256	135.5 - 141.0	292										1.07	1.45
	261 - 272	269	140.9 - 146.4	304										1.08	1.46
	274 - 285	282	147.4 - 152.9	317										1.10	1.48
	287 - 298	295	153.9 - 159.4	330										1.11	1.49
	300 - 311	308	159.4 - 164.9	342										1.13	1.51
	313 - 324	321	165.9 - 171.4	355										1.14	1.52
	326 - 337	334	172.4 - 177.9	368										1.16	1.54
4	339 - 350	347	181.2 - 186.7	385	M10x90	30x1.5	400	4	28	322	60	11	ST	1.53	2.08
	352 - 363	360	187.7 - 193.2	398										1.55	2.10
	365 - 376	373	194.2 - 199.7	411										1.57	2.12
	378 - 389	386	200.7 - 206.2	424										1.58	2.13
	391 - 402	399	205.2 - 210.7	435										1.60	2.15
	404 - 415	412	211.7 - 217.2	448										1.62	2.17
	417 - 428	425	218.2 - 223.7	461										1.64	2.19
	430 - 441	438	224.7 - 230.2	474										1.66	2.21
	443 - 454	451	229.4 - 234.9	485										1.68	2.23
	456 - 467	464	235.9 - 241.4	498										1.69	2.24
	469 - 480	477	242.4 - 247.9	511										1.71	2.26
	482 - 493	490	248.9 - 254.4	524										1.73	2.28
	495 - 506	503	255.4 - 260.9	537										1.76	2.30

## NOTE

The information in this brochure relates to the operating conditions and applications described. For applications or operating conditions not described please contact the relevant technical department.

Users bear the responsibility in all cases for determining the product's suitability in the specific application. Figures given for product characteristics are average values for a new product which are subject to an ageing process. Subject to technical modifications and errors.

**HYDAC Accessories GmbH**  
Hirschbachstr. 2  
**66280 Sulzbach/Saar**  
Tel.: +49 (0)6897 - 509-01  
Fax: +49 (0)6897 - 509-1009  
Internet: [www.hydac.com](http://www.hydac.com)  
E-mail: [info@hydac.com](mailto:info@hydac.com)



## Swivel bolt prism clamp HRGPS

### Diameter range:

67–300 mm

### Band width:

25 mm

### Model code

(also order example)

HRGPS 0 AV 91-96 / 94 ST

#### Series

HRGPS = HY-ROS swivel bolt prism clamp

HRGPST = HY-ROS swivel bolt prism clamp with PE insert

#### Size

(according to dimensions)

#### Prism version

A = support with weld plate

AV = support with mounting holes (only size 0)

#### Diameter range

(according to dimensions)

#### Type

(according to dimensions)

#### Material of steel parts

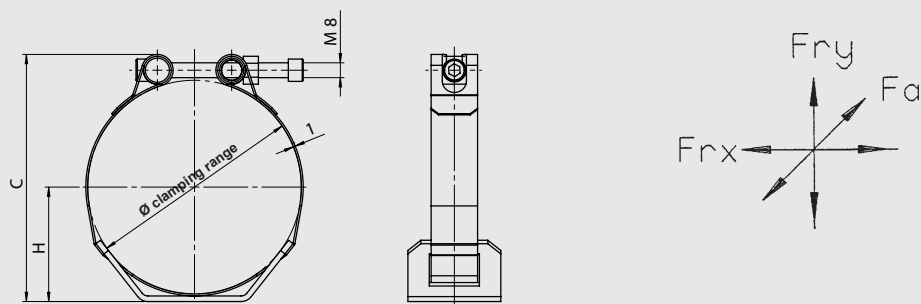
ST = steel, zinc-plated

A2 = stainless steel (on request)

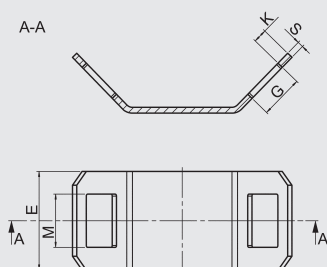
A4 = stainless steel (on request)

## Versions

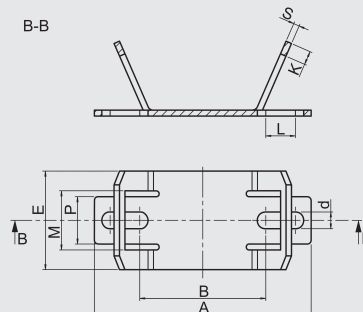
### Version A



### Prism version A



### Prism version AV



## Load values

Size	Ø clamping range [mm]	Fry [N]	Fr <sub>x</sub> [N]	Fa [N]	Tightening torque [Nm]*
0	67 - 138	450	450	350	max. 17
1	139 - 300	1000	630	630	max. 17

\* Notice: double security against deformation

## Dimensions

Size	Version	Ø clamping size (range) [mm]	Type	H		C <sub>max</sub> [mm]	E [mm]	M [mm]	S [mm]	K [mm]	G [mm]	A [mm]	B [mm]	d [mm]	L [mm]	P [mm]	Material	Weight [kg/piece]		
				[mm]														A	/	AV
0	A / AV	67 - 72	70	37.5 - 40.0	93	50	27/30	3	7	22	110	64	8.5	15	24	ST	0.25	/	0.26	
		73 - 78	76	40.5 - 43.0	99												0.26	/	0.26	
		79 - 84	82	43.5 - 46.0	105												0.26	/	0.27	
		85 - 90	88	46.5 - 49.0	111												0.26	/	0.27	
		91 - 96	94	49.5 - 52.0	117												0.27	/	0.27	
		97 - 102	100	52.5 - 55.0	123												0.27	/	0.28	
		103 - 111	106	55.5 - 59.5	132												0.27	/	0.28	
		112 - 120	115	60.0 - 64.0	141												0.28	/	0.29	
		121 - 129	124	64.5 - 68.5	150												0.29	/	0.29	
		130 - 138	133	69.0 - 73.0	159												0.29	/	0.30	
1	A	139 - 147	142	73.5 - 77.5	168	50	27	3	13	22	-	-	-	-	-	ST	0.41			
		148 - 156	151	78.0 - 82.0	177												0.42			
		157 - 165	160	82.5 - 86.5	186												0.42			
		166 - 174	169	87.0 - 91.0	195												0.43			
		175 - 183	178	91.5 - 95.5	204												0.44			
		184 - 192	187	96.0 - 100.0	213												0.44			
		193 - 201	196	100.5 - 104.5	222												0.44			
		202 - 210	205	105.0 - 109.0	231												0.45			
		211 - 219	214	109.5 - 113.5	240												0.46			
		216 - 224	219	112.0 - 116.0	245												0.47			
		220 - 228	223	114.0 - 118.0	249												0.48			
		228 - 236	231	118.0 - 122.0	257												0.48			
		238 - 246	241	123.0 - 127.0	267												0.48			
		247 - 255	250	127.5 - 131.5	276												0.49			
		256 - 264	259	132.0 - 136.0	285												0.49			
		265 - 273	268	136.5 - 140.5	294												0.50			
		274 - 282	277	141.0 - 145.0	303												0.50			
		283 - 291	286	145.5 - 149.5	312												0.51			
		292 - 300	295	150.0 - 154.0	321												0.52			

## Clamps for cylinders HRHZ



### Band width:

25 mm

### Cylinder diameter:

67–299 mm

### Pipe diameter:

6–70 mm

### Model code

(also order example)

HRHZ 12 / 3S A 172 / 33,7 PP ST M ZN

#### Series

HRHZ = HY-ROS clamp for cylinders

HRHZT = HY-ROS clamp for cylinders with PE insert

#### Size

(according to dimensions)

#### Size of clamp

...L = clamp DIN3015 Part 1, size 1–6

...S = clamp DIN3015 Part 2, size 1–4

...Z = clamp DIN3015 Part 3, size 1–5

#### Version

A = standard

#### Diameter, cylinder

#### Diameter, pipe

#### Material of clamp jaws

PP = polypropylene

PA = polyamide

#### Material of steel parts

ST = steel, zinc-plated

A2 = stainless steel (on request)

A4 = stainless steel (on request)

#### Thread type

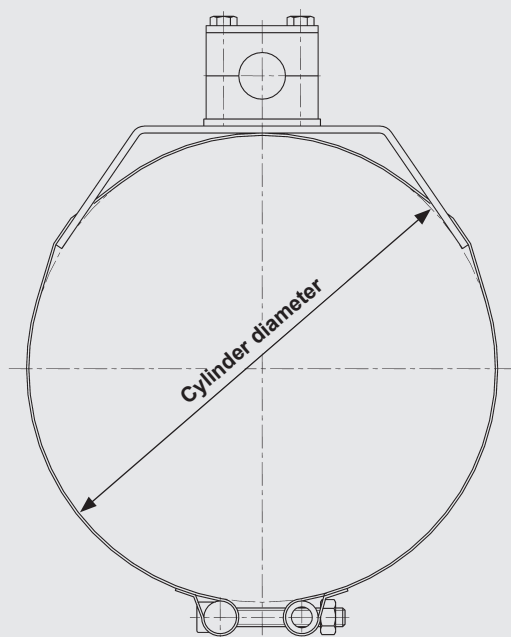
M = metric thread

#### Surface of steel parts

ZN = zinc-plated

## Standard version A

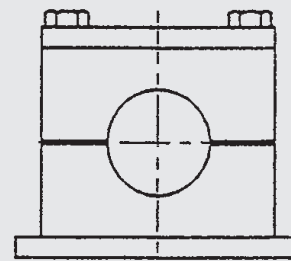
### HRGBP + DIN 3015 clamp



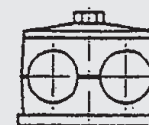
DIN3015 Part 1: size 1–6



DIN3015 Part 2: size 1–4



DIN3015 Part 3: size 1–5



**Notice:** For clamp dimensions, see 8.183  
Others on request

## Dimensions

Size	Cylinder diameter [mm]
7	67 - 88
8	89 - 99
9	100 - 114
10	115 - 140
11	141 - 169
12	170 - 194
13	195 - 220
14	221 - 274
15	275 - 299

### NOTE

The information in this brochure relates to the operating conditions and applications described. For applications or operating conditions not described please contact the relevant technical department. Users bear the responsibility in all cases for determining the product's suitability in the specific application. Figures given for product characteristics are average values for a new product which are subject to an ageing process. Subject to technical modifications and errors.

**HYDAC Accessories GmbH**  
Hirschbachstr. 2  
**66280 Sulzbach/Saar**  
Tel.: +49 (0)6897 - 509-01  
Fax: +49 (0)6897 - 509-1009  
Internet: [www.hydac.com](http://www.hydac.com)  
E-mail: [info@hydac.com](mailto:info@hydac.com)