

Monitoring System



Group
Group2

PLC running

Disk space: 144380 MB

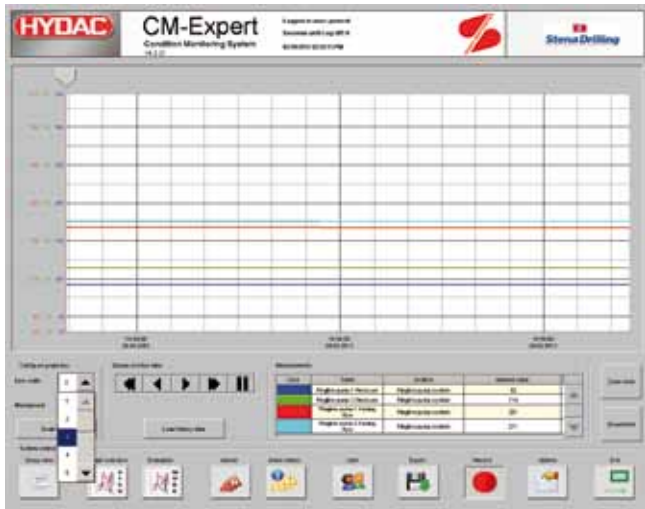


- Simulation
- Group1
- Group3
- Group4
- Group5
- Group6
- Group7
- Group8

User | Export | Record | Options | Exit

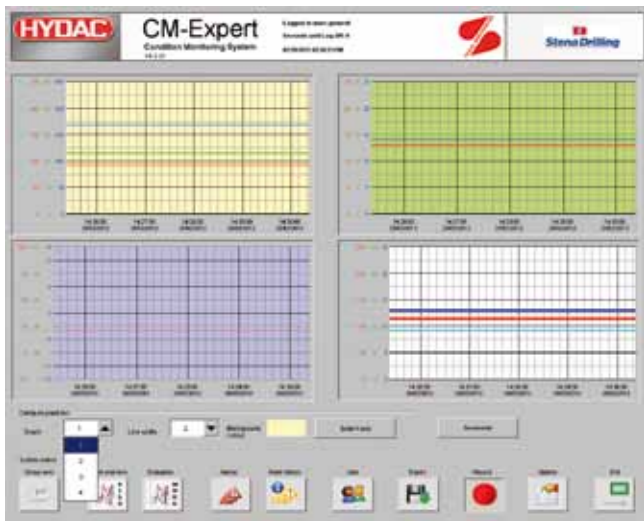
With HYDAC CM-Expert you can keep

Freely selectable display of work graphs, scalable and scrollable timeline ...



... with the relevant evaluation tables

a close eye on machine availability.



Additional view of 4 favourites



Intelligent alarm handling with comment function

HYDAC CM-Expert: Beneath its simple and intuitive interface lies sophisticated computer engineering.

Programming interface

The programming interface of CM-Expert is divided into four areas:

Information bar

General information is displayed here

Alarm and message bar

Current messages and alarms are displayed here

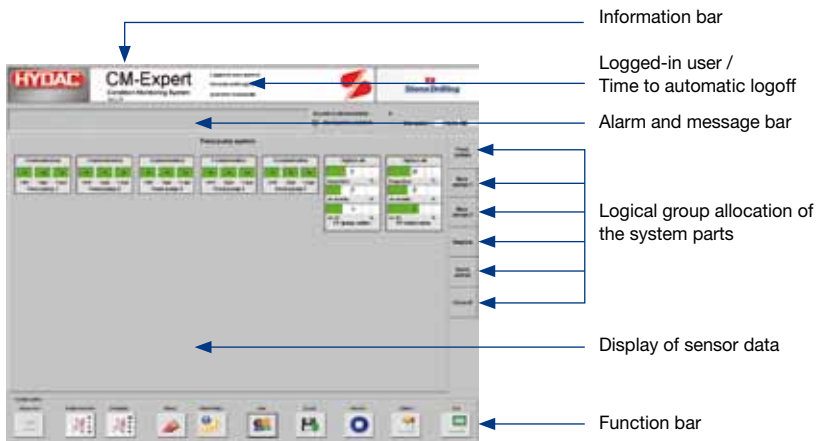
Logical allocation of the system parts

The tabs are used to arrange the display of sensor data in logical groups according to function

The display area of the sensor data is used to visualize the individual sensor data

Function bar

The various features and functions of CM-Expert can be accessed via the function bar



Functionality of display elements

If you double-click on a display element, a pop-up window opens. Provided that the user has the necessary permissions, the following items can be accessed:

Limits (user permissions required)

Graph

Info



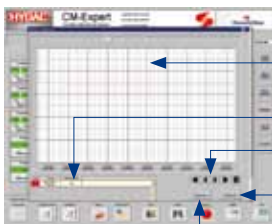
Analogue sensors
(pressure, flow rate ...)



Oil condition
(HYDACLab)



Contamination
(CS1220)



Measured value as a graph

Measured value as a number

Navigating the time-line

Scaling the time-line (x-axis)

Zoom in / Zoom out

Limit allocation and
activation
(message and limit values)



Info:
 Name of sensor
 Location of sensor
 HYDAC Part No.
 Limits
 Test point number

The work graph

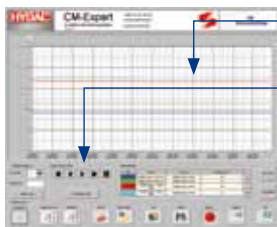
The work graph window displays a graph almost full-screen.
 The values which you want displayed can be freely selected across the groups.



Selecting the group

Double-click on the graph to open the window
 where you select which sensors to display.
 Selection can always be made across the groups

Selecting the sensors



Zoom in

Press the "Archive data" button
 to enable you to navigate forward and
 back in the time-line

Zoom out

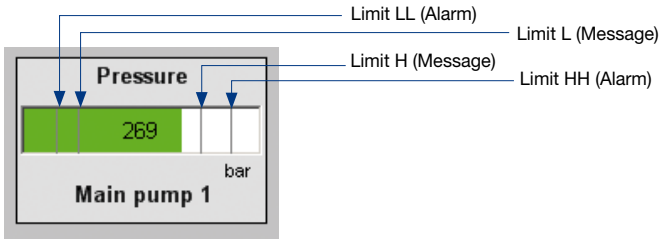
Press the "Screenshot" button
 to save the screen content as a BMP file
 in the pre-set folder (e.g. under "Options")

The alarm and message system

If limits have been defined for a sensor and these are activated, the sensor generates appropriate alarms or messages when the limits are violated. An alarm is generated when the value exceeds or falls below the LL or HH limits. A message is generated when the value exceeds or falls below the L or H limits. Alarms and messages are differentiated by colour. Alarms are displayed in "red", messages in "orange".

All alarms and messages require an acknowledgement.

In other words, each alarm and each message must be acknowledged without fail.



Alarm and message history

All accumulated alarms and messages are saved in archives and can be viewed at any time.



Selection of filter criteria:

- Period of time
- Group allocation
- Classes
- Status

Viewing alarms and messages



Each alarm / message can have one or more notes assigned to it

Options and settings

CM-Expert has options for changing the language (English and German) as well as built-in user management. The save location for screenshots can also be specified here. Any language can be integrated into the particular user profile.