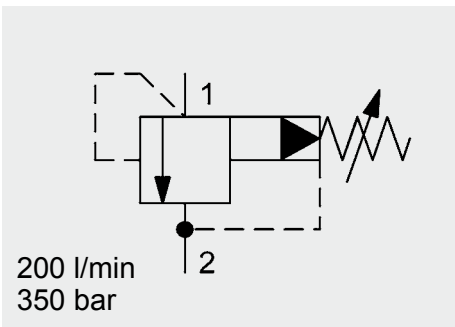
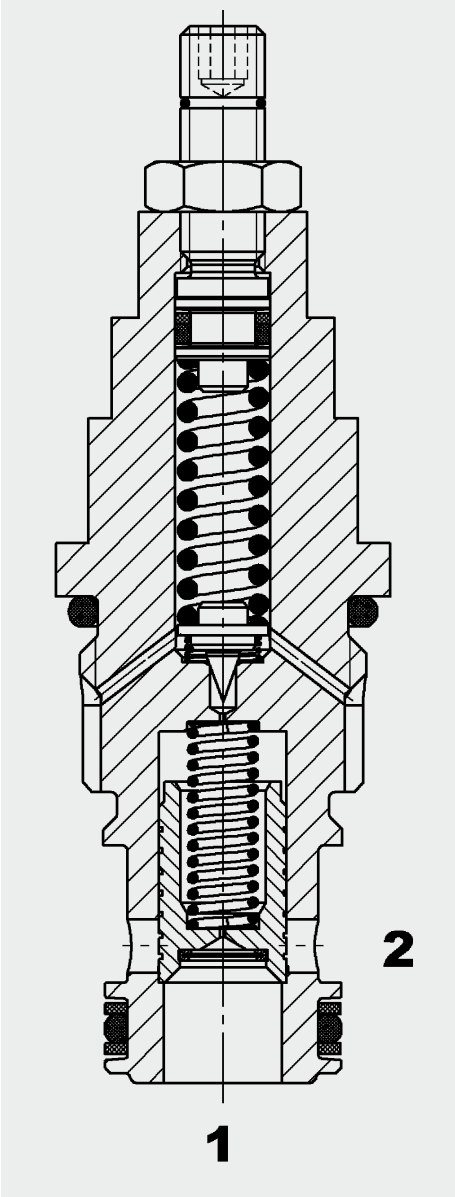


Pressure Relief Valve Spool Type, Pilot-Operated SAE-12 Cartridge – 350 bar DB12P



FUNCTION



The DB12P is a pilot-operated, spool type pressure relief valve. If the pressure at port 1 exceeds the pressure setting, the pilot poppet opens, creating a small flow over the orifice of the pilot stage to the tank. The pressure drop across the orifice lifts the main spool against a light spring, opening the connection between port 1 and port 2.

FEATURES

- External surfaces zinc-plated and corrosion-proof
- Hardened and ground internal valve components to ensure minimal wear and extended service life
- Excellent stability throughout the entire flow range
- Low pressure drop due to CFD optimized flow path
- Screen protected metering orifice enhances safety
- Optional spring ranges up to 345 bar
- Adjustable throughout flow range
- Quick response
- Compact design

SPECIFICATIONS

Operating pressure:	max. 350 bar
Nominal flow:	max. 200 l/min
Setting pressure ranges:	up to 35 bar up to 63 bar up to 125 bar up to 230 bar up to 345 bar
Internal leakage:	less than 0.5 l/min at 350 bar
Media operating temperature range:	min. -30 °C to max. +100 °C
Ambient temperature range:	min. -30 °C to max. +100 °C
Operating fluid:	Hydraulic oil to DIN 51524 Part 1 and 2
Viscosity range:	min. 7.4 mm ² /s to max. 420 mm ² /s
Filtration:	Class 21/19/16 to ISO 4406 or cleaner
Installation:	No orientation restrictions
Materials:	Valve body: free-cutting steel Spool: hardened and ground steel Seals: NBR (standard) FKM (optional, media temperature range -20 °C to +120 °C)
Cavity:	FC12-2
Weight:	0.26 kg

