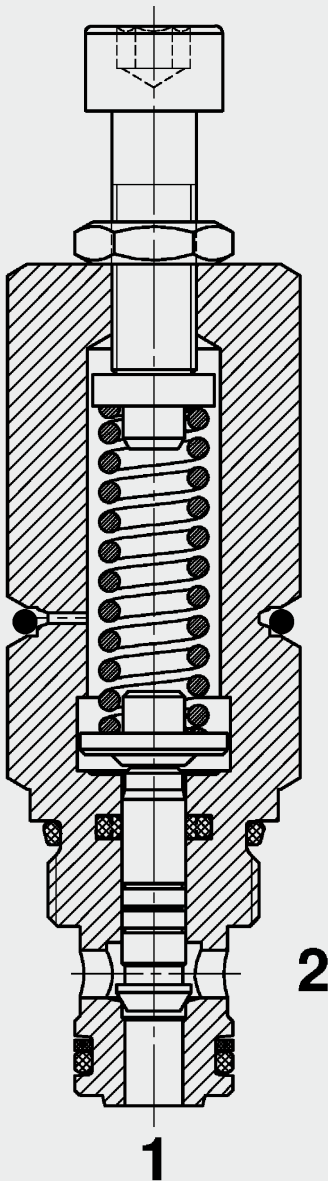


up to 30 l/min
up to 350 bar

FUNCTION



The pressure sequence valve DZM06020 is a direct-acting, spring-loaded poppet valve. If the hydraulic pressure exceeds the pre-set spring tension, the valve opens and the oil flows to port 2 (consumer). If the consumer reaches the pre-set pressure, the valve remains open.

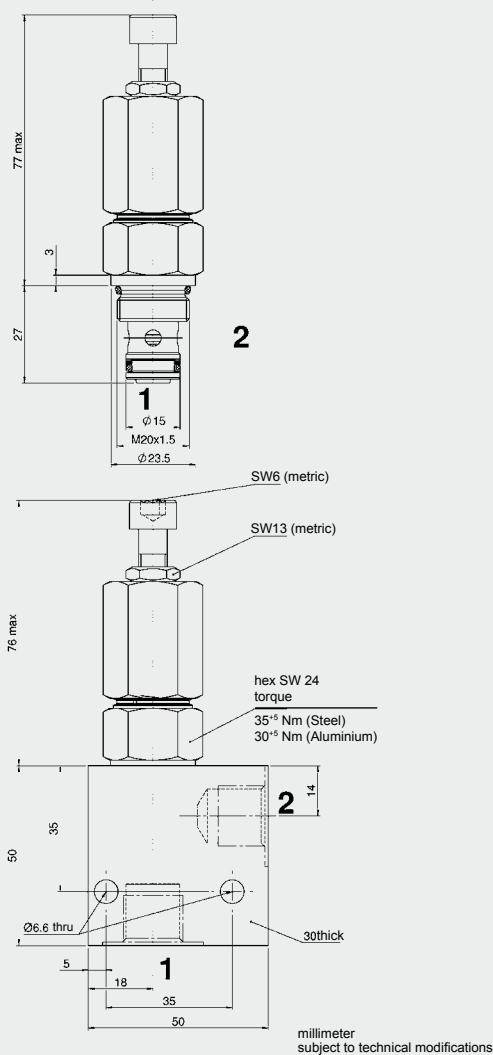
FEATURES

- To connect additional consumers once certain pressures are reached
- Excellent dynamic performance
- Excellent stability throughout the entire flow range
- External surfaces zinc-plated and corrosion-proof
- Hardened and ground valve components to ensure minimal wear and extended service life
- Low pressure drop due to CFD optimized flow path
- Various pressure ranges up to 210 bar

SPECIFICATIONS

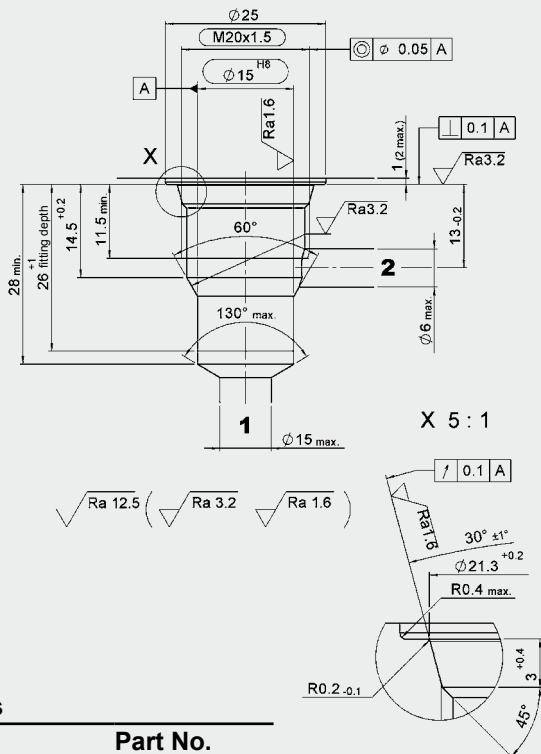
Operating pressure:	max. 350 bar, can be set up to 210 bar
Nominal flow:	max. 30 l/min
Internal leakage:	leakage-free (max. 5 drops $\hat{=}$ 0,25 cm ³ /min at 350 bar)
Setting pressure ranges:	min. 10 bar - 100 / 210 bar
Sequence pressure tolerance:	+/- 5 bar
Media operating temperature range:	min. -30 °C to max. +100 °C
Ambient temperature range:	min. -30 °C to max. +100 °C
Operating fluid:	Hydraulic oil to DIN 51524 Part 1 and 2
Viscosity range:	min. 2.8 mm ² /s to max. 800 mm ² /s
Filtration:	Class 21/19/16 to ISO 4406 or cleaner
MTTF _d :	150 years (see "Conditions and instructions for valves" in brochure 5.300)
Installation:	No orientation restrictions
Materials:	Valve body: free-cutting steel Poppet: hardened and ground steel Seals: NBR (standard) FKM (optional, media temperature range -20 °C to +120 °C) Back-up rings: PTFE
Cavity:	06020
Weight:	0.18 kg

DIMENSIONS



CAVITY

06020



Form tools

Tool	Part No.
Countersink	170033
Reamer	1000768
Tap	1002648
Plug gauge	168840

millimeter subject to technical modifications

MODEL CODE

DZM 06020 - 01 - C - N - 100 V

Basic model _____
Pressure sequence valve, metric

Cavity _____
06020 = 2-way cavity

Type _____
01 = standard

Body and ports _____
C = cartridge only

Seals _____
N = NBR (standard)
V = FKM (optional)

Setting pressure range _____
100 = up to 100 bar
210 = up to 210 bar

Type of adjustment _____
V = adjustable using tool
Other types of adjustment on request

Standard models

Model code	Part No.
DZM06020-01-C-N-100V	3361011
DZM06020-01-C-N-210V	3376262

Other models on request

Standard in-line bodies

Code	Part No.	Material	Ports	Pressure
R06020-01X-01	275266	Steel, zinc-plated	G3/8	max. 420 bar
R06020-10X-01	276842	Steel, zinc-plated	G3/8	max. 420 bar

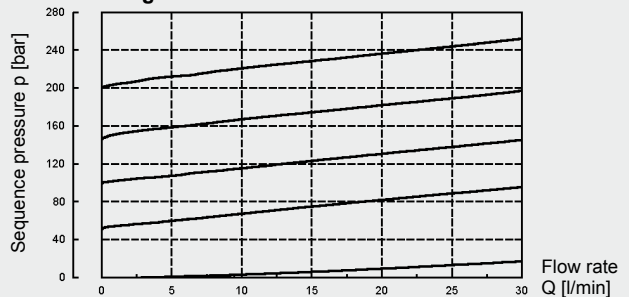
Seal kits

Code	Material	Part No.
SEAL KIT 06020-NBR	NBR	3119017
SEAL KIT 06020-FKM	FKM	3262477

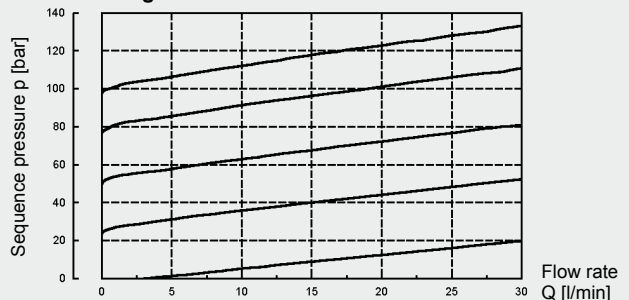
PERFORMANCE

Flow direction 1 → 2 measured at: 33 mm²/s, T_{oil} = 46 °C

Pressure range... 210 bar



Pressure range... 100 bar



NOTE

The information in this brochure relates to the operating conditions and applications described.
For applications or operating conditions not described, please contact the relevant technical department.
Subject to technical modifications.

HYDAC Fluidtechnik GmbH
Justus-von-Liebig-Str.
D-66280 Sulzbach/Saar
Tel: 0 68 97 /509-01
Fax: 0 68 97 /509-598
E-Mail: flutec@hydac.com