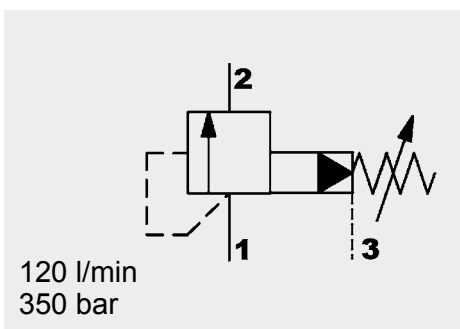
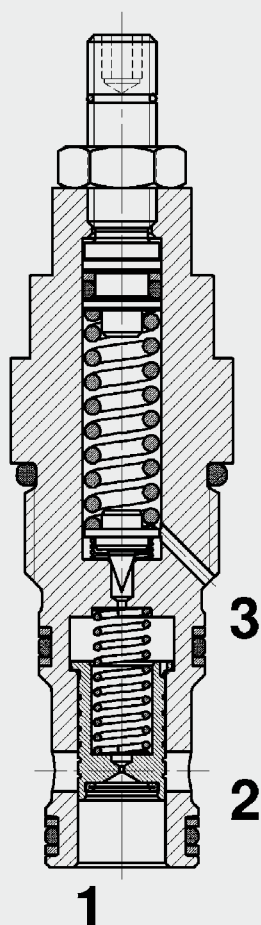


Pressure Relief Valve Spool Type, Pilot-Operated With Pilot Drain SAE-10 Cartridge – 350 bar DB10SPE



FUNCTION



The pressure relief valve DB10SPE is a pilot operated, spring loaded spool valve with pilot drain at port 3. This means that any pressure at port 2 has no influence on pressure adjustment.

If the pressure across port 1 rises and exceeds the pre-set value, the pilot-stage opens and oil flows from behind the main spool to the tank port 3. The resulting pressure differential causes the main spool to move against the reset-spring and allows oil to flow from port 1 to port 2.

FEATURES

- Additional tank connection to drain the pilot stage
- Additional use as a pilot operated pressure compensator
- Quick response
- Good stability across the whole pressure and flow range
- External surfaces zinc-plated and corrosion-proof
- Hardened and ground control piston to ensure minimal wear and extended service life
- Adjustable throughout flow range
- Different pressure ranges up to 350 bar available
- Flat p-Q curve achieved by having separate line for pilot oil (port 3)

SPECIFICATIONS

Operating pressure:	max. 350 bar
Nominal flow:	max. 120 l/min
Setting pressure range:	5 to 35 bar 5 to 60 bar 5 to 125 bar 5 to 230 bar 5 to 345 bar
Leakage:	max. 500 ml/min at 80 % of $p_{Nom. pressure}$
Media operating temperature range:	min. -30 °C to max. +100 °C
Ambient temperature range:	min. -30 °C to max. +100 °C
Operating fluid:	Hydraulic oil to DIN 51524 Part 1 and 2
Viscosity range:	min. 10 mm ² /s to max. 420 mm ² /s
Filtration:	Class 21/19/16 to ISO 4406 or cleaner
MTTF _d :	150 years (see "Conditions and instructions for valves" in brochure 5.300)
Installation:	No orientation restrictions
Materials:	Valve body: free-cutting steel Spool: hardened and ground steel Seals: NBR (standard) FKM (optional, media temperature range -20 °C to 120 °C) Back-up rings: PTFE
Cavity:	FC10-S3
Weight:	0.17 kg

