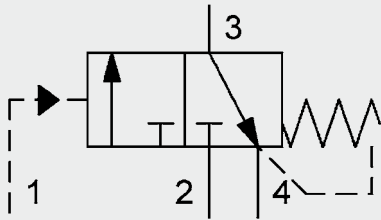


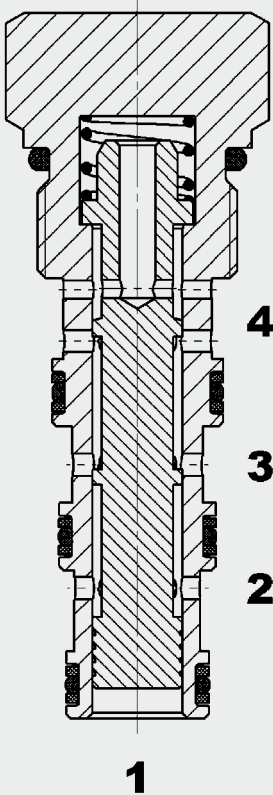
3/2 Directional Spool Valve Hydraulically Operated Direct-Acting SAE-10 Cartridge – 250 bar WKH10C

UNF



Up to 10 l/min
Up to 250 bar

FUNCTION



The WKH10C is a hydraulically operated 3/2 directional valve. Normally closed at the pump port 2, oil can flow from port 3 (consumer) to port 4 (tank) below the spring pressure.

With an application of pressure at port 1 against the spring force, the valve opens from pump port 2 to port 3. The tank port 4 is then closed.

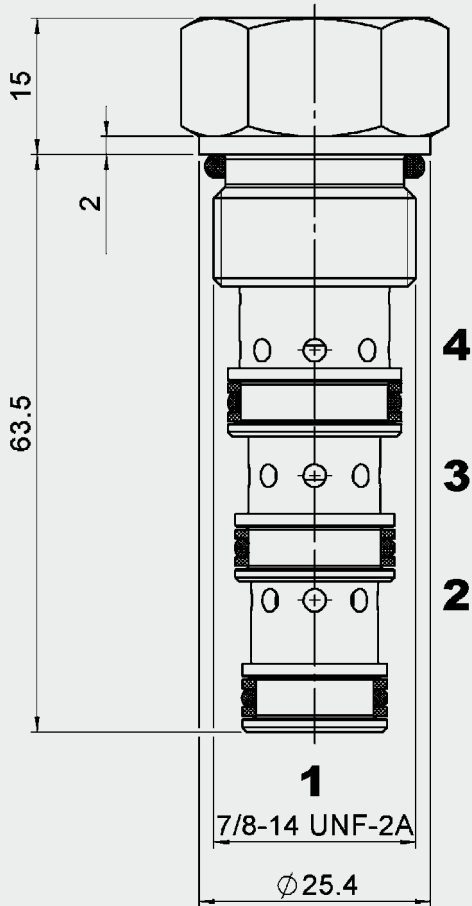
FEATURES

- Low pressure drop throughout flow range
- External surfaces zinc-plated and corrosion-proof
- Hardened and ground internal valve components to ensure minimal wear and extended service life

SPECIFICATIONS

Operating pressure:	max. 250 bar
Nominal flow:	max. 10 l/min
Internal leakage:	max. 120 cm ³ /min at 250 bar and 36 mm ² /s
Media operating temperature range:	min. -30 °C to max. +100 °C
Ambient temperature range:	min. -30 °C to max. +80 °C
Operating fluid:	Hydraulic oil to DIN 51524 Part 1 and 2
Viscosity range:	min. 10 mm ² /s to max. 420 mm ² /s
Filtration:	Class 21/19/16 according to ISO 4406 or cleaner
MTTF _d :	150 years (see "Conditions and instructions for valves" in brochure 5.300)
Installation:	No orientation restrictions
Materials:	Valve body: steel Spool: hardened and ground steel Seals: NBR (standard) FKM (optional, media temperature range -20 °C to +120 °C)
	Back-up rings: PTFE
Cavity:	FC10-4
Weight:	approx. 0.15 kg

DIMENSIONS



Millimeter
Subject to technical modifications.

MODEL CODE

WKH 10 C-01-C-N-26

Basic model _____

Directional valve, hydraulically operated

Cavity _____

Symbol _____

Type _____

01 = standard
(negative overlap)

Body and ports _____

C = cartridge only

Versions with bodies on request*

Seals _____

N = NBR (standard)

V = FKM (optional)

Switch pressure _____

26 = 1.8 bar (26 PSI) up to 3.6 bar (52 PSI)

Others on request

Standard models

Model code	Part No.
WKH10C-01-C-N-26	3036366

Other models on request

*Standard in-line bodies

Code	Part No.	Material	Ports	Pressure
FH104-SB4	3037784	Steel, zinc-plated	1/2 BSP	420 bar
FH104-AB4	3038097	Aluminium, anodized	1/2 BSP	210 bar

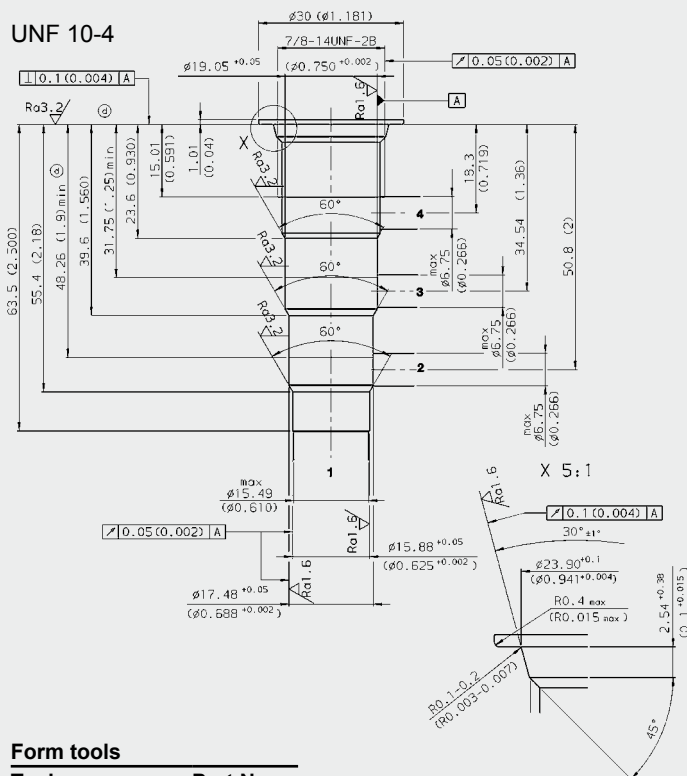
Other line bodies on request

Seal kits

Code	Material	Part No.
FS104-N SEAL KIT	NBR	3051912
FS104-V SEAL KIT	FKM	3071275

CAVITY

UNF 10-4



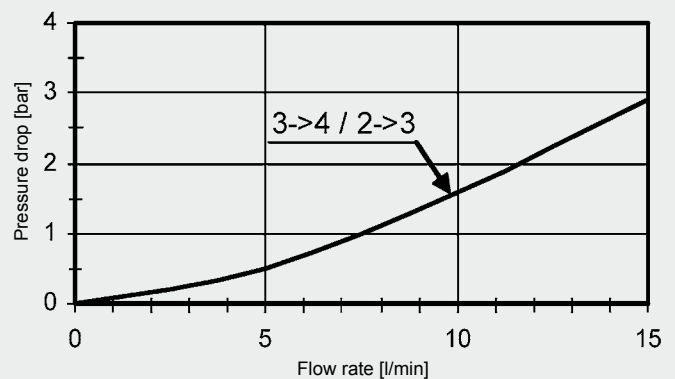
Form tools

Tool	Part No.
Countersink	176174
Reamer	176175

Millimeter (inch)
Subject to technical modifications.

PERFORMANCE

measured at $v = 33 \text{ mm}^2/\text{s}$, $T_{\text{oil}} = 46 \text{ }^\circ\text{C}$,



NOTE

The information in this brochure relates to the operating conditions and applications described. For applications and operating conditions not described, please contact the relevant technical department. Subject to technical modifications.

HYDAC Fluidtechnik GmbH

Justus-von-Liebig-Str.

D-66280 Sulzbach/Saar

Tel: 0 68 97 / 509-01

Fax: 0 68 97 / 509-598

E-Mail: flutec@hydac.com