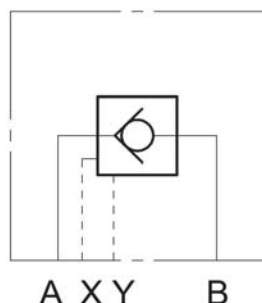




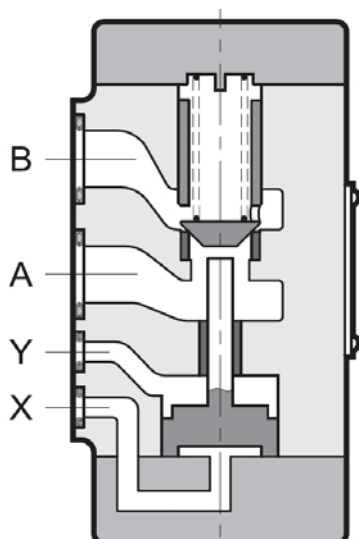
## Check Valve Hydraulically pilot to open Subplate to ISO 5781 VP-RP10

### SYMBOL



up to 320 bar  
up to 100 l/min

### FUNCTION



### FEATURES

- Hole pattern to ISO 5781-08, Nominal size 10
- pilot to open check valve
- low flow loss by maximum size bore holes

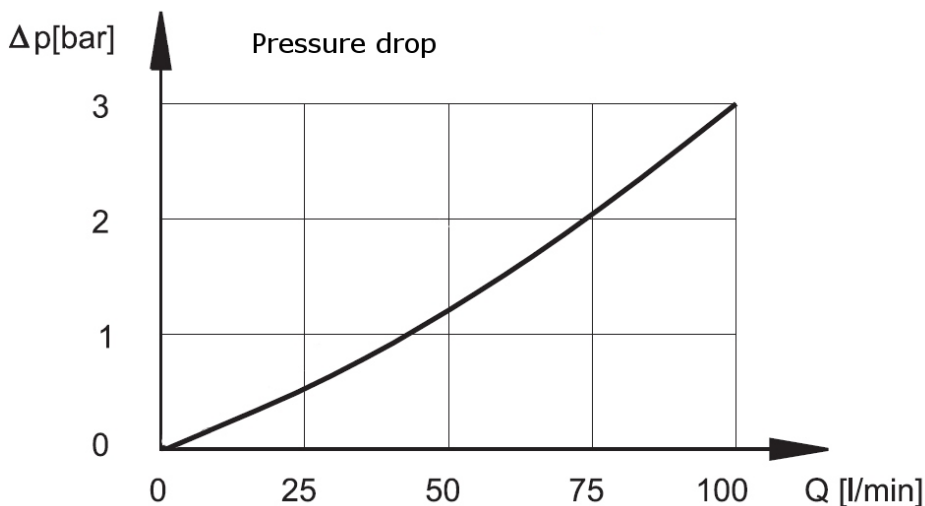
### SPECIFICATIONS

Operating pressure:	max. 320 bar
Flow rate:	max. 100 l/min
Pilot ration:	3,4 : 1
Operating fluid:	hydraulic oil to DIN 51524 part 1 and 2
Operating fluid temp. range:	-20°C up to max. +80°C
Ambient temperature range:	-20°C up to max. +50°C
Viscosity range:	7,4 – 400 mm <sup>2</sup> /s is recommended
Filtration:	Class 20/18/15 according to ISO 4406
Installation:	no orientation restriction
Hole pattern:	according to ISO5781-08
Weight:	3,7 kg

### PERFORMANCE

measured at  $v = 36 \text{ mm}^2/\text{s}$  and  $T_{\text{oil}} = 50^\circ \text{C}$

The data in the diagram are valid for the flow from B→A and A→B with an open valve.  
For the flow from ports A→B, with a closed valve please add the cracking pressure to the data in the diagram.



**Standard models**

VP-RP10 35 S01/V

VP-RP10 50 S01/V

Other models on request

**Part No.**

3541184

3541188

**MODEL CODE**

VP-RP10 35 S01/V

**Name and size**

Check valve pilot to open NW 10

**Cracking pressure**

35 = 3,5 bar

50 = 5,0 bar

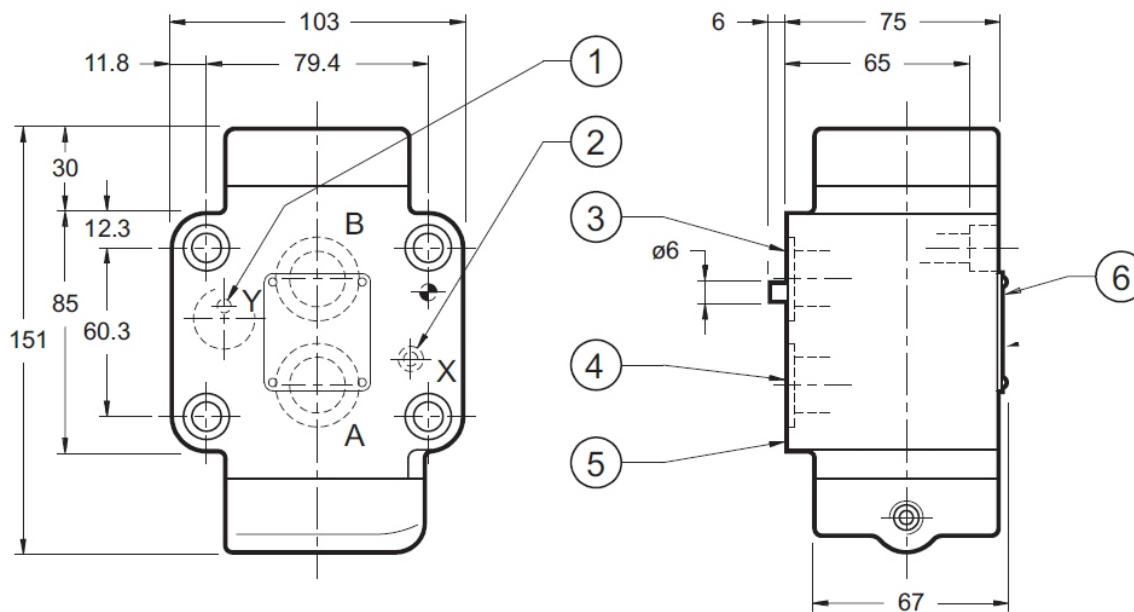
**Type**

S01 = Standard

**Seal material**

V = FKM (Standard)

N = NBR

**DIMENSIONS**

1) External leakage line Y

3) Outlet port B

5) Mounting plate with O-rings, 2x O-Ring 17,13 x 2,62 FKM  
2x O-Ring 5,28 x 1,78 FKM

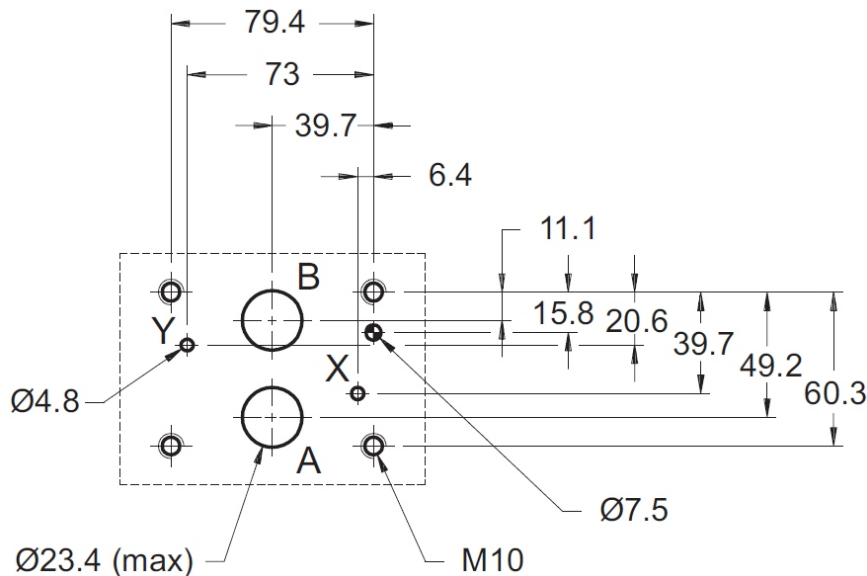
2) Control port X

4) Inlet port A

6) Type plate

Fastening screws: 4x Allen key M10x70 10.9, Torque: 40 Nm + 4 Nm

All dimensions in mm. Fastening elements are not in the scope of delivery.

**Mounting plate to ISO 5781-08-07-\*-00****Annotation**

The technical information in this brochure are relating to the operating conditions and applications.

At deviant applications and/or operating conditions please contact the technical dept.

Technical information are subject to technical modifications.

HYDAC Fluidtechnik GmbH  
Justus-von-Liebig-Str. 5  
66280 Sulzbach / Saar  
Tel.: 06897 / 509 -0  
Fax: 06897 / 509 -598  
Email: flutec@hydac.com