

AEV Series

Automatic Air Vent Valves



Model Code

AEV - 6 / 5

Part Number

00230223

Mounting

The inlet port is connected to the pressure line and the outlet port should be connected back into the non-pressurized reservoir.

For ventilation of pumps the valve should be mounted adjacent to the pump outlet. For system ventilation the valve should be mounted at the system's highest point.

Description

The HYDAC Air Vent Valve eliminates air bubbles which accumulate in hydraulic systems immediately after start-up or after long periods of shut-down of the system.

The Air Vent Valve remains open until the valve reaches a 45 psi differential pressure.

Pressure must be maintained above 45 psi to keep valve closed.

This type of operation of the HYDAC Air Vent Valve allows for easy start-up of hydraulic systems.

Due to the compact design the Air Vent Valve requires minimum space.

Technical Data

Operating Pressure Range

- P min 43 psi (3 bar)
- P max 8700 psi (600 bar)

Material

- Carbon Steel

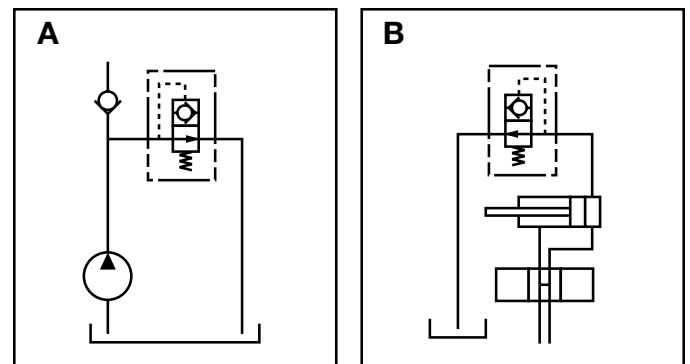
Operating Flow Range

- Q min 0.25 gpm (1 l/min)
 - Q max 15 gpm (57 l/min)
- to achieve higher flow rates, parallel connection is possible

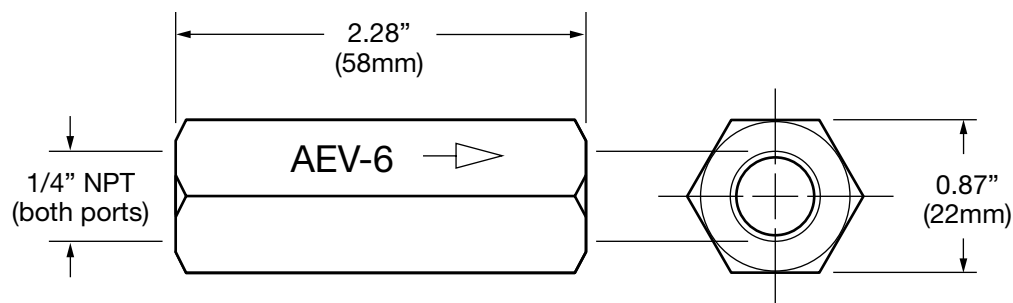
Mounting Positions

Optional - see figures A and B.

The return line must be connected to reservoir below the minimum oil level.



Dimensions



Notes:

1. Dimensions are in inches (mm).
2. Dimensions are for general information only, all critical dimensions should be verified by requesting a certified print.