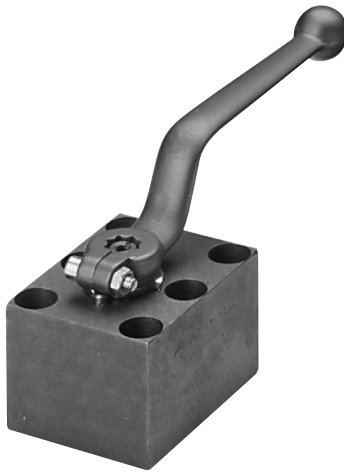


# HIGH PRESSURE BALL VALVES

## KHP Series

### 2-way Manifold Mounted Ball Valves



### Specifications

- Sizes 3/8" - 2"
- Carbon Steel Housing
- Ball Seals: Polyacetal (*standard*)
- O-Rings: Fluoroelastomer (*FPM*) (*standard*)
- Operating Pressure: to 5000 psi depending on seal materials selected
- Temperature Range: 14° to 176°F with standard materials (*1114*) up to maximum pressure rating. Extended temperature range -40° to 392°F on request with special materials and reduced pressure rating (*see page A1-3*).

### Model Code

**KHP - 20 - 1 1 1 4 - 12X - A - L**

#### Housing Type

KHP = Block Housing for Manifold mounting

#### Nominal Sizes

Valve Size	Nominal Size
10	3/8"
16	1/2"
20	3/4"
25	1"
32	1-1/4"
40	1-1/2"
50	2"

#### Body Material

1 = Carbon Steel

#### Spindle and Ball Material

1 = Carbon Steel (*ball is chrome plated, spindle is zinc plated*)  
3 = Stainless Steel

#### Ball Seal Material

1 = Polyacetal (*standard*)  
3 = PTFE (*1500 psi max*)

#### O-Ring Material

2 = NBR (*Buna N*)  
3 = PTFE Spindle Seals and FPM (*fluoroelastomer*) O-Rings (*1500 psi max*)  
4 = FPM (*fluoroelastomer*) (*standard*)  
5 = EPR

#### Handle Codes

09x = Without Handle  
12x = Offset Aluminum sizes 10 - 25  
16x = Offset Steel sizes 32 - 50

#### Housing Surface Finish

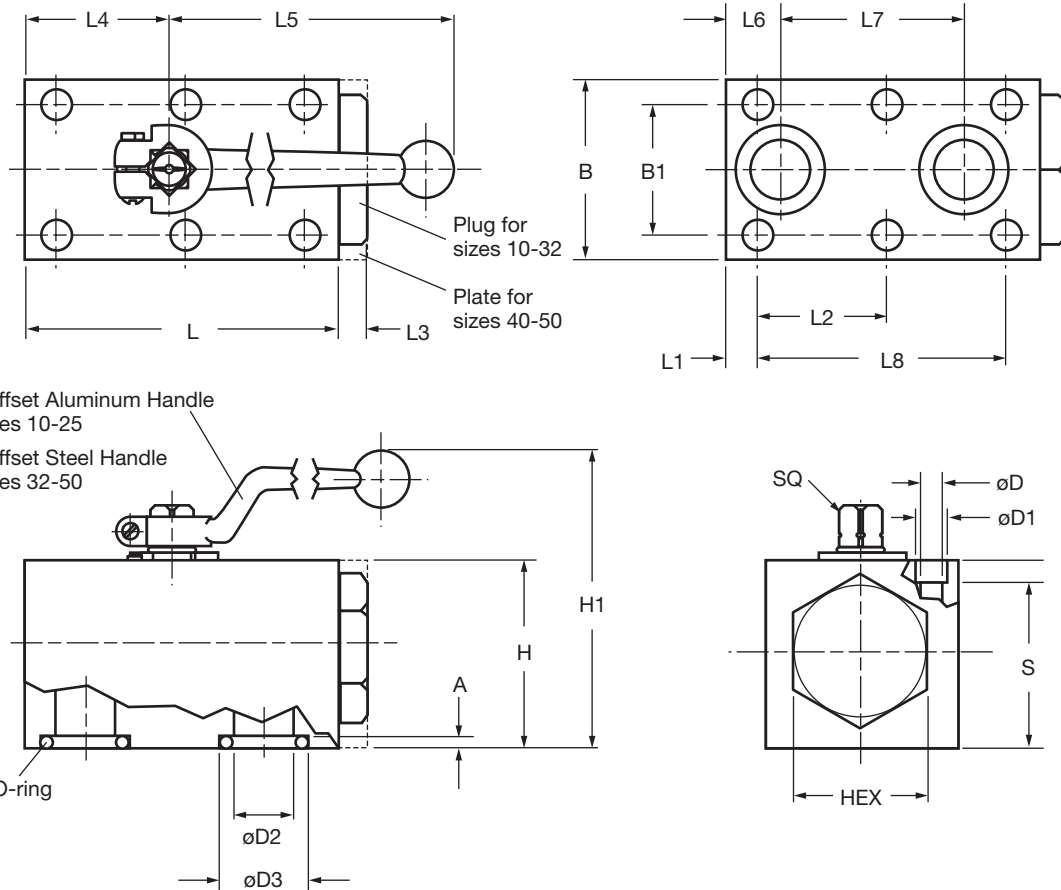
A = Zinc plated (*standard for all carbon steel valves*)

#### Locking Device Option

L = Locking Device (*see page A1-22 to order locking device separately*)  
LS = Locking Device with 5 amp Limit Switch (*Sizes 20, 25 only*) (*Not available with PTFE Spindle Seals*)

# HIGH PRESSURE BALL VALVES

## Dimensions



Model	Max. psi*	A	B	B1	ø D	ø D1	ø D2	ø D3	HEX	H	H1	O-ring	Weight
KHP-10	5000	0.08 (2)	2.17 (55)	1.575 (40)	0.35 (9)	0.55 (14)	0.374 (9.5)	0.591 (15)	1 3/16 (30)	1.77 (45)	3.58 (91)	10x2.6	2.6 (1.2)
KHP-16	5000	0.08 (2)	2.36 (60)	1.772 (45)	0.35 (9)	0.55 (14)	0.630 (16)	0.984 (25)	1 7/16 (36)	2.17 (55)	4.45 (113)	20.3x2.6	4.6 (2.1)
KHP-20	5000	0.12 (3)	2.76 (70)	2.008 (51)	0.41 (10.5)	0.65 (16.5)	0.787 (20)	1.181 (30)	1 5/8 (41)	2.76 (70)	5.16 (131)	23.4x3.5	8.2 (3.7)
KHP-25	5000	0.12 (3)	3.15 (80)	2.362 (60)	0.41 (10.5)	0.65 (17)	0.925 (23.5)	1.378 (35)	2 (50)	3.15 (80)	5.55 (141)	28.2x3.5	12.3 (5.6)
KHP-32	5000	0.12 (3)	3.94 (100)	3.071 (78)	0.51 (13)	0.75 (19)	1.260 (32)	1.551 (39.4)	2 9/16 (65)	3.94 (100)	8.07 (205)	32.9x3.5	23.4 (10.6)
KHP-40	5000	0.12 (3)	5.12 (130)	3.740 (95)	0.69 (17.5)	1.02 (26)	1.496 (38)	1.906 (48.4)	-	3.94 (100)	8.07 (205)	42x3.5	38.6 (17.5)
KHP-50	5000	0.12 (3)	5.91 (150)	4.409 (112)	0.87 (22)	1.30 (33)	1.89 (48)	2.181 (55.4)	-	4.33 (110)	8.46 (215)	49x3.5	43.7 (19.8)

Model	L	L1	L2	L3	L4	L5	L6	L7	L8	S	SQ	Bolt Size**	Torque**
KHP-10	2.76 (70)	0.295 (7.5)	1.083 (27.5)	0.39 (10)	1.14 (29)	5.51 (140)	0.394 (10)	1.732 (44)	2.165 (55)	1.42 (36)	0.35 (9)	5/16" - 18 UNC x 2"	26 ft/lb
KHP-16	3.94 (100)	0.335 (8.5)	1.634 (41.5)	0.39 (10)	1.73 (44)	6.42 (163)	0.669 (17)	2.284 (58)	3.268 (83)	1.81 (46)	0.47 (12)	5/16" - 18 UNC x 2 1/4"	26 ft/lb
KHP-20	4.61 (117)	0.394 (10)	1.909 (48.5)	0.39 (10)	2.01 (51)	7.20 (183)	0.787 (20)	2.717 (69)	3.819 (97)	2.34 (59.5)	0.55 (14)	3/8" - 16 UNC x 3"	45 ft/lb
KHP-25	5.32 (135)	0.394 (10)	2.264 (57.5)	0.39 (10)	2.44 (62)	7.20 (183)	0.945 (24)	3.189 (81)	4.528 (115)	2.72 (69)	0.55 (14)	3/8" - 16 UNC x 3 1/4"	45 ft/lb
KHP-32	6.50 (165)	0.472 (12)	2.677 (68)	0.43 (11)	2.95 (75)	12.00 (305)	1.142 (29)	3.780 (96)	5.354 (136)	3.31 (84)	0.67 (17)	7/16" - 14 UNC x 4"	75 ft/lb
KHP-40	7.09 (180)	1.122 (28.5)	2.205 (56)	0.98 (25)	3.33 (84.6)	12.00 (305)	1.122 (28.5)	4.409 (112)	4.409 (112)	3.25 (82.5)	0.67 (17)	5/8" - 11 UNC x 4 1/4"	220 ft/lb
KHP-50	8.66 (220)	1.496 (38)	2.677 (68)	0.98 (25)	4.17 (106)	12.00 (305)	1.496 (38)	5.354 (136)	5.354 (136)	3.48 (88.5)	0.67 (17)	3/4" - 10 UNC x 4 1/2"	400 ft/lb

\*Dependent upon valve and seal materials selected.

\*\*Bolt size and torque provided as reference only. Manifold designs must take all factors (materials, pressure, etc.) into consideration.

Consult HYDAC Engineering for more information.

Notes:

1. Dimensions are in inches (mm) and lbs (kg)

2. Dimensions are for general information only, all critical dimensions should be verified by requesting a certified print.