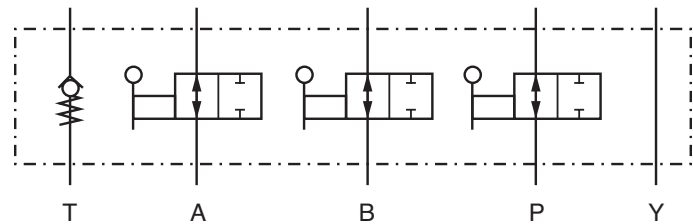
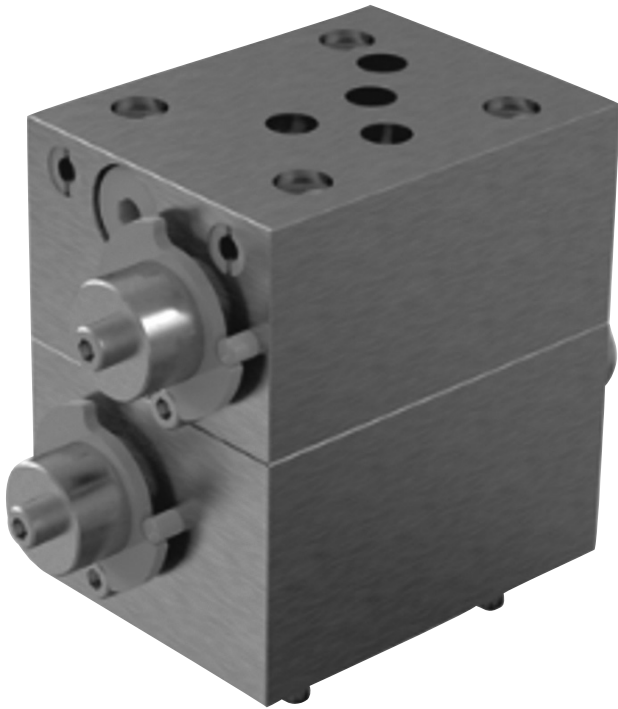


HIGH PRESSURE BALL VALVES

KHZ Series

Sandwich Plate CETOP Isolation Valve



PN 315
DN 06, DN 10

Description

The CETOP isolation valve is placed before DN06/DN10 directional valves on a manifold and is used to isolate the ports of the directional valve. This allows the directional valve to be changed out quickly without the need to depressurize the entire system.

Features

- No leak design using ball valves
- Tank line with check valve function
- Individual isolation for each of the ports
- UNC threads

Technical Specifications

- Type of Construction: Sandwich plate
- Type of Connection: CETOP, DIN 24340, DIN ISO 4401
- Mounting Position: No orientation restrictions
- Ambient Temperature: -10°C to +80°C
- Nominal Pressure: up to PN 315
- Operating Media: Mineral oil ISO VG 46
- Temperature of Operating Media: -10°C to +80°C
- Viscosity: 10 to 380 mm²/S

Target Markets:

OEM / MRO/ Industrial

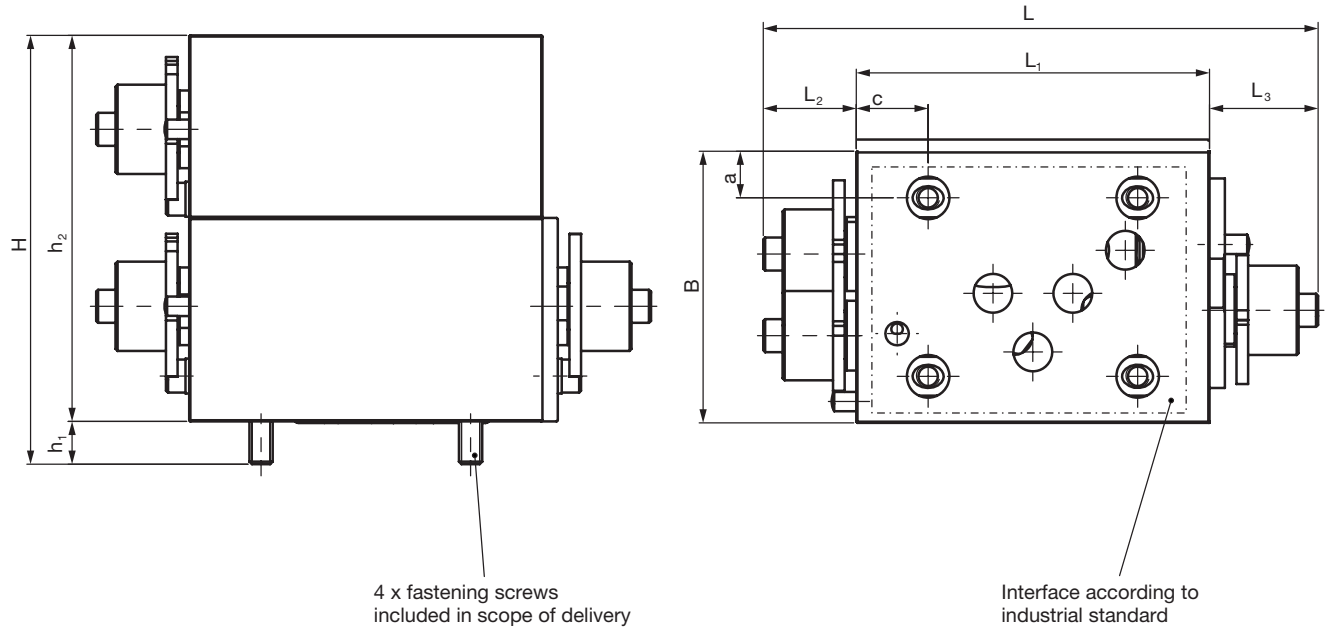
P/N	Model Code	Lead time
4583754	KHZ-DN06_CETOP-1112-09X-A-PABT*UNC	3 Work Days
4583870	KHZ-DN10_CETOP-09X-A-PABT*UNC	3 Work Days

Model Code

	KHZ	DN06	CETOP	1	1	1	2	09X	PABTY*	UNC
Series _____										
Nominal Bore _____										
DN 06										
DN 10										
Connection Type _____										
CETOP										
Body Material _____										
1 = Carbon Steel										
Spindle and Ball Material _____										
1 = Carbon Steel										
3 = Stainless Steel										
Ball Seal Material _____										
1 = Polyacetal										
O-ring Material _____										
2 = NBR (Buna N)										
Handle Codes _____										
09X = without handle										
Ports _____										
P – Pressure Port P, can be shut off										
A – Working Port A, can be shut off										
B – Working port B, can be shut off										
T – Tank connection, with non- return valve										
Y – Pilot port valve										
Standard mounting threads _____										

*Optional

Dimensions



4 x fastening screws
included in scope of delivery

Interface according to
industrial standard

DN	H	B	L	L1	L2	L3	a	c	h1	h2	Fastening screws
06	76.5	48	99.1	66.5	14.9	17.7	8.5	13	9	67.5	10-24 x 2 ¼ " long
10	110.5	70	143	91	24	28	12	18.5	11	99.5	¼-20UNC x 3 ½" long

Note: Metric fastening screws available. Call HYDAC for more information.