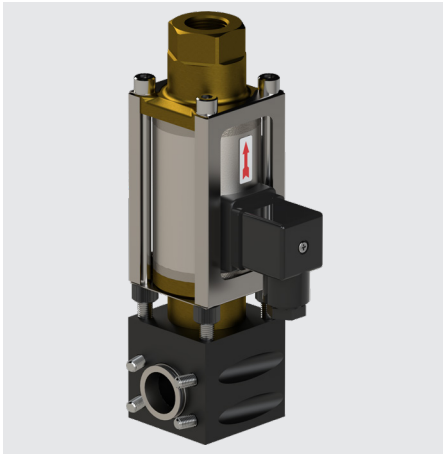
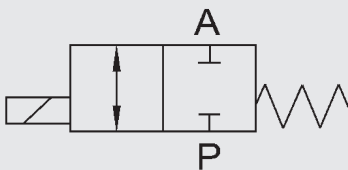


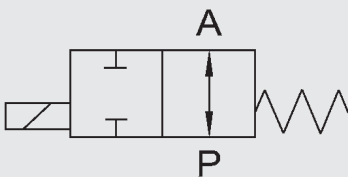
## 2/2-way coaxial valve plug-in CX02PM to CX05PM direct acting



### Switching function



NC (closed when de-energised)



NO (open when de-energised)

### Order data

- Nominal size
- Connection
- Function NC/NO
- Operating pressure
- Flow rate
- Fluid
- Fluid temperature
- Ambient temperature
- Supply voltage
- Number of module blocks

**!** If order details or application data are inaccurate or incomplete, there is a risk that the technical configuration of the valves may not be correct for the desired use. This may result in the physical and/or chemical characteristics of the materials or seals used not being adequate for the intended use.

### Model code

(also order example)

CX03PM 2/2 D C 2 10 040 012 24V

#### Designation

CX02PM = modular series CX02 Plug-in  
 CX03PM = modular series CX03 Plug-in  
 CX04PM = modular series CX04 Plug-in  
 CX05PM = modular series CX05 Plug-in

#### Ways

2/2 = number of ways

#### Control

D = direct

#### Switching function

C = NC - closed when de-energised  
 O = NO - open when de-energised \*

#### Body material

2 = brass (valve), aluminium (block)

#### Nominal size

10 = DN 10

#### Pressure range

020 = CX02PM >0 - 20 bar  
 040 = CX03PM >0 - 40 bar  
 064 = CX04PM >0 - 64 bar  
 100 = CX05PM >0 - 100 bar

#### Connection

014 = G $\frac{1}{4}$  - DN 10  
 038 = G $\frac{3}{8}$  - DN 10  
 012 = G $\frac{1}{2}$  - DN 10  
 034 = G $\frac{3}{4}$  - DN 10 \*

#### Supply voltage

24V = 24 V DC  
 230V = 230 V AC 40 - 60 Hz  
 Special voltages on request


\*optional


## Technical data

Control	2/2-way valve, direct acting	
Nominal size	DN 10	
Pressure range (see table)	CX02PM	PN 0 to PN 20
	CX03PM	PN 0 to PN 40
	CX04PM	PN 0 to PN 64
	CX05PM	PN 0 to PN 100
Connections	Valve:	G1/4 – G3/4
	Connecting blocks:	G1/2 – G1
Body material	Single valve:	Brass (stainless steel on request)
	Block	Aluminium
Valve seat (plastic on metal)	FKM	CX02PM / CX03PM / CX04PM
	PTFE	CX05PM
Seal material	Static:	FKM
	Dynamic:	PTFE
Back-pressure resistant	Up to 16 bar	
Vacuum	Leakage rate <10 <sup>-6</sup> mbar • l/s	
Media	Gaseous, liquid, contaminated	
Abrasive operating fluids	On request	
Flow direction	P → A	As marked
	A → P	max. 16 bar
Temperature of fluid	-10 °C to +100 °C	
Ambient temperature	-10 °C to +50 °C	
Mounting position	No orientation restrictions	
Limit switch	Inductive*	
Mounting	Mounting bracket *	

## Electrical part

Supply voltage	DC: 24 V
	AC: 230 V 40–60 Hz
Electrical part	DC: DC solenoid
	AC: DC solenoid with integrated rectifier
Connection	female connector to DIN EN 175301-803 Form A
	female connector with varistor and LED *
	female connector with M12x1 and LED *
	female connector to DESINA M12x1 and LED *
Voltage tolerance	±10% to VDE 0580
Duty cycle	100% duty cycle
Protection class	IP 65 when female connector is fitted

 The material specifications refer exclusively to the valve connection parts in contact with the medium.

 The valves are technically configured for specific media and applications. This may result in deviations from the general information given in the data sheet in terms of the design, sealing materials and specifications.

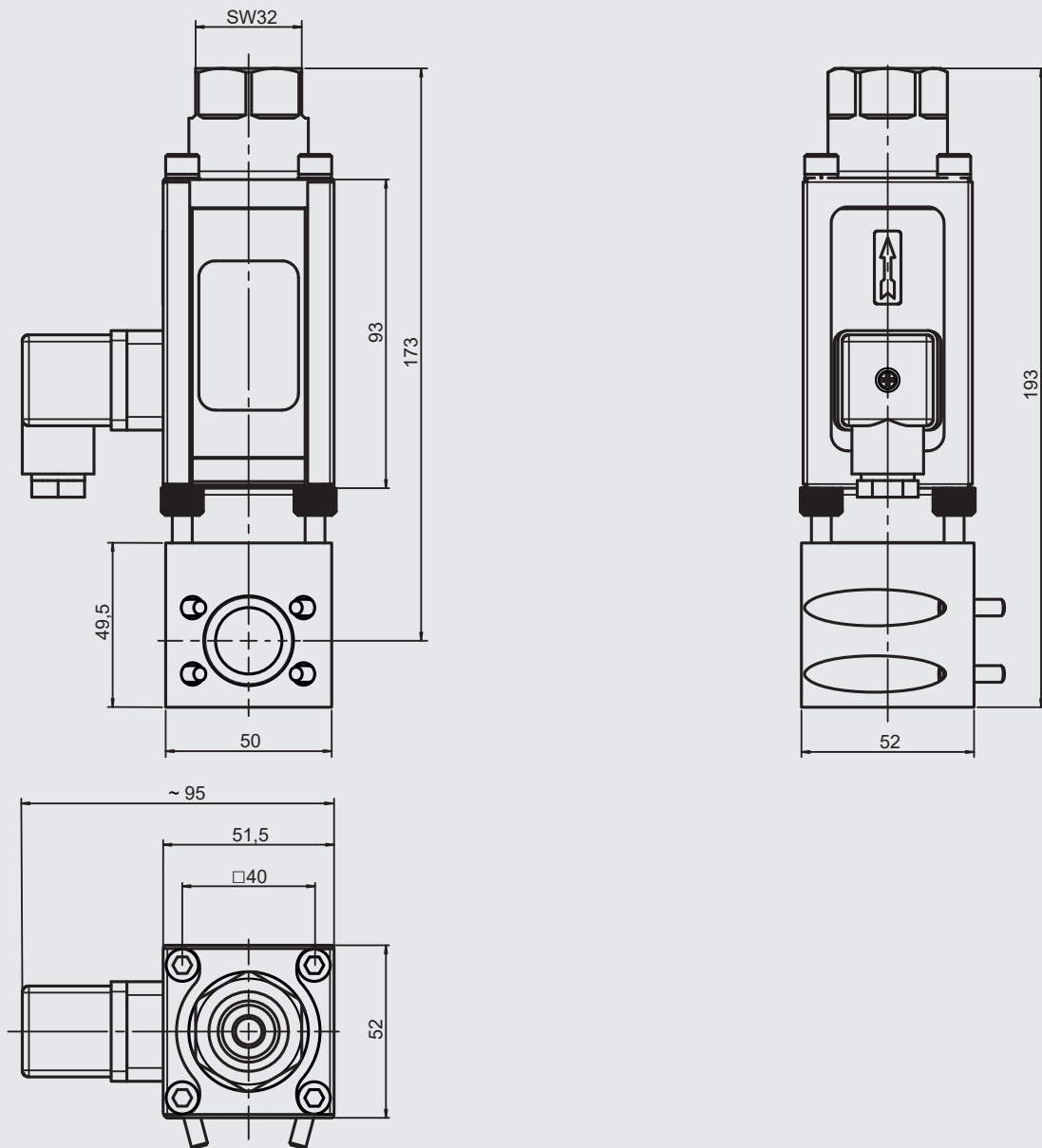
Series	DN [mm]	Pressure [bar]	Connection	Kv value [m <sup>3</sup> /h]	Power consumption [W]		Weight [kg]
					24V DC	230 V 50 Hz	
CX02PM	10	0 – 20	G1/4, G3/8, G1/2, G3/4 *	2.5	25	29	1.7
CX03PM	10	0 – 40	G1/4, G3/8, G1/2, G3/4 *	2.5	35	41	1.7
CX04PM	10	0 – 64	G1/4, G3/8, G1/2, G3/4 *	2.5	44	53	1.7
CX05PM	10	0 – 100	G1/4, G3/8, G1/2, G3/4 *	2.5	44	53	1.7

\* optional

## Dimensions





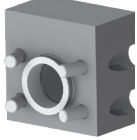
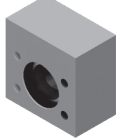
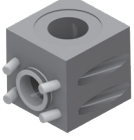
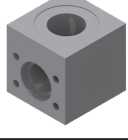

(Dimensions given in mm)

### CX plug-in



**NOTICE:** Additional block measurements can be found in the table "Dimensions" in brochure 6.177.

## Accessories

<b>Connection pieces</b>	Separating plate	
	Spacer	
<b>End caps</b>	End cap, right	
	End cap, left	
<b>Connecting blocks</b>	Connecting block, right version G1/2, G3/4, G1 DN10	
	Connecting block, left version G1/2, G3/4, G1 DN10	
	Connecting block, right angled version G1 on top DN10	
	Connecting block, left angled version G1 on top DN10	
<b>Mounting</b>	Mounting bracket	

We would be happy to discuss your requirements for further options and accessories.

### NOTICE

The information in this brochure relates to the operating conditions and applications described. For applications and/or operating conditions not described please contact the relevant technical department.

The operator is always responsible for determining the product suitability for the specific application. Quantified values for product characteristics are average values for a new product that undergo a time deterioration process.

Subject to technical modifications and errors.

**HYDAC Accessories GmbH**

Hirschbachstr. 2

**66280 Sulzbach/Saar**

Tel.: +49 (0)6897 - 509-01

Internet: [www.hydac.com](http://www.hydac.com)

E-mail: [accessories@hydac.com](mailto:accessories@hydac.com)