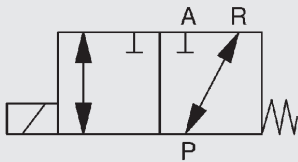
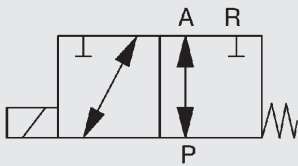


3/2-way coaxial valve CX EX direct acting

Switching function



NC (closed when de-energised)



NO (open when de-energised)

Ordering data

- Nominal size
- Connection
- NC / NO function
- Operating pressure
- Flow rate
- Media
- Temperature of medium
- Ambient temperature
- Supply voltage

! If order details or application data are inaccurate or incomplete, there is a risk that the technical configuration of the valves may not be correct for the desired use. This may result in the physical and/or chemical characteristics of the materials or seals used not being adequate for the intended use.

Model code

(also example order)

CX EX 3/2 D C 2 10 020 012 24V ...

Designation

CX EX = series CX EX

Ways

3/2 = number of ways

Control

D = direct

Switching function

C = NC - closed when de-energised

O = NO - open when de-energised

Body material

2 = brass

4 = 1.4305*

5 = 1.4571*

Valve sizes

10 = DN 10

15 = DN 15

Pressure range

016 = > 0 - 16 bar DN15

020 = > 0 - 20 bar DN10

Connection

014 = G $\frac{1}{4}$ DN 10

038 = G $\frac{3}{8}$ DN 10, DN 15

012 = G $\frac{1}{2}$ DN 10, DN 15

034 = G $\frac{3}{4}$ DN 15

Supply voltage

24V = 24 V DC

230V = 230 V AC 40–60 Hz

Options

see accessories

*optional

Technical specifications


Control	3/2-way valve, direct acting
Nominal size	DN 10, DN 15
Pressure range (see table)	PN 0 to PN 20
Connection (see table)	Female threaded connection
Body material	Brass, 1.4305*, 1.4571*
Seal material	Static: FKM Dynamic: PTFE Seat seal: FKM
Back-pressure resistant	up to max. 16 bar
Vacuum	Leakage rate < 10 ⁻⁶ mbar•l/s *
Media	Gaseous, fluid, high-viscosity, gelatinous, contaminated
Abrasive operating fluids	On request
Flow direction	P → A max. 20 bar A → P max. 16 bar
Temperature of medium	-20 °C to +40 °C
Ambient temperature	-30 °C to +40 °C
Mounting position	No orientation restrictions

Electrical part

Supply voltage	DC: 24 V AC: 230 V 50 Hz
Connection	Screw type conduit fitting M16 x 1.5
Voltage tolerance	±10 % to VDE 0580
Duty cycle	100 % duty cycle
Explosion protection	II 2G Ex em II T4 II 2 D td A21 IP65 T130 °C

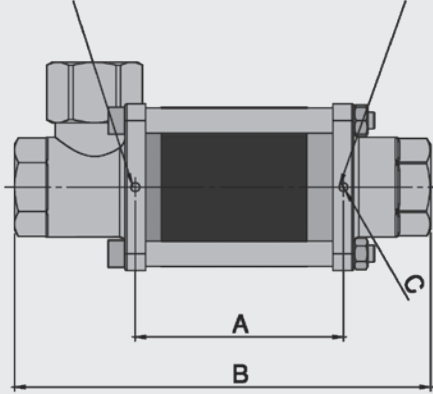
 The material information relates exclusively to valve connection parts that come into contact with medium. *optional

Series	DN [mm]	Pressure [bar]	Connection (Valve)	Kv value [m ³ /h]	Power consumption [W]		Weight [kg]
					24 V DC	230V 50Hz	
CX EX	10	0–20	G ¹ / ₄ , G ³ / ₈ , G ¹ / ₂	2.5	23	23	2.7
	15	0–16	G ³ / ₈ , G ¹ / ₂ , G ³ / ₄	5.6	30	30	4.4

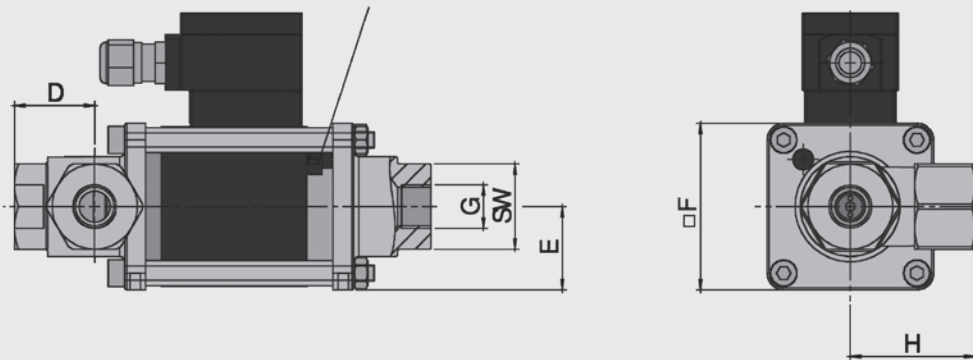
 The valves are technically configured for specific media and applications. This may result in deviations from the general information given in the data sheet in terms of the design, sealing materials and specifications.

Dimensions

Threaded holes for mounting bracket

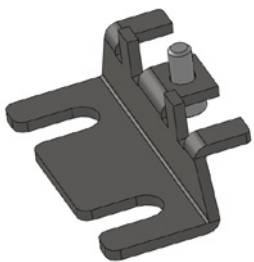


Grounding connection



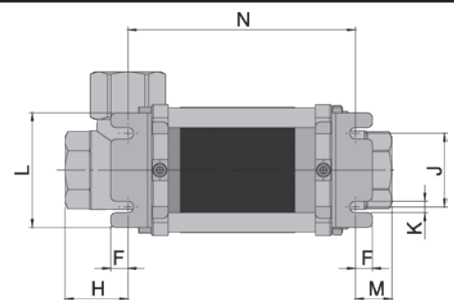
DN	G	SW	A	B	C	D	E	F	H
[mm]		(AF width)	[mm]	[mm]		[mm]	[mm]	[mm]	[mm]
10	G $\frac{1}{4}$, G $\frac{3}{8}$, G $\frac{1}{2}$	32	84	166.5	M4	32	32.5	65	37
15	G $\frac{3}{8}$, G $\frac{1}{2}$, G $\frac{3}{4}$	41	100	200	M5	38.5	40	80	60

Accessories



Mounting bracket
mechanical option = HW

DN	F	H	J	K	L	M	N
	[mm]	[mm]	[mm]	[mm]	[mm]	[mm]	[mm]
10	10	30.5	30	7	50	23.5	112.5
15	10.5	38.5	45	7	70	22.5	139



We would be happy to discuss your requirements for further options and accessories

NOTE

The information in this brochure relates to the operating conditions and applications described. For applications and operating conditions not described, please contact the relevant technical department.

The operator is always responsible for determining the product suitability for the specific application. Quantified values for product characteristics are average values for a new product that undergo a time deterioration process.

Subject to technical modifications and errors.

HYDAC Accessories GmbH

Hirschbachstr. 2

66280 Sulzbach/Saar

Tel.: +49 (0)6897 - 509-01

Fax: +49 (0)6897 - 509-1009

Internet: www.hydac.com

e-mail: accessories@hydac.com

