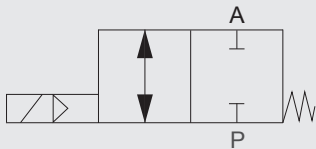


2/2-way coaxial valve

CX RM compact, pilot operated
Modular design

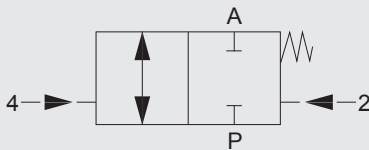
Switching function

Standard

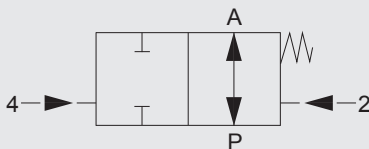


NC (closed when de-energised)

With external 3/2-way pilot valve



NC (closed when de-energised)



NO (open when de-energised)

Order data

- Nominal size
- Connection
- Function NC/NO
- Operating pressure
- Flow rate
- Medium
- Medium temperature
- Ambient temperature
- Supply voltage
- Number of module blocks

! If order details or application data are inaccurate or incomplete, there is a risk that the technical configuration of the valves may not be correct for the desired use. This may result in the physical and/or chemical characteristics of the materials or seals used not being adequate for the intended use.

Model code

(also example order)

CX RM 2/2 F C 2 08 040 038 PV ...

Designation

CX RM= modular series CX RM

Ways

2/2 = number of ways

Control

F = external pilot

Switching function

C = NC – closed when de-energised

O = NO – open when de-energised*

Body material

2 = brass

Nominal size

08 = DN 08

Pressure range

040 = > 0 - 40 bar

Connection

038 = G $\frac{3}{8}$

Pilot valve

PV = 3/2-way pilot valve

Options

see accessories

*optional

Technical specifications

Control	2/2-way valve, pilot operated	
Nominal size	DN 08	
Pressure range	PN 0 to PN 40	
Connections	Valve: G ^{3/8}	Block: G1
Body material	Brass	
Seal material	Static:	FKM
	Dynamic:	PTFE
	Seat seal:	FKM
Back-pressure resistant	max. 40 bar	
Vacuum	Leakage rate < 10 ⁻⁶ mbar•l/s *	
Media	Emulsions, oils, neutral gases (other media on request)	
Flow direction	P → A max. 40 bar	A → P max. 40 bar
Temperature of medium	-10 °C to +100 °C	
Ambient temperature	-10 °C to +50 °C	
Actuating part	Piston with return spring	
Mounting position	No orientation restrictions	
Fixing	Mounting bracket*	

Pneumatic part (pilot valve)

Control	3/2-way pilot valve
Mounting pattern	Flange
Control pressure	3 to 10 bar
Connection, control air	Connector for hose with external diameter 6 mm
Air requirement	approx. 7 cm ³ / stroke
Switching times	Opening/closing 21–40 ms depending on control pressure
Switching function	NC closed when de-energised

Optional external 3/2-way pilot valve

Ports, control air	M5
Switching function	NC/NO


Electrical part (pilot valve)

Supply voltage	DC: 24 V AC: 230 V 40–60 Hz Special voltages on request
Electrical part	DC: DC linear solenoid AC: DC linear solenoid with integrated rectifier
Connection	Connector plug to industry standard Form B for AC operation with integrated rectifier
Voltage tolerance	±10 % to VDE 0580
Duty cycle	100 % duty cycle
Protection class	IP 65 when connector plug is fitted

 The material specifications refer exclusively to the valve connection parts in contact with the medium. *optional

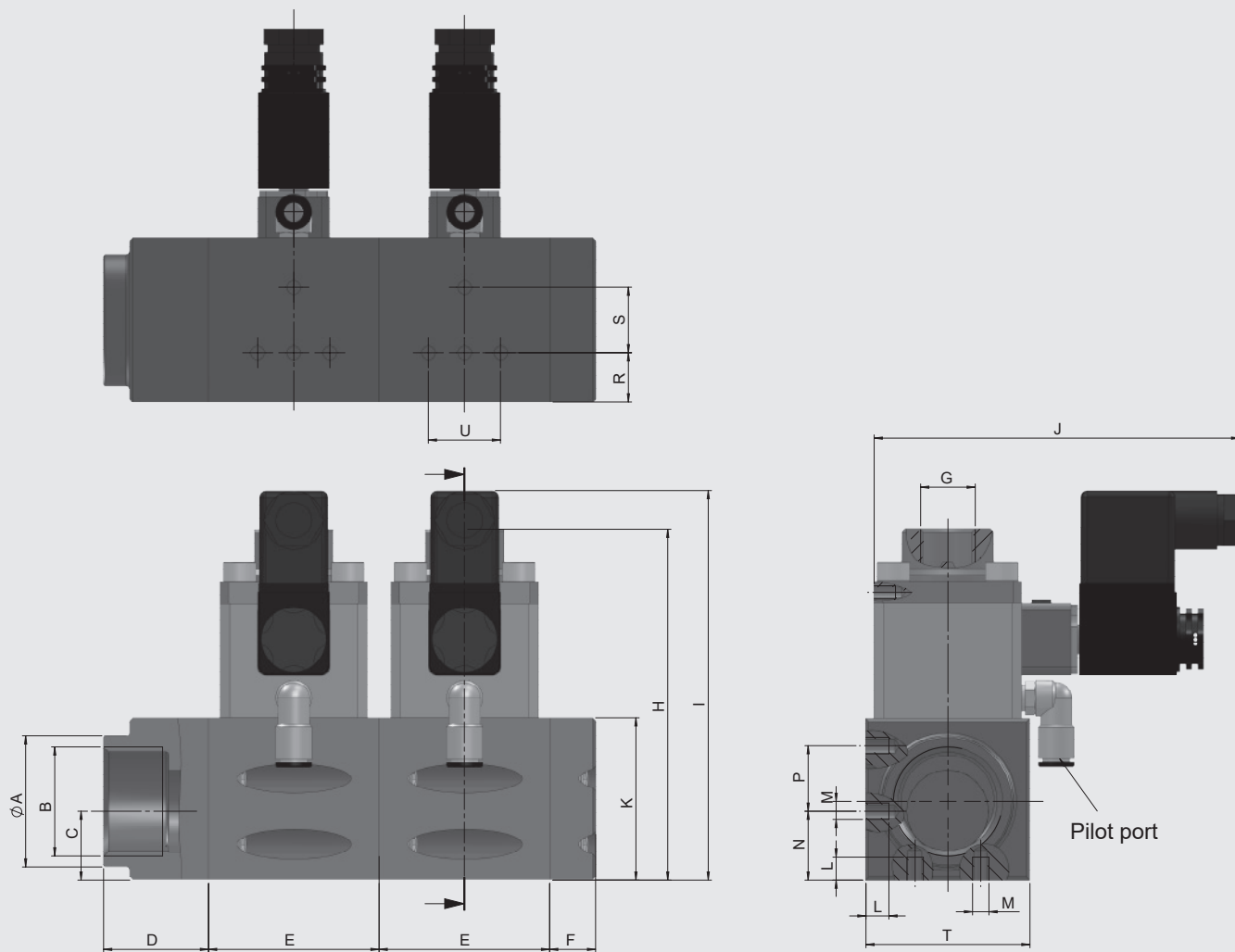
Series	DN [mm]	Pressure [bar]	Connection	Kv value [m ³ /h]	Power consumption [W]		Weight [kg]
					24 V DC	230 V 50 Hz	
CX RM	08	0 - 40	G ^{3/8}	1.7	6	9.2	0.7

NOTICE: Inserting a maintenance unit upstream will increase the service life of the unit.

 The valves are technically configured for specific media and applications. This may result in deviations from the general information given in the data sheet in terms of the design, sealing materials and specifications.

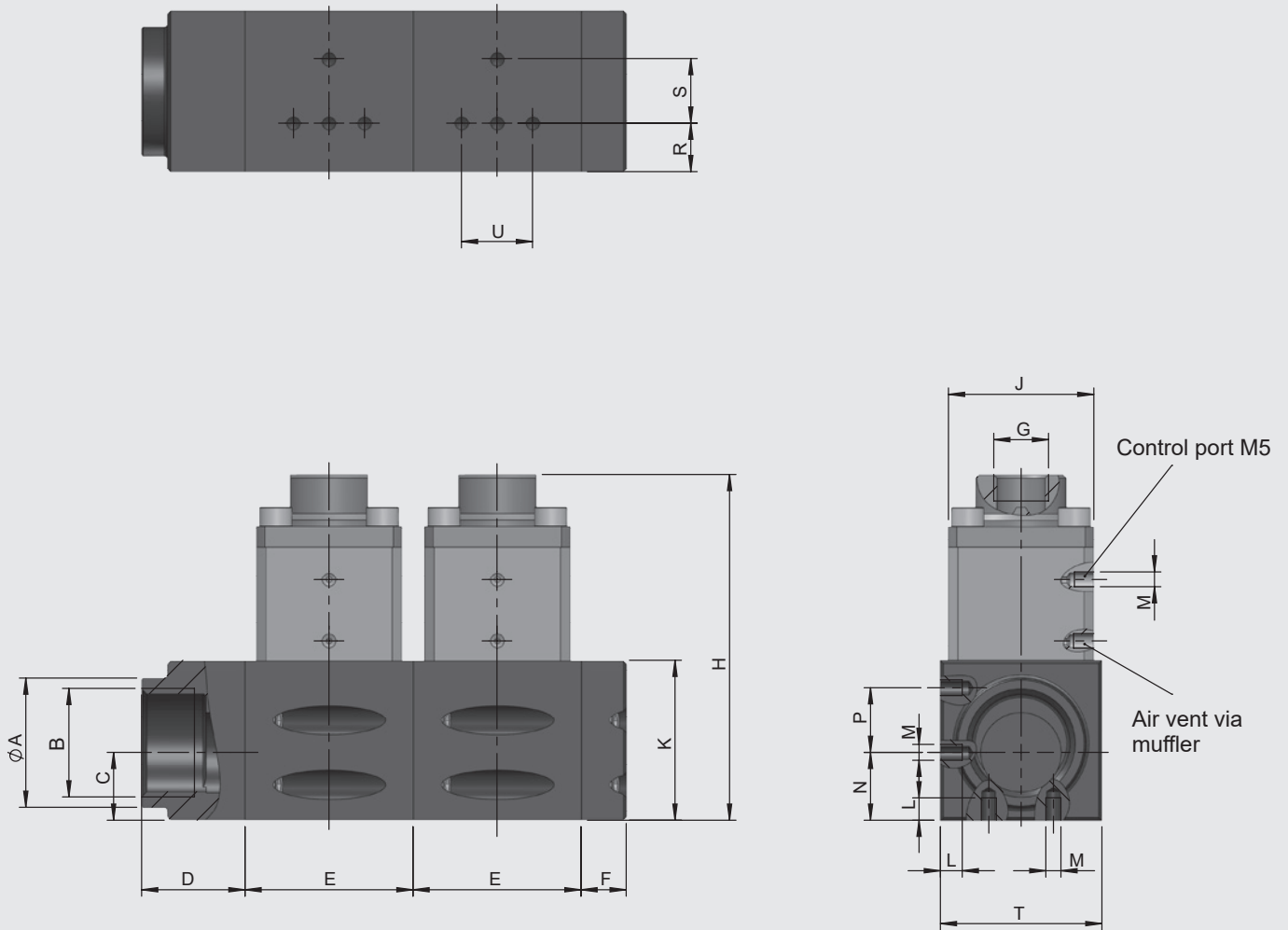
Dimensions

CX RM compact with 3/2-way pilot valve



DN	A [mm]	B	C [mm]	D [mm]	E [mm]	F [mm]	G	H [mm]	I [mm]	J [mm]	K [mm]	L [mm]	M	N [mm]	P [mm]	R [mm]	S [mm]	T [mm]	U [mm]
8	40	G1	21	32	52	14	G $\frac{3}{8}$	107	118	115	49.5	7	M5	21	20	15	20	50	22

CXR compact with control-air ports for external 3/2-way pilot valve




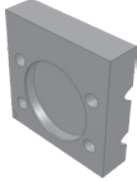


DN	A [mm]	B	C [mm]	D [mm]	E [mm]	F [mm]	G	H [mm]	I [mm]	J [mm]	K [mm]	L [mm]	M	N [mm]	P [mm]	R [mm]	S [mm]	T [mm]	U [mm]
8	40	G1	21	32	52	14	G $\frac{3}{8}$	107	-	45	49.5	7	M5	21	20	15	20	50	22

Notice: Mounting brackets are not included with the standard model.

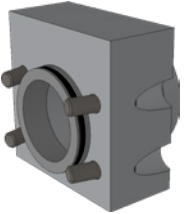
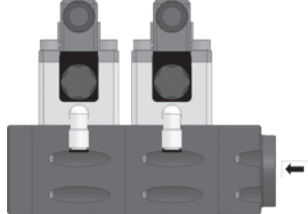
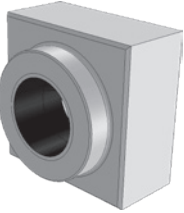
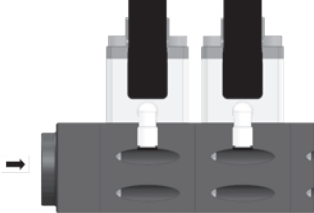
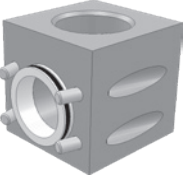
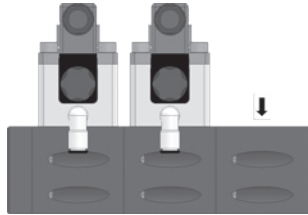
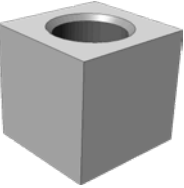
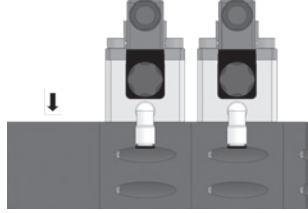
Ordering code

DN	Version	Switching function	Pressure [bar]	Connection	Model code
08	for 3/2-way pilot valve	NC	0–40	G $\frac{3}{8}$	CX RM-2/2-F/C-2/08/040/038/PV-230V-WS-1X CX RM-2/2-F/C-2/08/040/038/PV-24V-WS-1X
08	for external 3/2-way pilot valve	NC	0–40	G $\frac{3}{8}$	CX RM-2/2-F/C-2/08/040/038-1X-SA
08	for external 3/2-way pilot valve	NO	0–40	G $\frac{3}{8}$	CX RM-2/2-F/O-2/08/040/038-1X-SA

Accessories


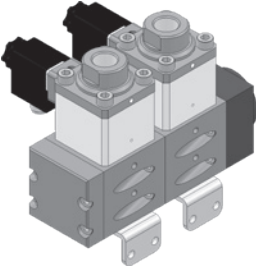

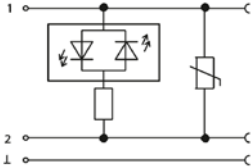
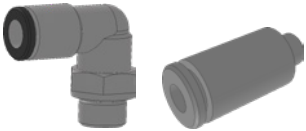

Joining parts		End caps	
	Separating plate		End cap, right
	Spacer		End cap, left

Connectors

	Connecting block, right	
	Connecting block, left	
	Connecting block, right angled version G1, outlet on top	
	Connecting block, left angled version G1, outlet on top	

We would be happy to discuss your requirements for further options and accessories

Further options

	<p>Mounting bracket mechanical option = HW</p>	
	<p>Connector plug with LED electrical option = LED</p>	
	<p>Screwed fittings</p>	
	<p>Special explosion protection II 2G Ex m II T4 II 3D IP65 T130 °C electrical option = EX</p>	<p>Notice: The operating pressure is reduced by approx. 20 % on the Ex version.</p>

We would be happy to discuss your requirements for further options and accessories.

NOTE

The information in this brochure relates to the operating conditions and applications described. For applications and operating conditions not described, please contact the relevant technical department.

The operator is always responsible for determining the product suitability for the specific application. Quantified values for product characteristics are average values for a new product that undergo a time deterioration process.

Subject to technical modifications and errors.

HYDAC Accessories GmbH

Hirschbachstr. 2

66280 Sulzbach/Saar

Tel.: +49 (0)6897 - 509-01

Fax: +49 (0)6897 - 509-1009

Internet: www.hydac.com

e-mail: accessories@hydac.com