

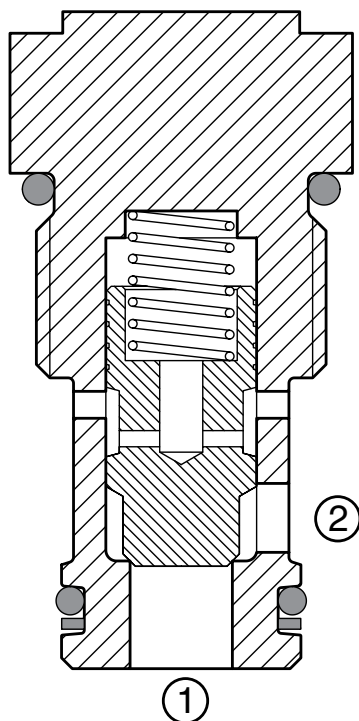
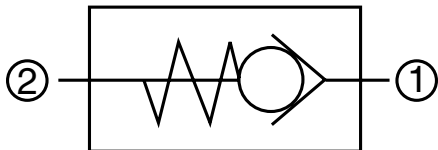
CHECK & LOAD CONTROL VALVES

RV12A-01

Check Valve, Poppet Type

Up to 31 gpm (120 l/min) • 6000 psi (420 bar)

Hydraulic Symbol



Description

A screw-in cartridge, poppet type check valve for use as a blocking or load holding device.

Operation

The RV12A allows flow from port 1 to port 2, while normally blocking flow in the opposite direction. The valve remains closed by bias spring until sufficient pressure is applied at port 1 at which time the poppet lifts off the seat and allows flow from port 1 to port 2.

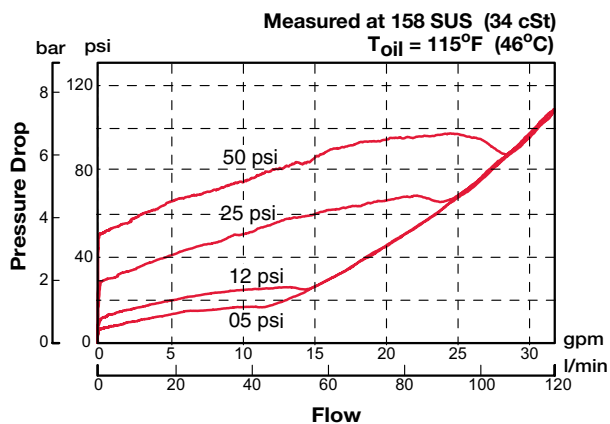
Features

- Hardened closing element to ensure extended service life and low leakage
- Multiple bias spring options for back pressure application flexibility
- Fast closing and seating
- Low pressure drop
- Fully guided check
- All external surfaces zinc-plated
- Industry common cavity

Specifications

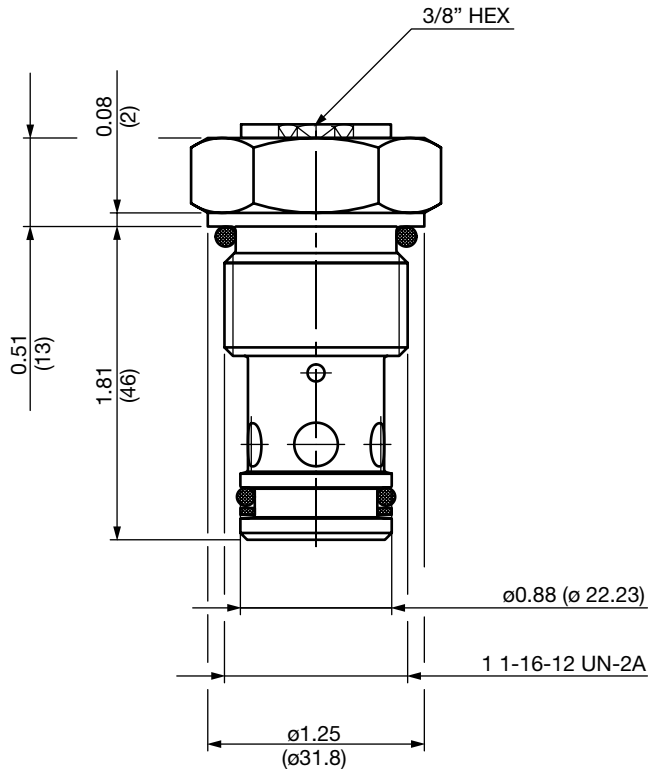
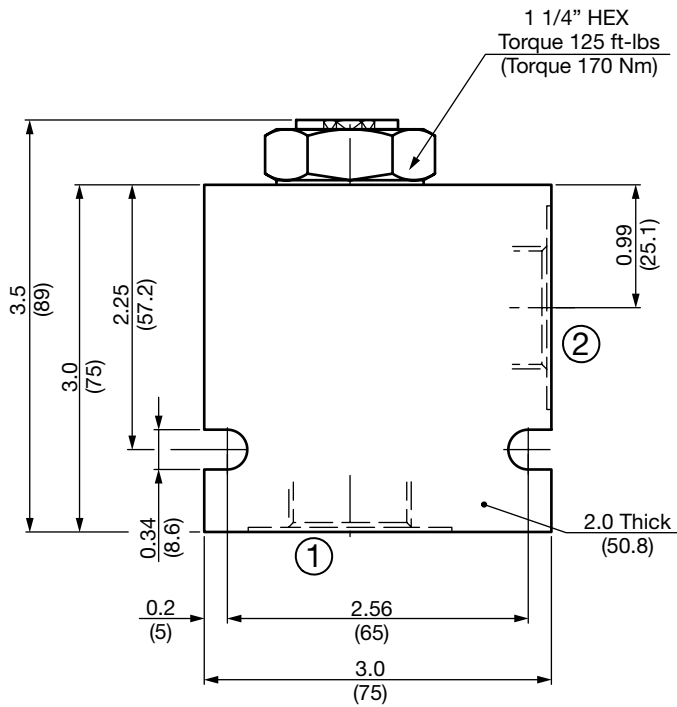
Operating Pressure	6000 psi (420 bar)
Nominal Flow	31 gpm (120 l/min)
Internal Leakage	<2 drops/min. at 6000 psi (0.10 cc/min at 420 bar)
Standard Cracking Pressures	5 psi (0.35 bar) 12 psi (0.80 bar) 25 psi (1.70 bar) 50 psi (3.40 bar)
Fluid Operating Temp. Range	-4° to 248°F (-20° to +120°C) (Consult factory for usage at temp. outside range.)
Fluid Compatibility	Mineral-based or synthetics with lubricating properties
Viscosity	50 to 2000 SUS (7.4 to 420 cSt)
Filtration	21/19/16 or cleaner (per ISO 4406). Use with filter rated $\beta_{10} \geq 200$.
Installation	No orientation restrictions
Cavity	FC12-2 (see Line Bodies & Cavities section)
Cavity Tools	Rougher: 02580667 Finisher: 02580668
Cartridge Weight	0.44 Lbs. (0.20 kg)
Cartridge Material	Steel with hardened work surfaces. Zinc-plated exposed surfaces. Buna N or Viton® o-rings. PTFE back-up rings.
Seal Kits	Buna-N P/N: 03071298 Viton® P/N: 03071299

Performance



CHECK & LOAD CONTROL VALVES

Dimensions



All measurements in inches (mm).
Subject to technical modifications

Model Code

RV12A-01-C-N-05

Valve Model

Body & Ports

- C = Cartridge only
- AS12 = SAE-12 Ports, aluminum Body
- SS12 = SAE-12 Ports, steel Body

Seals

- N = Buna-N
- V = Viton®

Cracking Pressure

- 05 = 5 psi (0.35 bar)
- 12 = 12 psi (0.80 bar)
- 25 = 25 psi (1.70 bar)
- 50 = 50 psi (3.40 bar)

Standard Line Bodies*

Code	Part No	Material	Pressure Rating	Weight
FH122-AS12	03053845	Aluminum, anodized	3500 psi (245 bar)	1.20 lb (0.55 kg)
FH122-SS12	03053772	Steel, Zinc plated	6000 psi (420 bar)	3.56 lb (1.62 kg)

*Please refer to Line Bodies & Cavities section for details