

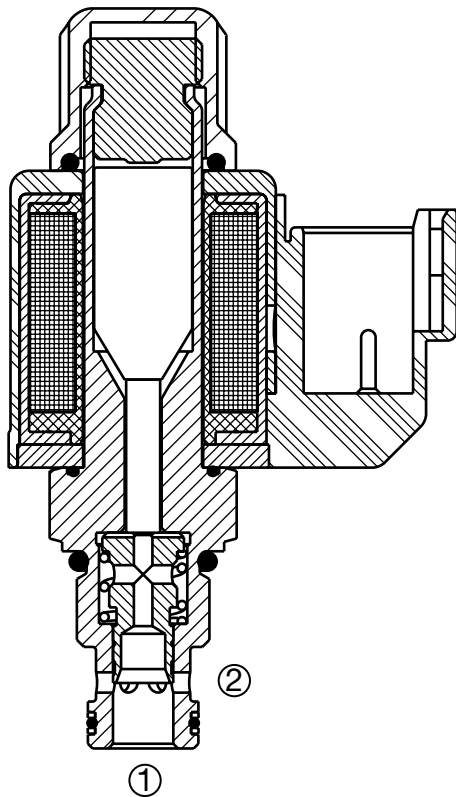
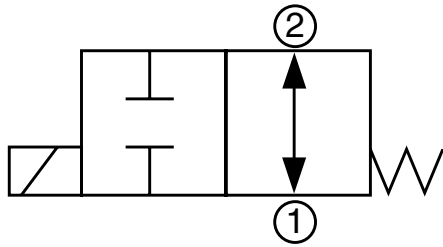
SOLENOID VALVES

WK06V-01

Spool Type, Normally Open, Direct Acting

Up to 4 gpm (15.2 lpm) • 5000 psi (350 bar)

Hydraulic Symbol



Description

A screw-in cartridge, solenoid operated, 2-way, 2 position, normally open, direct acting, spool type, intended for use as a bi-directional flow blocking valve.

Operation

When de-energized the WK06V allows bi-directional flow. When energized the spool shifts and blocks flow in both directions.

Operation of Manual Override Option: To override, push and hold the override button. The override is not detented. The manual override option is intended for emergency use, not for continuous duty operation.

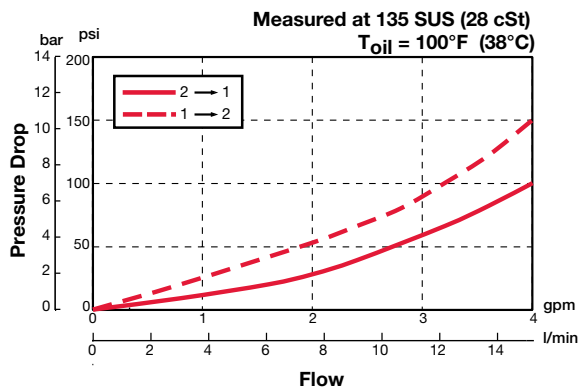
Features

- Push type manual override button, protected by rubber cap

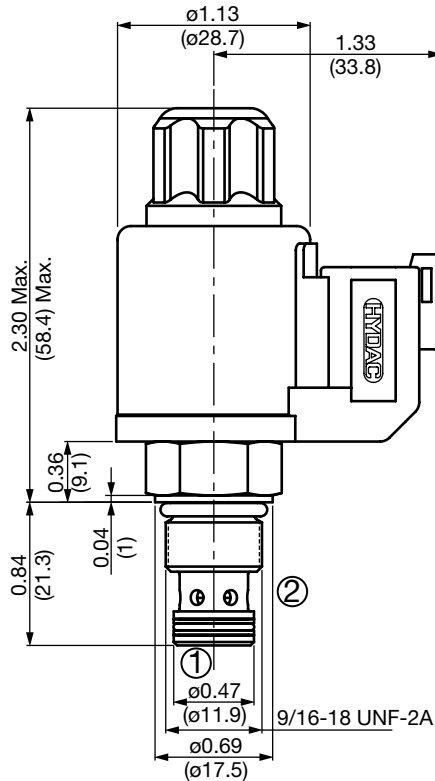
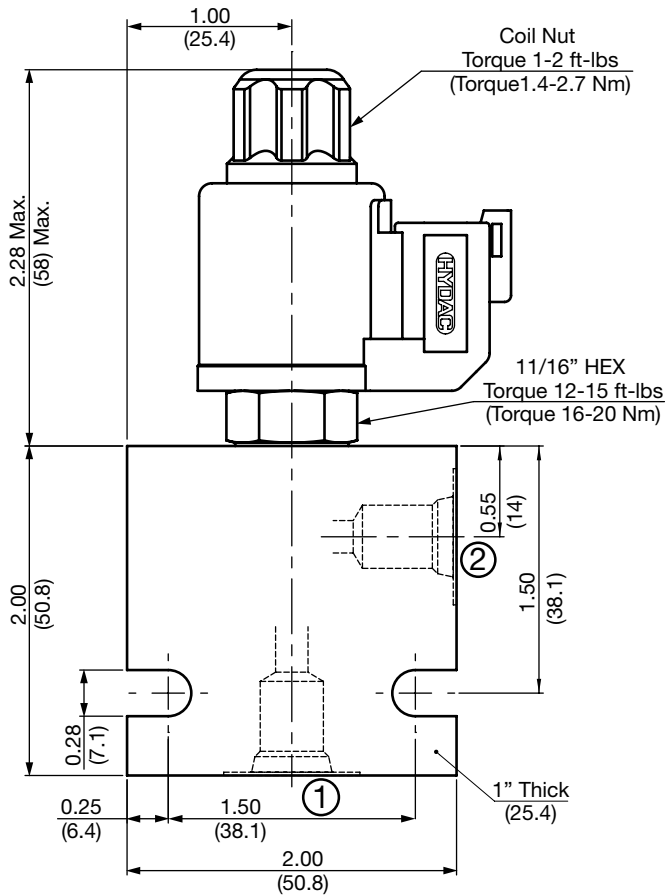
Specifications

Operating Pressure	5000 psi (350 bar)
Nominal Flow	See Operating Limits
Internal Leakage	5.5 cu in/min at 3600 psi and 135 SUS (90cc/min at 248 bar at 28cSt)
Fluid Operating Temp. Range	-20° to 248°F (-29° to 120°C) (Consult factory for usage at temp. outside range.)
Ambient Temperature Range	-20° to 140°F (-29° to 60°C)
Coil Duty Rating	Continuous from 85% to 115% of nominal voltage
Current Draw @ 68°F (20°C)	984 mA at 12VDC; 492 mA at 24VDC
Min. Pull-in Current to Operate Valve	80% of nominal amperage
Typical Response Time (Varies with Pressure and Flow)	Energized 50ms De-energized 35ms
Fluid Compatibility	Mineral-based or synthetics with lubricating properties
Viscosity	50 to 2000 SUS (7.4 to 420 cSt)
Filtration	21/19/16 or cleaner per (ISO 4406)
Installation	No orientation restrictions
Cavity	FC06-2 (see Line Bodies & Cavities section)
Cavity Tools	Rougher: 02582046 Finisher: 02582047
Cartridge Weight	0.17 lb (0.08 kg)
Coil Weight	0.19 lb (0.09 kg)
Cartridge Material	Steel with hardened work surfaces. Zinc plated exposed surfaces. Buna N or Viton® o-rings. Solid thermoplastic polyester back-up rings.
Coil Material	Class N, 200°C high temperature magnet wire, steel shell, polyester encapsulation.
Seal Kits	Buna-N FS062-N P/N: 02610184 Viton® FS062-V P/N: 02610185

Performance



Dimensions



All measurements in inches (mm).
Subject to technical modifications

Model Code

WK06V-01 M-C-N-24 DN

Valve Model

Override Option

blank = No manual override
M = Manual override, push type

Body & Ports

C = Cartridge only
AS4 = SAE-4 Ports, aluminum body
SS4 = SAE-4 Ports, steel body

Seals

N = Buna-N
V = Viton®

Coil Voltage

0 = No coil, cartridge only

DC 12 = 12 VDC
24 = 24 VDC

AC 115 = 105 VAC (only available with connector DG)

230 = 205 VAC (only available with connector DG)

(All model 32-1329 coils are DC. AC models require an external diode bridge mounted outside the coil)**

Coil Connector

DC DG = DIN 43650 Form B (IP65 Rated)**

DL = Leadwires (2) 18" long (46 cm) AWG18, TYPE UL 1815 (IP69K Rated)*

DN = Deutsch DT04-2P intergral molded (IP69K Rated)*

Use mating plug DIN 43650 form B without diode bridge for DC voltages P/N 02600570

Use mating plug DIN 43650 form B w/diode bridge for AC voltages P/N 02600582

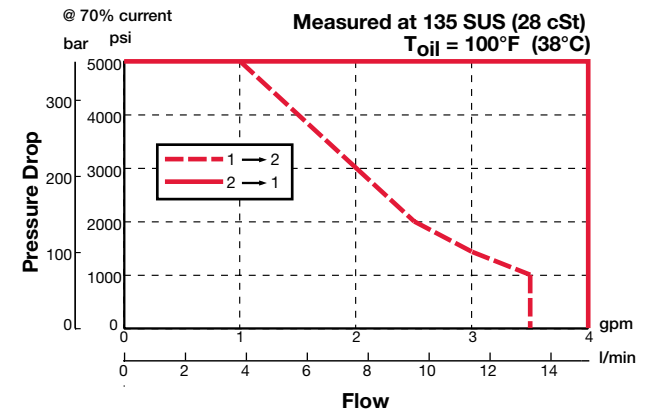
Coil Model 32-1329

For other coil connector types consult factory

**Mating Plugs sold separately

*Coils with internal Transient Suppression diode are available, consult factory.

Operating Limits



Standard Line Bodies*

Code	Part No	Material	Pressure Rating	Weight
FH062-AS4	02600491	Aluminum, anodized	3500 psi (245 bar)	0.34 lbs (0.15 kg)
FH062-SS4	02600490	Steel, zinc plated	6000 psi (420 bar)	1.0 lbs (0.45 kg)

*Please refer to Line Bodies & Cavities section for details