

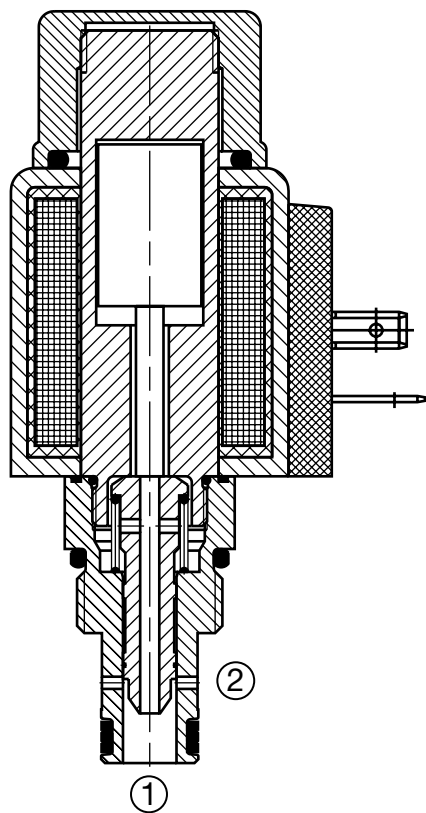
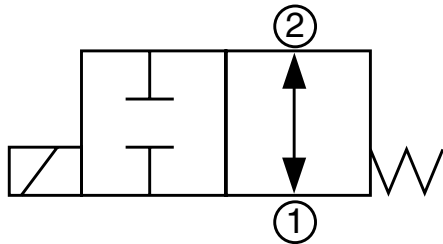
# SOLENOID VALVES

## WK08V-01

### Spool Type, Normally Open, Direct Acting

Up to 5 gpm (19 l/min) • 5000 psi (350 bar)

#### Hydraulic Symbol



#### Description

A screw-in cartridge, solenoid operated, 2-way, 2 position, normally open, direct acting, spool type, intended for use as a bi-directional flow blocking valve.

#### Operation

When de-energized the WK08V allows bi-directional flow. When energized the spool shifts and blocks flow in both directions.

**Operation of Manual Override Option:** To override, push and hold the override button. The override is not detented. The manual override option is intended for emergency use, not for continuous duty operation.

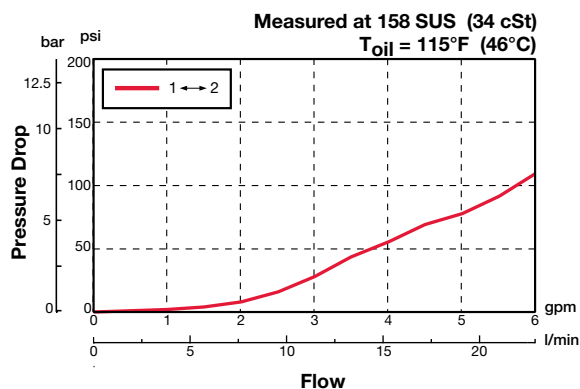
#### Features

- Push type manual override button, protected by rubber cap

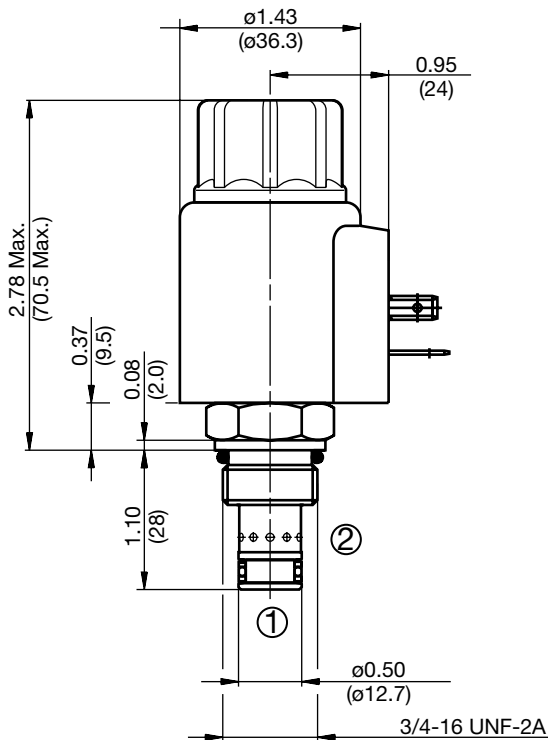
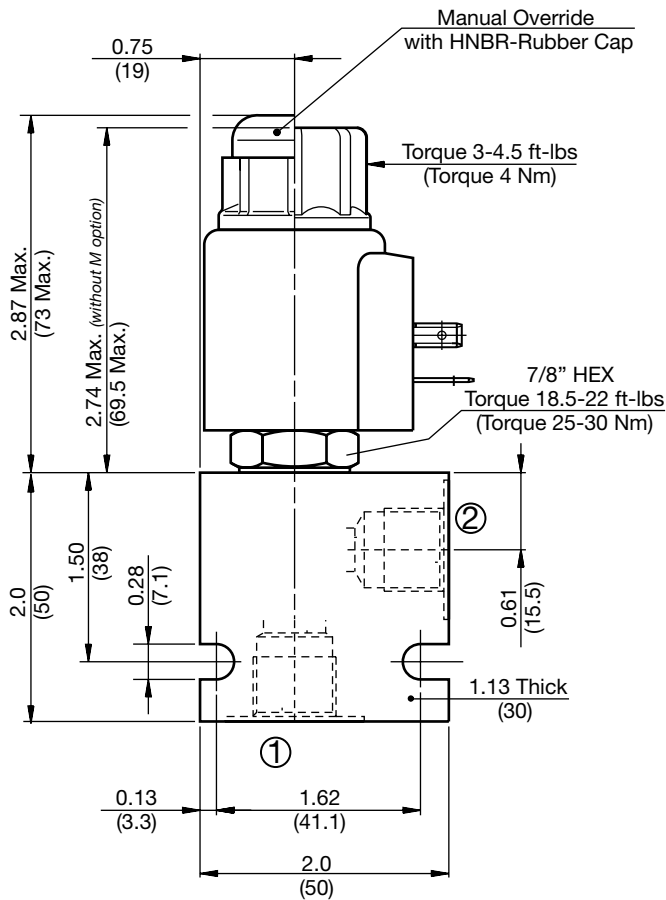
#### Specifications

Operating Pressure	5000 psi (350 bar)
Nominal Flow	5 gpm (19 l/min)
Internal Leakage	5.5 cu in/min. at 3000 psi and 158 SUS (90 cc/min at 210 bar and 34 cSt)
Fluid Operating Temp. Range	-4° to 248°F (-20° to 120°C) (Consult factory for usage at temp. outside range.)
Ambient Temperature Range	-4° to 140°F (-20° to 60°C)
Coil Duty Rating	Continuous from 85% to 115% of nominal voltage
Current Draw @ 68°F (20°C)	1.5 A at 12VDC; 0.8 A at 24VDC
Min. Pull-in Voltage @ 68°F (20°C)	85% of nominal @ 5000 psi (350 bar)
Fluid Compatibility	Mineral-based or synthetics with lubricating properties
Viscosity	50 to 2000 SUS (7.4 to 420 cSt)
Filtration	21/19/16 or cleaner (per ISO 4406). Use with filter rated $\beta_{10} \geq 200$ .
Installation	No orientation restrictions
Cavity	FC08-2 (see <i>Line Bodies &amp; Cavities</i> section)
Cavity Tools	Rougher: 02580090 Finisher: 02580091
Cartridge Weight	0.38 Lbs. (0.17 kg)
Coil Weight	0.42 Lbs. (0.19 kg)
Cartridge Material	Steel with hardened work surfaces. Zinc-plated exposed surfaces. Buna N or Viton® o-rings. PTFE back-up rings.
Coil Material	Class N high temperature magnet wire, steel shell, polyamid encapsulation.
Seal Kits	Buna-N Viton®
	FS082-N P/N: 03033920 FS082-V P/N: 03051756

#### Performance



## Dimensions



All measurements in inches (mm).  
Subject to technical modifications

## Model Code

**WK08V-01 M-C-N-24 DN**

### Valve Model

### Override Option

- blank = No manual override
- M = Manual override, push type

### Body & Ports

- C = Cartridge only
- AS6 = SAE-6 Ports, aluminum body
- SS6 = SAE-6 Ports, steel body

### Seals

- N = Buna-N
- V = Viton®

### Coil Voltage

- 0 = No coil, cartridge only

### DC

- 12 = 12 VDC
- 24 = 24 VDC
- 36 = 36 VDC
- 110 = 110 VDC (only available with connector DG)

### AC

- 24 = 24 VAC
- 115 = 115 VAC (AC coils internally full wave rectified)
- 230 = 230 VAC

### Coil Connector

- DC DG = EN 175301-803-A
- DS = Dual spade (SAEJ858a)\*
- DL = Leadwires (2) - 18" long (46 cm)\*
- DW = WeatherPak™ on leadwires - 9.5" long (24 cm)\*
- DN = Deutsch™ DT04-2P, molded, axial (IP69K Rated)\*
- DT = Amp Junior Timer™, molded, radial mount\*

- AC AG = EN 175301-803-A

### Coil Model 40-1836

For other coil connector types consult factory

\*Coils with internal diode are available, consult factory.

## Standard Line Bodies\*

Code	Part No	Material	Pressure Rating	Weight
FH082-AS6	03011409	Aluminum, anodized	3500 psi (245 bar)	0.34 lbs (0.15 kg)
FH082-SS6	00560917	Steel, Zinc plated	6000 psi (420 bar)	1.0 lbs (0.45 kg)

\*Please refer to Line Bodies & Cavities section for details