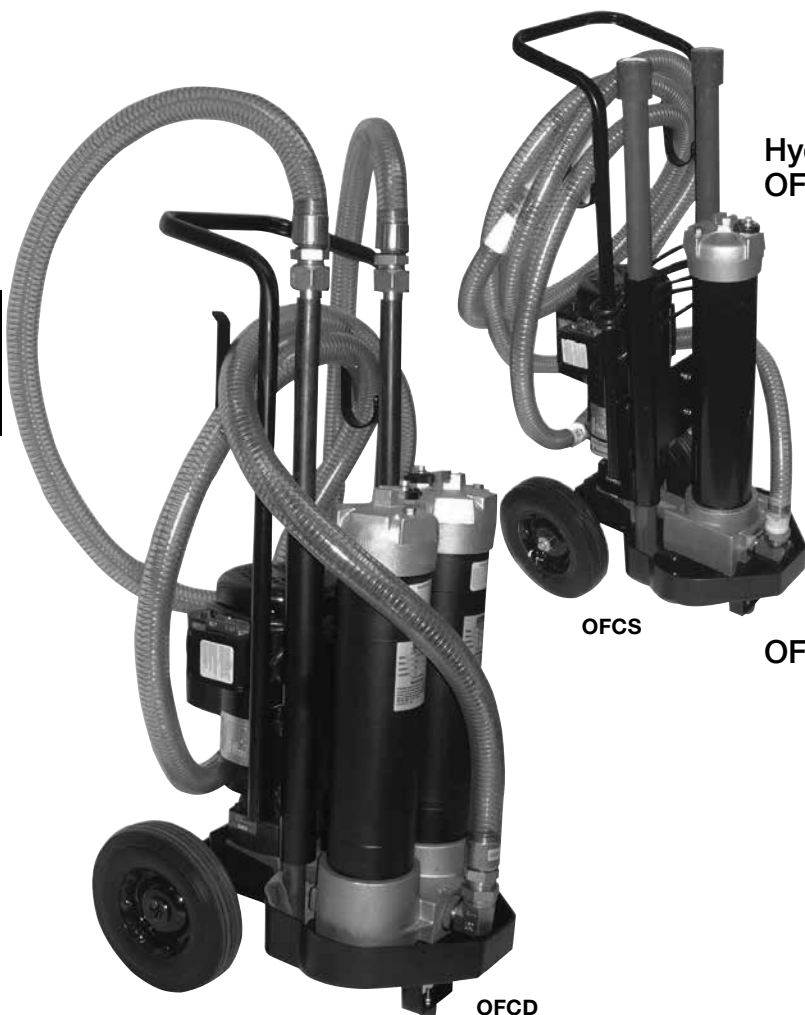


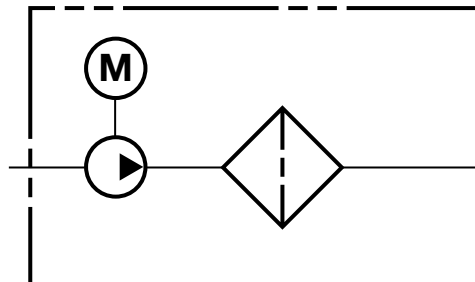
OFFLINE FILTRATION SYSTEMS

OFCS & OFCD Series

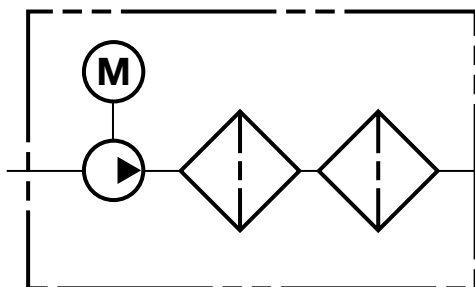
Single & Dual Stage Filtration Systems



Hydraulic Schematics OFCS Series



OFCD Series



Description

The OFCS and OFCD Series are compact, self-contained filtration system equipped with high efficiency, high capacity elements capable of removing particulate contamination and/or water quickly, conveniently and economically. It is perfect for cleaning up existing systems as well as for prefiltering new fluids, since new fluids often have contamination levels significantly higher than that recommended for most hydraulic systems.

HY-TRAX manual fluid sampling system: HYDAC now offers the HY-TRAX manual fluid sampling system as an additional option allowing for real-time fluid condition monitoring. ISO particle counts are visually displayed on the CS1000. Users will now know when they have reached their desired ISO contamination levels.

CSI-C-11: HYDAC also offers the CSI-C-11 Communication Interface for WLAN or LAN transmission of data and data storage capabilities.

The OFCS single filtration unit can remove either water or particulate contamination. The OFCD dual filtration unit can be used to remove both water and particulate contamination, or for staged particulate contaminant removal.

Features

- Modular base eliminates hoses between components and minimizes leakage
- Base-ported filter provides easy element service from the top cap
- Ten-foot hose and extension tubes included (1" dia. for 7 gpm; 1.25" dia. for 14 gpm)
- Drip pan catches oil before it falls to the ground
- Integral suction strainer protects pump

Applications

- Supplementing continuous filtration by system filters
- Cleaning up a hydraulic system following component replacement
- Filtering new fluid before it is put into service
- Transferring fluid from storage tanks and drums to system reservoirs

Technical Specifications

Flow Rating	7 gpm max (26.5 lpm) or 14 gpm max (53 lpm)	
Maximum Viscosity	1000 SUS (216 cSt) Higher viscosity version available.	
Hose Pressure Rating	30 psig (2.0 bar) @ 150°F (65.6°C) Full vacuum @ 150°F (65.6°C)	
Maximum Operating Temperature	-20° to 150°F (-29° to 65°C)	
Bypass Valve Setting	Cracking: 30 psi (2 bar)	
Material	Manifold and cap: Cast aluminum Element case: Steel	
Compatibility	All petroleum based hydraulic fluid. Contact factory for use with other fluids.	
Motor	115 V AC Single phase 3/4 hp (7 gpm) or 1-1/2 hp (14 gpm)	
Weight - lbs (kg)	OFCS	OFCD
7 gpm	190 (86)	220 (100)
14 gpm	197 (89)	227 (103)

Model Code

OFCD - 27 - BN 10 - BN 10 - B - A - 14 - G2187

Series

- OFCS = Single Filter System
- OFCD = Dual Filter System

Pneumatic Option

- (omit) = Electric motor (standard)
- P** = **Pneumatic motor only**

Element Length

- 1-09 = One 9" Element Supplied
- 2-09 = Two 9" Elements Supplied (must be same micron rating)
- 3-09 = Three 9" Elements Supplied (must be same micron rating)
- 18 = One 18" Element Supplied
- 27 = One 27" Elements supplied

Filter Media

- BN = Betamicon® Low Collapse
- AM* = Aquamicon® Water Removal
- G = Betamicon GeoSeal®

Filtration Rating (BN only - AM has no rating) (microns)

- 3 } Betamicon® (BN/HC)
- 5 } Absolute Filtration Rating
- 10 } ($\beta_{x(c)} \geq 1000$)
- 20 }

Filter Media (OFCD only)

- BN = Betamicon® Low Collapse
- AM* = Aquamicon® Water Removal
- G = Betamicon GeoSeal®

Filtration Rating (BN only - AM has no rating) (microns) (OFCD only)

- 3 } Betamicon® (BN/HC)
- 5 } Absolute Filtration Rating
- 10 } ($\beta_{x(c)} \geq 1000$)
- 20 }

Seals

- B = Buna N
- V = FPM

Voltage

- (omit) = 115 VAC 60HZ/1Phase
- A = 230 VAC 60HZ/3Phase
- B = 460 VAC 60HZ/3Phase
- C = 220 VAC 50HZ/1Phase
- D = 230 VAC 60HZ/1Phase

Pump Size

- 07 = 7 gpm
- 14 = 14 gpm

Options

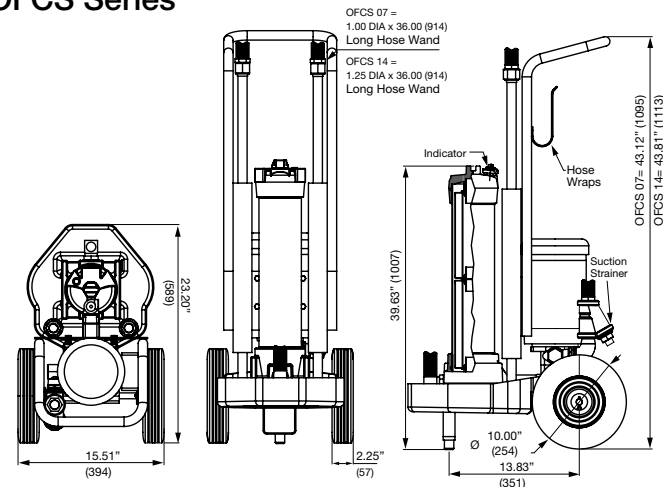
- G2185 = for 14 gpm unit; up to 2500 SUS fluids; flow reduced to ~10 gpm
- G2187 = for 7 gpm unit; up to 2500 SUS fluids; flow reduced to ~3 gpm
- PC = HyTRAX Contamination Monitoring Unit (will work with G2185 option for oils up to 2500SUS)
Note: Particle Counter Option only available in 115V / 60 Hz power supply
- CSI = CSI-C-11 Sensor Interface Option for data acquisition (only with PC option)
- CSI-W = CSI-C-11 Sensor Interface Option for data acquisition with AS1008 Water Saturation Sensor (only with PC option)

*Aquamicon media should be in the first filter housing followed by the BN media in the second housing.
For replacement element part numbers, please see Section E - REPLACEMENT ELEMENTS of this catalog.

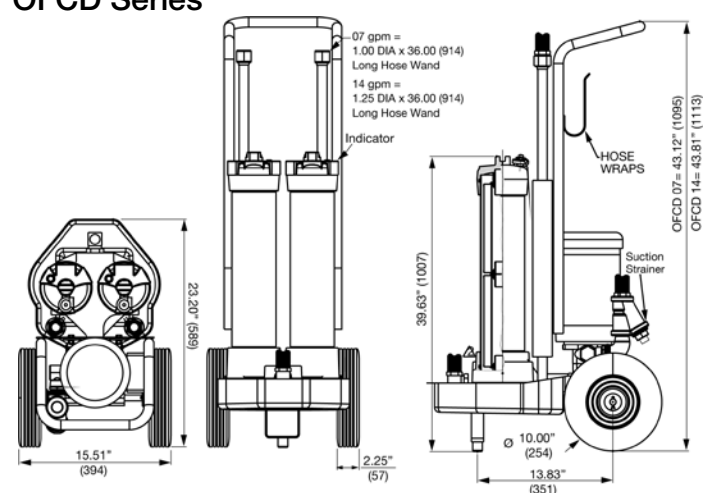
Model Codes Containing RED are non-standard items – Minimum quantities and longer lead times may apply - Contact HYDAC for information and availability

Dimensions

OFCS Series



OFCD Series



Dimensions are for general information only, all critical dimensions should be verified by requesting a certified print.