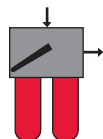


HIGH PRESSURE FILTERS

DFDK Series

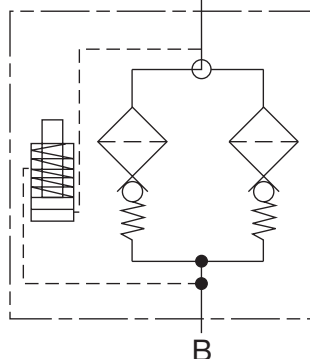
Inline Duplex Filters

4568 psi • up to 90 gpm

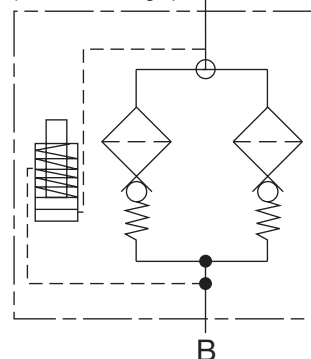


Hydraulic Symbol

DFDK...QL
"L" Ball Valve



DFDK...QT
"T" Ball Valve
(sizes 330 or larger)



Features

- The DFDK Filters have a filter head of ductile iron and a screw-in bowl of cold-formed steel.
- The filter housings are designed to withstand pressure surges as well as high static pressure loads.
- The screw-in bowl or lid, allows the filter element to be easily removed for replacement or cleaning.
- A visual (*pop-up*), electrical, electrical/visual (lamp), or other electronic differential types of clogging indicators are available to suit each application.
- DFDK filters are available only with high collapse pressure elements since no bypass is provided.
- DFDK sizes 330 and above can be ordered with a T Ball Valve which can operate in mid position with both elements fully open and online in parallel.

Note: QPD is available in sizes 160-1320 only.

Applications



Automotive



Industrial



Power Generation



Pulp & Paper



Railways



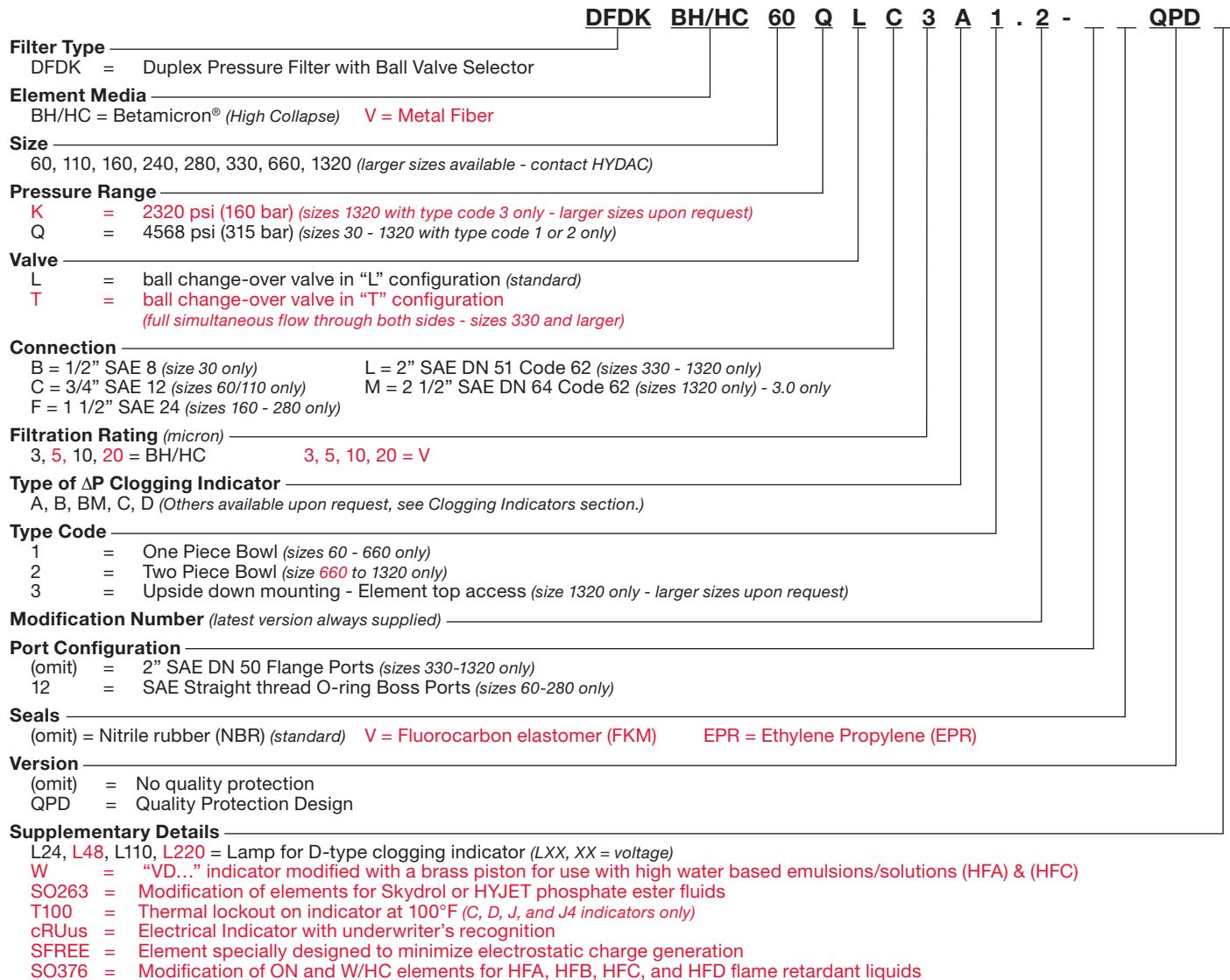
Steel / Heavy Industry

Technical Specifications

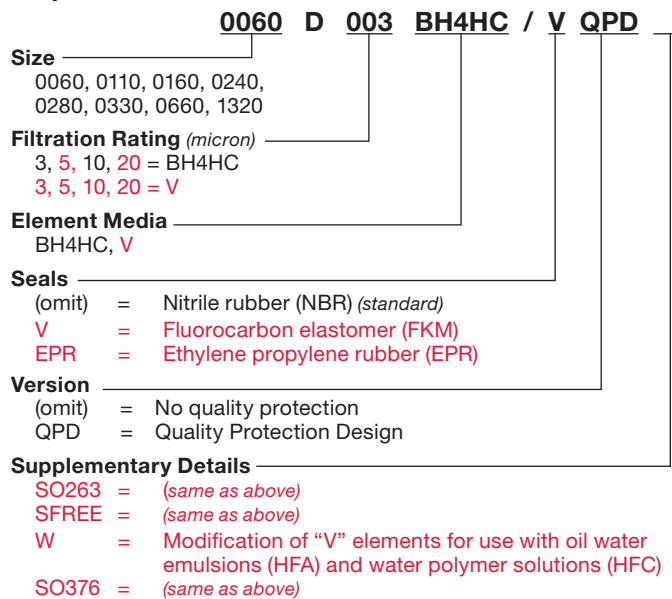
Mounting Method	4 mounting holes	
Port Connection	60/110 SAE-12 160/240/280 SAE-24 330/660/1320 2" SAE-DN 51 Code 62 Flange	
Flow Direction	60 - 280	330 - 1320
Inlet	Top	Top
Outlet	Side	Back
Construction Materials	Head Ductile iron Bowl Steel Housing (1320) Steel Lid/Cap (1320) Ductile iron	
Flow Capacity	60/110 13 gpm (50 lpm) 160/240/280 35 gpm (132 lpm) 330/660/1320 90 gpm (340 lpm)	
Housing Pressure Rating	Max. Allowable Working Pressure 4568 psi (315 bar) Fatigue Pressure Contact HYDAC Office Burst Pressure > 18,270 psi (1260 bar)	
Element Collapse Pressure Rating	BH4HC, V 3045 psid (210 bar)	
Fluid Temperature Range	14°F to 212°F (-10°C to 100°C) Consult HYDAC for applications operating below 14°F (-10°C)	
Fluid Compatibility	Compatible with all hydrocarbon based, synthetic, water glycol, oil/water emulsion, and high water based fluids when the appropriate seals are selected.	
Indicator Trip Pressure	$\Delta P = 116$ psid (8 bar) -10% (standard) Non-bypass Only	

HIGH PRESSURE FILTERS

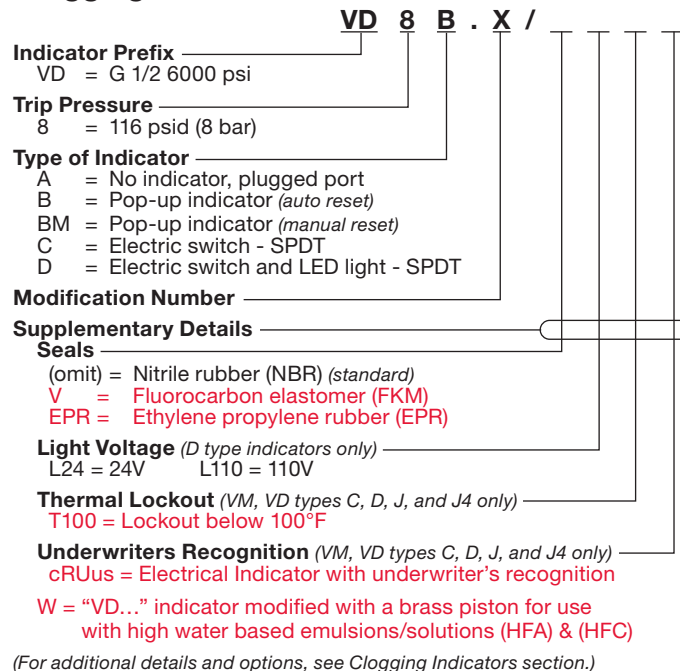
Model Code



Replacement Element Model Code



Clogging Indicator Model Code

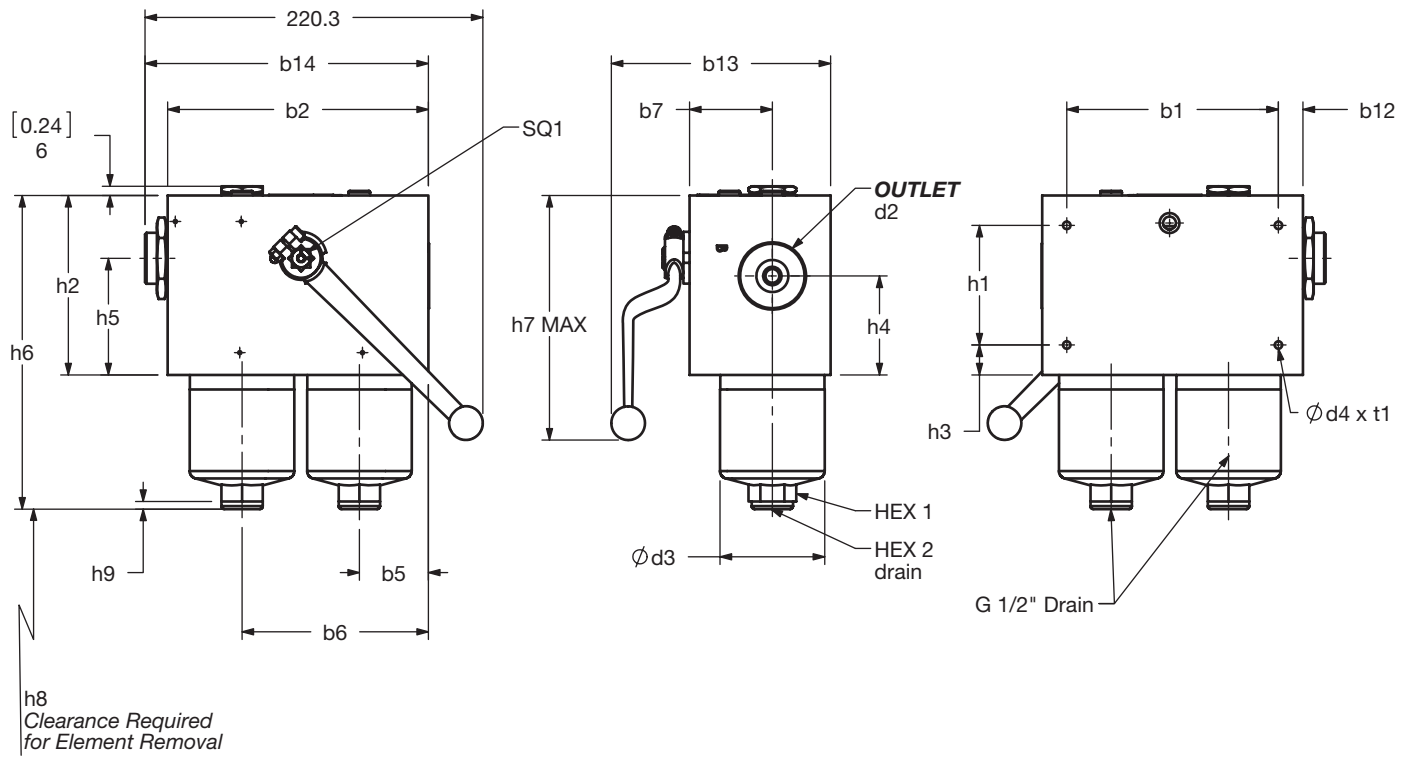
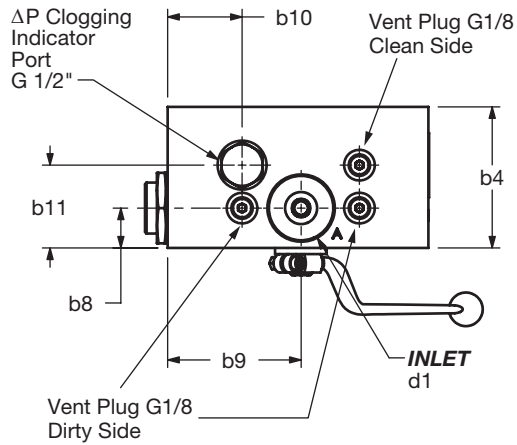


Model Codes Containing RED are non-stock items — Minimum quantities may apply — Contact HYDAC for information and availability

HIGH PRESSURE FILTERS

Dimensions

DFDK 60 / 110 / 160 / 240 / 280



Size	60	110	160	240	280
Weight (lbs.)	33.1	37.5	72.8	79.4	99.3

Dimensions shown are [inches] millimeters for general information and overall envelope size only. Weights listed include element. For complete dimensions please contact HYDAC to request a certified print.

HIGH PRESSURE FILTERS

DFDK	60	110	160	240	280
b1	[5.43] 138	[5.43] 138	[7.48] 190	[7.48] 190	[7.48] 190
b2	[6.69] 170	[6.69] 170	[8.27] 210	[8.27] 210	[8.27] 210
b4	[3.62] 92	[3.62] 92	[5.04] 128	[5.04] 128	[5.04] 128
b5	[1.77] 45	[1.77] 45	[2.07] 52.5	[2.07] 52.5	[2.07] 52.5
b6	[4.78] 121.5	[4.78] 121.5	[6.20] 157.5	[6.20] 157.5	[6.20] 157.5
b7	[2.13] 54	[2.13] 54	[2.97] 75.5	[2.97] 75.5	[2.97] 75.5
b8	[1.02] 26	[1.02] 26	[1.40] 35.5	[1.40] 35.5	[1.40] 35.5
b9	[3.43] 87	[3.43] 87	[4.13] 105	[4.13] 105	[4.13] 105
b10	[1.91] 48.5	[1.91] 48.5	[2.07] 52.5	[2.07] 52.5	[2.07] 52.5
b11	[2.13] 54	[2.13] 54	[2.97] 75.5	[2.97] 75.5	[2.97] 75.5
b12	[0.63] 16	[0.63] 16	[0.39] 10	[0.39] 10	[0.39] 10
b13 (≈)	[5.91] 150	[5.91] 150	[7.60] 193	[7.60] 193	[7.60] 193
b14 (≈)	[7.13] 181	[7.13] 181	[8.70] 221	[8.70] 221	[8.70] 221
d1*	1-1/16-12UN-2B SAE-12		1-7/8-12UN-2B SAE-24		
d2*					
d3	[2.69] 68.2	[2.69] 68.2	[3.75] 95.2	[3.75] 95.2	[3.75] 95.2
d4	1/4-28UNF-2B		3/8-24UNF-2B		
h1	[3.07] 78	[3.07] 78	[3.78] 96	[3.78] 96	[3.78] 96
h2	[4.61] 117	[4.61] 117	[6.38] 162	[6.38] 162	[6.38] 162
h3	[0.77] 19.5	[0.77] 19.5	[1.30] 33	[1.30] 33	[1.30] 33
h4	[2.54] 64.5	[2.54] 64.5	[4.17] 106	[4.17] 106	[4.17] 106
h5	[2.99] 76	[2.99] 76	[3.94] 100	[3.94] 100	[3.94] 100
h6	[8.07] 205	[10.89] 276.5	[11.20] 284.5	[13.60] 345.5	[20.69] 525.5
h7 (≈)	[8.07] 205	[8.07] 205	[9.65] 245	[9.65] 245	[9.65] 245
h8	[2.95] 75	[2.95] 75	[3.35] 85	[3.35] 85	[3.35] 85
h9	[0.20] 5	[0.20] 5	[0.20] 5	[0.20] 5	[0.20] 5
t1	[0.28] 7	[0.28] 7	[0.43] 11	[0.43] 11	[0.43] 11
HEX1	[1.06] 27	[1.06] 27	[1.26] 32	[1.26] 32	[1.26] 32
HEX2	[0.39] 10	[0.39] 10	[0.39] 10	[0.39] 10	[0.39] 10
SQ1	[0.47] 12	[0.47] 12	[0.55] 14	[0.55] 14	[0.55] 14

Dimensions shown are [inches] millimeters for general information and overall envelope size only.

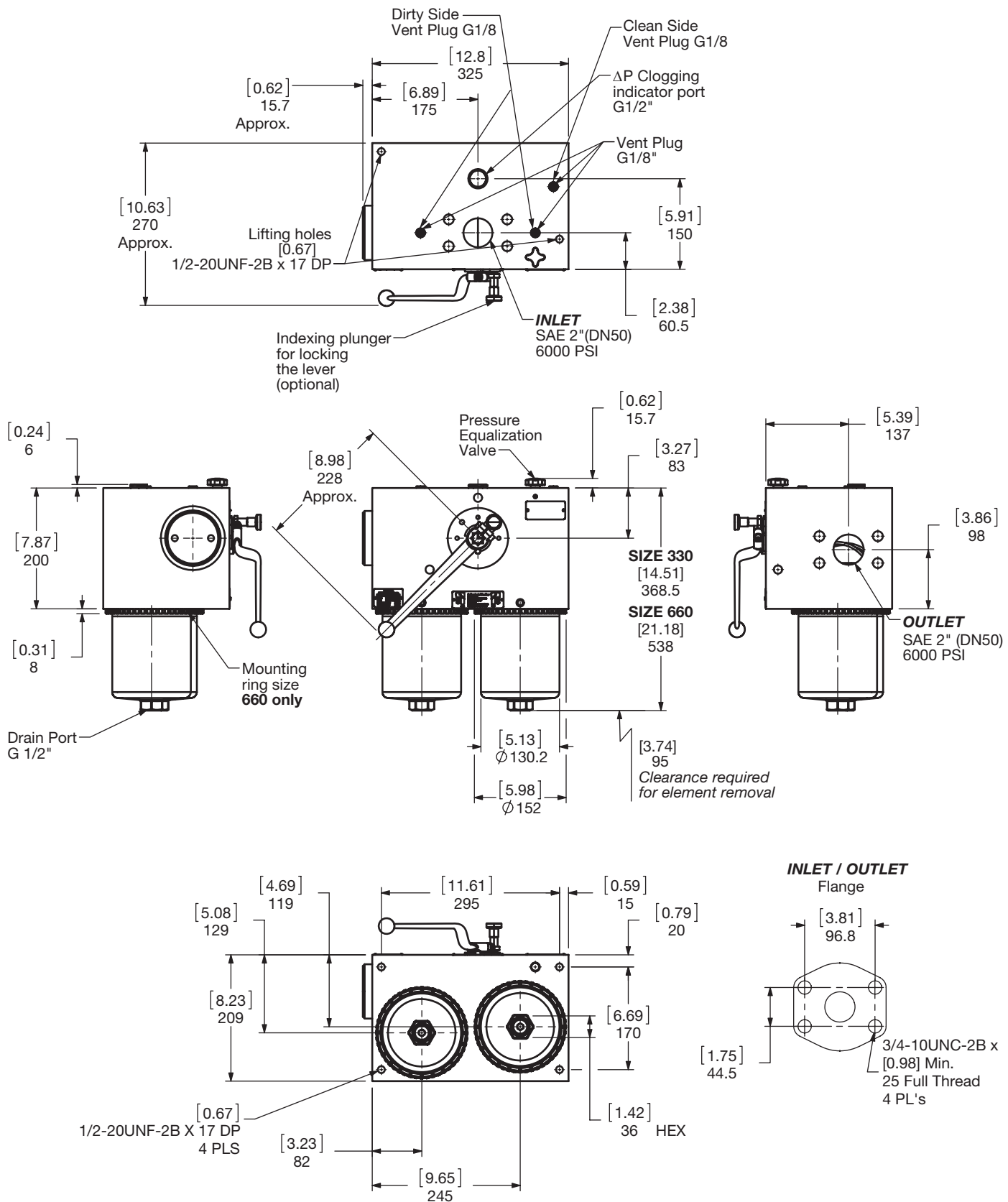
PN#02081318 / 07.19 / FIL1907-2109

HYDAC F51

HIGH PRESSURE FILTERS

Dimensions

DFDK 330 / 660...1.2

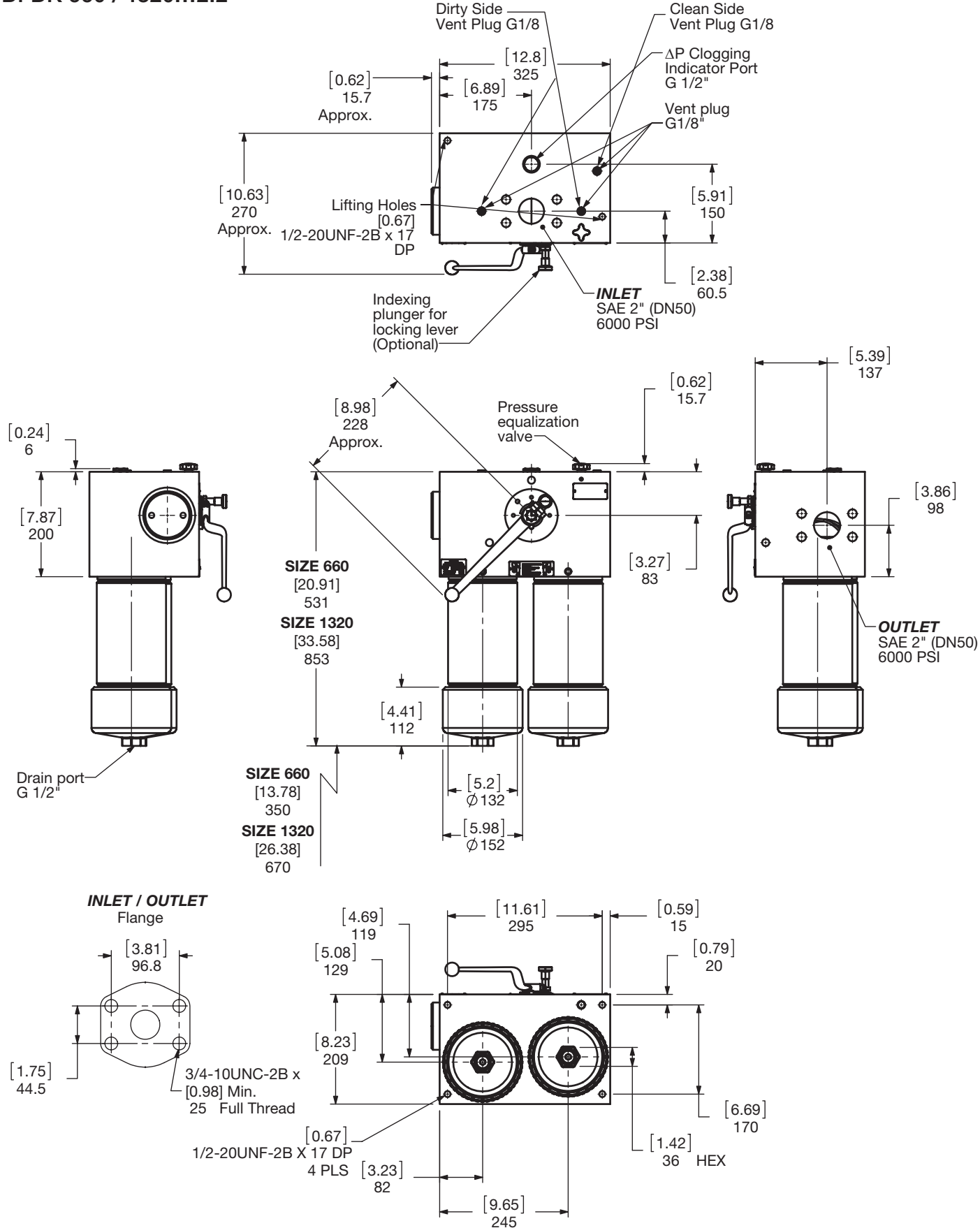


Size	330	660
Weight (lbs.)	213.9	249

Dimensions shown are [inches] millimeters for general information and overall envelope size only. Weights listed include element. For complete dimensions please contact HYDAC to request a certified print.

HIGH PRESSURE FILTERS

Dimensions DFDK 660 / 1320...2.2



Size	660	1320
Weight (lbs.)	262.5	335.1

Dimensions shown are [inches] millimeters for general information and overall envelope size only. Weights listed include element. For complete dimensions please contact HYDAC to request a certified print.

HIGH PRESSURE FILTERS

Sizing Information

Total pressure loss through the filter is as follows:

$$\text{Assembly } \Delta P = \text{Housing } \Delta P + \text{Element } \Delta P$$

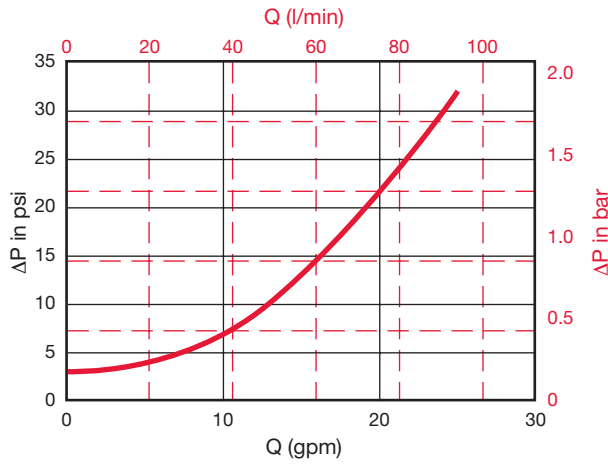
Housing Curve:

Pressure loss through housing is as follows:

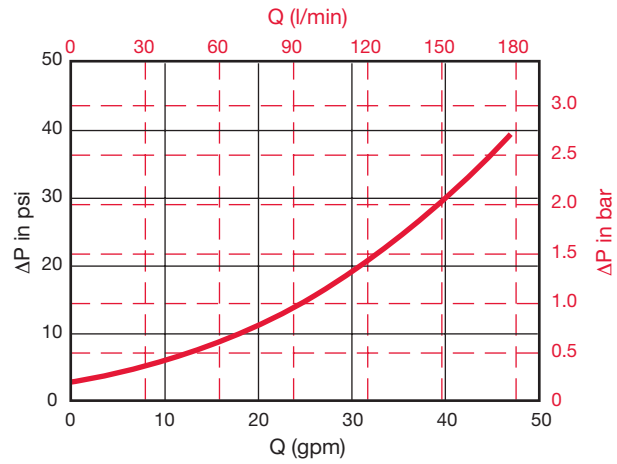
$$\text{Housing } \Delta P = \text{Housing Curve } \Delta P \times \frac{\text{Actual Specific Gravity}}{0.86}$$

Adjustments must be made for viscosity & specific gravity of the fluid to be used! (see "Sizing HYDAC Filter Assemblies" in Section B - Overview)

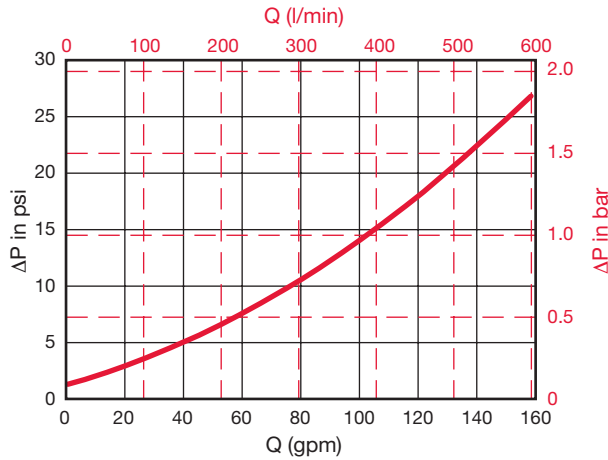
DFDK 60 / 110 Housing



DFDK 160 / 240 / 280 Housing



DFDK 330 / 660 / 1320 QLL Housing "L" Ball Valve



DFDK 330 / 660 / 1320 QTL Housing "T" Ball Valve

