

HDP-BC Series

Heavy-Duty Diesel PreCare - Manual Water Drain
up to 1800 l/h



Model No. of filter in photograph is: HDP KF1 600 BC1 10 W 1.1



Model No. of filter in photograph is: HDP KF1 600 BC1 10 W 1.1 /-H2-PE2

Description

Mobile machines and commercial vehicles are subject to the toughest working conditions. To ensure smooth running of vehicles, and to protect both the engine and the drive system from damage, optimum diesel fuel conditioning is particularly important. HYDAC Fuel Filtration On-Board Diesel Coalescing filter offers a modern cartridge filter system design available in a manual water drain configuration to protect equipment operators from failures, breakdowns and expensive service interventions

Features

- Manual water drain
- Optional fuel pre-heater, Water-In-Fuel (WIF) sensor, and hand priming pump
- Small envelope size offers greater flexibility in mounting locations
- Low investment cost due to the economical design
- Long service life of the element yields low operating costs
- Easy installation due to various porting configurations
- Easy adaption of accessories to the on-board power supply
- Unsurpassed water removal for ULSD

Technical Specifications

Flow Rating:	up to 476 gph (up to 1800 lph)
Operating Pressure:	<14.5 psia, (<1 bar absolute) suction side application
Temperature Range:	BC: -40°F to 194°F (-40°C to 90°C) *for extended ranges, contact factory
Nominal Voltage:	WIF: 12/24VDC Heater: 24VDC, 12VDC is optional
Rated Power Fuel Preheating:	300W
Weight of incl. Element:	340 BC: 5.1 lbs (2.3 kg) 600 BC: 6.8 lbs (3.1 kg) *other models available upon request
Water Separation Efficiency:	>95% to ISO CD 16332
Porting Thread:	340 BC: M22x1.5 600 BC: M27x2.0, SAE -12 ORB (optional)

ON-BOARD FUEL FILTRATION PRODUCTS

Model Code *(also order example)*

HDP KF1 600 BC1 10 W 1 . X / -AS1

Filter Series

HDP = HYDAC Diesel PreCare

Filter Material

KF1 = Dieselmicron®

Size

340 = 90 gph (340 lph)
 600 = 160 gph (600 lph)
 1200 = 317 gph (1200 lph)
 1800 = 476 gph (1800 lph)

Evolution Stage

BC1 = Manual Drain Configuration

Filtration Rating

7 = 7 µm
 10 = 10 µm
 30 = 30 µm

Type of Clogging Indicator

W = No Clogging Indicator

Type Code

1

Modification Number

X = latest version number always supplied

Options

-AS1 = Water-In-Fuel Sensor (12/24 VDC)
 -AS3 = Cummins® Ready Water-In-Fuel Sensor
 -H1 = Fuel Pre-Heater (12 VDC)
 -H2 = Fuel Pre-Heater (24 VDC)
 -PH3 = Hand Priming Pump (600, 1200, or 1800 BC1 only)
 -PE1 = Integral Electric Pump (12 VDC)
 -PE2 = Integral Electric Pump (24 VDC)

Porting

Omit = M22 x 1.5 (340 size)
 M27 x 2.0 (600 size)
 -08 = SAE -08 ORB (340 size only)
 -12 = SAE -12 ORB (600 size only)

Bowl Material

Omit = Polyamide Bowl
 -ALU = Aluminum Bowl

Notes: For other options or configurations not listed, please contact factory

Element Particulate Performance

Particulate Elements	Filtration Ratio Per ISO 19438	Dirt Retention Per ISO 19438
	n > 10 µm (c)	to DP
10 µm	> 99%	300 mbar m > 42g

Element Water Coalescing Performance

Coalescing Element	Suction Side Coalescing Per ISO CD 16332	
	Max Flow	Single Pass Water Removal Efficiency
10 µm	160 gal/h	> 95%

Flow Direction: Outside In
 Element Nominal Dimensions: 3.8" (95.6 mm) O.D. x 7.0" (177.2 mm) long - 340 Size
 3.8" (95.6 mm) O.D. x 9.4" (238.2 mm) long - 600 Size

Note: For additional HDP performance information, please contact the factory

Fuel Oils

- ULSD15 and similar petroleum diesels
- Biodiesel blends
- Synthetic diesel and blends

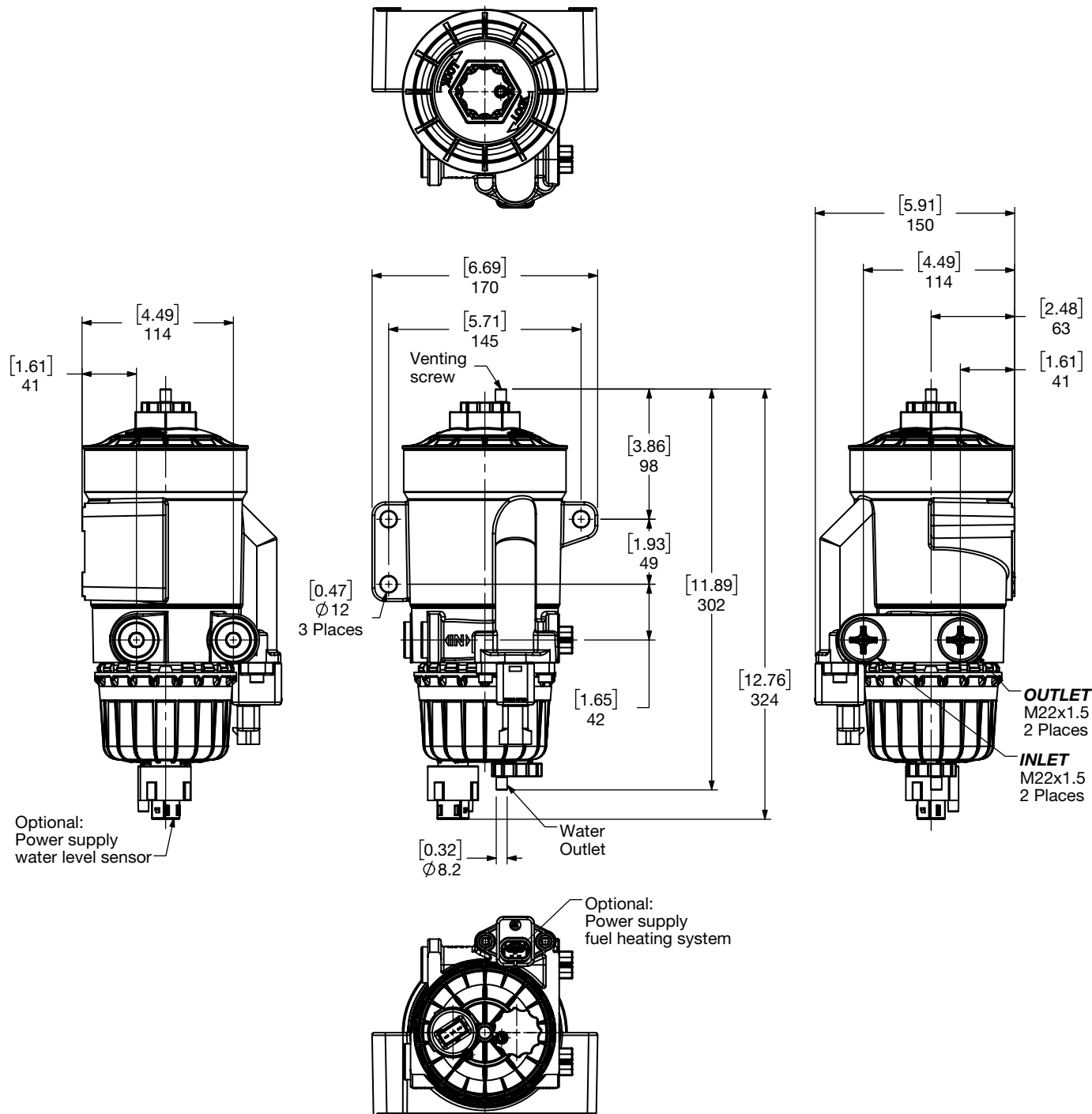
Note: For Flow and Pressure information, please contact the factory

Replacement Elements

Size	Evolution Stage	Filtration Rating	Filter Material
0340	BC1	007	KF1
0600		010	
		030	

ON-BOARD FUEL FILTRATION PRODUCTS

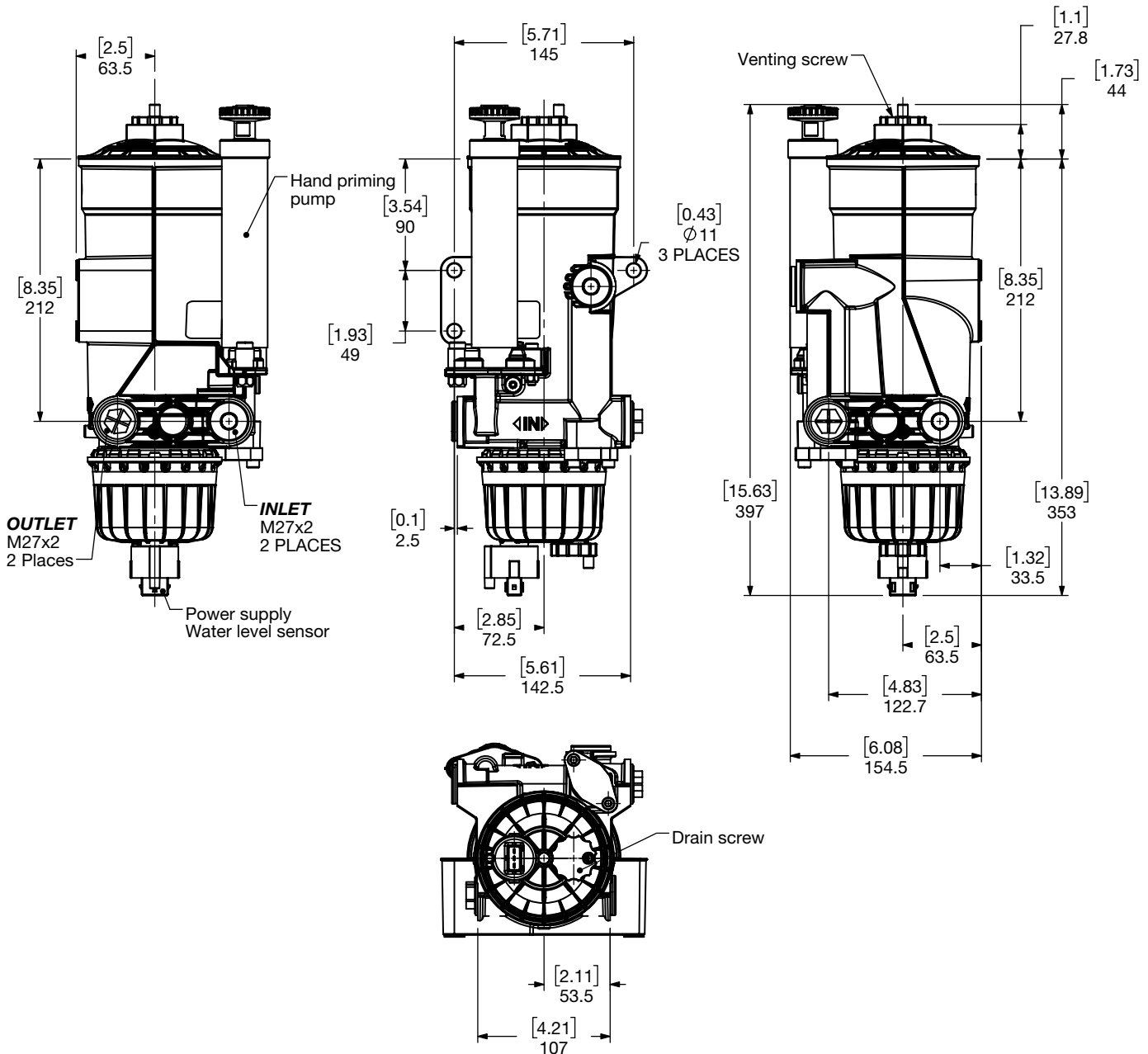
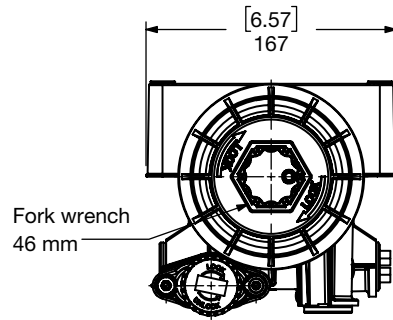
Dimensions HDP-BC 340



Dimensions shown are [inches] millimeters and for general information only. For complete dimensions please contact HYDAC to request a certified print.

ON-BOARD FUEL FILTRATION PRODUCTS

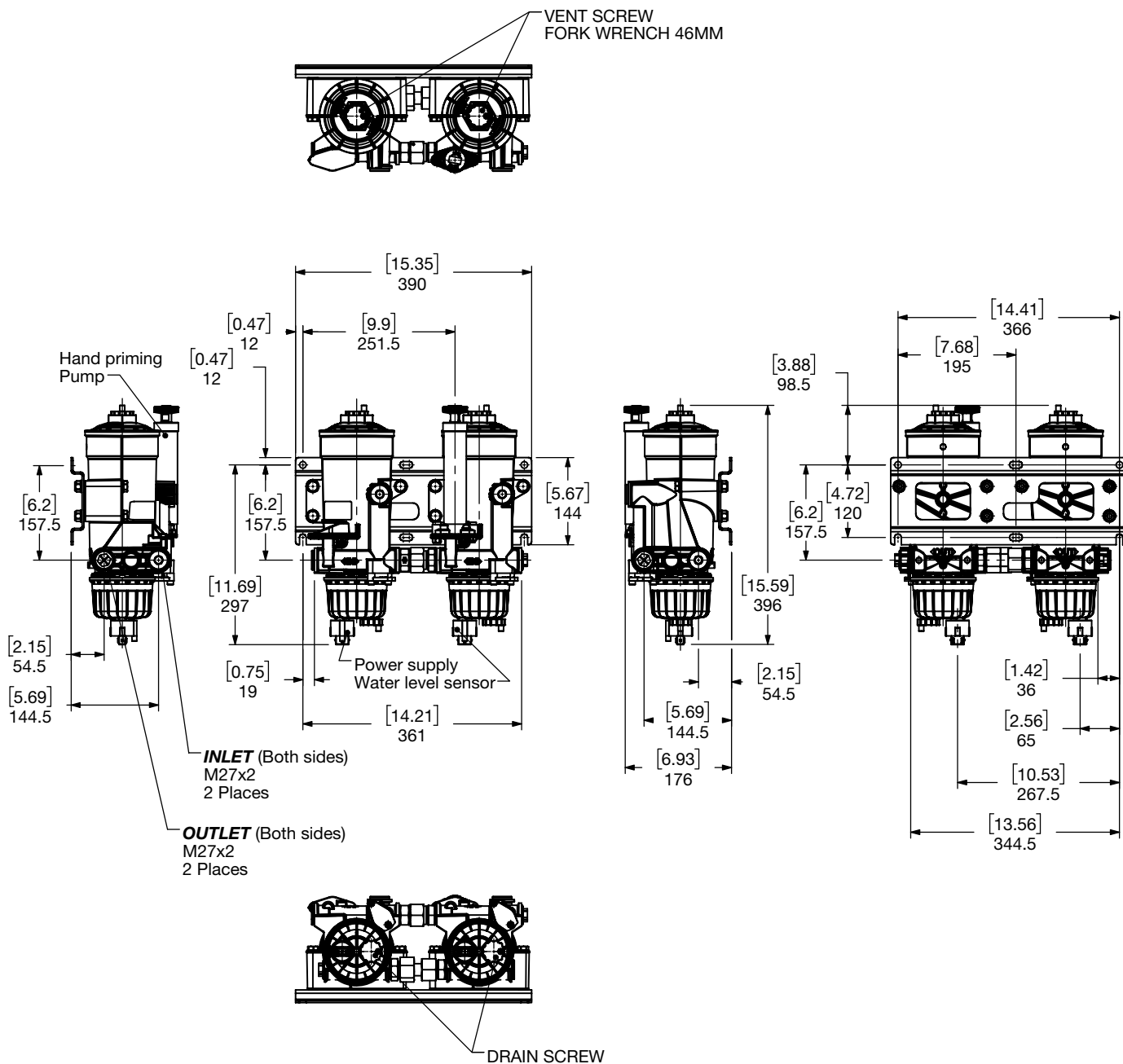
Dimensions
HDP-BC 600



Dimensions shown are [inches] millimeters and for general information only. For complete dimensions please contact HYDAC to request a certified print.

ON-BOARD FUEL FILTRATION PRODUCTS

Dimensions HDP-BC 1200



Dimensions shown are [inches] millimeters and for general information only. For complete dimensions please contact HYDAC to request a certified print.

HDP	340 BC	600 BC	1200 BC	1800 BC
Weight incl. element lbs. (kg)	5.1 (2.3)	6.8 (3.1)	20.1 (9.1)	30.9 (14.0)

For drawing of configurations not shown, contact factory