

D Standard Clamps

In addition to the DIN 3015 Clamps HYDAC offers other standard products that assure a simple, reliable dampening support for lines which absorb shock, dampen vibration, and reduce noise in plumbing systems. Please contact HYDAC to discuss what product is right for you and your application.

STANDARD CLAMPS

HRBGS Series

Buegu Clamps



Description

Buegu clamps are ideal for mobile applications where space is limited. They absorb shock and vibration, and reduce noise.

Features

- Low Profile Design
- Shock and vibration reduction
- Easy installation

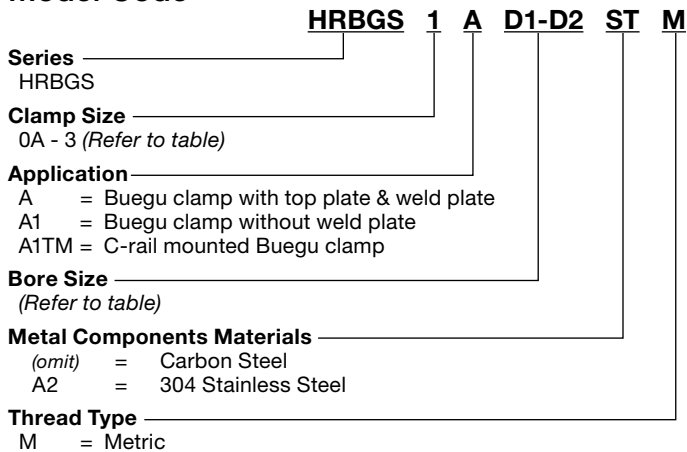
Materials

- Stirrup & Weld Plate - carbon steel
- Clamp Body - thermoplastic elastomer (*Santoprene TPE 73*)

Temp Specifications

- -40° to 257°F (-40° to 125°C)

Model Code

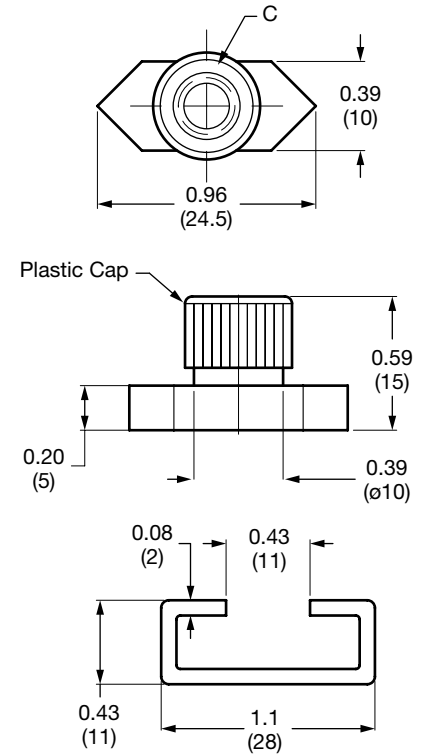
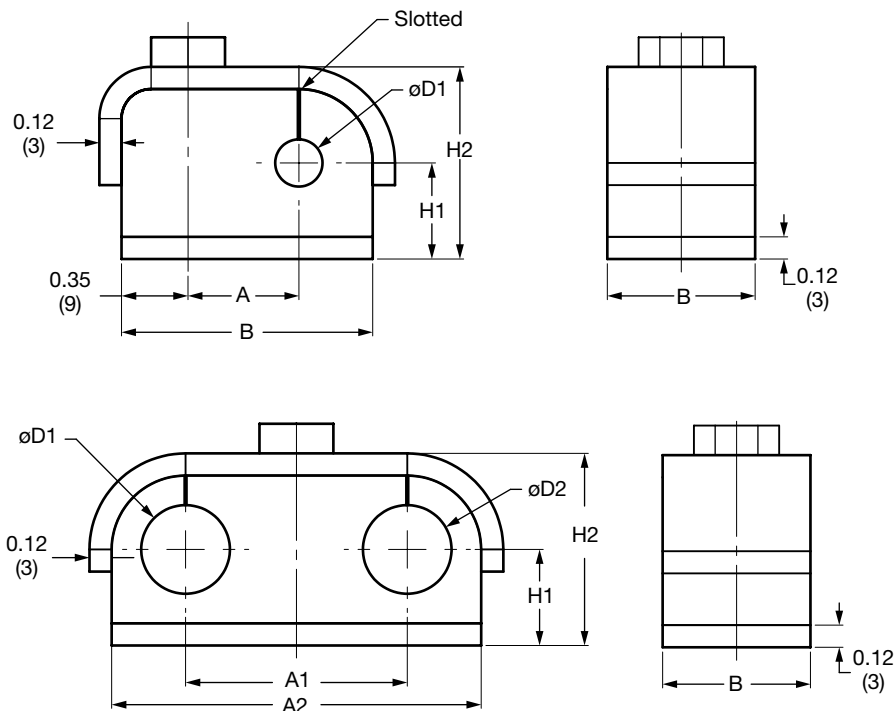


Part Legend	A - Buegu Clamp with Weld Plate
1. Hex Head Bolt	
2. Stirrup	
3. Sleeve	
4. Rubber Body	
5. Weld Plate	

Part Legend	A1 - Buegu Clamp without Weld Plate
1. Hex Head Bolt	
2. Stirrup	
3. Sleeve	
4. Rubber Body	

Part Legend	A1TM - Buegu Clamp - C-Rail Mounted
1. Hex Head Bolt	
2. Stirrup	
3. Sleeve	
4. Rubber Body	
5. C-Rail Nut	
6. C-Rail	

Dimensions HRBGS Series



Clamp Size	Tube O.D.	Pipe Size	Bore Diameter*		Dimensions					Bolt Size C
			øD1	øD2	A1	A2	H1	H2	B	
0A	1/4"	-	0.25 (6.4)	-	0.56 (15)	1.34 (34)	0.39 (10)	0.91 (23)	0.78 (20)	M6 X 25
	3/8"	-	0.375 (9.5)	-						
	-	1/8"	0.394 (10.0)	-						
0B	1/2"	-	0.5 (12.7)	-	0.71 (18)	1.54 (39)	0.47 (12)	1.03 (27)	0.78 (20)	M6 X 25
	-	1/4"	0.54 (13.7)	-						
	5/8"	-	0.625 (16.0)	-						
	-	3/8"	0.675 (17.1)	-						
0C	3/4"	-	0.75 (19.0)	-	0.93 (23.5)	2.26 (57.5)	0.78 (20)	1.69 (43)	1.18 (30)	M8 X 45
	-	1/2"	0.84 (21.3)	-						
	1"	-	1.0 (25.4)	-						
1	1-1/4"	-	1.26 (32.0)	-	1.18 (30)	1.97 (50)	0.39 (10)	0.91 (23)	0.78 (20)	M6 X 25
	1/4"	-	0.25 (6.4)	0.25 (6.4)						
	3/8"	-	0.375 (9.5)	0.375 (9.5)						
	-	1/8"	0.394 (10.0)	0.394 (10.0)						
2	1/2"	-	0.5 (12.7)	0.5 (12.7)	1.38 (35)	2.32 (59)	0.47 (12)	1.03 (27)	0.78 (20)	M6 X 25
	5/8"	-	0.625 (16.0)	0.625 (16.0)						
	-	3/8"	0.675 (17.1)	0.675 (17.1)						
3	3/4"	-	0.75 (19.0)	0.75 (19.0)	1.85 (47)	3.39 (86)	0.78 (20)	1.69 (43)	1.18 (30)	M8 X 45
	-	1/2"	0.84 (21.3)	0.84 (21.3)						
	1"	-	1.0 (25.4)	1.0 (25.4)						
	1-1/4"	-	1.260 (32.0)	1.26 (32.0)						

* Consult factory for sizes 1 and 2 with different bore diameters.

Notes:

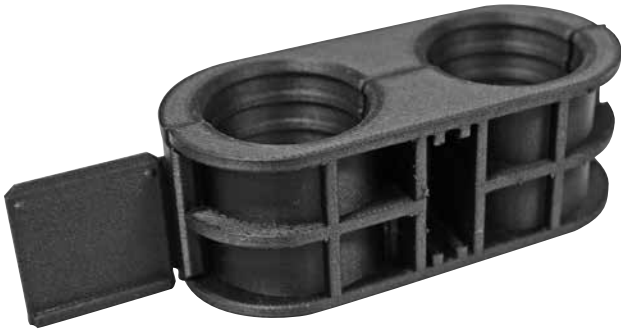
1. Dimensions are in inches (mm).

2. Dimensions are for general information only, all critical dimensions should be verified by requesting a certified print.

STANDARD CLAMPS

HFC Series

Flying Clip Clamp



Description

Holds free hanging hydraulic hoses, used in mobile and industrial environments, and prevents parallel running hoses from rubbing together.

Features

- Clamshell design for hinge durability
- Easy Installation
- Resistant to torsional forces

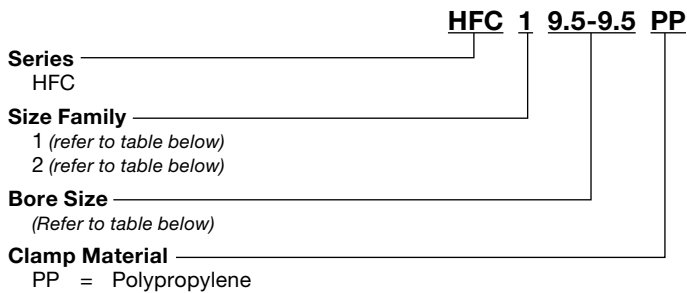
Materials

- PP - Polypropylene (standard)

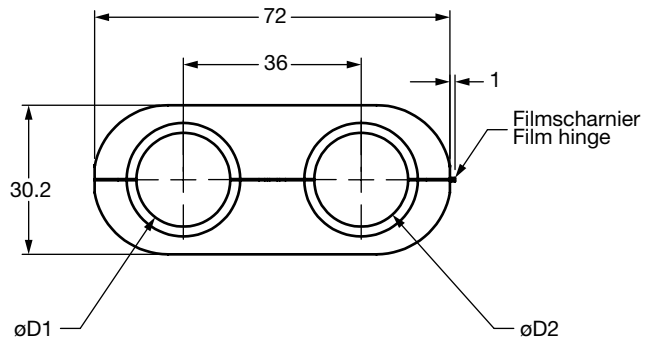
Temp Specifications:

- Polypropylene: -30°C to +90°C

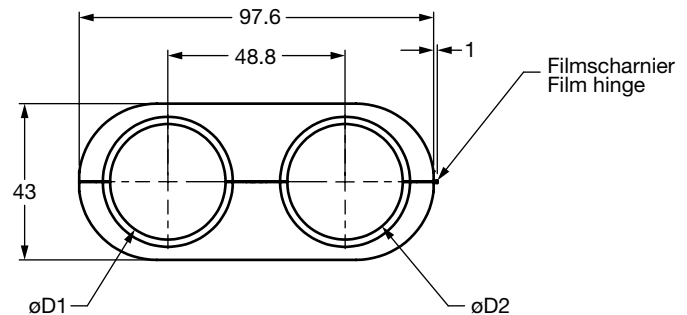
Model Code



Dimensions Family Size 1



Dimensions Family Size 2



Available Family Size 1

Model	Part Number	Bore Diameter	Length
HFC 1 9.5-9.5PP	2208368	9.5 mm	72 mm
HFC 1 19-19PP	2210467	19.0 mm	72 mm

Available Family Size 2

Model	Part Number	Bore Diameter	Length
HFC 2 25.4-25.4 PP	2212160	25.4 mm	97.6mm
HFC 2 28.6-28.6 PP	2212161	28.6 mm	97.6 mm

Notes:

1. Dimensions are in mm.
2. Dimensions are for general information only, all critical dimensions should be verified by requesting a certified print.

HUB Series

U-Bolt with Cushion Clamps



Description

Designed for the tough jobs, the HUB Series secures pipe runs to any flat surface. The U-Bolt traps and secures the cushion in place to prevent lateral movement, while nylon insert locknuts provide a positive lock.

Features

The cushion design provides total load distribution, allowing the U-Bolt to become a full contact hanger, eliminating knife-edge loading. Extremely cost effective, especially in larger sizes.

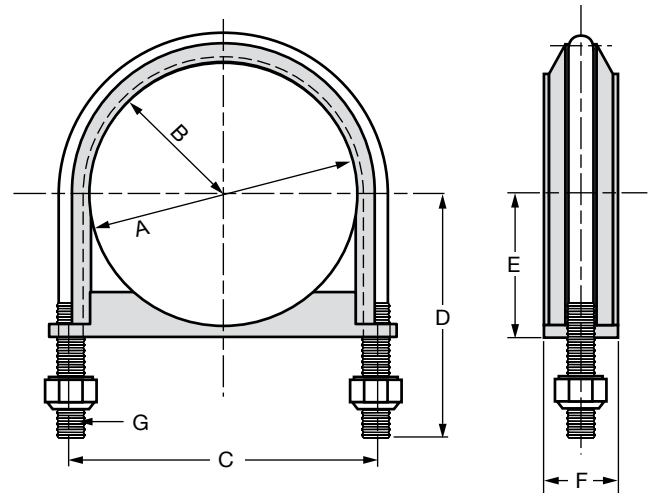
Materials

- U-Bolt - Steel with electro-galvanized finish or 316 stainless steel*
- Cushion - Thermoplastic elastomer, rated from -50° to 275°F

Model Code



Dimensions



Clamp Size	Pipe Size	øA	B	C	D	E	F	G
1/2	1/2	0.84	0.80	1.60	1.50	0.67	0.68	1/4-20 UNC-2B
3/4	3/4	1.05	0.90	1.80	1.60	0.78	0.68	
1	1	1.31	1.02	2.05	1.70	0.91	0.68	
1-1/4	1-1/4	1.66	1.27	2.55	2.10	1.08	1.24	3/8-16 UNC-2B
1-1/2	1-1/2	1.90	1.40	2.80	2.20	1.19	1.24	
2	2	2.37	1.67	3.35	2.5	1.45	1.24	
2-1/2	2-1/2	2.87	1.95	3.90	3.00	1.69	1.24	1/2-13 UNC-2B
3	3	3.5	2.27	4.55	3.3	2	1.24	
3-1/2	3-1/2	4	2.52	5.05	3.7	2.25	1.24	
4	4	4.5	2.75	5.5	3.9	2.5	1.24	
5	5	5.56	3.25	6.56	4.5	3.03	1.24	
6	6	6.62	3.87	7.75	5.4	3.56	1.44	5/8-11 UNC-2B
8	8	8.82	4.85	9.82	6.4	4.56	1.44	
10	10	10.75	6.08	12.16	7.7	5.68	1.65	3/4-10 UNC-2B
12	12	12.75	7.13	14.25	8.7	6.68	1.65	

Notes:

1. Dimensions are in inches (mm).
2. Dimensions are for general information only, all critical dimensions should be verified by requesting a certified print.

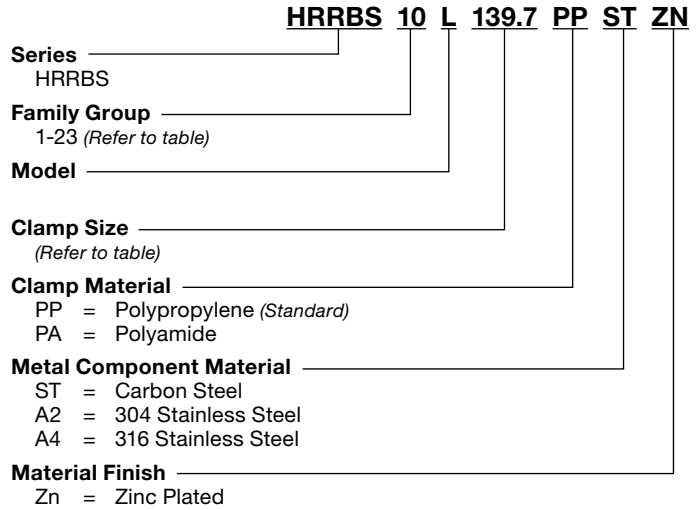
STANDARD CLAMPS

HRRBS Series

U-Bolt Clamps



Model Code



Description

U-bolt clamps are a simple solution for securing pipes and other cylindrical objects. The clamps consist of a threaded "U" and a contoured saddle.

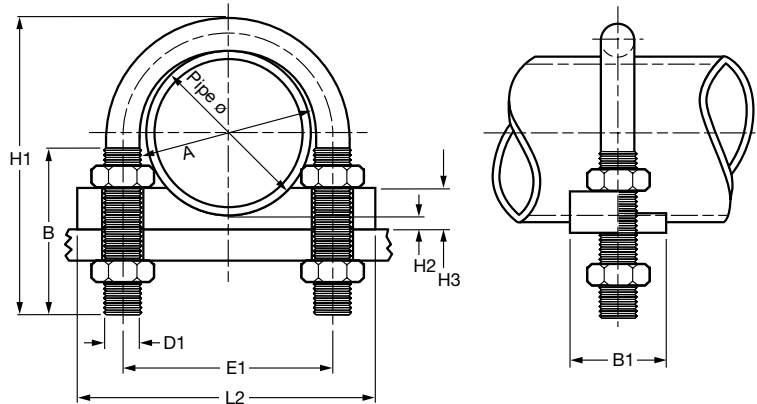
Features

- Metric Threads
- Easy installation

Materials

- Threaded "U" - zinc-plated carbon steel
- Saddle - polypropylene

Dimensions



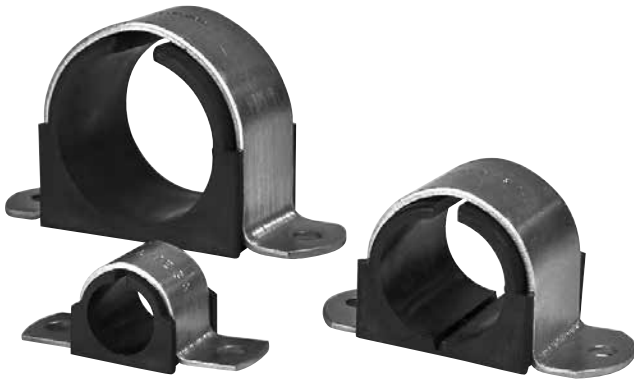
Group	Clamp Size	Pipe Size	øA	B	D1	E1	H1	H2	H3	L2	B1
1	0.67 (17.1) 0.84 (21.3)	3/8 (9.5) 1/2 (12.7)	0.91 (23)	1.57 (40)	M10	1.3 (33)	2.56 (65)			2.36 (60)	0.98 (25)
2	1.06 (26.9)	3/4 (19.1)	1.18 (30)			1.57 (40)	2.76 (70)			2.95 (75)	
3	1.33 (33.7)	1 (25.4)	1.5 (38)	1.89 (48)		2.95 (75)	3.15 (80)				
4	1.67 (42.4)	1-1/4 (31.8)	1.81 (46)	2.2 (56)		3.39 (86)	3.54 (90)				
5	1.9 (48.3)	1-1/2 (38.1)	2.05 (52)	1.97 (50)	2.44 (62)	3.62 (92)	3.74 (95)	1.38 (35)	4.33 (110)		
6	2.37 (60.3)	2 (50.8)	2.52 (64)	2.99 (76)	4.29 (109)	5.31 (135)					
7	3 (76.1)	-	3.23 (82)	2.36 (60)	M12	3.7 (94)	4.92 (125)			5.71 (145)	1.77 (45)
8	3.5 (88.9)	3 (76.2)	3.7 (94)	4.17 (106)	5.43 (138)	7.48 (190)					
9	4.5 (114.3)	4 (101.6)	4.72 (120)	3.15 (80)	M16	5.35 (136)	6.73 (171)			8.66 (220)	1.97 (50)
10	5.5 (139.7)	5 (127)	5.83 (148)			6.46 (164)	7.52 (191)			9.84 (250)	
11	6.63 (168.3)	6 (152.4)	6.93 (176)			7.56 (192)	8.54 (217)			10.63 (270)	
12	7.63 (193.7)	7 (177.8)	7.95 (202)	3.94 (100)	M20	8.58 (218)	9.8 (249)			12.4 (315)	2.36 (60)
13	8.63 (219.1)	8 (203.2)	8.98 (228)			9.76 (248)	11.14 (283)			14.57 (370)	
14	10.75 (273)	10 (254)	11.1 (282)			11.89 (302)	13.15 (334)			16.54 (420)	
15	12.75 (323.9)	12 (304.8)	13.07 (332)			13.86 (352)	15.16 (385)			18.9 (480)	
16	14 (355.6)	14 (355.6)	14.88 (378)	5.91 (150)	M24	15.83 (402)	17.13 (435)			21.26 (540)	2.76 (70)
17	16 (406.4)	16 (406.4)	16.85 (428)			17.8 (452)	19.17 (487)			25.2 (640)	
18	20 (508)	20 (508)	20.87 (530)			21.81 (554)	23.19 (589)			27.56 (700)	
19	21.97 (558)	22 (558.8)	22.44 (570)	M30	23.62 (600)	25.59 (650)	29.53 (750)			31.89 (810)	
20	23.98 (609)	24 (609.6)	24.49 (622)		25.67 (652)	27.56 (700)	34.25 (870)				
21	25.98 (660)	26 (660.4)	26.77 (680)		27.95 (710)	29.92 (760)	35.83 (910)				
22	27.99 (711)	28 (711.2)	28.74 (730)		29.92 (760)	31.89 (810)					
23	30 (762)	30 (762)	30.91 (785)		32.09 (815)	34.25 (870)					

Notes:

1. Dimensions are in inches (mm).
2. Dimensions are for general information only, all critical dimensions should be verified by requesting a certified print.

HOM Series

Flat Cushion Clamps



Description

The interlock edge insures that the cushion remains in place. The HOM Series clamp assembly retains, guides, protects and uniformly spaces line runs. They go up fast, lines are rigid, and look neat.

Features

Attached with two standard* fasteners to any flat surface, the HOM Series clamp eliminates the use of special channels, providing savings in both space and cost.

- Low profile for limited space applications.

Materials

The Clamp

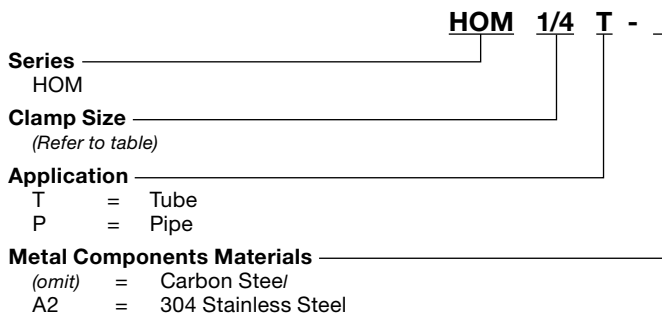
Available in steel (with electro-dichromate finish), and 304 stainless steel (*A2 in the model code denotes 304 stainless steel*).

The Cushion

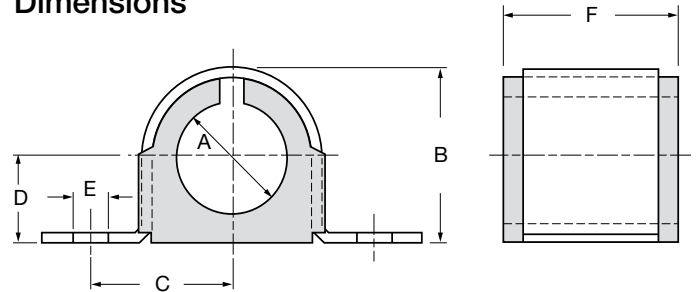
Manufactured from a thermoplastic elastomer, it's built tough to withstand the effects of most oils, chemical and industrial cleaning compounds, in temperatures from -50°F to 275°F.

*Note: Fasteners not provided.

Model Code



Dimensions

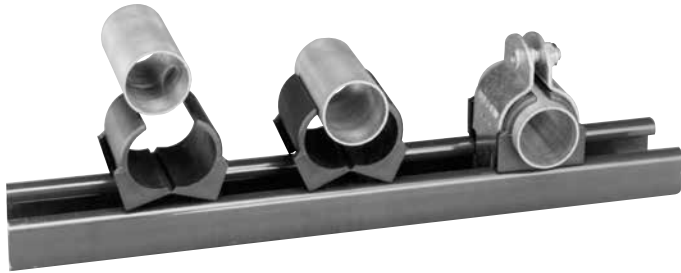


Clamp Size / Application		Dimensions					
Tube O.D.	Pipe	A	B	C	D	E	F
1/4"	-	0.25	0.48	0.60	0.22	0.26	0.78
-	1/4"	0.50	0.81	0.83	0.40	0.26	0.98
3/8"	-	0.37	0.62	0.66	0.31	0.26	0.81
-	3/8"	0.62	0.93	0.85	0.40	0.26	0.98
1/2"	-	0.50	0.81	0.83	0.40	0.26	0.98
-	1/2"	0.87	1.12	1.03	0.53	0.26	0.98
5/8"	-	0.62	0.93	0.85	0.40	0.26	0.98
3/4"	-	0.75	1.02	0.9	0.5	0.26	0.98
-	3/4"	1.05	1.4	1.11	0.7	0.26	0.98
7/8"	-	0.87	1.12	1.03	0.53	0.26	0.98
1"	-	1	1.24	1.04	0.59	0.26	0.98
-	1"	1.31	1.71	1.28	0.81	0.26	1.56
1-1/8"	-	1.12	1.4	1.17	0.7	0.26	0.98
1-1/4"	-	1.25	1.6	1.2	0.77	0.26	1.56
-	1-1/4"	1.66	2.12	1.55	0.99	0.34	1.56
1-3/8"	-	1.37	1.71	1.28	0.83	0.26	1.56
1-1/2"	-	1.5	1.85	1.36	0.9	0.26	1.56
-	1-1/2"	1.87	2.25	1.64	1.09	0.34	1.56
1-5/8"	-	1.62	1.95	1.43	0.96	0.26	1.56
1-3/4"	-	1.75	2.12	1.55	1.02	0.34	1.56
1-7/8"	-	1.87	2.25	1.64	1.09	0.34	1.56
2"	-	2.87	2.38	1.69	1.15	0.34	1.56
-	2"	2.37	2.88	1.94	1.41	0.34	1.56
2-1/8"	-	2.12	2.62	1.96	1.27	0.34	1.56
2-3/8"	-	2.37	2.88	1.94	1.41	0.34	1.56
5-1/8"	-	5.12	5.82	3.55	2.84	0.43	1.56

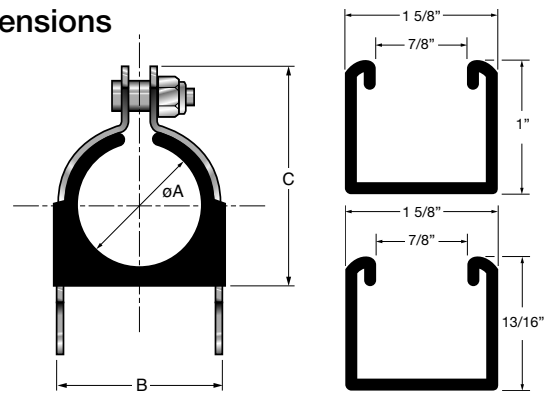
- Notes:
1. Dimensions are in inches (mm).
 2. Dimensions are for general information only, all critical dimensions should be verified by requesting a certified print.

STANDARD CLAMPS

CUSH Series Cushion Clamps



Dimensions



Clamp Size / Application		Dimensions		
Tube O.D.	Pipe	A	B	C
1/4"	-	0.25	0.62	0.98
-	1/4"	0.54	0.98	1.34
3/8"	-	0.37	0.82	1.13
-	3/8"	0.67	1.13	1.54
1/2"	-	0.50	0.94	1.34
-	1/2"	0.84	1.29	1.82
5/8"	-	0.62	1.06	1.54
3/4"	-	0.75	1.2	1.68
-	3/4"	1.05	1.5	1.95
7/8"	-	0.87	1.31	1.82
1"	-	1	1.44	1.95
-	1"	1.31	1.76	2.34
1-1/8"	-	1.12	1.57	2.08
1-1/4"	-	1.25	1.7	2.21
-	1-1/4"	1.66	2.17	2.73
1-3/8"	-	1.37	1.82	2.34
1-1/2"	-	1.5	1.95	2.47
-	1-1/2"	1.9	2.35	2.86
1-5/8"	-	1.62	2.07	2.6
1-3/4"	-	1.75	2.2	2.73
1-7/8"	-	1.87	2.32	2.86
2"	-	2	2.45	3.04
-	2"	2.37	2.82	3.67
2-1/8"	-	2.12	2.57	3.23
2-3/8"	-	2.37	2.82	3.67
2-1/2"	-	2.5	2.94	3.79
-	2-1/2"	2.87	3.32	4.17
2-5/8"	-	2.62	3.07	3.92
2-7/8"	-	2.87	3.32	4.17
3"	-	3.00	3.57	4.42
-	3"	3.50	3.95	4.79
3-1/8"	-	3.12	3.57	4.42
3-5/16"	-	3.31	3.96	4.75
3-1/2"	-	3.50	3.95	4.79
-	3-1/2"	4	4.45	5.11
3-5/8"	-	3.62	4.2	5.11
4"	-	4	4.45	5.11
-	4"	4.5	4.95	5.92
4-1/8"	-	4.12	4.57	5.54
4-1/2"	-	4.5	4.95	5.92
-	5"	5.56	6.01	6.92
5-1/8"	-	5.12	5.57	6.54
6"	-	6	6.57	7.54
-	6"	6.62	7.07	8.23
6-1/8"	-	6.12	6.57	7.54

Notes:
 1. Dimensions are in inches (mm).
 2. Dimensions are for general information only, all critical dimensions should be verified by requesting a certified print.

Description

Cushion clamps are ideal for multiple line runs, while absorbing shock and vibration, reducing unwanted noise and preventing galvanic corrosion.

Features

- Distortion free clamping
- Shock and vibration reduction
- Elimination of rotation
- Retrofit without disassembly
- Easy installation
- Control squeeze shoulder bolt prevents over tightening of the clamp assembly, preventing the possibility of crushing the tube.
- Fits standard 1-5/8" wide mounting rail

Materials

- Clamp - carbon steel (with electro-dichromate finish)
- Cushion - thermoplastic elastomer
- Cushion material withstands the effect of most oils, chemicals and industrial cleaning solvents at temperatures -40° to 275°F.

Mounting Rail

- **Part Number:** 02073325
- **Model Code:** Cush Rail 1" x 4' Galvanized
- **Material:** Low gauge carbon steel
- **Finish:** Galvanized
- **Length:** 4'

Materials

- Clamp - Stainless steel 304
- Cushion - thermoplastic elastomer

Mounting Rail

- **Part Number:** 02701588
- **Model Code:** Cush Rail 13/16" x 10' A2
- **Material:** Stainless steel 304
- **Length:** 10'0" 4'

Model Code

CUSH 1/4 T -

- Series _____
 CUSH
- Clamp Size _____
 (Refer to table)
- Application _____
 T = Tube
 P = Pipe
- Metal Components Materials _____
 (omit) = Carbon Steel
 A2 = 304 Stainless Steel

HSVW & HLVZ Series

“P” Style Loop Clamps (Vinyl Dipped Galvanized Steel)



Description

“P” style clamp used for mounting a multitude of light duty applications including cables, pneumatic lines, and conduit.

Materials

- PVC coated
- Steel clamps are galvanized for corrosion resistance
- Color- Silver with black

Model Code

HSVW - 10

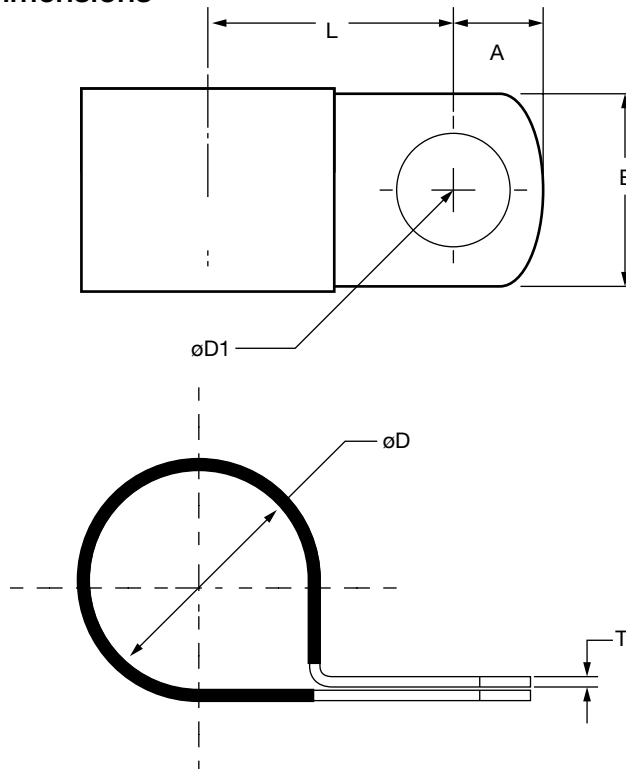
Series

HSVW = 3/4" wide
HLVZ = 1" wide

Clamp Size

(Refer to table)

Dimensions



Dimensions HSVW

Size	Holding Diameter ØD	L	øD1	A	B	T
3	3/16" (4.8)	5/8" (15.9)	0.41 (10.3)	0.31 (8)	0.75 (19.1)	0.03 (0.8)
4	1/4" (6.4)	21/32" (16.7)				
5	5/16" (7.9)	9/16" (14.3)				
6	3/8" (9.5)	23/32" (18.2)				
7	7/16" (11.1)	3/4" (19.1)				0.05 (1.3)
8	1/2" (12.7)	25/32" (19.8)				
9	9/16" (14.3)	13/16" (20.6)				
10	5/8" (15.9)	27/32" (21.4)				
11	11/16" (17.5)	7/8" (22.2)				
12	3/4" (19.1)	29/32" (23.0)				
13	13/16" (20.6)	15/16" (23.8)				
14	7/8" (22.2)	31/32" (24.6)				
15	15/16" (23.8)	1" (25.4)				
16	1" (25.4)	1-1/32" (26.2)				
17	1-1/16" (26.9)	1-1/16" (26.9)				
18	1-1/8" (28.6)	1-3/32" (27.8)				
22	1-3/8" (34.9)	1-7/32" (30.9)				

Dimensions HLVZ

Size	Holding Diameter ØD	L	øD1	A	B	T
18	1-1/8" (28.7)	1-7/32" (30.9)	0.53 (13.5)	0.56 (14.3)	1.00 (25.4)	0.05 (1.3)
19	1-3/16" (30.2)	1-1/4" (31.8)				
20	1-1/4" (31.8)	1-9/32" (32.5)				
21	1-5/16" (33.3)	1-5/16" (33.3)				
24	1-1/2" (38.1)	1-13/32" (35.7)				
25	1-9/16" (39.6)	1-7/16" (36.5)				
28	1-3/4" (44.5)	1-17/32" (38.9)				
29	1-13/16" (46.0)	1-9/16" (39.6)				
32	2" (50.8)	1-11/16" (42.8)				
33	2-1/16" (52.3)	1-23/32" (43.6)				
36	2-1/4" (57.2)	1-13/16" (46.0)				
40	2-1/2" (63.5)	1-15/16" (49.2)				
42	2-5/8" (66.8)	2" (50.8)				
44	2-3/4" (69.9)	2-1/16" (52.3)				
46	2-7/8" (73.1)	2-1/4" (57.2)				
57	3-9/16" (90.4)	2-7/16" (61.9)				

Notes:

1. Dimensions are in inches (mm).
2. Dimensions are for general information only, all critical dimensions should be verified by requesting a certified print.

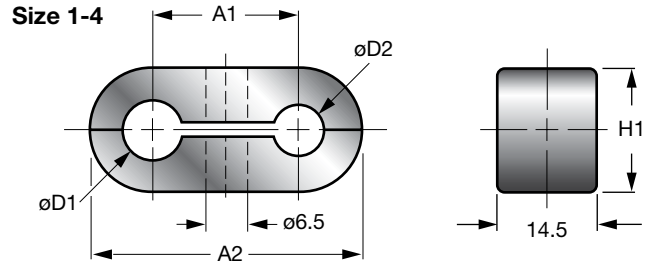
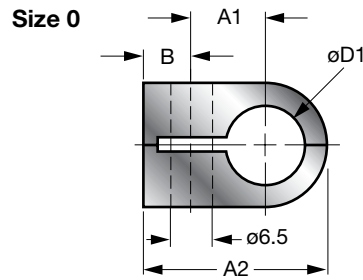
STANDARD CLAMPS

HROS Series

Oval Clamps



Dimensions



Description

Oval clamps are ideal for mobile applications where space is limited. One-piece, hinged polypropylene clamp body.

Features

- Low profile design
- Easy installation

Materials

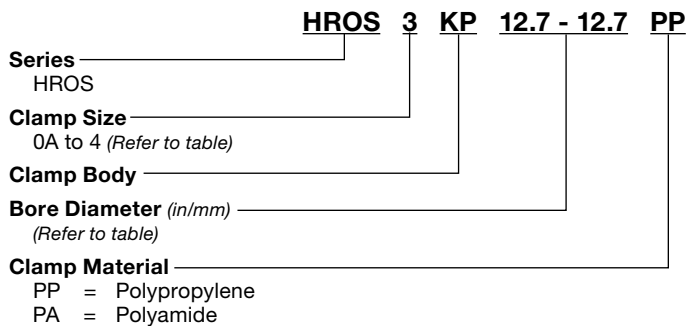
- PP - Polypropylene (standard)
- PA or others may be available

Temp Specifications

Polypropylene: -22° to 194°F (-30° to 90°C)

Polyamide: -40° to 248°F (-40° to 120°C)

Model Code



Clamp Size	$\phi D1$ & $\phi D2$ Bore Size*	Nominal Size		Dimensions			
		Tube O.D.	Pipe	A1	A2	B	H1
0A	0.24 (6.0)	-	-	0.35 (9)	0.9 (22.8)	0.28 (7)	0.53 (13.5)
	0.25 (6.4)	1/4"	-				
1	0.31 (8.0)	5/16"	-	0.7 (18)	1.26 (32)	-	
0B	0.31 (8.0)	5/16"	-	0.43 (11)	1.07 (27.2)	0.28 (7)	0.73 (18.5)
	0.37 (9.5)	3/8"	-				
	0.39 (10.0)	-	-				
2	0.40 (10.2)	-	1/8"	0.87 (22)	1.59 (40.5)	-	
	0.47 (12.0)	-	-				
	0.50 (12.7)	1/2"	-				
0C	0.39 (10.0)	-	-	0.59 (15)	1.32 (33.5)	0.28 (7)	0.93 (23.6)
	0.40 (10.2)	-	1/8"				
	0.47 (12.0)	-	-				
	0.50 (12.7)	1/2"	-				
3	0.53 (13.5)	-	1/4"	1.81 (30)	2.11 (53.6)	-	
	0.55 (14.0)	-	-				
	0.59 (15.0)	-	-				
	0.63 (16.0)	5/8"	-				
0D	0.55 (14.0)	-	-	0.75 (19)	1.57 (40)	0.24 (6)	1.2 (30.6)
	0.59 (15.0)	-	-				
	0.63 (16.0)	5/8"	-				
	0.68 (17.2)	-	3/8"				
	0.71 (18.0)	-	-				
4	0.75 (19.0)	3/4"	-	1.5 (38)	2.69 (68.3)	-	
	0.79 (20.0)	-	-				
	0.84 (21.3)	-	1/2"				
	0.87 (22.0)	7/8"	-				
	0.98 (25.0)	-	-				
	1.00 (25.4)	1"	-				

*D1 and D2 dimensions may have different bore sizes.

Dimensions listed are standard.

Notes:

1. Dimensions are in inches (mm).

2. Dimensions are for general information only, all critical dimensions should be verified by requesting a certified print.

HSPN & HSPW Series

“P” Style Clamps



Description

P style clamp used for mounting a multitude of light duty applications including cables, pneumatic lines, and conduit.

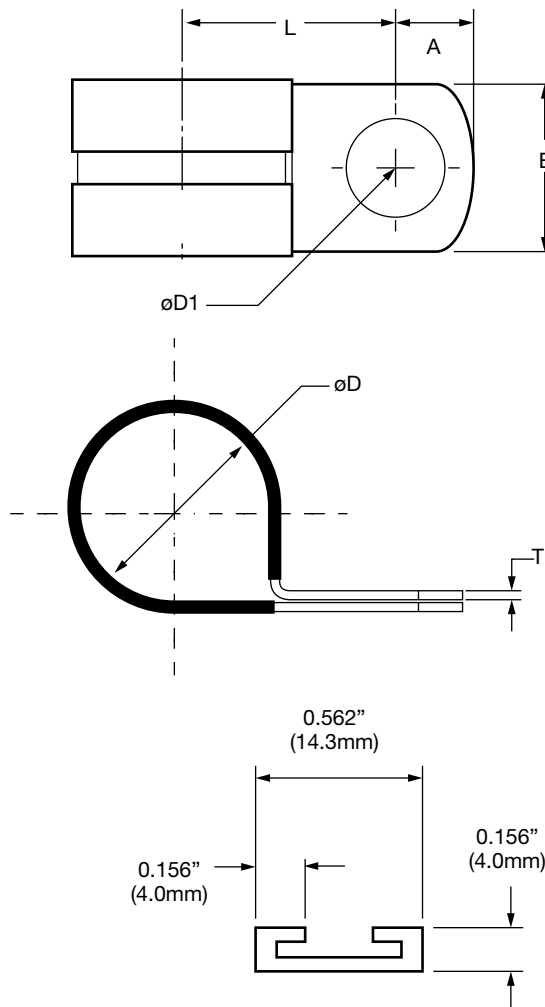
Features

HSPN clamps provide electrical insulation and vibration absorption.

Materials

- EPDM cushion
- Steel clamps are zinc electroplated for corrosion resistance
- Color- Silver with black EPDM cushion
- The A2 in the model code denotes 304 stainless steel

Dimensions



Model Code

HSPN 10

Series _____
 HSPN = 1/2" wide
 HSPW = 3/4" wide

Clamp Size _____
 (Refer to table)

Metal Components Materials _____
 (omit) = Carbon Steel
 A2 = 304 Stainless Steel (HSPN only)

Dimensions HSPN

Clamp Size	Holding Diameter ØD	L	ØD1	A	B	T
3	3/16" (4.8)	3/8" (9.5)	0.26 (6.6)	0.26 (6.6)	0.50 (12.7)	0.03 (0.8)
4	1/4" (6.4)	13/32" (10.3)				
5	5/16" (7.9)	7/16" (11.1)				
6	3/8" (9.5)	15/32" (11.9)				
7	7/16" (11.1)	1/2" (12.7)				
8	1/2" (12.7)	17/32" (13.5)				
9	9/16" (14.3)	9/16" (14.3)				
10	5/8" (15.9)	19/32" (15.1)				
11	11/16" (17.5)	5/8" (15.9)				
12	3/4" (19.1)	3/4" (19.1)				
14	7/8" (22.2)	13/16" (20.6)				
16	1" (25.4)	7/8" (22.2)				
18	1-1/8" (28.6)	15/16" (23.8)				
20	1-1/4" (31.8)	1" (25.4)				
22	1-3/8" (34.9)	1-5/32" (29.3)				
24	1-1/2" (38.1)	1-7/32" (30.9)				
26	1-5/8" (41.3)	1-9/32" (32.5)				
28	1-3/4" (44.5)	1-11/32" (34.1)				
30	1-7/8" (47.6)	1-13/32" (35.7)				
32	2" (50.8)	1-15/32" (37.2)				
34	2-1/8" (54.0)	1-17/32" (38.8)				
40	2-1/2" (63.5)	1-23/32" (43.6)				
48	3" (76.2)	1-31/32" (50.1)				

Dimensions HSPW

Clamp Size	Holding Diameter ØD	L	ØD1	A	B	T
4	1/4" (6.4)	21/32" (16.7)	0.41 (10.3)	0.31 (8)	0.75 (19.1)	0.03 (0.8)
6	3/8" (9.5)	23/32" (18.2)				
7	7/16" (11.1)	24/32" (18.5)				
8	1/2" (12.7)	25/32" (19.8)				
9	9/16" (14.3)	13/16" (20.6)				
10	5/8" (15.9)	27/32" (21.4)				
12	3/4" (19.1)	29/32" (23.0)				
14	7/8" (22.2)	31/32" (24.6)				
16	1" (25.4)	1-1/32" (26.2)				
18	1-1/8" (28.6)	1-3/32" (27.8)				0.05 (1.3)

Notes:

1. Dimensions are in inches (mm).
2. Dimensions are for general information only, all critical dimensions should be verified by requesting a certified print.

STANDARD CLAMPS

HY-LOOP Series

Direct Mount or C-Rail Mount Clamps



Description

The HY-LOOP product family is designed to offer a tool free and easy to use solution to your cable management needs. The HY-LOOP comes in a direct mount and C-rail mount in addition to mount free option.

Features and Benefits

- Hook-and-loop tape in fixed lengths or adjustable lengths
- Damage-free installation of sensitive cables
- Tool-free cable assembly
- Extremely easy to use
- Expandable cable bundling

Technical Specifications

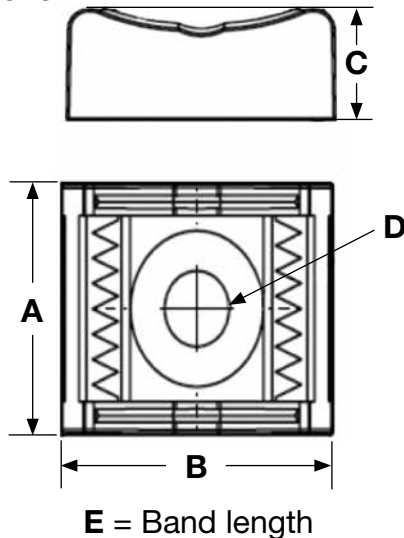
Plastic parts:

- Polyamid glasfaserverstärkt (PA GF)
- Self-extinguishing acc. to UL94-VO
- Temp. range: -40 to +80 C (normal load)
- Free of halogens

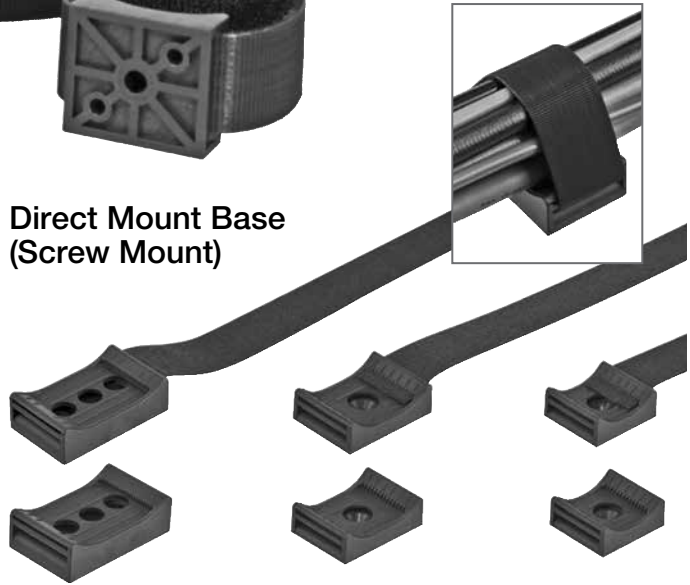
Hook and Loop:

- Polypropylen & Velours PA (extruded and laminated)
- Hooks/cm²: average 272
- Flammability test UL94-V2
- Lifetime: 50% failure at 100 cycles
- Melting point: 150°C
- Free from halogens and silicone
- Shear Strength: min. 7,0 N/cm²
- Peel strength: min. 0,4 N/cm
- Tear resistance: min. 120 N/cm²

Dimensions



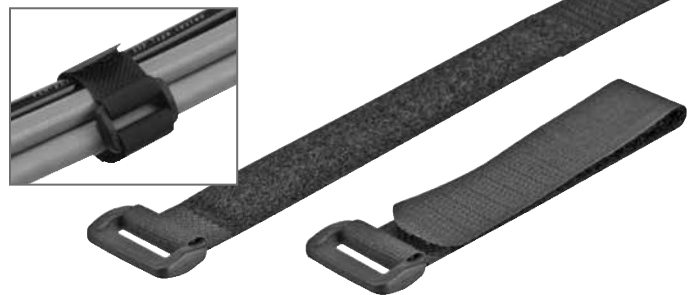
Direct Mount Base (Screw Mount)



C-Rail Mounting Base



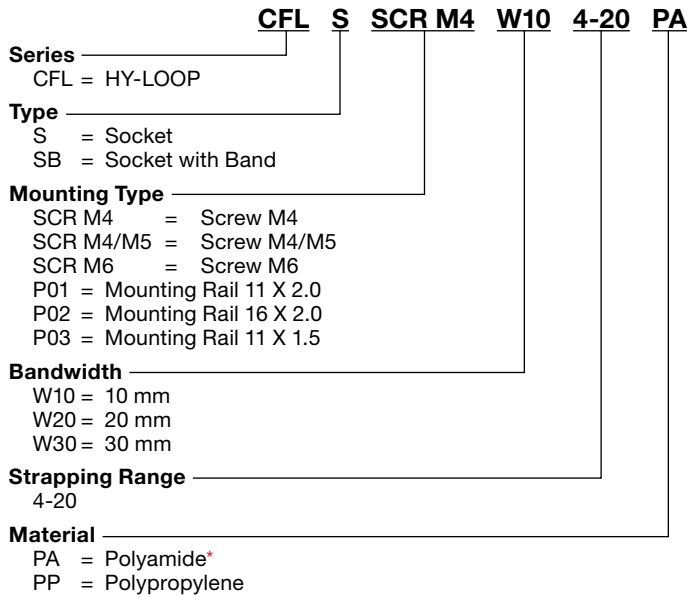
Hook & Loop Tape Straps



HY-LOOP Dimensions (mm)

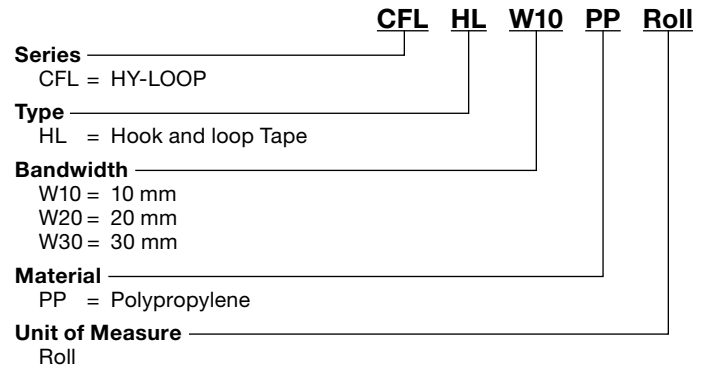
Size	4512954	4512992	4512988	4512994
A	15	26	26	38
B	18.6	29	36	62
C	8.6	11.3	11.3	18.5
D	DIN ISO sunk screw M4	DIN ISO sunk screw M4 o. M5	DIN ISO sunk screw M4 o. M5	3 holes DIN ISO for cap screw M6 Distance Lt. & Rt. hole 30
E	150	180	200	300

Model Code - Direct Mount



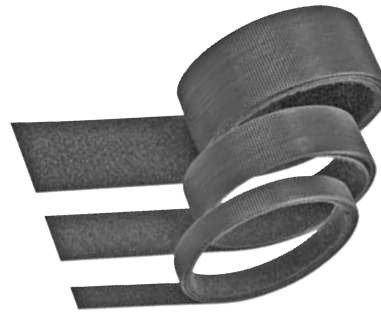
*Note: All hook and loop tape is polypropylene.

Model Code - C-Rail Mount



Hook and Loop Tape Rolls

Part No.	Description	Tape Width (mm)
4512771	CFL HL W10 PP Roll	10
4512825	CFL HL W20 PP Roll	20
4512827	CFL HL W30 PP Roll	30



Mounting Sockets (for Hook and Loop tape)

Part No.	Description	Clamp Range (mm)	Tape Width (mm)	Bolt Size
4512953	CFL SSCR M4 W10 4-20 PA	4-20	10	M4
4512990	CFL SSCR M4/M5 W20 8-35 PA	8-35	20	M4/M5
4512987	CFL SSCR M4/M5 W20 10-60 PA	10-60	20	M4/M5
4512993	CFL SSCR M6 W30 20-100 PA	20-100	30	M6



Mounting Sockets with Hook and Tape

Part No.	Description	Clamp Range (mm)	Tape Width (mm)	Bolt Size
4512954	CFL SBSCR M4 W10 4-20 PA/PP	4-20	10	M4
4512992	CFL SBSCR M4/M5 W20 8-35 PA/PP	8-35	20	M4/M5
4512988	CFL SBSCR M4/M5 W20 10-60 PA/PP	10-60	20	M4/M5
4512994	CFL SBSCR M6 W30 20-100 PA/PP	20-100	30	M6



C-Rail Sockets (for Hook and Loop tape)

Part No.	Description	Clamp Range (mm)	Tape Width (mm)	C-Rail Size
4512947	CFL SP01 W20 8-35 PA	8-35	20	C11 x 2.0

