

HYDAC Micro Power Pack DC0

General Description

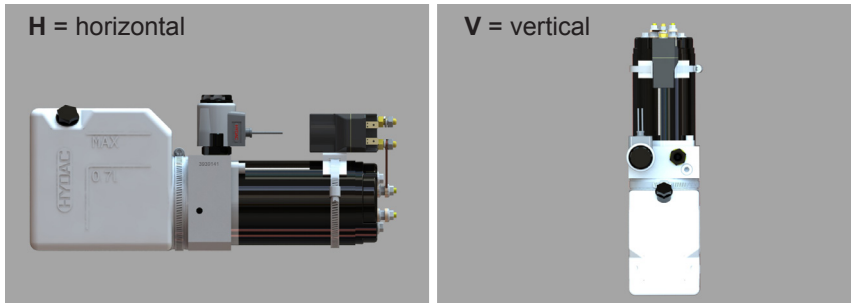
- Versatile range of 12 and 24 Volt Micro Power Units for a variety of applications
- Flows up to 3 l/min, pressures up to 180 bar
- Motors:
150 W, 500 W, 800 W DC
- Pump sizes:
0.25, 0.50, 0.75 and 1.00 cc/rev
- Tank sizes:
0.5 l

Technical data

- Flow rate: up to 3 l/min
- Continuous pressure:
up to 180 bar
- Short time duty: S2 = 5 min
- Intermittent duty: S3 = 20 %
- According to DIN EN60034-5
- Fluid: Hydraulic oil
to DIN 51524 Part 1 and 2
- Oil temperature:
-20 °C to max. +80 °C
- Ambient temperature:
-20 °C to +40 °C
- Filtration:
Operating fluid to ISO 4406
Class 21/19/16 or cleaner



1. Mounting position of power unit



2. Filler orientation



Model code

Example **DC0 H M04 R - 0.5 - 200 - 0.5 - 24A - M23 - 250V210**

Power unit: DC0 H M04 R - 0.5 - 200 - 0.5 - 24A - M23 - 250V210
 Flange controls: M23 - 250V210

Type of power unit —————

Mounting position, see point 1 —————
H = horizontal
V = vertical

Oil tank see point 3 —————
M04 = length 150 mm

Filler orientation —————
 see point 2
L = left
T = top
R = right

Displacement volume of pump and maximum pressure, see point 4. —————

Motor: output and voltage, see point 4 —————
 0,15 kW 12 V DC
 0,5 kW 12 V DC
 0,8 kW 12 V DC

Flange controls —————
M23 = see overview of lift-lower flange controls point 5
250V = pressure relief valve DB, pressure range and type of adjustment
210 = DB pre-set to 210 bar, no details: no pre-set

3. Oil tank

Tank code	Filling volume/ draw-off volume (l)			Tank length [mm]
	Horizontal tank position R and L	Horizontal tank position T	Vertical	
M04	0.9 / 0.8	0.9 / 0.8	0.95 / 0.85	130*

* where mounted horizontally, support for oil tank must be provided by the customer - see dimensions

4. Motor-pump characteristics

0.15 kW – 12 V

Pump displacement [ccm]	Pressure [bar]			
	50	100	150	200
0.25	0.48 l/min 9 A	0.43 l/min 14 A	0.39 l/min 20 A	0.36 l/min 28 A
0.5	0.86 l/min 14 A	0.75 l/min 28 A	0.60 l/min 39 A	
0.75	1.18 l/min 20 A	0.90 l/min 39 A	S2 = 2,5 min S3 = 10% (at nominal power)	

0.50 kW – 12 V

Pump displacement [ccm]	Pressure [bar]			
	50	100	150	200
0.25	0.73 l/min 15 A	0.71 l/min 23 A	0.68 l/min 30 A	0.65 l/min 40 A
0.5	1.41 l/min 23 A	1.31 l/min 40 A	1.19 l/min 54 A	1.09 l/min 70 A
0.75	2.04 l/min 30 A	1.78 l/min 54 A	S2 = 2,5 min S3 = 10% (at nominal power)	

0.80 kW – 12 V

Pump displacement [ccm]	Pressure [bar]			
	50	100	150	200
0.25	1.19 l/min 35 A	1.13 l/min 45 A	1.09 l/min 57 A	1.05 l/min 70 A
0.5	2.27 l/min 45 A	2.09 l/min 70 A	1.90 l/min 95 A	1.70 l/min 125 A
0.75	3.27 l/min 57 A	2.86 l/min 95 A	2.41 l/min 135 A	S2 = 2,5 min S3 = 8% (at nominal power)

Q: [l/min]
I: [A]
S2: [min]
S3: [%]

5. Lift-lower control

Example **M 2 3 ZN - 200V + 24DC**

Flange version _____

Item 2 Pressure relief valve _____

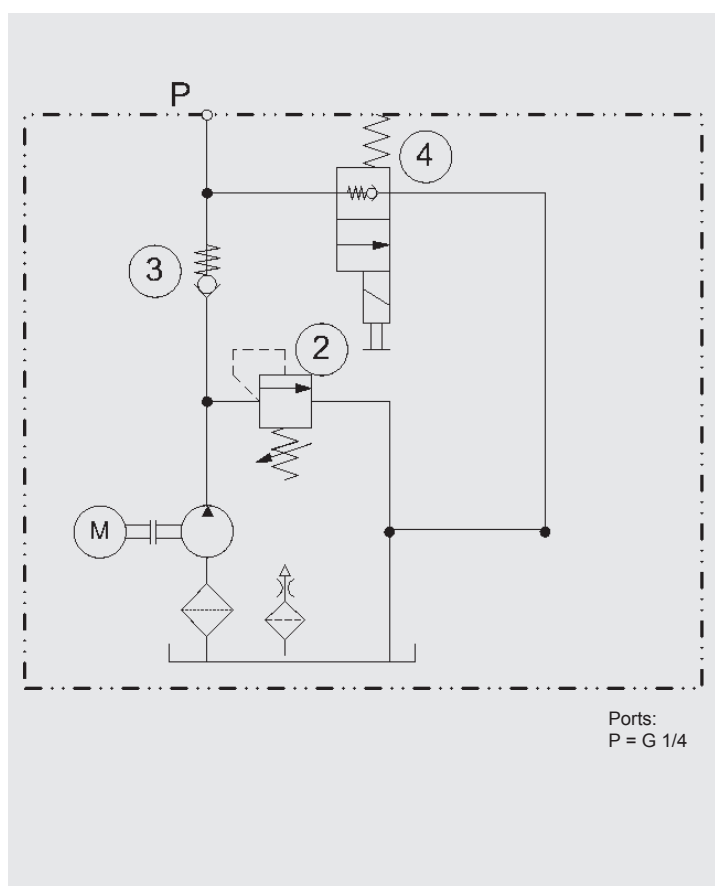
Item 3 Check valve _____

Item 4 Blanking Plug 0 _____
 WS06Z-01 Z
 WS06Z-01M ZN
 WS06Y-01 Y
 WS06Y-01M YN

Pressure relief valve not pre-set (p_{max} 200 bar).

Coil voltage _____
 12 V DC
 24 V DC

For further technical information on valves see:
 WS06Z-01 Brochure no. 5.146.0
 WS06Z-01M Brochure no. 5.146.0
 WS06Y-01 Brochure no. 5.147.0
 WS06Y-01M Brochure no. 5.147.0
 coil Brochure no. 5.155.0



Ports:
P = G 1/4

The information in this brochure relates to the operating conditions and applications described.

For applications or operating conditions not described, please contact the relevant technical department.

Subject to technical modifications.

HYDAC TECHNOLOGY Limited

De Havilland Way, Windrush Park

Witney, Oxfordshire

OX29 OYG

Tel: +44 - 1993 - 86 63 66

Fax: +44 - 1993 - 86 63 65

Email: info@hydac.co.uk

www.hydac.co.uk